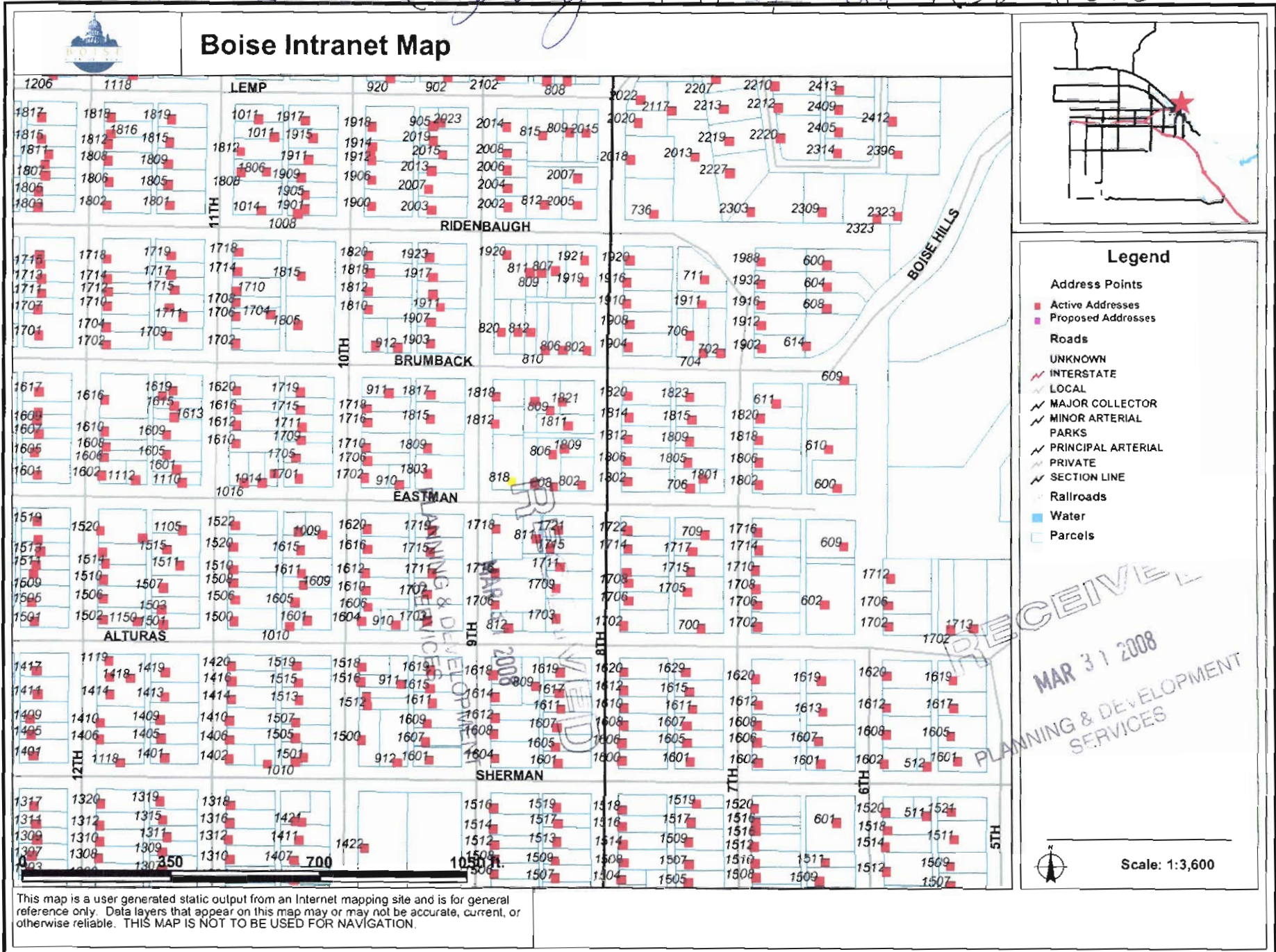


818N Eastman zoning R-1CH parcel # R3856000270





Front Elevation (south)



Side Elevation (west)



Side Elevation (east)



House next door (east)



House next door (west)



House across street (south)



Block face



Opposite block face



BOISE CITY, IDAHO
CITY OF TREES

LEGAL NOTICE OF PUBLIC HEARING

THE CITY OF BOISE HISTORIC
PRESERVATION COMMISSION WILL HEAR
A REQUEST FOR A CERTIFICATE OF
APPROPRIATENESS (DRH08-00099)

RYAN DOYLE requests Historic Preservation approval to
construct a front porch and replace the windows and the
doors on property located at 818 Eastman Street in an
R-1CH (Single Family Residential with Historic Overlay)
zone.

ON April 28, 2008 AT 6:00 P.M.

IN THE BOISE CITY HALL
COUNCIL CHAMBERS

For more information, contact the
Planning & Development Services Dept.
150 North Capitol Blvd.
2nd Floor
(208) 384-3830
TDD/TTY 800/377-3529

04/15/2008

Posting

ADJACENT PROPERTIES

RECEIVED
MAR 31 2008
PLANNING & DEVELOPMENT
SERVICES



PROPERTY ACROSS EASTMEN ST.



PROPERTY ADJACENT TO ALLEY



PROPERTY ACROSS 9TH ST.



PROPERTY ADJACENT TO THE EAST

DRH 08 00099



WEST ELEVATION FACING 9TH ST.



BACK ELEVATION FACING ALLEYWAY

DRH 08 00099

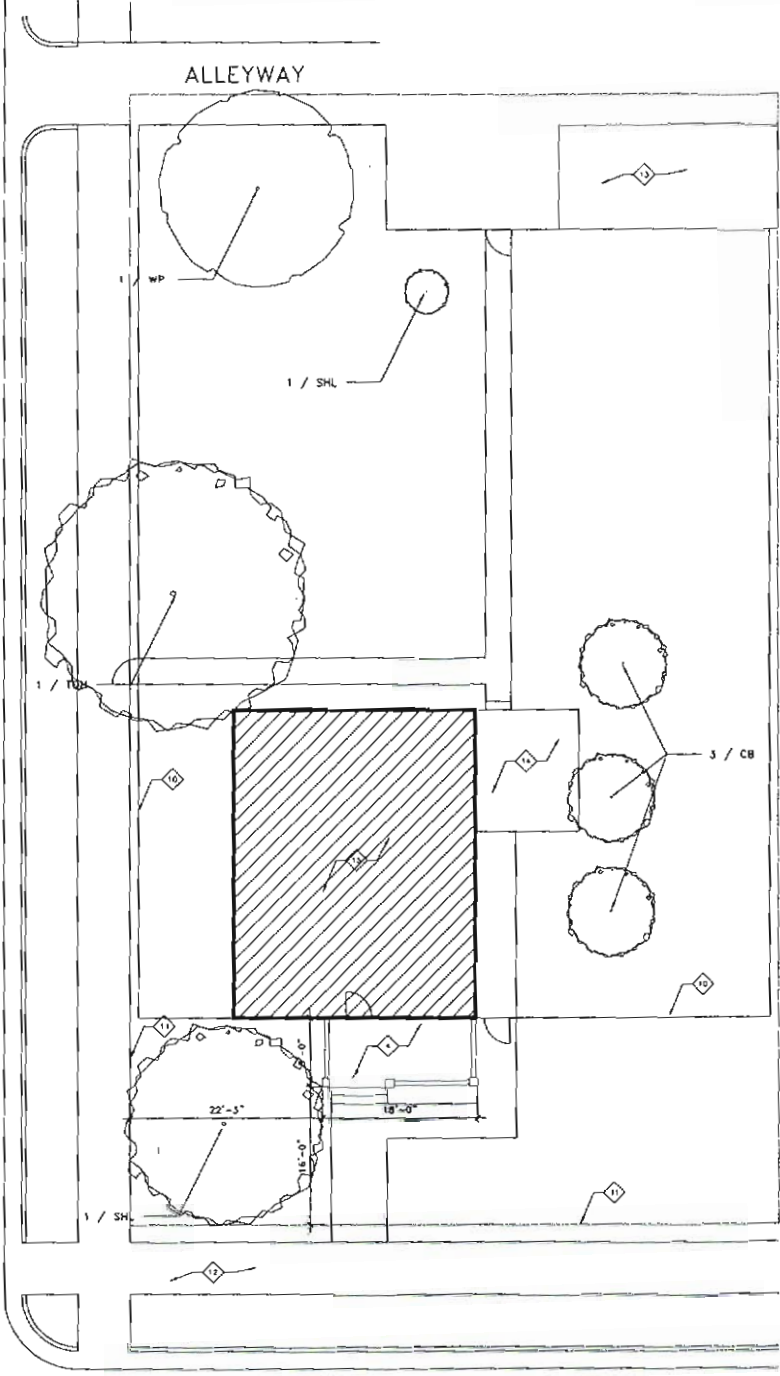


FRONT ELEVATION FACING EASTMEN ST



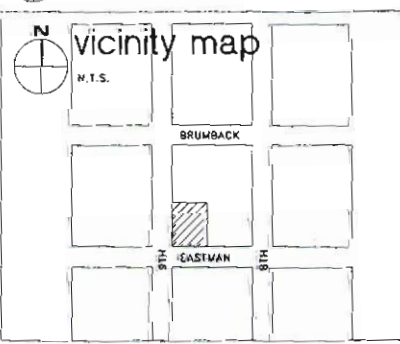
EAST ELEVATION FACING SIDE YARD

9TH ST.



EASTMEN ST.

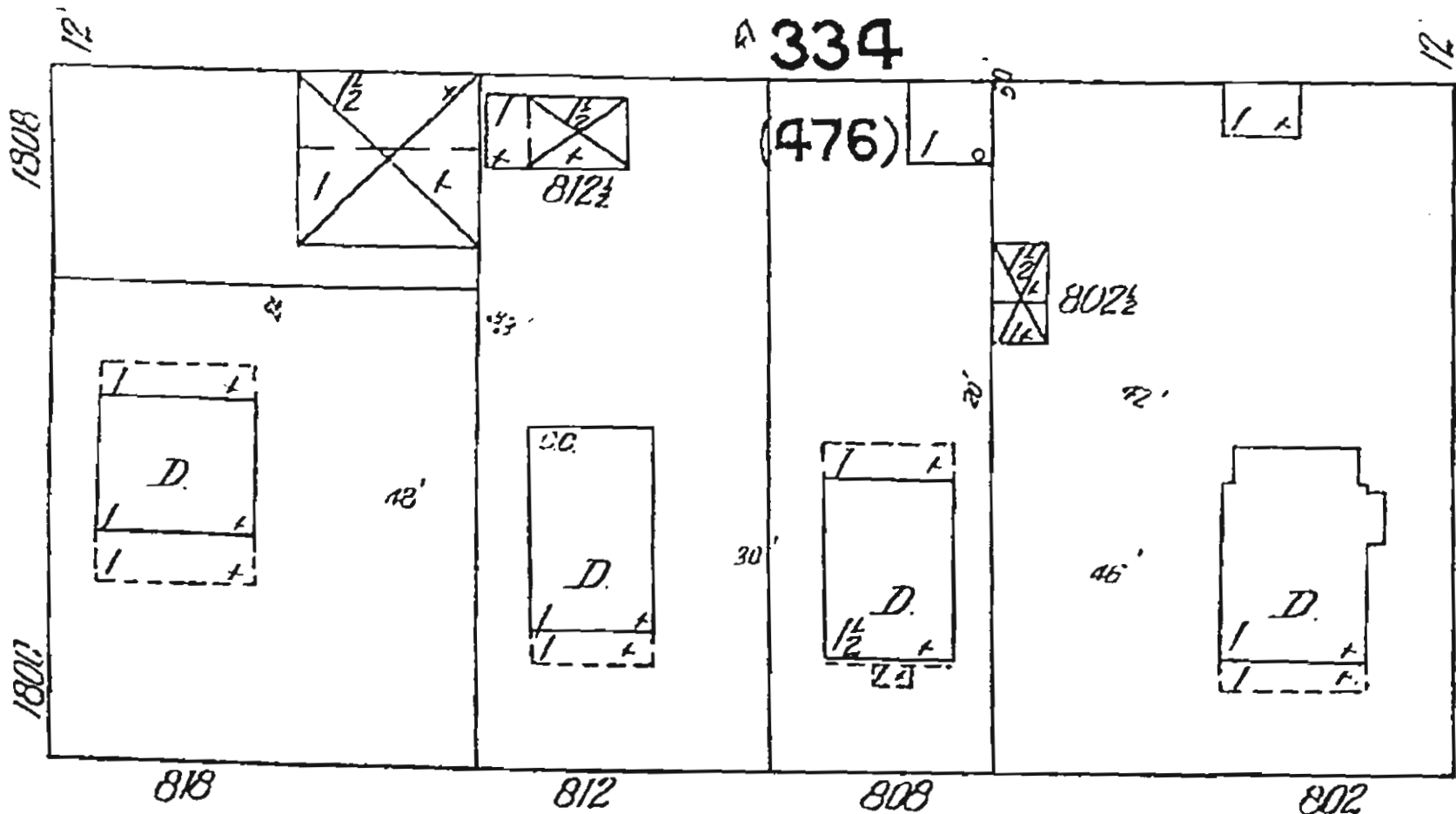
site and landscape plan
SCALE: 1/8" = 1'-0"



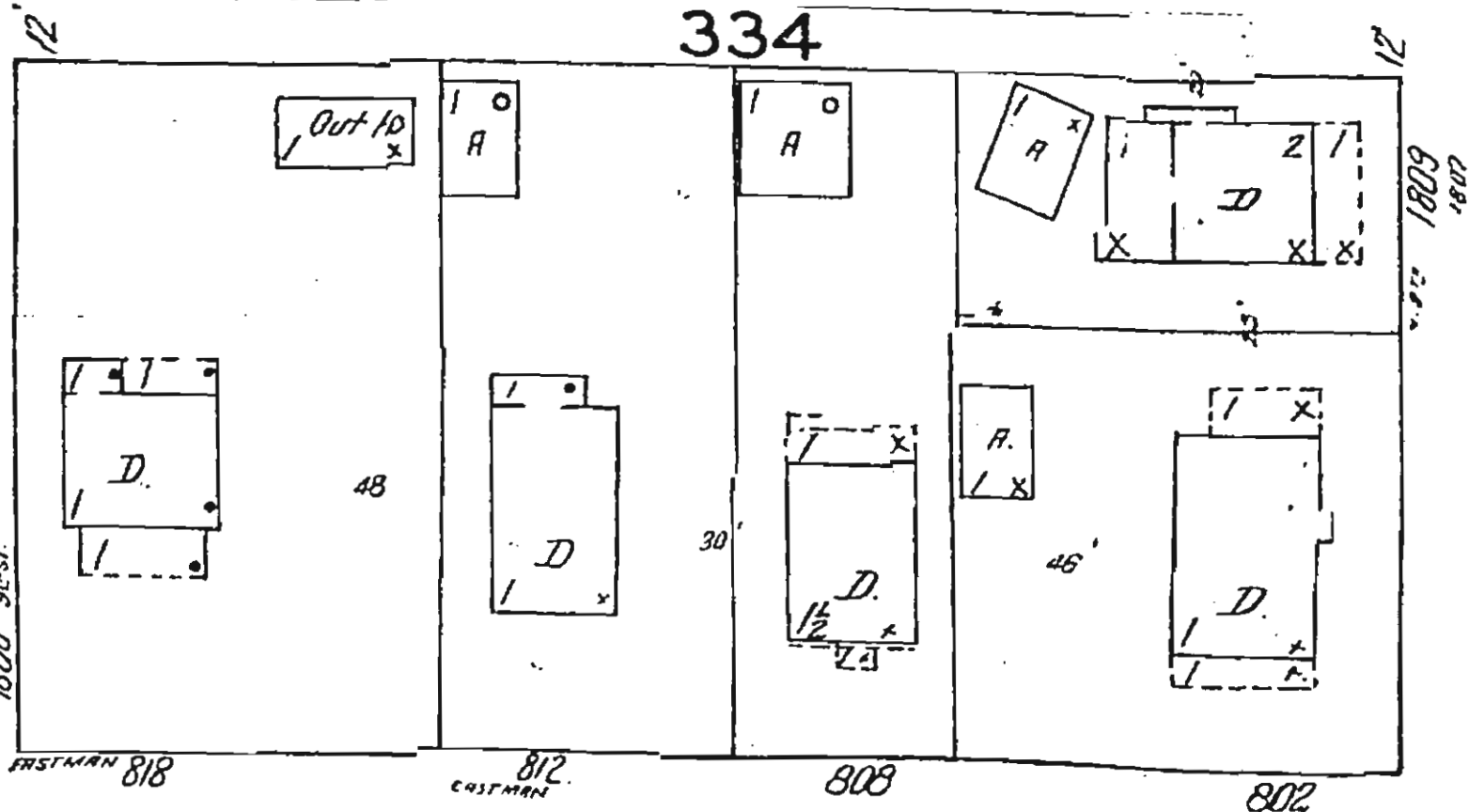
plant schedule: QUANTITY/ TYPE

	SYMBOL	COMMON NAME	BOTANICAL NAME	PLANTING SIZE	QUANTITY
EXISTING TREES AND SHRUBS	WP	WHITE PINE			1
	CB	CEBAPPLE TREE			1
	SHL	SKYLARK HONEY LOCUST	GLYCYMIA TRICANTAGOS SKYLARK		1
	TOH	TREE OF HEAVEN	AILOANTHUS AL. MISSIVA SHINGLE		2
E = EXISTING					
NEW SHRUBS					
NEW TREES					

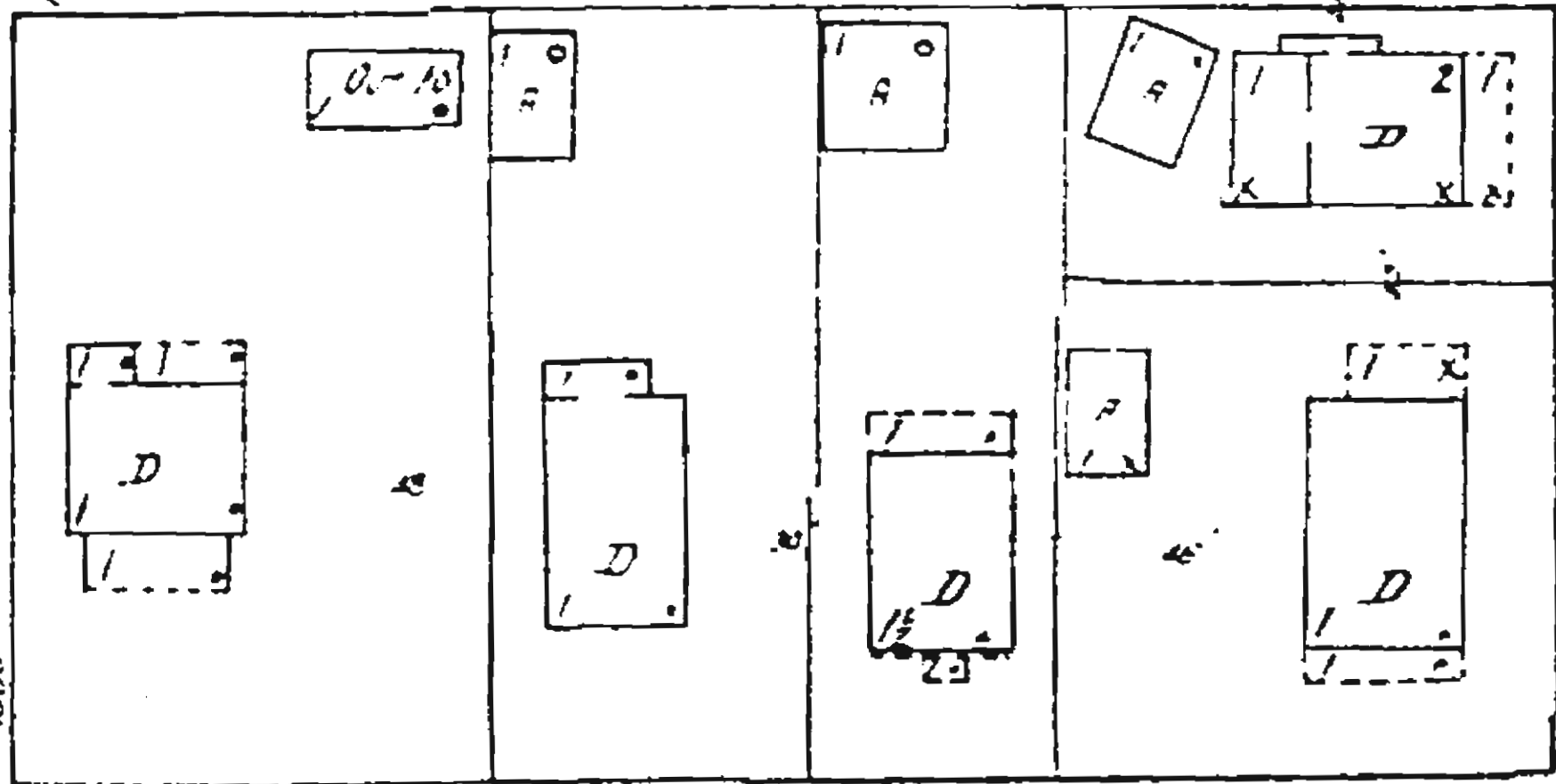
A 334



334



1620



33

32

31

30

1956

1821