

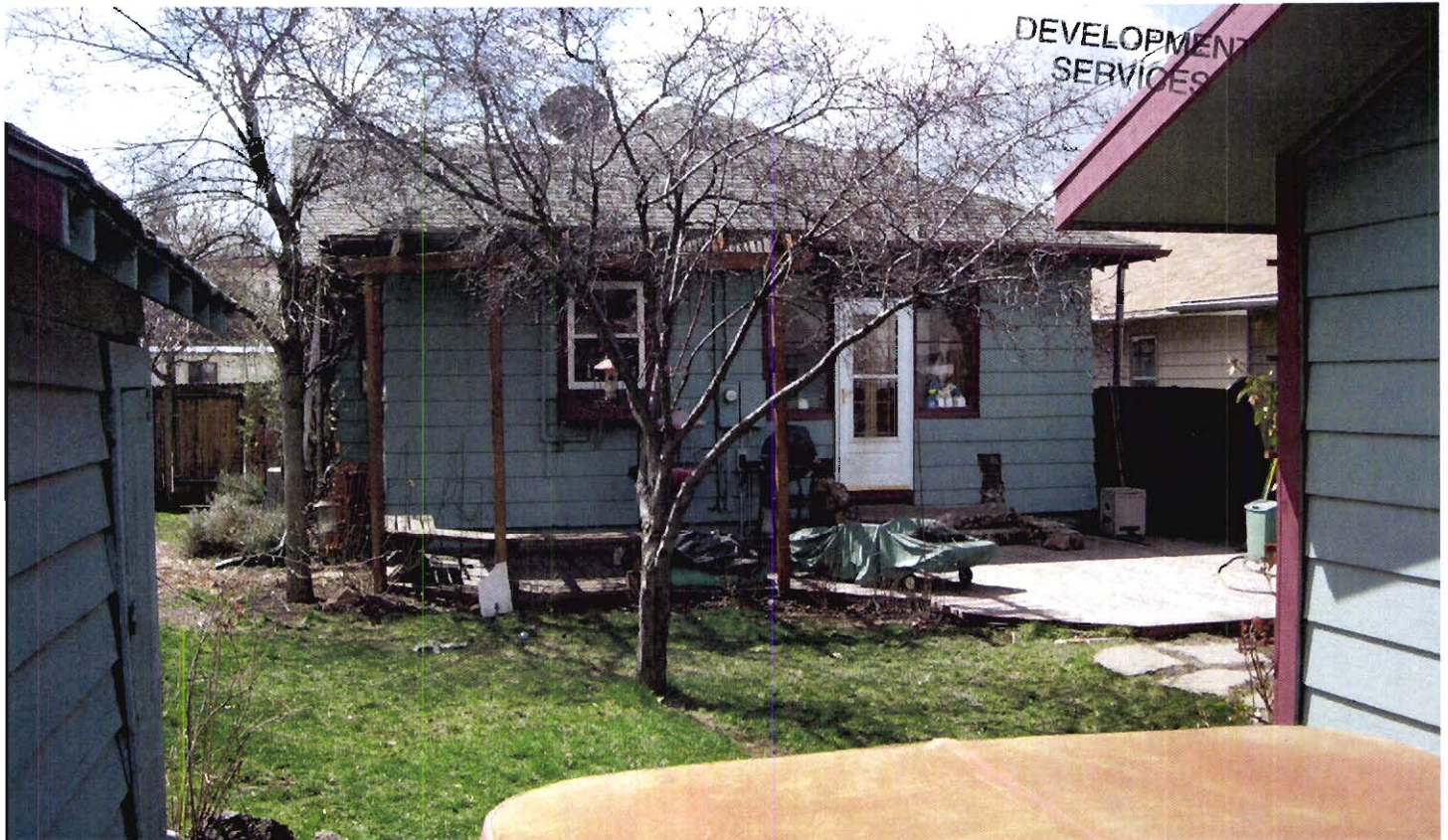


Front left side of existing home.

RECEIVED

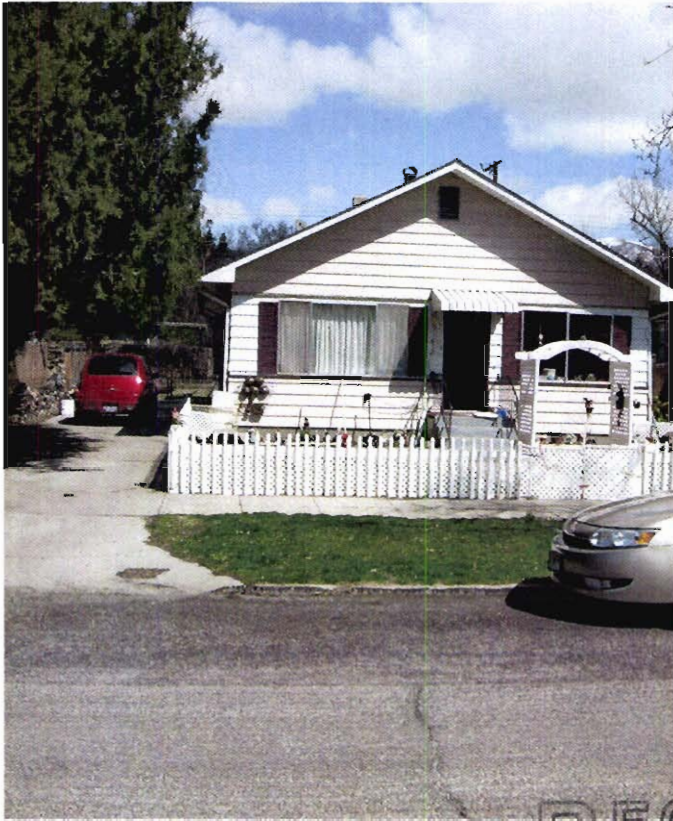
APR 03 2008

DEVELOPMENT
SERVICES



Back of existing home. Taken from alley.

DRH 08 00107



Front of house directly West of home

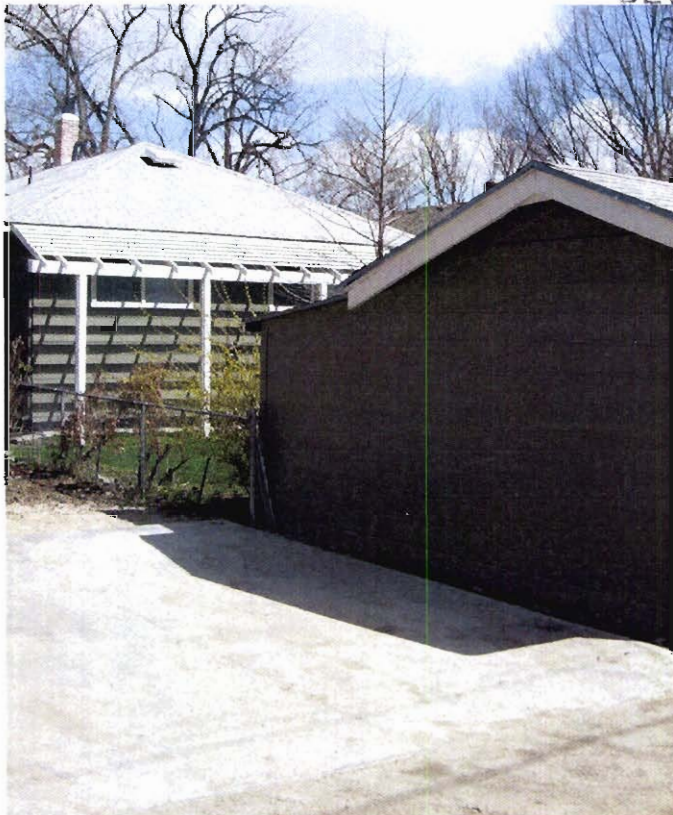


Back of house directly West of home

RECEIVED

APR 03 2008

DEVELOPMENT
SERVICES



Across alley (North East) of home



Back of house directly East of home

DRH 08 00107



Front of existing home



Front right side of existing home.

RECEIVED

APR 03 2008

DRH 08 00107

DEVELOPMENT
SERVICES

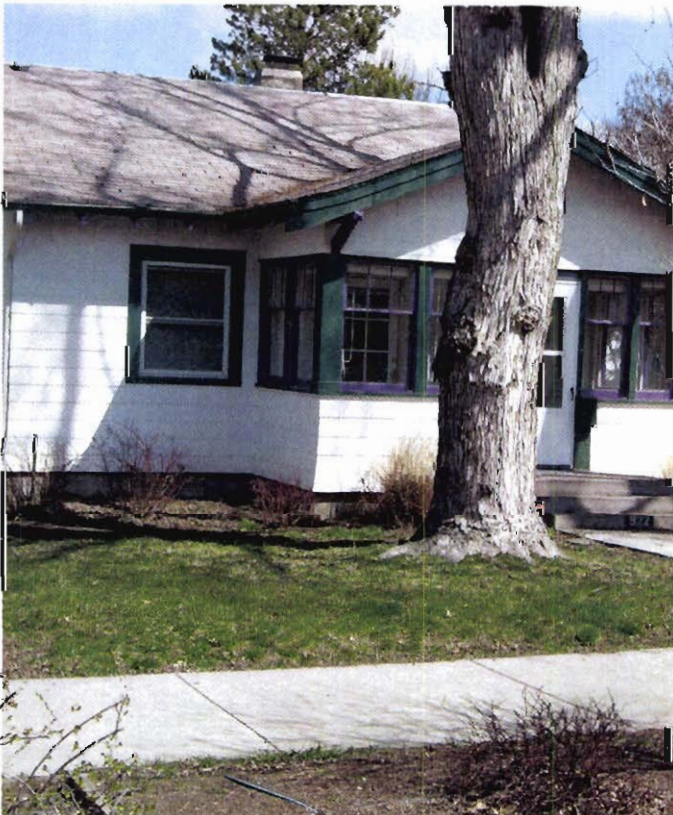
RECEIVED

APR 03 2008

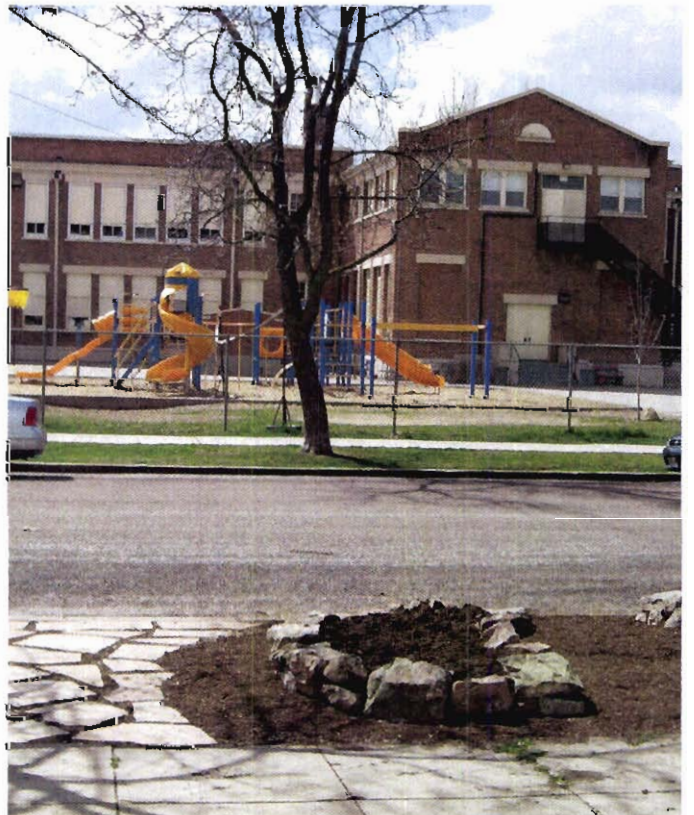
DEVELOPMENT
SERVICES



Front of house directly East of home



Same block. East of home



Across State street. Back playground of elementary school. Taken from steps of our home.

DRH 08 00107



Across alley in back of home.



Across alley in back of home.

RECEIVED

APR 03 2008

DEVELOPMENT
SERVICES



Directly behind existing home. Across alley.

DRH 08 00107