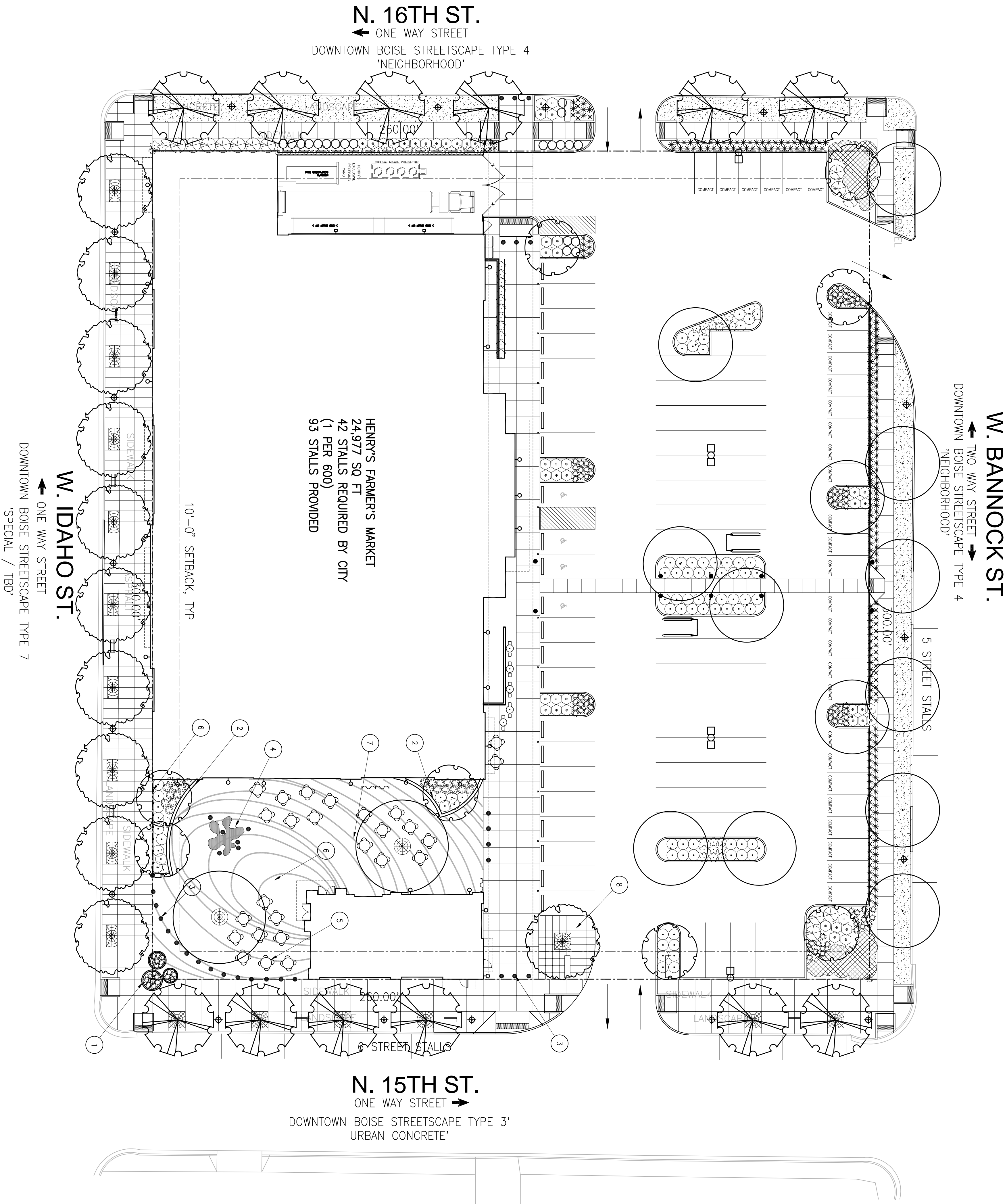


LANDSCAPE PLAN
SCALE 1" = 20'-0"



SHEET NOTES:

1. CONCRETE PLANTERS (MOVABLE, BOISE CITY STANDARD)
2. 18" CONCRETE SEAWALL
3. DECORATIVE BOLLARDS W/ INTERNAL LIGHTING
4. PUBLIC ART SCULPTURE/WATER FEATURE (TBD)
5. MOVABLE TABLE/CHAIRS/UMBRELLAS
6. TREES IN 6" DIA. TREE GRATE PLANTERS
7. COLORED/STAINED/SCORED CONCRETE PLAZA SURFACE
8. UNIT PAVES ON SAND/PEA GRAVEL BEDDING (QUIRKLE, PERMEABLE SURFACE)

LANDSCAPE GENERAL NOTES:

ALL PLANTING BEDS SHALL RECEIVE A 3" DEPTH OF ORGANIC MULCH.

THE SITE WILL BE MAINTAINED THROUGHOUT THE YEAR BY PROFESSIONAL LANDSCAPE MAINTENANCE. MAINTENANCE SHALL INCLUDE: WEEKLY MOWING AND TRIMMING OF THE TURF, REGULAR FERTILIZATION, ANNUAL TREE AND SHRUB PRUNING, WEEDING AND TRASH OR DEBRIS REMOVAL.

FINISH GRADES FOR LANDSCAPE AREAS TO BE SMOOTH AND EVEN GRADIENTS WITH POSITIVE DRAINAGE IN ACCORDANCE WITH SITE GRADING PLAN. SLOPES FOR TURF AREAS SHALL NOT EXCEED 4:1.

ALL PLANT MATERIAL SHALL CONFORM TO THE AMERICAN NURSERYMAN STANDARDS FOR CULTIVARS.

PROTECT LANDSCAPE WORK AND MATERIALS FROM DAMAGE DUE TO LANDSCAPE MAINTENANCE. MAINTENANCE SHALL BE CONTROLLED WITH AN APPROPRIATE IRRIGATION SYSTEM. MAINTAIN PROTECTION DURING INSTALLATION AND MAINTENANCE PERIODS. REPAIR, OR REPLACE DAMAGED LANDSCAPE WORK AS DIRECTED.

IRRIGATION STATEMENT:

THIS SYSTEM AS SHOWN IS INTENDED TO BE PERMANENTLY IRRIGATED BY MEANS OF AN AUTOMATIC IRRIGATION SYSTEM COMPOSED OF OVERHEAD SPRAY & LOW-VOLUME DRIP IRRIGATION. THE SYSTEM SHALL BE CONTROLLED WITH AN APPROPRIATE IRRIGATION CONTROLLER. SCHEDULE OF ADJUSTING FOR CLIMATIC VARIANCES, ONE POINT OF CORRECTION SHALL BE MADE AND FITTED WITH AN IRRIGATION MODEL. SOIL COVER CHECK BACKFLOW PREVENTER.

| SYM | COMMON NAME | BOTANICAL NAME | PLANTING SIZE |
|-------|--------------------|----------------------------------|-------------------------|
| TREES | | | |
| | Morone Sweetgum | Liquidambar styraciflua 'Morone' | 2" caliper 40' x 30' |
| | Ulmus alba | Ulmus alba | 2" caliper 50' x 35' |
| | Quercus alba | Quercus alba | 2" caliper 50' x 35' |
| | Prunella americana | Prunella americana | 2" caliper 50' x 35' |
| | Ulmus alba | Ulmus alba | 2" caliper 50' x 35' |
| | Ulmus alba | Ulmus alba | 2" caliper 50' x 35' |
| | Ulmus alba | Ulmus alba | 2" caliper 50' x 35' |
| | Ulmus alba | Ulmus alba | 2" caliper 50' x 35' |
| | Ulmus alba | Ulmus alba | 2" caliper 50' x 35' |
| | Ulmus alba | Ulmus alba | 2" caliper 50' x 35' |
| | Ulmus alba | Ulmus alba | 2" caliper 50' x 35' |
| | Ulmus alba | Ulmus alba | 2" caliper 50' x 35' |
| | Ulmus alba | Ulmus alba | 2" caliper 50' x 35' |
| | Ulmus alba | Ulmus alba | 2" caliper 50' x 35' |
| | Ulmus alba | Ulmus alba | 2" caliper 50' x 35' |
| | Ulmus alba | Ulmus alba | 2" caliper 50' x 35' |
| | Ulmus alba | Ulmus alba | 2" caliper 50' x 35' |
| | Ulmus alba | Ulmus alba | 2" caliper 50' x 35' |
| | Ulmus alba | Ulmus alba | 2" caliper 50' x 35' |
| | Ulmus alba | Ulmus alba | 2" caliper 50' x 35' |
| | Ulmus alba | Ulmus alba | 2" caliper 50' x 35' |
| | Ulmus alba | Ulmus alba | 2" caliper 50' x 35' |
| | Ulmus alba | Ulmus alba | 2" caliper 50' x 35' |
| | Ulmus alba | Ulmus alba | 2" caliper 50' x 35' |
| | Ulmus alba | Ulmus alba | 2" caliper 50' x 35' |
| | Ulmus alba | Ulmus alba | 2" caliper 50' x 35' |
| | Ulmus alba | Ulmus alba | 2" caliper 50' x 35' |
| | Ulmus alba | Ulmus alba | 2" caliper 50' x 35' |
| | Ulmus alba | Ulmus alba | 2" caliper 50' x 35' |
| | Ulmus alba | Ulmus alba | 2" caliper 50' x 35' |
| | Ulmus alba | Ulmus alba | 2" caliper 50' x 35' |
| | Ulmus alba | Ulmus alba | 2" caliper 50' x 35' |
| | Ulmus alba | Ulmus alba | 2" caliper 50' x 35' |
| | Ulmus alba | Ulmus alba | 2" caliper 50' x 35' |
| | Ulmus alba | Ulmus alba | 2" caliper 50' x 35' |
| | Ulmus alba | Ulmus alba | 2" caliper 50' x 35' |
| | Ulmus alba | Ulmus alba | 2" caliper 50' x 35' |
| | Ulmus alba | Ulmus alba | 2" caliper 50' x 35' |
| | Ulmus alba | Ulmus alba | 2" caliper 50' x 35' |
| | Ulmus alba | Ulmus alba | 2" caliper 50' x 35' |
| | Ulmus alba | Ulmus alba | 2" caliper 50' x 35' |
| | Ulmus alba | Ulmus alba | 2" caliper 50' x 35' |
| | Ulmus alba | Ulmus alba | 2" caliper 50' x 35' |
| | Ulmus alba | Ulmus alba | 2" caliper 50' x 35' |
| | Ulmus alba | Ulmus alba | 2" caliper 50' x 35' |
| | Ulmus alba | Ulmus alba | 2" caliper 50' x 35' |
| | Ulmus alba | Ulmus alba | 2" caliper 50' x 35' |
| | Ulmus alba | Ulmus alba | 2" caliper 50' x 35' |
| | Ulmus alba | Ulmus alba | 2" caliper 50' x 35' |
| | Ulmus alba | Ulmus alba | 2" caliper 50' x 35' |
| | Ulmus alba | Ulmus alba | 2" caliper 50' x 35' |
| | Ulmus alba | Ulmus alba | 2" caliper 50' x 35' |
| | Ulmus alba | Ulmus alba | 2" caliper 50' x 35' |
| | Ulmus alba | Ulmus alba | 2" caliper 50' x 35' |
| | Ulmus alba | Ulmus alba | 2" caliper 50' x 35' |
| | Ulmus alba | Ulmus alba | 2" caliper 50' x 35' |
| | Ulmus alba | Ulmus alba | 2" caliper 50' x 35' |
| | Ulmus alba | Ulmus alba | 2" caliper 50' x 35' |
| | Ulmus alba | Ulmus alba | 2" caliper 50' x 35' |
| | Ulmus alba | Ulmus alba | 2" caliper 50' x 35' |
| | Ulmus alba | Ulmus alba | 2" caliper 50' x 35' |
| | Ulmus alba | Ulmus alba | 2" caliper 50' x 35' |
| | Ulmus alba | Ulmus alba | 2" caliper 50' x 35' |
| | Ulmus alba | Ulmus alba | 2" caliper 50' x 35' |
| | Ulmus alba | Ulmus alba | 2" caliper 50' x 35' |
| | Ulmus alba | Ulmus alba | 2" caliper 50' x 35' |
| | Ulmus alba | Ulmus alba | 2" caliper 50' x 35' |
| | Ulmus alba | Ulmus alba | 2" caliper 50' x 35' |
| | Ulmus alba | Ulmus alba | 2" caliper 50' x 35' |
| | Ulmus alba | Ulmus alba | 2" caliper 50' x 35' |
| | Ulmus alba | Ulmus alba | 2" caliper 50' x 35' |
| | Ulmus alba | Ulmus alba | 2" caliper 50' x 35' |
| | Ulmus alba | Ulmus alba | 2" caliper 50' x 35' |
| | Ulmus alba | Ulmus alba | 2" caliper 50' x 35' |
| | Ulmus alba | Ulmus alba | 2" caliper 50' x 35' |
| | Ulmus alba | Ulmus alba | 2" caliper 50' x 35' |
| | Ulmus alba | Ulmus alba | 2" caliper 50' x 35' |
| | Ulmus alba | Ulmus alba | 2" caliper 50' x 35' |
| | Ulmus alba | Ulmus alba | 2" caliper 50' x 35' |
| | Ulmus alba | Ulmus alba | 2" caliper 50' x 35' |
| | Ulmus alba | Ulmus alba | 2" caliper 50' x 35' |
| | Ulmus alba | Ulmus alba | 2" caliper 50' x 35' |
| | Ulmus alba | Ulmus alba | 2" caliper 50' x 35' |
| | Ulmus alba | Ulmus alba | 2" caliper 50' x 35' |
| | Ulmus alba | Ulmus alba | 2" caliper 50' x 35' |
| | Ulmus alba | Ulmus alba | 2" caliper 50' x 35' |
| | Ulmus alba | Ulmus alba | 2" caliper 50' x 35' |
| | Ulmus alba | Ulmus alba | 2" caliper 50' x 35' |
| | Ulmus alba | Ulmus alba | 2" caliper 50' x 35' |
| | Ulmus alba | Ulmus alba | 2" caliper 50' x 35' |
| | Ulmus alba | Ulmus alba | 2" caliper 50' x 35' |
| | Ulmus alba | Ulmus alba | 2" caliper 50' x 35' |
| | Ulmus alba | Ulmus alba | 2" caliper 50' x 35' |
| | Ulmus alba | Ulmus alba | 2" caliper 50' x 35' |
| | Ulmus alba | Ulmus alba | 2" caliper 50' x 35' |
| | Ulmus alba | Ulmus alba | 2" caliper 50' x 35' |
| | Ulmus alba | Ulmus alba | 2" caliper 50' x 35' |
| | Ulmus alba | Ulmus alba | 2" caliper 50' x 35' |
| | Ulmus alba | Ulmus alba | 2" caliper 50' x 35' |
| | Ulmus alba | Ulmus alba | 2" caliper 50' x 35' |

PRELIMINARY
NOT FOR
CONSTRUCTION

BOISE, ID

C.W. MOORE PLAZA
250 S. 5TH ST. BOISE, ID 83702
(208) 343-4635 FAX (208) 343-1858
http://www.cshqa.com

HENRY'S FARMER'S MARKET
1511 W BANNOCK ST
CSHQA

CUP
SUBMITTAL
ADDENDUM
ONE

PROJECT
10102.00
10-15-10
DRAWN
KOH
CHECKED
KOH

HENRY'S
FARMER'S MARKET

DEVELOPER

Parkinsons Corporation

LANDSCAPE
PLAN

SHEET
2

ORIGINAL SHEET SIZE
30" X 42"