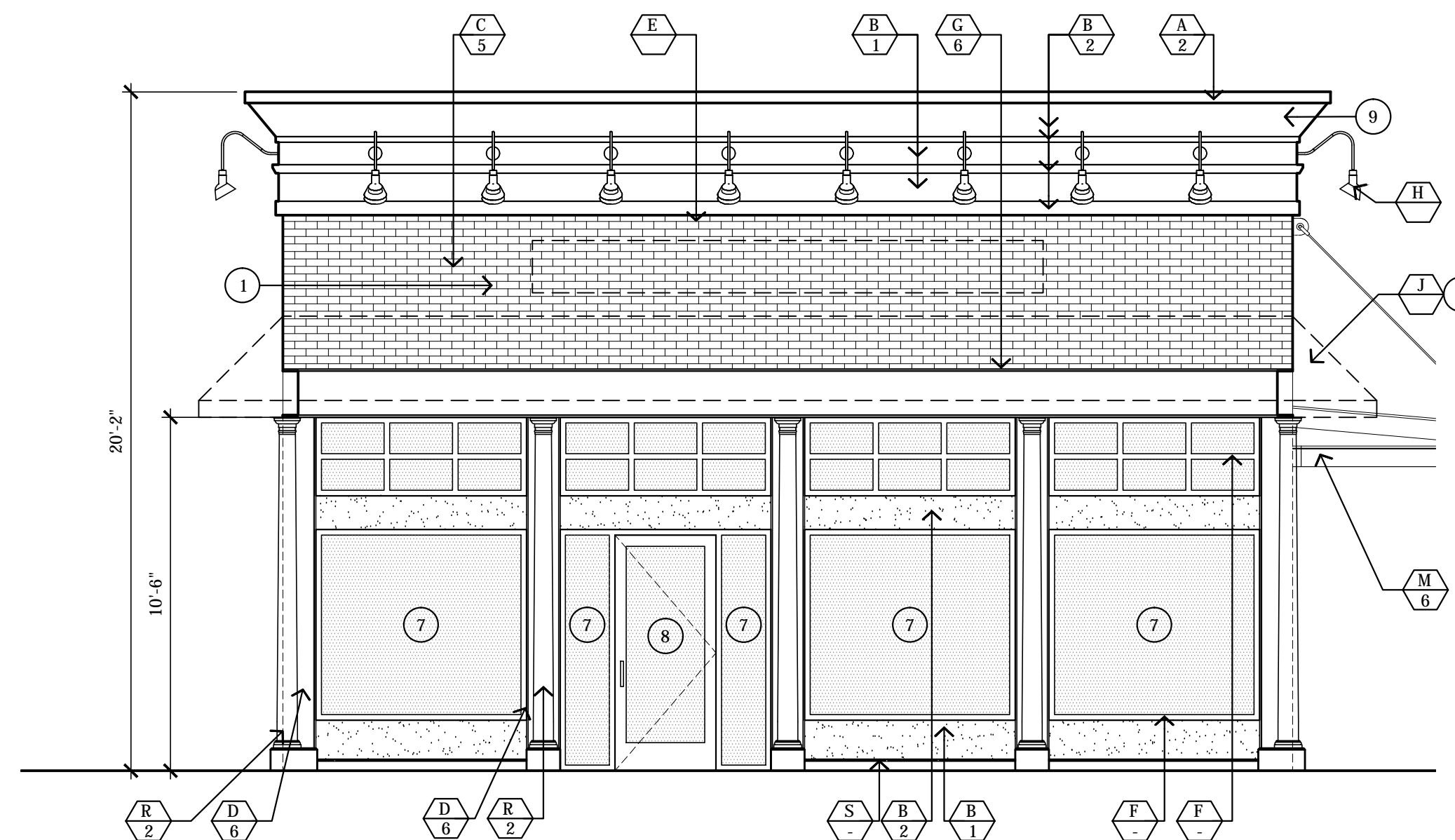
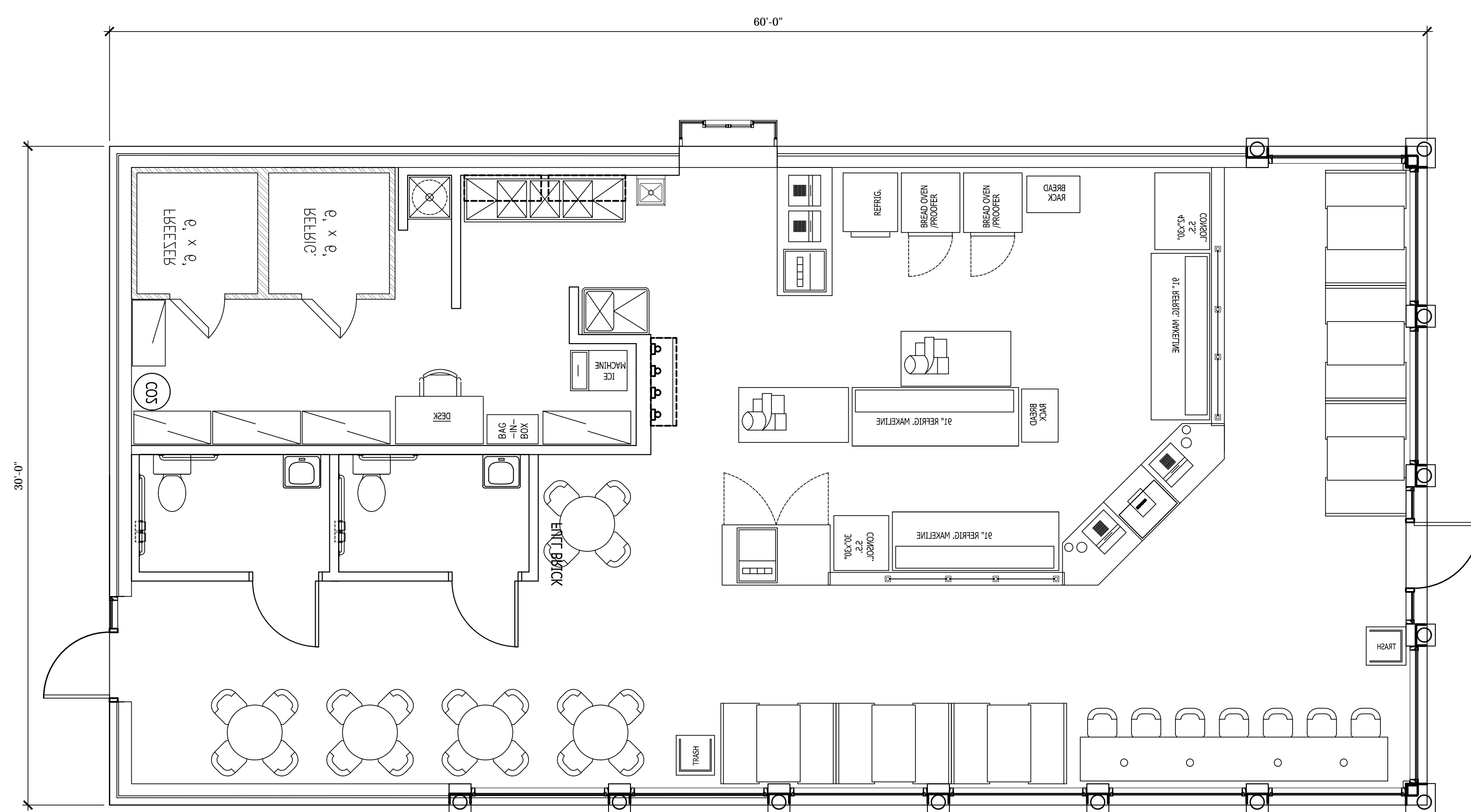


WEST ELEVATION
SCALE: 1/4"=1'-0"



EAST ELEVATION
SCALE: 1/4"=1'-0"



FLOOR PLAN
SCALE: 1/4"=1'-0"

KEYED NOTES

- 1 JJ'S APPROVED TENANT SIGNAGE (UNDER SEPARATE PERMIT).
- 2 PROPOSED FIRE RESISTANT CANVAS AWNING (UNDER SEPARATE PERMIT).
- 3 METAL CANOPY
- 4 DOWNSPOUT - PAINT TO MATCH SURROUNDINGS.
- 5 DRIVE THRU WINDOW
- 6 PIPE BOLLARD
- 7 ALUMINUM / GLASS STOREFRONT BRONZE TINTED GLAZING.
- 8 ALUMINUM STOREFRONT DOOR.
- 9 FOAM CORNICE
- 10 PAINTED "SUPER SEAL"
- 11 LINE OF ROOF
- 12 S.E.S. - PAINT TO MATCH
- 13 CO2 FILL STATION - PAINT TO MATCH - PROVIDE FULL PERIMETER CAULKING.

MATERIALS

- A METAL FLASHING
- B STUCCO FINISH
- C FACE BRICK
- D STRUCTURAL COLUMN
- E JJ'S APPROVED SIGN BY TENANT. - APPROVED UNDER SEPARATE REVIEW AND PERMIT.
- F KAWNEER 451T ALUM/GLASS STOREFRONT (1/4" INSULATED BRONZE TINTED TEMPERED GLASS, 20% MAX. REFLECTIVITY) HARTFORD GREEN FINISH
- G STRUCTURAL BEAM
- H GOOSENECK LIGHT FIXTURE
McFADDEN TREND LIGHTING 44170D-60W BULBS SHALL NOT EXTEND BELOW DOME (FULL CUT OFF)
- J FIRE RESISTANT CANVAS AWNING
- K DRIVE THRU WINDOW - STATUARY BRONZE FINISH READY ACCESS BO-10
- L STENCIL PROVIDED BY OWNER. 6'-6" SUPER SEAL DIAMETER
- M METAL CANOPY
- N DOWNSPOUT
- P STEEL PIPE BOLLARD
- Q OVERFLOW DRAIN
- R 8" DECORATIVE (COLONIAL STYLE) COLUMN BY CAMPBELLSVILLE INDUSTRIES INC.
- S POURED IN PLACE CONCRETE CURB

FINISHES

- 1 PT-8 BENJAMIN MOORE HC-32, EGGSHELL FINISH; COLOR: 'STANDISH WHITE'
- 2 PT-6 BENJAMIN MOORE READY MIX PAINT, EGGSHELL FINISH; COLOR: 'ESSEX GREEN'
- 3 PT-2 GLIDDEN 120 OOVRI5/510, EGGSHELL FINISH; COLOR: 'CHERRY RED'
- 4 PT-3 BENJAMIN MOORE READY MIX PAINT, EGGSHELL FINISH; COLOR: 'WHITE DOVE'
- 5 SF-5 SHELBY GLEN GARY HEARTLAND SERIES 'RED BRICK', ROLLED EDGE FACE BRICK WITH STANDARD GRAY MORTAR
- 6 PT-9 BENJAMIN MOORE 2120-10, EGGSHELL FINISH; COLOR: 'JET BLACK'
- 7 PT-7 PITTSBURG PAINT, FLAT FINISH; COLOR: 'SAFETY YELLOW'
- 8 STATUARY BRONZE FINISH
- 9 PAINT TO MATCH BRICK

GENERAL NOTES

- 1. ALL ROOF MOUNTED EQUIPMENT SHALL BE FULLY SCREENED BY THE PARAPET.
- 2. E.I.F.S. SHALL BE "STO" ESR-1720 OR EQUAL.
- 3. ALL SIGNAGE SHALL BE REVIEWED AND APPROVED UNDER SEPARATE SUBMITTAL.
- 4. ALL BUILDING MOUNTED UTILITY BOXES ARE TO BE PAINTED TO MATCH ADJACENT COLORS.

THIS DRAWING CONTAINS INFORMATION WHICH IS THE PROPRIETARY PROPERTY OF ALC ARCHITECTURE. NO UNAUTHORIZED REUSE OR DUPLICATION OF THESE PLANS OR ANY INFORMATION CONTAINED HEREIN, WITHOUT THE EXPRESS WRITTEN CONSENT OF ALC ARCHITECTURE. THIS DRAWING IS NOT TO BE USED FOR CONSTRUCTION UNTIL IT IS SIGNED BY THE ARCHITECT.
COPYRIGHT © ALC ARCHITECTURE

NO.	REVISIONS	DATE

ALC collaborative
 architecture
 6410 W. Lockport Dr. - Boise, ID 83703
 208.514.2713

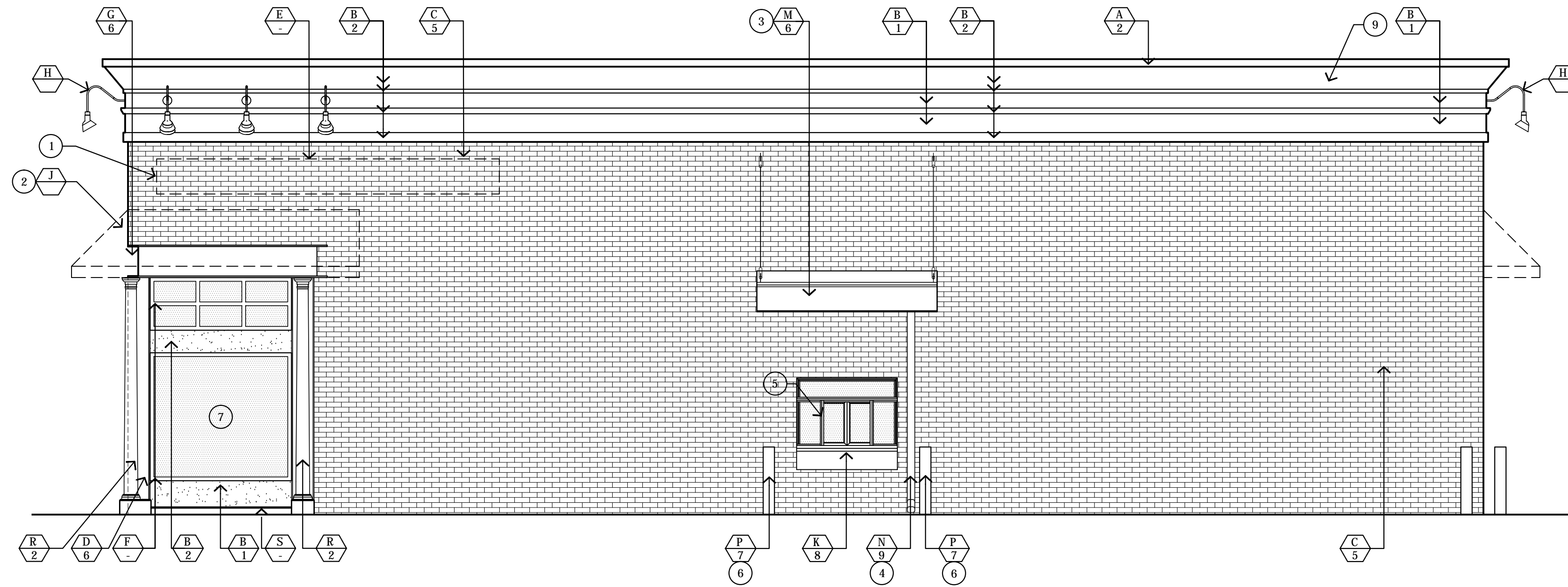
JIMMY JOHNS
 OVERLAND AND VISTA
 BOISE, IDAHO
 SITE IMPROVEMENT FOR:

DRAWN BY: JRL
 DATE: 10.25.2011
 JOB #: 11025

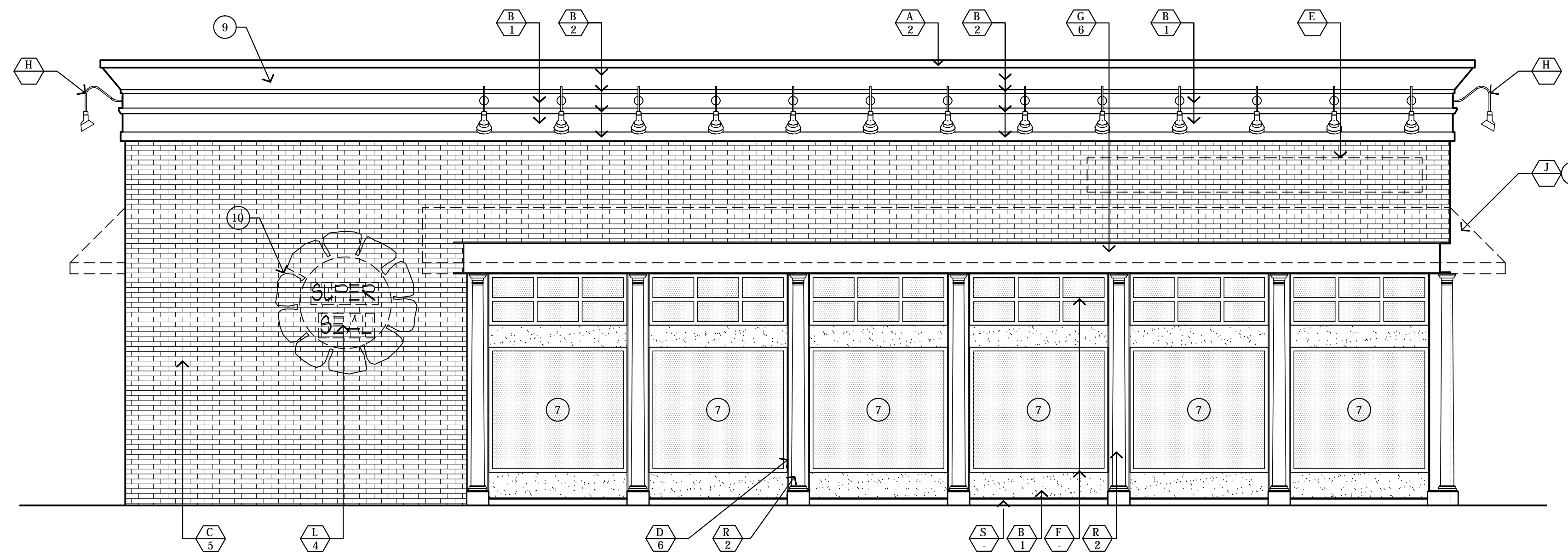
DR1.1

FLOOR PLAN / ELEVATIONS

DESIGN REVIEW



NORTH ELEVATION
SCALE: 1/4"=1'-0"



SOUTH ELEVATION
SCALE: 1/4"=1'-0"

KEYED NOTES

- 1 JJ'S APPROVED TENANT SIGNAGE (UNDER SEPARATE PERMIT).
- 2 PROPOSED FIRE RESISTANT CANVAS AWNING (UNDER SEPARATE PERMIT).
- 3 METAL CANOPY
- 4 DOWNSPOUT - PAINT TO MATCH SURROUNDINGS.
- 5 DRIVE THRU WINDOW
- 6 PIPE BOLLARD
- 7 ALUMINUM / GLASS STOREFRONT BRONZE TINTED GLAZING.
- 8 ALUMINUM STOREFRONT DOOR.
- 9 FOAM CORNICE
- 10 PAINTED "SUPER SEAL"
- 11 LINE OF ROOF
- 12 S.E.S. - PAINT TO MATCH
- 13 CO2 FILL STATION - PAINT TO MATCH - PROVIDE FULL PERIMETER CAULKING.

MATERIALS

- A METAL FLASHING
- B STUCCO FINISH
- C FACE BRICK
- D STRUCTURAL COLUMN
- E JJ'S APPROVED SIGN BY TENANT. - APPROVED UNDER SEPARATE REVIEW AND PERMIT.
- F KAWNEER 451T ALUM/GLASS STOREFRONT (1/4" INSULATED BRONZE TINTED TEMPERED GLASS, 20% MAX. REFLECTIVITY) HARTFORD GREEN FINISH
- G STRUCTURAL BEAM
- H GOOSENECK LIGHT FIXTURE
McFADDEN TREND LIGHTING 44170D-60W BULBS SHALL NOT EXTEND BELOW DOME (FULL CUT OFF)
- I FIRE RESISTANT CANVAS AWNING
- J DRIVE THRU WINDOW - STATUARY BRONZE FINISH READY ACCESS BO-10
- K STENCIL PROVIDED BY OWNER. 6'-6" SUPER SEAL DIAMETER
- L METAL CANOPY
- M DOWNSPOUT
- N STEEL PIPE BOLLARD
- O OVERFLOW DRAIN
- P 8" DECORATIVE (COLONIAL STYLE) COLUMN BY CAMPBELLSVILLE INDUSTRIES INC.
- S POURED IN PLACE CONCRETE CURB

FINISHES

- 1 PT-8 BENJAMIN MOORE HC-32, EGGSHELL FINISH; COLOR: 'STANDISH WHITE'
- 2 PT-6 BENJAMIN MOORE READY MIX PAINT, EGGSHELL FINISH; COLOR: 'ESSEX GREEN'
- 3 PT-2 GLIDDEN 120 OOVRI5/510, EGGSHELL FINISH; COLOR: 'CHERRY RED'
- 4 PT-3 BENJAMIN MOORE READY MIX PAINT, EGGSHELL FINISH; COLOR: 'WHITE DOVE'
- 5 SF-5 SHELBY GLEN GARY HEARTLAND SERIES 'RED BRICK', ROLLED EDGE FACE BRICK WITH STANDARD GRAY MORTAR
- 6 PT-9 BENJAMIN MOORE 2120-10, EGGSHELL FINISH; COLOR: 'JET BLACK'
- 7 PT-7 PITTSBURG PAINT, FLAT FINISH; COLOR: 'SAFETY YELLOW'
- 8 STATUARY BRONZE FINISH
- 9 PAINT TO MATCH BRICK

GENERAL NOTES

- 1. ALL ROOF MOUNTED EQUIPMENT SHALL BE FULLY SCREENED BY THE PARAPET.
- 2. E.I.F.S. SHALL BE "STO" ESR-1720 OR EQUAL.
- 3. ALL SIGNAGE SHALL BE REVIEWED AND APPROVED UNDER SEPARATE SUBMITTAL.
- 4. ALL BUILDING MOUNTED UTILITY BOXES ARE TO BE PAINTED TO MATCH ADJACENT COLORS.

NO.	REVISIONS	DATE

ALC collaborative
 architecture
 6410 W. Lockport Dr. - Boise, ID 83703
 208.514.2713

JIMMY JOHNS
 OVERLAND AND VISTA
 BOISE, IDAHO

DRAWN BY: JRL
 DATE: 10.25.2011
 JOB #: 11025

DR1.2
 ELEVATIONS

THIS DRAWING CONTAINS INFORMATION WHICH IS THE PROPRIETARY PROPERTY OF ALC ARCHITECTURE. NO UNAUTHORIZED REUSE OR DUPLICATION OF THESE PLANS OR ANY INFORMATION CONTAINED HEREIN, WITHOUT THE EXPRESS WRITTEN CONSENT OF ALC ARCHITECTURE. THIS DRAWING IS NOT TO BE USED FOR CONSTRUCTION UNTIL IT IS SIGNED BY THE ARCHITECT.
 COPYRIGHT © ALC ARCHITECTURE