

PROJECT

RIVER 8 LOFTS

620 S. 9TH STREET
BOISE, IDAHO

SEAL

This document is the property of THE ARCHITECTS
OFFICE, PLLC and is not to be duplicated without
written authorization.
© THE ARCHITECTS OFFICE, PLLC

FILE

DATE
DECEMBER 8, 2012

FILE NO.
10-224 A2.7

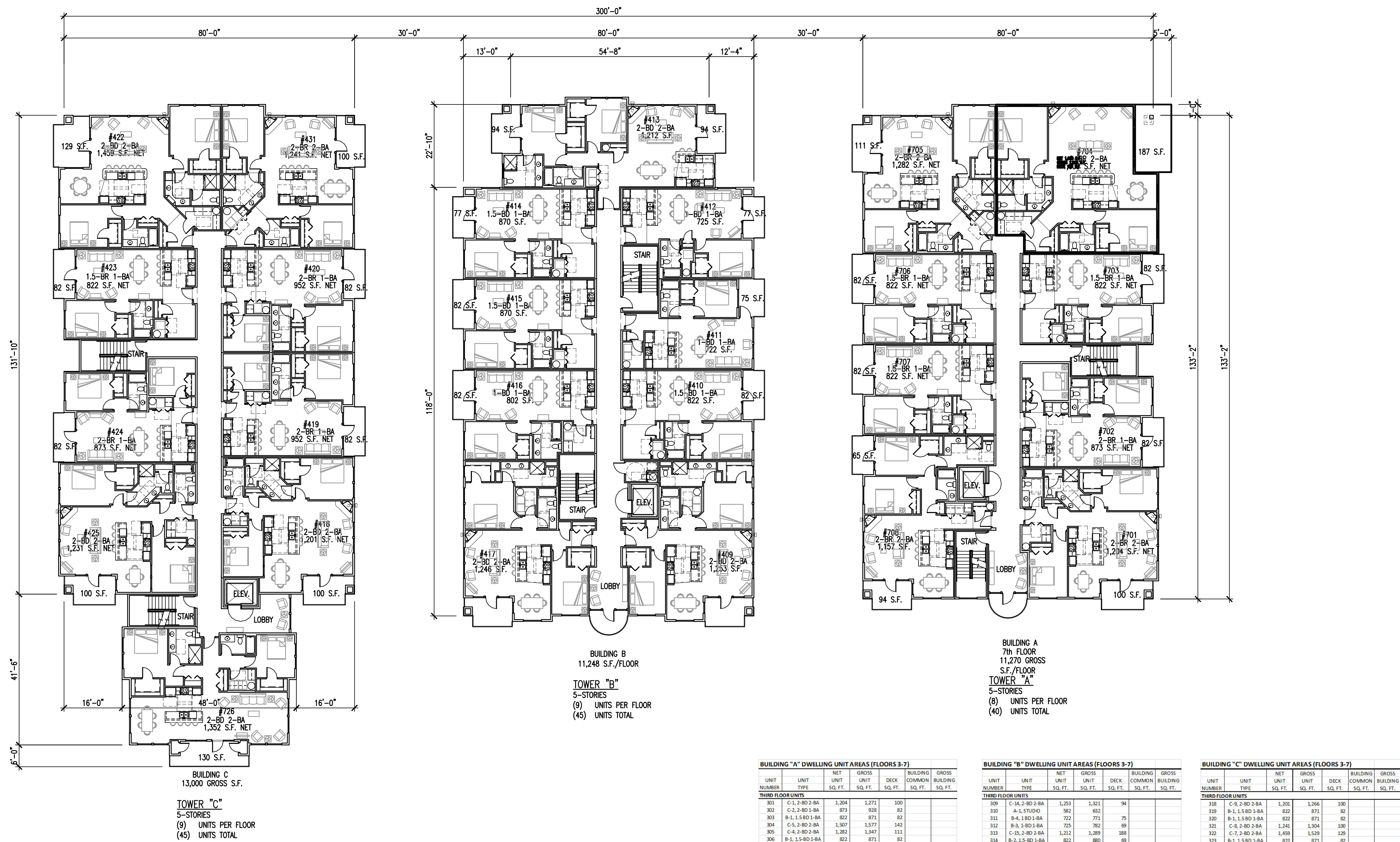
DRAWN
JPP

REVISIONS

SHEET

A2.7

SEVENTH FLOOR PLAN



BUILDING "A" DWELLING UNIT AREA (FLOORS 3-7)									
UNIT		NET	GROSS		BUILDING		GROSS		
NUMBER	TYPE	SQ. FT.	UNIT	SQ. FT.	COMMON	SQ. FT.	BUILDING	SQ. FT.	
THIRD FLOOR UNITS									
301	C-1, 2-BD-2 BA	1,204	1,271	100					
302	C-2, 2-BD-1 BA	873	928	82					
303	B-1, 1.5-BD-1 BA	822	871	82					
304	C-5, 2-BD-1 BA	1,507	1,577	142					
305	C-4, 2-BD-1 BA	1,282	1,347	111					
306	B-1, 1.5-BD-1 BA	822	871	82					
307	A-1, STUDIO	842	873	82					
308	C-3, 2-BD-1 BA	1,157	1,235	158					
THIRD FLOOR TOTALS		9,639	10,322	757	2,120			11,126	
FOURTH FLOOR UNITS									
401	C-1, 2-BD-2 BA	1,204	1,271	100					
402	C-2, 2-BD-1 BA	873	928	82					
403	B-1, 1.5-BD-1 BA	822	871	82					
404	C-5, 2-BD-1 BA	1,507	1,577	142					
405	C-4, 2-BD-1 BA	1,282	1,347	111					
406	B-1, 1.5-BD-1 BA	822	871	82					
407	B-1, 1.5-BD-1 BA	822	871	82					
408	C-3, 2-BD-1 BA	1,157	1,235	158					
FOURTH FLOOR TOTALS		8,489	8,971	839	1,889			11,167	
FIFTH FLOOR UNITS									
501	C-1, 2-BD-2 BA	1,204	1,271	100					
502	C-2, 2-BD-1 BA	873	928	82					
503	B-1, 1.5-BD-1 BA	822	871	82					
504	C-5, 2-BD-1 BA	1,507	1,577	142					
505	C-4, 2-BD-1 BA	1,282	1,347	111					
506	B-1, 1.5-BD-1 BA	822	871	82					
507	B-1, 1.5-BD-1 BA	822	871	82					
508	C-3, 2-BD-1 BA	1,157	1,235	158					
FIFTH FLOOR TOTALS		8,489	8,971	839	1,889			11,167	
SIXTH FLOOR UNITS									
601	C-1, 2-BD-2 BA	1,204	1,271	100					
602	C-2, 2-BD-1 BA	873	928	82					
603	B-1, 1.5-BD-1 BA	822	871	82					
604	C-5, 2-BD-1 BA	1,507	1,577	142					
605	C-4, 2-BD-1 BA	1,282	1,347	111					
606	B-1, 1.5-BD-1 BA	822	871	82					
607	B-1, 1.5-BD-1 BA	822	871	82					
608	C-3, 2-BD-1 BA	1,157	1,235	158					
SIXTH FLOOR TOTALS		8,489	8,971	839	1,889			11,167	
SEVENTH FLOOR UNITS									
701	C-1, 2-BD-2 BA	1,204	1,271	100					
702	C-2, 2-BD-1 BA	873	928	82					
703	B-1, 1.5-BD-1 BA	822	871	82					
704	C-5, 2-BD-1 BA	1,507	1,577	142					
705	C-4, 2-BD-1 BA	1,282	1,347	111					
706	B-1, 1.5-BD-1 BA	822	871	82					
707	B-1, 1.5-BD-1 BA	822	871	82					
708	C-3, 2-BD-1 BA	1,157	1,235	158					
SEVENTH FLOOR TOTALS		8,591	9,074	884	1,795			11,270	
BUILDING A TOTALS		42,307	44,719	4,158	9,482			55,897	

BUILDING "B" DWELLING UNIT AREAS (FLOORS 3-7)							
UNIT NUMBERS	UNIT TYPE	NET		GROSS		BUILDING COMMON	GROSS BUILDING FLOOR
		SQ. FT.	SQ. FT.	SQ. FT.	SQ. FT.		
THIRD FLOOR							
309	C-14, 2, 0-B-A	1,253	1,321	94			
311	B-4, 1, 1-D-B-A	722	771	75			
312	B-3, 1, 8-D-B-A	1,212	1,289	188			
313	C-15, 2, 0-B-A	1,212	1,289	188			
314	B-2, 1, 5-D-B-A	852	880	69			
316	B-4, 1, 1-D-B-A	852	871	82			
317	B-2, 1, 5-D-B-A	562	612	62			
317	C-13, 2, 2-B-A	1,256	1,314	94			
FOURTH FLOOR TOTALS		7,546	8,472	671	2,548		11,165
FOURTH FLOOR UNITS							
409	C-14, 2, 0-B-A	1,253	1,321	94			
410	B-4, 1, 1-D-B-A	852	871	82			
411	B-4, 1, 8-D-B-A	722	771	75			
412	B-3, 1, 8-D-B-A	1,212	1,289	188			
413	C-15, 2, 0-B-A	1,212	1,289	188			
414	B-2, 1, 5-D-B-A	852	880	85			
415	B-4, 1, 1-D-B-A	852	871	82			
417	C-13, 2, 2-B-A	1,256	1,314	94			
FIFTH FLOOR TOTALS		8,436	9,950	835	1,987		12,241
FIFTH FLOOR UNITS							
509	C-14, 2, 0-B-A	1,253	1,321	94			
510	B-4, 1, 1-D-B-A	852	871	82			
511	B-4, 1, 8-D-B-A	722	771	75			
512	B-3, 1, 8-D-B-A	1,212	1,289	188			
513	C-15, 2, 0-B-A	1,212	1,289	188			
514	B-2, 1, 5-D-B-A	852	880	69			
516	B-4, 1, 1-D-B-A	852	871	82			
517	C-13, 2, 2-B-A	1,256	1,314	94			
SIXTH FLOOR TOTALS		8,436	9,950	835	1,987		12,241
SIXTH FLOOR UNITS							
609	C-14, 2, 0-B-A	1,253	1,321	94			
610	B-4, 1, 1-D-B-A	852	871	82			
611	B-4, 1, 8-D-B-A	722	771	75			
612	B-3, 1, 8-D-B-A	1,212	1,289	188			
613	C-15, 2, 0-B-A	1,212	1,289	188			
614	B-2, 1, 5-D-B-A	852	880	69			
615	B-4, 1, 1-D-B-A	852	871	82			
616	B-4, 1, 8-D-B-A	852	851	82			
617	C-13, 2, 2-B-A	1,256	1,314	94			
SEVENTH FLOOR TOTALS		8,436	9,950	835	1,987		12,241
SEVENTH FLOOR UNITS							
709	C-14, 2, 0-B-A	1,253	1,321	94			
710	B-4, 1, 1-D-B-A	852	871	82			
711	B-4, 1, 8-D-B-A	722	771	75			
712	B-3, 1, 8-D-B-A	1,212	1,289	188			
713	C-15, 2, 0-B-A	1,212	1,289	188			
714	B-2, 1, 5-D-B-A	852	880	69			
715	B-4, 1, 1-D-B-A	852	871	82			
716	B-4, 1, 8-D-B-A	852	851	82			
717	C-13, 2, 2-B-A	1,256	1,314	94			
EIGHTH FLOOR TOTALS		8,436	9,950	835	1,987		12,241
EIGHTH FLOOR UNITS							
BUILDING B TOTALS		41,650	47,272	4,011	10,496		56,157

BUILDING C-2 DWELLING UNIT AREAS (FLOORS 3-7)						
UNIT NUMBER	UNIT TYPE	NET SQ. FT.	GROSS SQ. FT.	DECK SQ. FT.	BUILDING COMMON SQ. FT.	GROSS BUILDING SQ. FT.
THIRD FLOOR						
318	C-2, 2-BD 2 BA	1,201	1,266	100		82
319	C-1, 1-5/2 BD 1 BA	823	871	82		82
320	C-1, 1-5/2 BD 1 BA	822	871	82		82
321	C-2, 2-BD 2 BA	1,241	1,304	100		82
322	C-7, 2-BD 1 BA	1,459	1,529	129		82
323	C-7, 2-BD 1 BA	822	871	82		82
324	C-2, 2-BD 1 BA	873	928	82		82
325	C-10, 2-BD 1 BA	1,231	1,298	100		82
326	C-11, 2-BD 2 BA	1,352	1,439	130		82
THIRD FLOOR TOTALS		9,823	10,377	887	2,290	13,000
FOURTH FLOOR						
418	C-2, 2-BD 2 BA	1,201	1,266	100		82
419	C-12, 2-BD 1 BA	952	1,005	82		82
420	C-12, 2-BD 1 BA	952	1,005	82		82
421	C-8, 2-BD 2 BA	1,241	1,304	100		82
422	C-7, 2-BD 1 BA	1,459	1,529	129		82
423	C-1, 1-5/2 BD 1 BA	823	871	82		82
424	C-2, 2-BD 1 BA	873	928	82		82
425	C-10, 2-BD 1 BA	1,231	1,298	100		82
426	C-11, 2-BD 2 BA	1,352	1,439	130		82
FOURTH FLOOR TOTALS		10,083	10,645	887	2,010	13,000
FIFTH FLOOR						
518	C-2, 2-BD 2 BA	1,201	1,266	100		82
519	C-12, 2-BD 1 BA	952	1,005	82		82
520	C-12, 2-BD 1 BA	952	1,005	82		82
521	C-8, 2-BD 2 BA	1,241	1,304	100		82
522	C-7, 2-BD 1 BA	1,459	1,529	129		82
523	C-1, 1-5/2 BD 1 BA	823	871	82		82
524	C-2, 2-BD 1 BA	873	928	82		82
525	C-10, 2-BD 1 BA	1,231	1,298	100		82
526	C-11, 2-BD 2 BA	1,352	1,439	130		82
FIFTH FLOOR TOTALS		10,083	10,645	887	2,010	13,000
SIXTH FLOOR						
618	C-2, 2-BD 2 BA	1,201	1,266	100		82
619	C-12, 2-BD 1 BA	952	1,005	82		82
620	C-12, 2-BD 1 BA	952	1,005	82		82
621	C-8, 2-BD 2 BA	1,241	1,304	100		82
622	C-7, 2-BD 1 BA	1,459	1,529	129		82
623	C-1, 1-5/2 BD 1 BA	822	871	82		82
624	C-2, 2-BD 1 BA	873	928	82		82
625	C-10, 2-BD 1 BA	1,231	1,298	100		82
626	C-11, 2-BD 2 BA	1,352	1,439	130		82
SIXTH FLOOR TOTALS		10,083	10,645	887	2,010	13,000
SEVENTH FLOOR						
718	C-2, 2-BD 2 BA	1,201	1,266	100		82
719	C-12, 2-BD 1 BA	952	1,005	82		82
720	C-12, 2-BD 1 BA	952	1,005	82		82
721	C-8, 2-BD 2 BA	1,241	1,304	100		82
722	C-7, 2-BD 1 BA	1,459	1,529	129		82
723	C-1, 1-5/2 BD 1 BA	822	871	82		82
724	C-2, 2-BD 1 BA	873	928	82		82
725	C-10, 2-BD 1 BA	1,231	1,298	100		82
726	C-11, 2-BD 2 BA	1,352	1,439	130		82
SEVENTH FLOOR TOTALS		10,083	10,645	887	2,010	13,000
BUILDING C TOTALS		50,155	52,957	4,435	10,410	65,000