

LUMINAIRE SCHEDULE

| TYPE | DESCRIPTION | MOUNTING | LAMPS | WATTS / LUMINAIRE | VOLTAGE | EMERGENCY | MANUFACTURER | CATALOG NUMBER | ALTERNATE MANUFACTURERS | NOTES |
|------|---|------------|---|----------------------|---------|-----------|--------------|---|----------------------------|-------|
| B1 | BOLLARD LUMINAIRE, LED SOURCE, DIE-CAST ALUMINUM HOUSING, STRAIGHT SHAFT, DARK BRONZE FINISH | SEE DETAIL | LED ENGINE, 27 4000K | 29 | 277 | N/A | KIM LIGHTING | BNB1-27LSKV-DB | PRE-BID APPROVED EQUAL | |
| P1 | POLE LIGHT, LED SOURCE, FLAT GLASS LENS, TYPE V DISTRIBUTION, SPIN ALUMINUM HOUSING WITH REVEALS, DARK BRONZE FINISH, WITH STRAIGHT ROUND STEEL POLE, 20', DARK BRONZE FINISH | SEE DETAIL | LED ENGINE, 10862 LUMEN 4000K | 120 | 277 | N/A | KIM LIGHTING | HEAD NO. CC-21-A-5-250-120L-4K-277-DB-DBREV POLE NO. KRS20-4120-A-DB | PRE-BID APPROVED EQUAL | |
| P2 | POLE LIGHT, PEDESTRIAN TYPE, LED SOURCE, FLAT GLASS LENS, TYPE II DISTRIBUTION, SPIN ALUMINUM HOUSING WITH REVEALS, DARK BRONZE FINISH, WITH STRAIGHT ROUND STEEL POLE, 14', DARK BRONZE FINISH | SEE DETAIL | LED ENGINE, 3414 LUMEN 4000K | 66 | 277 | N/A | KIM LIGHTING | HEAD NO. CC-17-A-2-60-4K-277-DB-DBREV POLE NO. KRS14-4120-A-DB | PRE-BID APPROVED EQUAL | |

LUMINAIRE SCHEDULE NOTES:

BOLLARD TYPE
BL**KIM LIGHTING****BNB**

Bounce Bollard

revision 5/31/11 • bnb.pdf

Type:**Job:****Catalog number:****Approvals:**

Fixture Electrical Module Luminaire Finish Options

See page 4

See page 5

Date:**Page: 1 of 5**

Specifications

BNB1 and BNB4

70 to 100 watt PMH

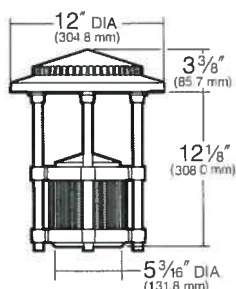
70 to 100 watt HPS

Medium Base Lamps

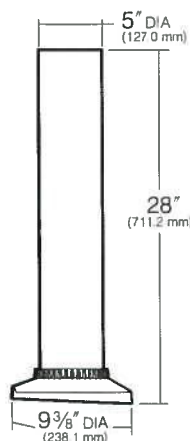
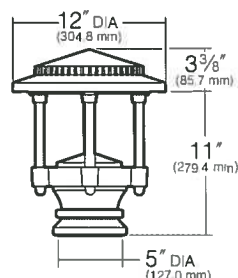
42 watt Compact Fluorescent

18, 27 or 36 LED

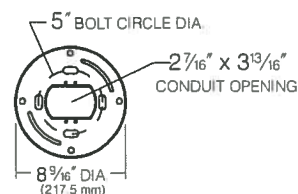
BNB1



BNB4



Straight



Hood and Lens Frame: Die-cast, low copper (<0.6% Cu) aluminum alloy with stainless steel hinge. Hood is opened by loosening one stainless steel captive button-head socket cap screw. 3/16" thick clear flat tempered glass lens seals against the lens frame by a one-piece molded silicone gasket. Lens frame seals against the hood by a one-piece extruded and vulcanized silicone gasket.

Reflector Module: Specular Alzak® optical segments are rigidly mounted within an aluminum frame and fastened securely to the hood. A porcelain medium base socket rated 4KV is provided for HID, and a GX24q-4 universal socket is provided for fluorescent. No reflector provided for LED.

Body Support: **BNB1:** Die-cast, low copper (<0.6% Cu) aluminum alloy flanges compress a ribbed extruded aluminum chamber. The four heavy wall extruded aluminum support rods are mechanically fastened to the lens frame with stainless steel fasteners. The support rods are held in position through die-cast arms and mechanically fastened at the bottom with a custom aluminum bolt. The electrical wiring is channeled through a support rod with a brass bushing. **BNB4:** Heavy cast low copper (<0.6% Cu) aluminum alloy wiring chamber. The four extruded aluminum support rods are mechanically fastened between the lens frame and wiring chamber with stainless steel bolts. The wiring is channeled through the support rods.

Body Cap: Die-cast, low copper (<0.6% Cu) aluminum, retained by two captive stainless steel screws. Optional matte black finish to eliminate bounce light. See page 5.

Shaft: One-piece aluminum extrusion, .125" minimum wall thickness and two internal 3/16"-16 mounting rods sandwich shaft between base and head.

Anchor Base Plate: A heavy cast aluminum anchor base is provided for mounting to the four 3/8" x 10" + 2" zinc plated J-bolts, each with two nuts and washers. A rigid pressed board template is provided to secure the anchor bolts during concrete pour (5" B.C.D.)

Electrical Module: Factory mounted to a rigid harness attached to the anchor base. **HID:** High Power Factor with starting temperatures of -20°F for PMH and -40°F for HPS lamp modes. **Fluorescent:** High Power Factor with starting temperature of 0°F. **LED:** A total of 9 LED emitters configured in a rectangular array comprised together as a module. Two (2) modules for 18 LED version; three (3) modules for 27 LED version; and four (4) modules for 36 LED version. Available in 3500K and 5100K.

LED Driver: Rated for 18 LED, 27 LED or 36 LED. Universal voltage from 120 to 277V with a ±10% tolerance. -40°F starting temperature. All drivers are Underwriters Laboratories recognized.

Finish/Color: Super TGIC thermoset polyester powder coat paint, 2.5 mil nominal thickness, applied over a titanated zirconium conversion coating; 2500 hour salt spray test endurance rating. Standard colors are Black, Dark Bronze, Light Gray, Stealth Gray™, Platinum Silver, or White. Custom colors are available.

CAUTION: Fixtures must be grounded in accordance with national, state and/or local electrical codes. Failure to do so may result in serious personal injury.

Listings and Ratings

| | | | |
|--|------------|----|-------------|
| ETL ¹ to UL Standards 1598 & 8750 | IP46 Rated | CE | 25C Ambient |
| (FCO) Full Cutoff ² | | | |

¹Suitable for wet locations²Dark Sky Legislation Compliant

KIM LIGHTING RESERVES THE RIGHT TO CHANGE SPECIFICATIONS WITHOUT NOTICE



**BNB**

Bounce Bollard

revision 5/31/11 • bnb.pdf

Type:

Job:

Page: 4 of 5



Standard Features

Fixture



Cat. No. ☒ **BNB1** ☐ BNB2 ☐ BNB3 ☐ BNB4 ☐ BNB5 ☐ BNB6

Electrical Module

PMH = Pulse Start Metal Halide

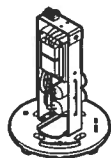
HPS = High Pressure Sodium

PL = Compact Fluorescent

LED = Light Emitting Diode

Lamp Watts Line
Type Type Volts
70 PMH 120

For PMH, HPS and PL.
See footnote 2 below for LED



NOTE: For lamp/ballast information outside of the U.S.A. and Canada, please consult your local Kim representative.




Cat. Nos. for Electrical Modules available:

Pulse Start Metal Halide

☐ **70PMH120** ☐ **100PMH120**
☐ **70PMH208** ☐ **100PMH208**
☐ **70PMH240** ☐ **100PMH240**
☐ **70PMH277** ☐ **100PMH277**
☐ **70PMH347** ☐ **100PMH347**

High Pressure Sodium

☐ **70HPS120** ☐ **100HPS120**
☐ **70HPS208** ☐ **100HPS208**
☐ **70HPS240** ☐ **100HPS240**
☐ **70HPS277** ☐ **100HPS277**
☐ **70HPS347** ☐ **100HPS347**

| | | | | |
|-------------------|--|---|--|---|
| Lamp | ED-17, Coated | ED-17, Coated | ED-17, Coated | ED-17, Coated |
| Socket | Medium Base | Medium Base | Medium Base | Medium Base |
| ANSI Ballast Type | M-98, M-143 | M-90, M-140 | S62 | S54 |
| | Compact Fluor. | LED | | |
| | <input type="checkbox"/> 42PL120¹ <input type="checkbox"/> 42PL208¹ <input type="checkbox"/> 42PL240¹ <input type="checkbox"/> 42PL277¹ | <input type="checkbox"/> 18L3KUV² <input type="checkbox"/> 18L5KUV²  IES Type 1 | <input type="checkbox"/> 27L3KUV² <input checked="" type="checkbox"/> 27L5KUV²  IES Type 3 | <input type="checkbox"/> 36L3KUV² <input type="checkbox"/> 36L5KUV²  IES Type 5 |
| Lamp | Compact Fluor. | LED | LED | LED |
| Socket | GX24q-4 | N/A | N/A | N/A |

¹42PL operates one 26, 32, or 42 watt lamp at 120 thru 277 volts (50-60 Hz).

NOTE: Coated lamps are recommended.

²For LED, 18L = 18 LED Emitters; 27L = 27 LED Emitters; 36L = 36 LED Emitters; 3K = 3500K color temperature; 5K = 5100K color temperature; UV = Universal Voltage from 120 to 277V with a $\pm 10\%$ tolerance.

Luminaire Finish

Super TGIC powder coat paint over a titanated zirconium conversion coating on fixture and shaft.

Color: Black ☒ **Dark Bronze** Light Gray Stealth Gray™ Platinum Silver White Custom Color³

Cat. No.: ☐ **BL** ☒ **DB** ☐ **LG** ☐ **SG** ☐ **PS** ☐ **WH** ☐ **CC**

³Custom colors subject to additional charges, minimum quantities and extended lead times. Consult representative. Custom color description: _____

**BNB**

Bounce Bollard

revision 5/31/11 • bnb.pdf

Type:

Job:

Page: 5 of 5



Optional Features

Fusing (internal only):

Cat. No. (see chart at right)
☐ No Option

High temperature fuse holders factory installed inside the fixture housing. Fuse is included.

Line Volts: 120V 208V 240V 277V 347V
 Cat. No.: ☐ SF ☐ DF ☐ DF ☐ SF ☐ SF

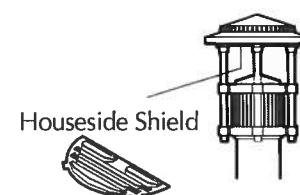


Single Fuse

Houseside Shield

Cat. No. ☐ HS
☐ No Option

Optional shield made of stamped louvered aluminum allows streetside light to pass while blocking houseside light. Blackened reflector panels within the reflector also reduces the houseside reflection.



Houseside Shield

Matte Black Body Cap:

Cat. No. ☐ BBC
☐ No Option

For locations where complete cutoff optical control is desired, an Optional Matte Black Body Cap can be specified. This significantly reduces the indirect up-light distribution, providing complete cutoff. To further reduce the nighttime visual presence of the fixture, specify Black or Dark Bronze luminaire finish.



Optional Cap

Textured Glass Lens

Cat. No. ☐ TG
☐ No Option

Unique textured glass reduces LED glare and improves visual comfort.

Emergency Battery Back-up

Cat. No. ☐ EM
☐ No Option

Internal battery pack provides 90 minutes of supplemental light at 23% of initial lamp lumens for 26, 32, or 42 watt compact fluorescent lamps.



Battery Back-up

Cold-Pack Emergency Battery Pack

Cat. No. ☐ EM-CP
☐ No Option

The EM-CP option is a temperature controlled ballast designed to maintain operation without interruption within a range of hi/low ambient temperatures, -20°C to +55°C.

Internal Cold-Pack emergency battery pack provides up to 90 minutes of supplemental light. See following table for max. lumens output by lamps.



cold-pack battery back-up

| Lamp (4-Pin) | 1 lamp lumens |
|--------------|---------------|
| 42W | 750 |
| 32W | 575 |
| 26W | 450 |

POLE TYPE
P2

CC/CCS17

17" Arm Mounted, Curvilinear, PicoEmitter™ LED

revision 12/19/13 • kl_cc17aeled_spec.pdf

Type:
Job:
Catalog number:

Approvals:

| Mtg. | Fixture | Electrical Module | Finish | Options |
|------|---------|-------------------|--------|---------------|
| | | | | See pages 3-4 |

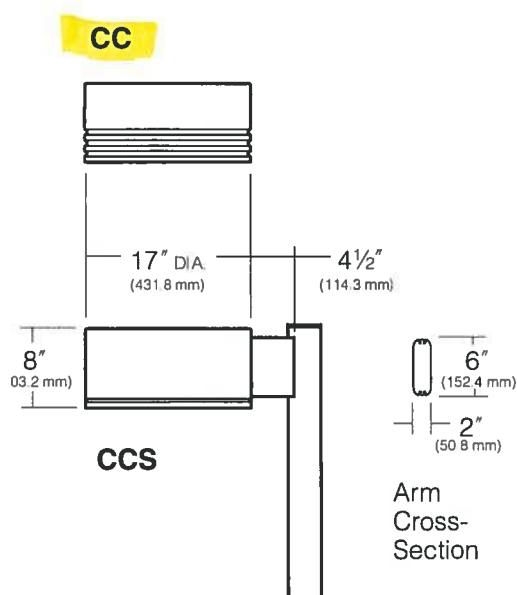
See page 2

Date:
Page: 1 of 6

Select pole from Kim Arms and Poles Selection Guide. If pole is provided by others indicate O.D. for arm fitting.

Specifications

17" Diameter
60 Light Emitting Diodes
Total System Watts = 64W



Housing: Spun aluminum. (Rollformed linear reveals; **CC:** Three equally spaced reveals, 1/2" wide, separated by 1/2" ribs, 1/4" deep. **CCS:** One 1/4" groove, 1/4" deep.) Sidewalls have a maximum 1° of taper, and are free of welds or fasteners. A rollformed aluminum flange is hemmed into the bottom providing support for the reflector module. An internal aluminum casting provides for mounting of the electrical module plus reinforcing for side-arm mounting of the fixture.

Lens Frame Assembly: One-piece cast aluminum lens frame is attached to the housing by a zinc plated cold rolled steel hinge with a stainless steel pin. Closure is by one self-retained stainless steel screw. A stainless steel self-locking stop arm is provided to hold the lens frame in the open position while servicing. A 3/16" thick clear flat tempered glass lens is fully gasketed by a one-piece extruded and vulcanized silicone gasket. Lens is retained in the frame by removable zinc plated steel clips.

Standard Arm Mounting: Arm is one-piece extruded aluminum with internal bolt guides and fully radiussed top and bottom. Luminaire-to-pole attachment is by internal draw bolts, and includes a pole reinforcing plate with wire strain relief. Arm is circular cut to mate with specified round pole.

Electronic Module: All electrical components are UL and CSA recognized, mounted on a single plate and factory prewired with quick-disconnect plugs. Module includes a driver, LifeShield™ temperature control device and surge protector. Electrical module attaches to housing with key hole slots, accessible by opening the lens frame and removing optical module. Driver is rated for -40°F starting and has a 0-10V dimming interface for multi-level illumination options.

Optical Module: Precision, replaceable PicoEmitters are positioned to achieve directional control toward desired task. The entire EmitterDeck™ mounting assembly fastens to the housing as a one-piece module.

Finish/Color: TGIC thermoset polyester powder coat paint, 2.5 mil nominal thickness. Standard colors are Black, Dark Bronze, Light Gray, Stealth Gray™, Platinum Silver, or White. Custom colors are available.

Listed To: UL 1598 Standard for Luminaires - UL 8750 Standard for Safety for Light Emitting Diode (LED) Equipment for use in Lighting Products and CSA C22.2#250.0 Luminaires.

Warranty: Kim Lighting warrants Curvilinear LED products ("Product(s)") sold by Kim Lighting to be free from defects in material and workmanship for (i) a period of five (5) years for metal parts, (ii) a period of ten (10) years for exterior housing paint finish(s), (iii) a period of six (6) years for LED Light Engines (PicoEmitter reflectors) and, (iv) a period of five (5) years for LED power components (LED Driver, LifeShield temperature control device, surge protector), from the date of sale of such goods to the buyer as specified in Kim Lighting shipment documents for each product.

CAUTION: Fixtures must be grounded in accordance with national, state and/or local electrical codes. Failure to do so may result in serious injury.



KIM LIGHTING RESERVES THE RIGHT TO CHANGE SPECIFICATIONS WITHOUT NOTICE.

**CC/CCS17**

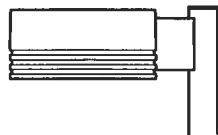
17" Arm Mounted, Curvilinear, PicoEmitter™ LED

revision 12/19/13 • kl_cc17aeled_spec.pdf

Type:

Job:

Page: 2 of 6

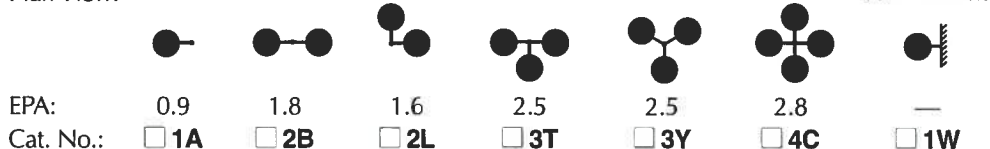


Standard Features

Mounting

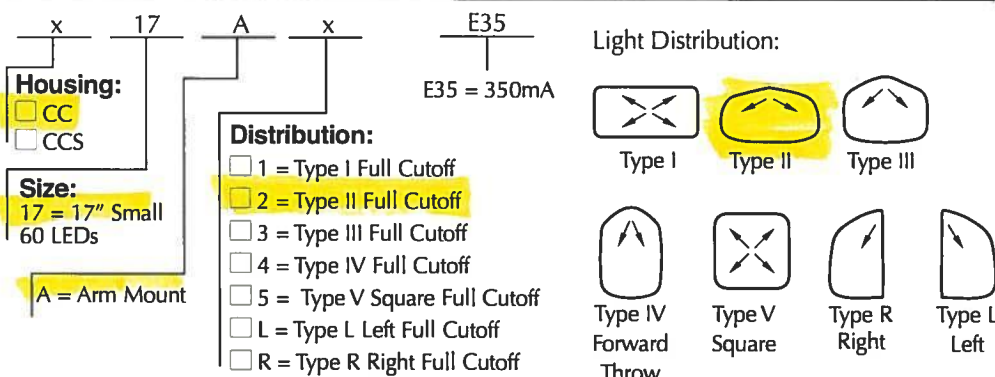
3Y configuration is available for round poles only.

Plan View:



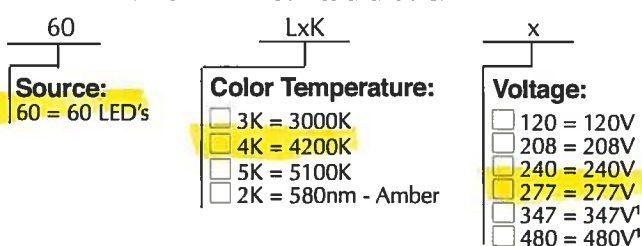
Fixture

Cat. No. designates **CC/CCS** fixture and light distribution.



Electrical Module

Cat. Nos. for Electrical Modules available:



¹Due to current unavailability of 347V and 480V drivers, specification of these voltages may feature an integral step-down transformer.

Finish

TGIC powder coat paint over a titanated zirconium conversion coating.

Color: Black Dark Bronze Light Gray Stealth Gray Platinum Silver White Custom Color²
Cat. No.: ☐ BL ☐ DB ☐ LG ☐ SG ☐ PS ☐ WH ☐ CC

²Custom colors subject to additional charges, minimum quantities and extended lead times. Consult representative. Custom color description: _____

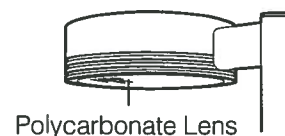
Optional Features

Polycarbonate Lens

Cat. No. ☐ L17F
☐ No Option

Clear UV stabilized polycarbonate replaces standard flat glass lens, gasketed and integral with lens frame.

CAUTION: Use only when vandalism is anticipated to be high. Useful life is limited by UV discoloration from sunlight.



**CC/CCS17**

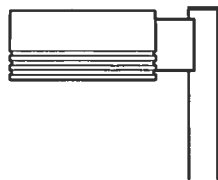
17" Arm Mounted, Curvilinear, PicoEmitter™ LED

revision 12/19/13 • kl_cc17aeled_spec.pdf

Type:

Job:

Page: 3 of 6



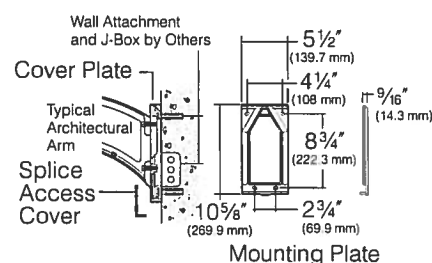
Optional Features

Wall Mounting

Cat. No. ☐ 1W
☐ No Option

Select from Mounting on page 2.

Wall Mount: A cast mounting plate of 356 alloy, low-copper (<0.6% Cu) aluminum, is mounted to the wall with bolts (by others). Fixture and arm are mounted to a cast 356 alloy aluminum cover plate before attaching to the wall mounting plate. The fixture-arm-cover plate assembly is hooked to the wall mounting plate, and secured with stainless steel screws provided. After mounting to the wall, field splices are made at the opening in the cover plate, then covered by a cast 356 alloy aluminum plate that blends with the cover plate design. Complete fixture-arm-cover plate assembly can therefore be mounted before field splices are made. Cover plate is finished to match arm and fixture powder coat color.



CAUTION: Structural integrity of mounting plate attachment to wall is by others.

Photocell Control

Cat. No. (See right)
☐ No Option

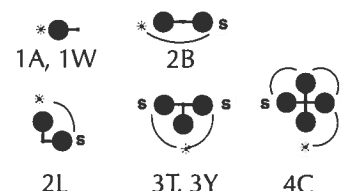
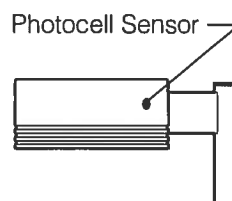
Factory installed photocell inside housing with a fully gasketed sensor on the side wall. For multiple fixture mountings, one fixture is supplied with a photocell to operate the others.

Mounting Configuration:

* – Fixture with Photocell Sensor
 S – slave unit(s)
 No fixture wattage limit.

Cat. No. Line Volts:

| | |
|-------------------------------|------|
| <input type="checkbox"/> A-30 | 120V |
| <input type="checkbox"/> A-31 | 208V |
| <input type="checkbox"/> A-32 | 240V |
| <input type="checkbox"/> A-33 | 277V |
| <input type="checkbox"/> A-35 | 347V |
| <input type="checkbox"/> A-34 | 480V |



Neighbor Friendly Optic:

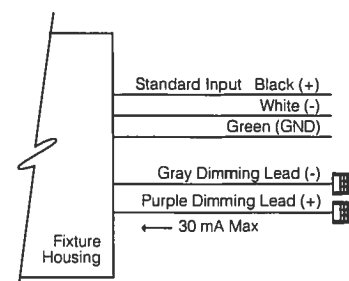
Cat. No. ☐ NFO
☐ No Option

Integrated Neighbor Friendly Optic on each PicoEmitter™ module to completely control unwanted backlight. Most effective with Type III and IV distributions.



0-10V Dimming Interface

Driver has a 0-10V dimming interface with a dimming range of 10-100%. Is compatible with most control systems including Hubbell Building Automation wiHUBB™. Approved dimmers include Lutron Diva AVTV, Lutron Nova NFTV and NTFTV. Note: Not compatible with current sourcing dimmers. Controls compatible via Gray and Purple dimming lead.



**CC/CCS17**

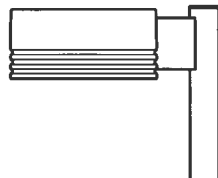
17" Arm Mounted, Curvilinear, PicoEmitter™ LED

revision 12/19/13 • kl_cc17aeled_spec.pdf

Type:

Job:

Page: 4 of 6



Optional Features

Outdoor Occupancy Sensor

Cat. No. (See right)
☐ No Option

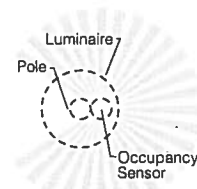
Side Pole Mount

Outdoor Occupancy Sensor with 0-10VDC dimming control mounts directly to the underside of the luminaire. Wide 360° pattern. Available in voltages to match luminaire from 120 through 480VAC. Module color available in Black, Gray, or White (Picked at the factory when luminaire color is chosen, black used for dark colors). Field Adjustable Timeout settings for 5, 10, 15, and 30 minutes (Factory default is 5-minutes). Field adjustable unoccupied dimming level, 20%, 50%, 60%, or 70% (Factory default is 50%). One sensor can support multiple units up to 1500 watts. (Wiring from module to luminaire(s) is by-others). Mounted to a cast pole adapter painted to match pole.

Cat. No.

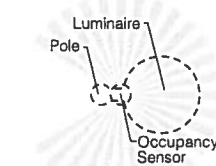
- ☐ **SCL-R*/**/**** – Pole Occupancy Sensor up to 16', UNV (120-347V) or 480V. Specify pole diameter.
- ☐ **SCL-S/**/**** – Pole Occupancy Sensor up to 16', UNV (120-347V) or 480V. Square pole mount.
- ☐ **SCH-R*/**/**** – Pole Occupancy Sensor up to 30', UNV (120-347V) or 480V. Specify pole diameter.
- ☐ **SCH-S/**/**** – Pole Occupancy Sensor up to 30', UNV (120-347V) or 480V. Square pole mount.

* Pole Diameter, ** Voltage, *** Color

Ordering Example: SCL-R4/277/BL

Side Pole Mount
Detection Pattern
Top View for Round Luminaire
Mounted on Post Top

NOTE: Occupancy detection is blocked directly behind pole. Install occupancy sensor as far away from pole as possible to maximize detection.



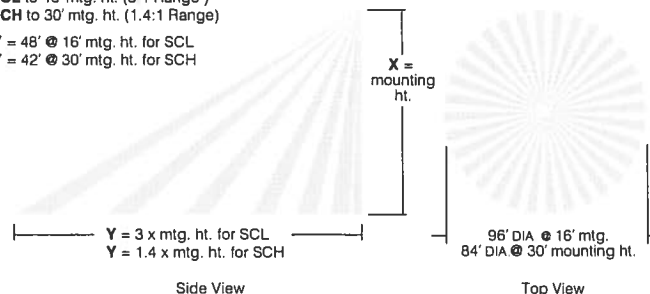
Side Pole Mount
Detection Pattern
Top View for Round Luminaire
Mounted on Arm

NOTE: For 360° coverage, install two occupancy sensors 180° apart on pole

Sensor Lens Coverage and Detection Patterns

SCL to 16' mtg. ht. (3:1 Range)
SCH to 30' mtg. ht. (1.4:1 Range)

Y = 48' @ 16' mtg. ht. for SCL
 Y = 42' @ 30' mtg. ht. for SCH



**CC/CCS17**

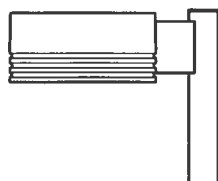
17" Arm Mounted, Curvilinear, PicoEmitter™ LED

revision 12/19/13 • kl_cc17aeled_spec.pdf

Type:

Job:

Page: 5 of 6



Optional Features

Accent Reveals

Cat. No. (See right)

☐ No Option

(For CC series only) Three aluminum bands riveted inside the housing reveals. Available in five standard Kim powder coat finishes. Custom colors available.



Accent Reveals

Color: Black **Dark Bronze** Light Gray Stealth Gray™ Platinum Silver White Custom Colors¹

Cat. No.: ☐ BL-REV ☒ DB-REV ☐ LG-REV ☐ SG-REV ☐ PS-REV ☐ WH-REV ☐ CC-REV

¹Custom colors subject to additional charges, minimum quantities and extended lead times. Consult representative. Custom color description: _____

Vertical Slipfitter Mounts

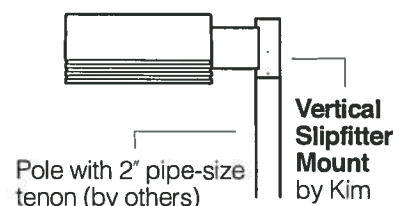
Cat. No. includes Mounting.

Cat. No. (See right)

☐ No Option

Allows fixture with standard support arm to be mounted to steel poles having a 2" pipe-size steel tenon (2 3/8" O.D. x 4 1/2" min. length). 4" round or square cast aluminum with flush cap, secured by four 3/8" stainless steel set point allen screws. Pole tenon must be field drilled at one set screw location to insure against fixture rotation. Finished to match fixture.

NOTE: 3Y only available on round slipfitter.



Pole with 2" pipe-size tenon (by others)

Vertical Slipfitter Mount by Kim

Cat. No.

- ☐ VSF-1A
☐ VSF-2B
☐ VSF-2L
☐ VSF-3T
☐ VSF-3Y
☐ VSF-4C



Round

Stainless steel set screws



Square

Cat. No.

- ☐ SVSF-1A
☐ SVSF-2B
☐ SVSF-2L
☐ SVSF-3T
☐ SVSF-4C

Mounting Configuration

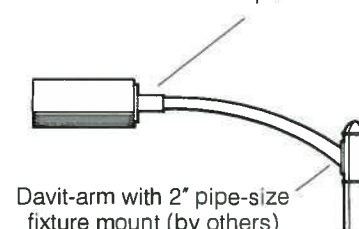
- 1A - single arm mount
 2B - 2 at 180°
 2L - 2 at 90°
 3T - 3 at 90°
 3Y - 3 at 120°
 4C - 4 at 90°

Horizontal Slipfitter Mount

Cat. No. ☐ HSF☐ No Option

Replaces standard mounting arm with a slipfitter which allows CC/CCS Arm Mount model to be mounted to a horizontal pole davit-arm with 2" pipe-size mounting end (2 3/8" O.D.). Cast aluminum slipfitter with set screw anti-rotation lock. Bolts to housing from inside the electrical compartment using mounting holes for the standard support arm. Davit-arm must be field drilled at a set screw location to insure against fixture rotation. Finished to match fixture and arm.

Horizontal Slipfitter Mount



Davit-arm with 2" pipe-size fixture mount (by others)

Support Arm

Cat. No. (See right)

☐ No Option

Note: Refer to Kim Lighting's Arms & Poles Selection Guide for complete details.

Arm View:



Swept Solid Arm



Swept Hollow Arm



Upsweep Solid Arm



Upsweep Hollow Arm



Uplift Adjustable Aluminum Arm



Uplift Adjustable Stainless Steel Arm

Cat. No.: ☐ AA01 ☐ AA03 ☐ AA05 ☐ AA07 ☐ AA09 ☐ AA11



CC/CCS17

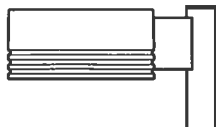
17" Arm Mounted, Curvilinear, PicoEmitter™ LED

revision 12/19/13 • kl_cc17aeled_spec.pdf

Type:

Job:

Page: 6 of 6



Lumen Data

| Spectroradiometric | | | |
|--------------------------------|---------------|---------------|---------------|
| | 3000K Average | 4200K Average | 5100K Average |
| Correlated Color Temp. CCT (K) | 2800K-3175K | 3800K-4600K | 4600K-5600K |
| Color Rendering Index (CRI) | ≤80 | ≤80 | ≤70 |
| Power Factor | >.90 | >.90 | >.90 |

| Projected Lumen Maintenance | | |
|-----------------------------|-------------|------------------|
| mA | 100,000 hrs | (Calculated L70) |
| 350 | 93.22% | 584,00 hrs. |

| Electrical Drive Current | | |
|--------------------------|-----------|--------------|
| Volts - AC | Amps - AC | System Watts |
| 120 | 0.56 | 67 |
| 208 | 0.32 | 67 |
| 240 | 0.28 | 67 |
| 277 | 0.24 | 67 |
| 347 | 0.19 | 67 |
| 480 | 0.14 | 67 |

| B.U.G. Rating (TM15) in Lumens wher B = Backlight, U = Uplight, G = Glare | | | | | | | | |
|---|----------|----------|----------|------------|----------|------------|----------|----------|
| Temperature | TYPE 1 | TYPE 2 | TYPE 3 | TYPE 3 NFO | TYPE 4 | TYPE 4 NFO | TYPE 5 | TYPE L/R |
| 3000K | B2 U0 G2 | B1 U0 G1 | B1 U0 G1 | B1 U0 G1 | B1 U0 G1 | B0 U0 G1 | B2 U0 G1 | TBD |
| 4200K | B3 U0 G3 | B2 U0 G2 | B1 U0 G1 | B1 U0 G1 | B1 U0 G2 | B1 U0 G1 | B3 U0 G1 | TBD |
| 5100K | B3 U0 G3 | B2 U0 G2 | B1 U0 G1 | B1 U0 G1 | B1 U0 G2 | B1 U0 G1 | B3 U0 G1 | TBD |

| Absolute Lumens | | | | | | | | |
|-----------------|--------|--------|--------|------------|--------|------------|--------|----------|
| Temperature | TYPE 1 | TYPE 2 | TYPE 3 | TYPE 3 NFO | TYPE 4 | TYPE 4 NFO | TYPE 5 | TYPE L/R |
| 3000K | 3861 | 3959 | 3931 | 3248 | 3912 | 3294 | 3971 | TBD |
| 4200K | 5062 | 5190 | 4972 | 4258 | 5129 | 4319 | 5206 | TBD |
| 5100K | 5426 | 5564 | 5524 | 4564 | 5581 | 4626 | 5576 | TBD |

LED performance and lumen output continues to improve at a rapid pace. Log onto www.kimlighting.com to download the most current photometric files from Kim Lighting's IES File Library. For custom optics and color temperature configurations, contact factory.

POLE TYPE
P1

CC/CCS21

21" Arm Mounted, Curvilinear, PicoEmitter™ LED

revision 12/19/13 • kim_cc21aeled_spec.pdf

Type:
Job:
Catalog number:

Approvals:

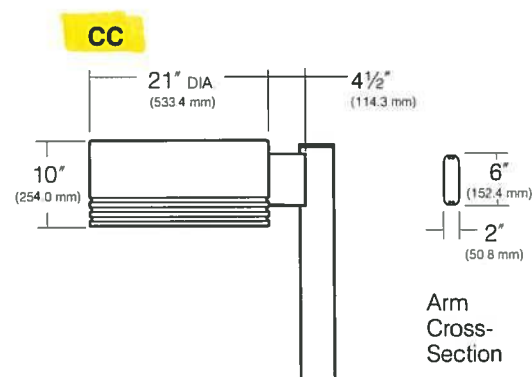
Mtg. / Fixture / Electrical Module / Finish / Options
 See page 2 See page 2 See pages 3-4

Date:
Page: 1 of 6

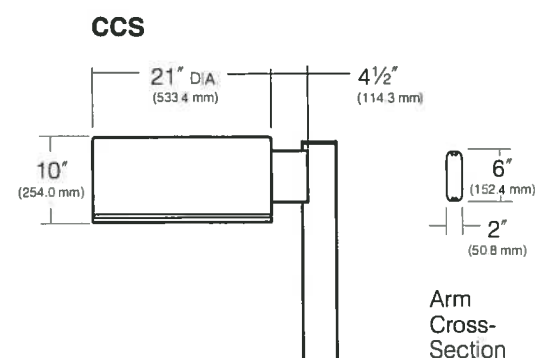
Select pole from Kim Arms and Poles Selection Guide. If pole is provided by others indicate O.D. for arm fitting.

Specifications

21" Diameter
120 Light Emitting Diodes
Total Max System Watts = 130W



Arm
Cross-
Section



Arm
Cross-
Section

Housing: Spun aluminum. (Rollformed linear reveals; **CC:** Three equally spaced reveals, 1/2" wide, separated by 1/2" ribs, 1/4" deep. **CCS:** One 1/4" groove, 1/4" deep.) Sidewalls have a maximum 1° of taper, and are free of welds or fasteners. A rollformed aluminum flange is hemmed into the bottom providing support for the reflector module. An internal aluminum casting provides for mounting of the electrical module plus reinforcing for side-arm mounting of the fixture.

Lens Frame Assembly: One-piece cast aluminum lens frame is attached to the housing by a zinc plated cold rolled steel hinge with a stainless steel pin. Closure is by three self-retained stainless steel screws. A stainless steel self-locking stop arm is provided to hold the lens frame in the open position while servicing. A 3/16" thick clear flat tempered glass lens is fully gasketed by a one-piece extruded and vulcanized silicone gasket. Lens is retained in the frame by removable zinc plated steel clips.

Standard Arm Mounting: Arm is one-piece extruded aluminum with internal bolt guides and fully radiussed top and bottom. Luminaire-to-pole attachment is by internal draw bolts, and includes a pole reinforcing plate with wire strain relief. Arm is circular cut to mate with specified round pole.

Electronic Module: All electrical components are UL and CSA recognized, mounted on a single plate and factory prewired with quick-disconnect plugs. Module includes a driver, LifeShield™ temperature control device and surge protector. Electrical module attaches to housing with key hole slots, accessible by opening the lens frame and removing optical module. Driver is rated for -40°F starting and has a 0-10V dimming interface for multi-level illumination options.

Optical Module: Precision, replaceable PicoEmitter reflectors are positioned to achieve directional control toward desired task. The entire EmitterDeck® mounting assembly fastens to the housing as a one-piece module.

Finish/Color: TGIC thermoset polyester powder coat paint, 2.5 mil nominal thickness. Standard colors are Black, Dark Bronze, Light Gray, Stealth Gray™, Platinum Silver, or White. Custom colors are available.

Listed To: UL 1598 Standard for Luminaires - UL 8750 Standard for Safety for Light Emitting Diode (LED) Equipment for use in Lighting Products and CSA C22.2#250.0 Luminaires.

Warranty: Kim Lighting warrants Curvilinear LED products ("Product(s)") sold by Kim Lighting to be free from defects in material and workmanship for (i) a period of five (5) years for metal parts, (ii) a period of ten (10) years for exterior housing paint finish(s), (iii) a period of six (6) years for LED Light Engines (PicoEmitters) and, (iv) a period of five (5) years for LED power components (LED Driver, LifeShield® temperature control device, surge protector), from the date of sale of such goods to the buyer as specified in Kim Lighting shipment documents for each product.

CAUTION: Fixtures must be grounded in accordance with national, state and/or local electrical codes. Failure to do so may result in serious personal injury.



HUBBELL LIGHTING, INC.

KIM LIGHTING RESERVES THE RIGHT TO CHANGE SPECIFICATIONS WITHOUT NOTICE.

**CC/CCS21**

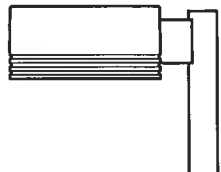
21" Arm Mounted, Curvilinear, PicoEmitter™ LED

revision 12/19/13 • kim_cc21aeled_spec.pdf

Type:

Job:

Page: 2 of 6

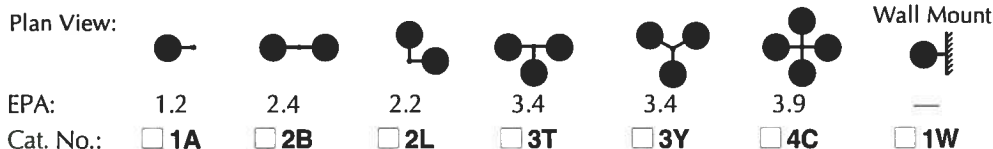


Standard Features

Mounting

3Y configuration is available for round poles only.

Plan View:



EPA:

1.2

2.4

2.2

3.4

3.4

3.9

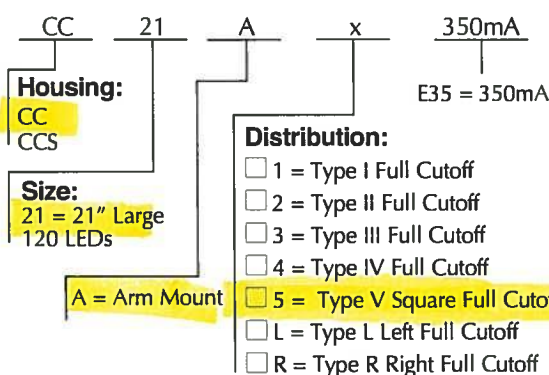
—

Cat. No.:

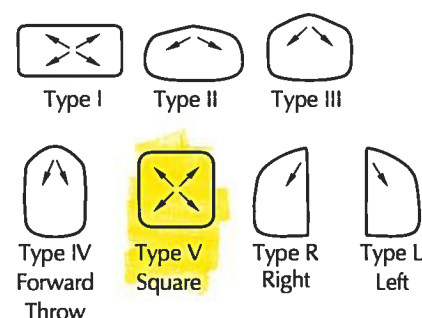
☐ 1A☐ 2B☐ 2L☐ 3T☐ 3Y☐ 4C☐ 1W

Fixture

Cat. No. designates **CC/CCS** fixture and light distribution.

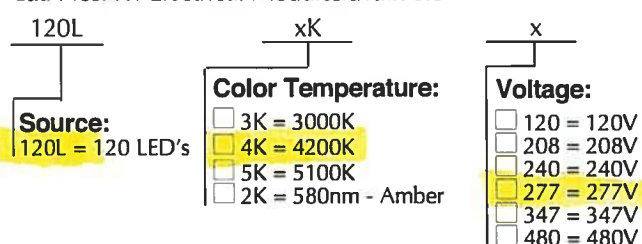


Light Distribution:



Electrical Module

Cat. Nos. for Electrical Modules available:



Finish

TGIC powder coat

Color: Black Dark Bronze Light Gray Stealth Gray Platinum Silver White Custom Color¹

Cat. No.: ☐ BL ☒ DB ☐ LG ☐ SG ☐ PS ☐ WH ☐ CC

¹Custom colors subject to additional charges, minimum quantities and extended lead times. Consult representative. Custom color description:

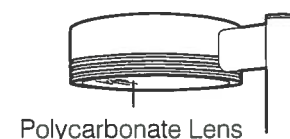
Optional Features

Polycarbonate Lens

Cat. No. ☐ L21F
☐ No Option

Clear UV stabilized polycarbonate replaces standard flat glass lens, gasketed and integral with lens frame.

CAUTION: Use only when vandalism is anticipated to be high. Useful life is limited by UV discoloration from sunlight.



**CC/CCS21**

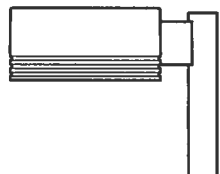
21" Arm Mounted, Curvilinear, PicoEmitter™ LED

revision 12/19/13 • kim_cc21aeled_spec.pdf

Type:

Job:

Page: 3 of 6



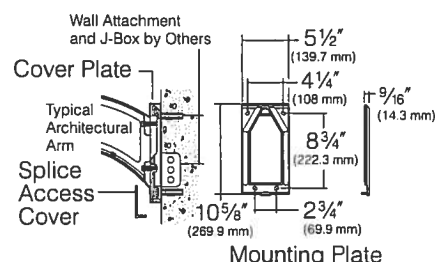
Optional Features

Wall Mounting

Cat. No. ☐ 1W☐ No Option

Select from Mounting on page 2.

Wall Mount: A cast mounting plate of 356 alloy, low-copper (<0.6% Cu) aluminum, is mounted to the wall with bolts (by others). Fixture and arm are mounted to a cast 356 alloy aluminum cover plate before attaching to the wall mounting plate. The fixture-arm-cover plate assembly is hooked to the wall mounting plate, and secured with stainless steel screws provided. After mounting to the wall, field splices are made at the opening in the cover plate, then covered by a cast 356 alloy aluminum plate that blends with the cover plate design. Complete fixture-arm-cover plate assembly can therefore be mounted before field splices are made. Cover plate is finished to match arm and fixture powder coat color.



CAUTION: Structural integrity of mounting plate attachment to wall is by others.

Photocell

Cat. No. (See right)

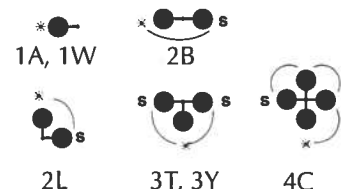
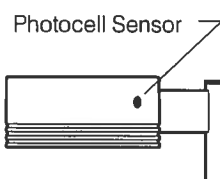
☐ No Option

Factory installed photocell inside housing with a fully gasketed sensor on the side wall. For multiple fixture mountings, one fixture is supplied with a photocell to operate the others. (Exception: Four 400 watt fixtures where two fixtures will have photocells.)

Mounting Configuration:

* – Fixture with Photocell Sensor
S – slave unit(s)
No fixture wattage limit.

| Cat. No. | Line Volts |
|--|------------|
| <input type="checkbox"/> A-30 <input type="checkbox"/> 2A-30 | 120V |
| <input type="checkbox"/> A-31 <input type="checkbox"/> 2A-31 | 208V |
| <input type="checkbox"/> A-32 <input type="checkbox"/> 2A-32 | 240V |
| <input type="checkbox"/> A-33 <input type="checkbox"/> 2A-33 | 277V |
| <input type="checkbox"/> A-35 <input type="checkbox"/> 2A-35 | 347V |
| <input type="checkbox"/> A-34 <input type="checkbox"/> 2A-34 | 480V |



Neighbor Friendly Optic:

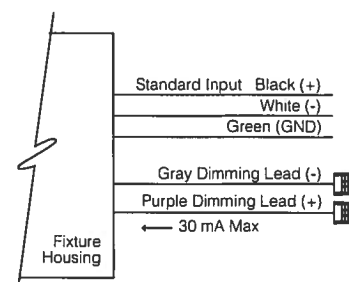
Cat. No. ☐ NFO☐ No Option

Integrated Neighbor Friendly Optic on each PicoEmitter™ module to completely control unwanted backlight. Most effective with Type III and IV distributions.



0-10V Dimming Interface

Driver has a 0-10V dimming interface with a dimming range of 10-100%. Is compatible with most control systems including Hubbell Building Automation wiHUBB™. Approved dimmers include Lutron Diva AVTV, Lutron Nova NFTV and NTFTV. Note: Not compatible with current sourcing dimmers. Controls compatible via Gray and Purple dimming lead.



**CC/CCS21**

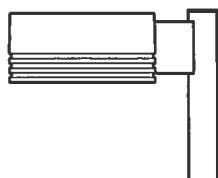
21" Arm Mounted, Curvilinear, PicoEmitter™ LED

revision 12/19/13 • kim_cc21aeled_spec.pdf

Type:

Job:

Page: 4 of 6



Optional Features

Outdoor Occupancy Sensor

Cat. No. (See right)
☐ No Option

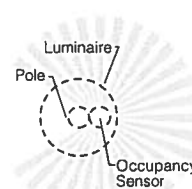
Side Pole Mount

Outdoor Occupancy Sensor with 0-10VDC dimming control mounts directly to the underside of the luminaire. Wide 360° pattern. Available in voltages to match luminaire from 120 through 480VAC. Module color available in Black, Gray, or White (Picked at the factory when luminaire color is chosen, black used for dark colors). Field Adjustable Timeout settings for 5, 10, 15, and 30 minutes (Factory default is 5-minutes). Field adjustable unoccupied dimming level, 20%, 50%, 60%, or 70% (Factory default is 50%). One sensor can support multiple units up to 1500 watts. (Wiring from module to luminaire(s) is by-others). Mounted to a cast pole adapter painted to match pole.

Cat. No.

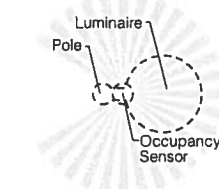
- ☐ **SCL-R*/**/**** – Pole Occupancy Sensor up to 16', UNV (120-347V) or 480V. Specify pole diameter.
- ☐ **SCL-S*/**/**** – Pole Occupancy Sensor up to 16', UNV (120-347V) or 480V. Square pole mount.
- ☐ **SCH-R*/**/**** – Pole Occupancy Sensor up to 30', UNV (120-347V) or 480V. Specify pole diameter.
- ☐ **SCH-S*/**/**** – Pole Occupancy Sensor up to 30', UNV (120-347V) or 480V. Square pole mount.

* Pole Diameter, ** Voltage, *** Color

Ordering Example: SCL-R4/277/BL

Side Pole Mount
Detection Pattern
Top View for Round Luminaire
Mounted on Post Top

NOTE: Occupancy detection is blocked directly behind pole. Install occupancy sensor as far away from pole as possible to maximize detection.



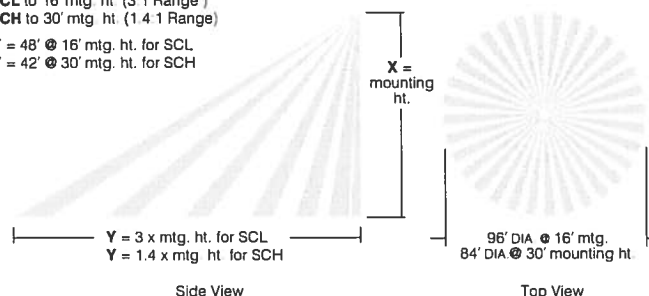
Side Pole Mount
Detection Pattern
Top View for Round Luminaire
Mounted on Arm

NOTE: For 360° coverage, install two occupancy sensors 180° apart on pole

Sensor Lens Coverage and Detection Patterns

SCL to 16' mtg. ht. (3.1 Range)
SCH to 30' mtg. ht. (1.4.1 Range)

Y = 48' @ 16' mtg. ht. for SCL
 Y = 42' @ 30' mtg. ht. for SCH



**CC/CCS21**

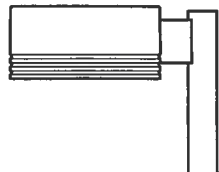
21" Arm Mounted, Curvilinear, PicoEmitter™ LED

revision 12/19/13 • kim_cc21aeled_spec.pdf

Type:

Job:

Page: 5 of 6



Optional Features

Accent Reveals

Cat. No. (See right)

☐ No Option

(For CC series only) Three aluminum bands riveted inside the housing reveals. Available in five standard Kim powder coat finishes. Custom colors available.



Accent Reveals

Color: Black **Dark Bronze** Light Gray Stealth Gray Platinum Silver White Custom Colors¹
 Cat. No.: ☐ BL-REV ☒ DB-REV ☐ LG-REV ☐ SG-REV ☐ PS-REV ☐ WH-REV ☐ CC-REV

¹Custom colors subject to additional charges, minimum quantities and extended lead times. Consult representative. Custom color description: _____

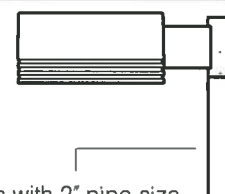
Vertical Slipfitter Mounts

Cat. No. (See right)

☐ No Option

Allows fixture with standard support arm to be mounted to steel poles having a 2" pipe-size steel tenon (2 3/8" O.D. x 4 1/2" min. length). 4" round or square cast aluminum with flush cap, secured by four 3/8" stainless steel set point allen screws. Pole tenon must be field drilled at one set screw location to insure against fixture rotation. Finished to match fixture.

NOTE: 3Y only available on round slipfitter.



Pole with 2" pipe-size tenon (by others)

Vertical Slipfitter Mount by Kim

Cat. No.

- ☐ VSF-1A
☐ VSF-2B
☐ VSF-2L
☐ VSF-3T
☐ VSF-3Y
☐ VSF-4C



Round

Stainless steel set screws



Square

Cat. No.

- ☐ SVSF-1A
☐ SVSF-2B
☐ SVSF-2L
☐ SVSF-3T
☐ SVSF-4C

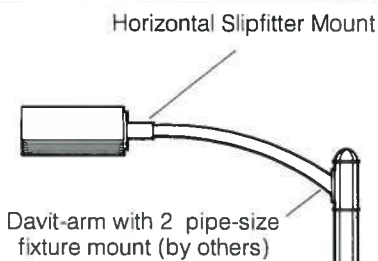
Mounting Configuration

- 1A - single arm mount
 2B - 2 at 180°
 2L - 2 at 90°
 3T - 3 at 90°
 3Y - 3 at 120°
 4C - 4 at 90°

Horizontal Slipfitter Mount

Cat. No. ☐ HSF☐ No Option

Replaces standard mounting arm with a slipfitter which allows **CC/CCS** Arm Mount model to be mounted to a horizontal pole davit-arm with 2" pipe-size mounting end (2 3/8" O.D.). Cast aluminum slipfitter with set screw anti-rotation lock. Bolts to housing from inside the electrical compartment using mounting holes for the standard support arm. Davit-arm must be field drilled at a set screw location to insure against fixture rotation. Finished to match fixture and arm.



Horizontal Slipfitter Mount

Davit-arm with 2 pipe-size fixture mount (by others)

Support Arm

Cat. No. (See right)

☐ No Option

Note: Refer to Kim Lighting's Architectural Arms Catalog for complete details.

Arm View:



Swept Solid Arm



Swept Hollow Arm



Upsweep Solid Arm



Upsweep Hollow Arm



Uplift Adjustable Aluminum Arm



Uplift Adjustable Stainless Steel Arm

Cat. No.: ☐ AA01☐ AA03☐ AA05☐ AA07☐ AA09☐ AA11



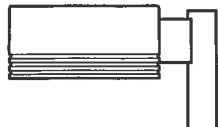
CC/CCS21

21" Arm Mounted, Curvilinear, PicoEmitter™ LED
revision 12/19/13 • kim_cc21aled_spec.pdf

Type:

Job:

Page: 6 of 6



Lumen Data

| Spectroradiometric | | | |
|--------------------------------|---------------|---------------|---------------|
| | 3000K Average | 4200K Average | 5100K Average |
| Correlated Color Temp. CCT (K) | 2800K-3175K | 3800K-4600K | 4600K-5600K |
| Color Rendering Index (CRI) | ≤80 | ≤80 | ≤70 |
| Power Factor | >.90 | >.90 | >.90 |

| Projected Lumen Maintenance* | | |
|------------------------------|-------------|------------------|
| mA | 100,000 hrs | (Calculated L70) |
| 350 | 93.92% | 669,000 hrs. |

*Still awaiting independent third party verification

| Electrical Drive Current | | |
|--------------------------|-----------|--------------|
| Volts - AC | Amps - AC | System Watts |
| 120 | 1.05 | 126 |
| 208 | 0.61 | 126 |
| 240 | 0.53 | 126 |
| 277 | 0.45 | 126 |
| 347 | 0.36 | 126 |
| 480 | 0.26 | 126 |

| B.U.G. Rating (TM15) in Lumens wher B = Backlight, U = Uplight, G = Glare | | | | | | | | |
|---|--------|----------|----------|------------|----------|------------|----------|----------|
| Temperature | TYPE 1 | TYPE 2 | TYPE 3 | TYPE 3 NFO | TYPE 4 | TYPE 4 NFO | TYPE 5 | TYPE L/R |
| 3000K | TBD | B2 U0 G2 | B2 U0 G2 | B1 U0 G2 | B1 U0 G2 | B1 U0 G2 | B3 U0 G1 | TBD |
| 4200K | TBD | B3 U0 G3 | B2 U0 G2 | B2 U0 G2 | B1 U0 G2 | B1 U0 G2 | B3 U0 G2 | TBD |
| 5100K | TBD | B3 U0 G3 | B2 U0 G2 | B2 U0 G2 | B1 U0 G2 | B1 U0 G2 | B3 U0 G2 | TBD |

| Absolute Lumens | | | | | | | | |
|-----------------|--------|--------|--------|------------|--------|------------|--------|----------|
| Temperature | TYPE 1 | TYPE 2 | TYPE 3 | TYPE 3 NFO | TYPE 4 | TYPE 4 NFO | TYPE 5 | TYPE L/R |
| 3000K | TBD | 8280 | 8097 | 6638 | 8074 | 6752 | 8541 | TBD |
| 4200K | TBD | 10530 | 10297 | 8440 | 10268 | 8586 | 10862 | TBD |
| 5100K | TBD | 11434 | 11181 | 9164 | 11149 | 9323 | 11794 | TBD |

LED performance and lumen output continues to improve at a rapid pace. Log onto www.kimlighting.com to download the most current photometric files from Kim Lighting's IES File Library. For custom optics and color temperature configurations, contact factory.