



C LOOKING NORTH ALONG WEST PROPERTY LINE



D LOOKING SOUTH TOWARDS BUILDING SITE



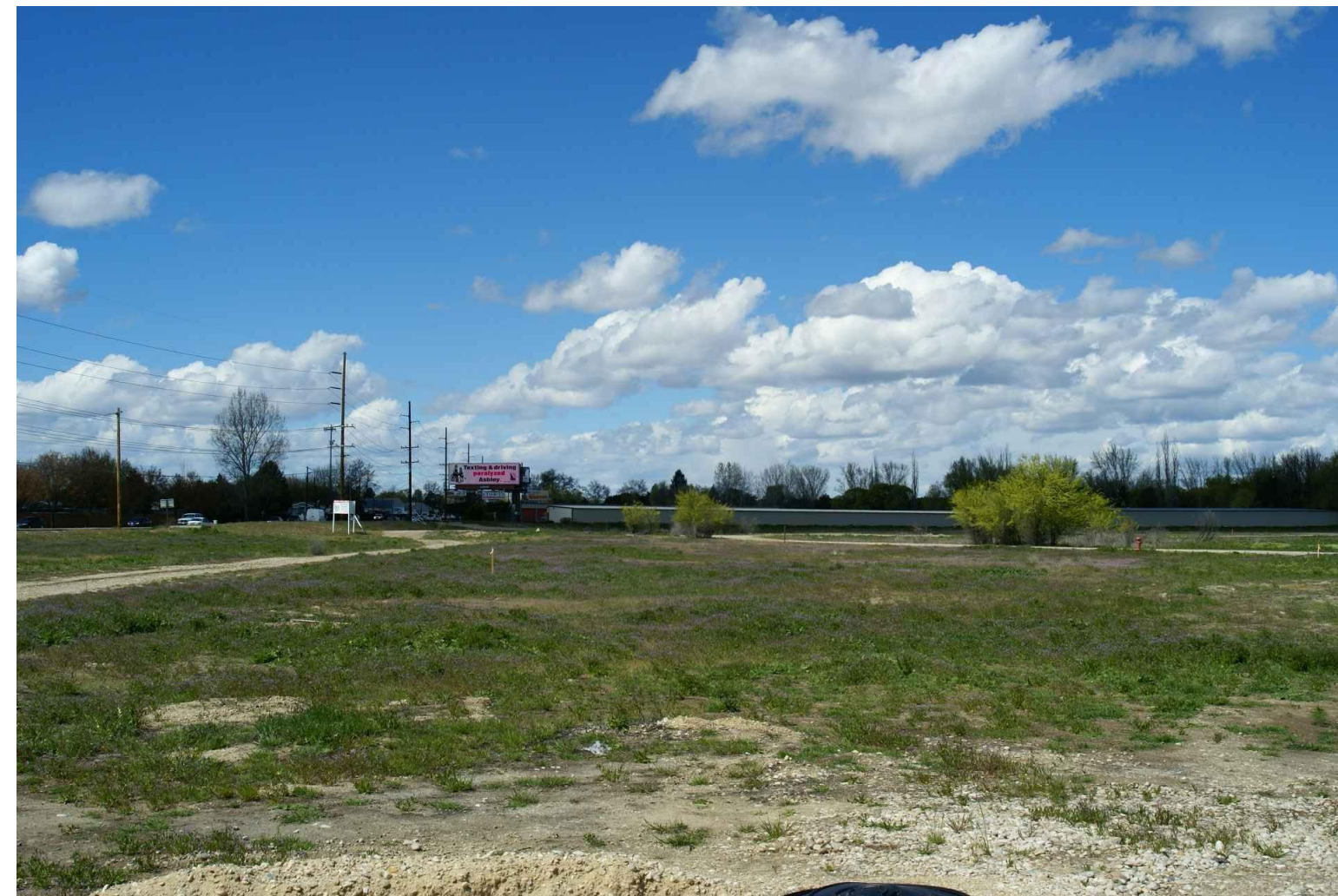
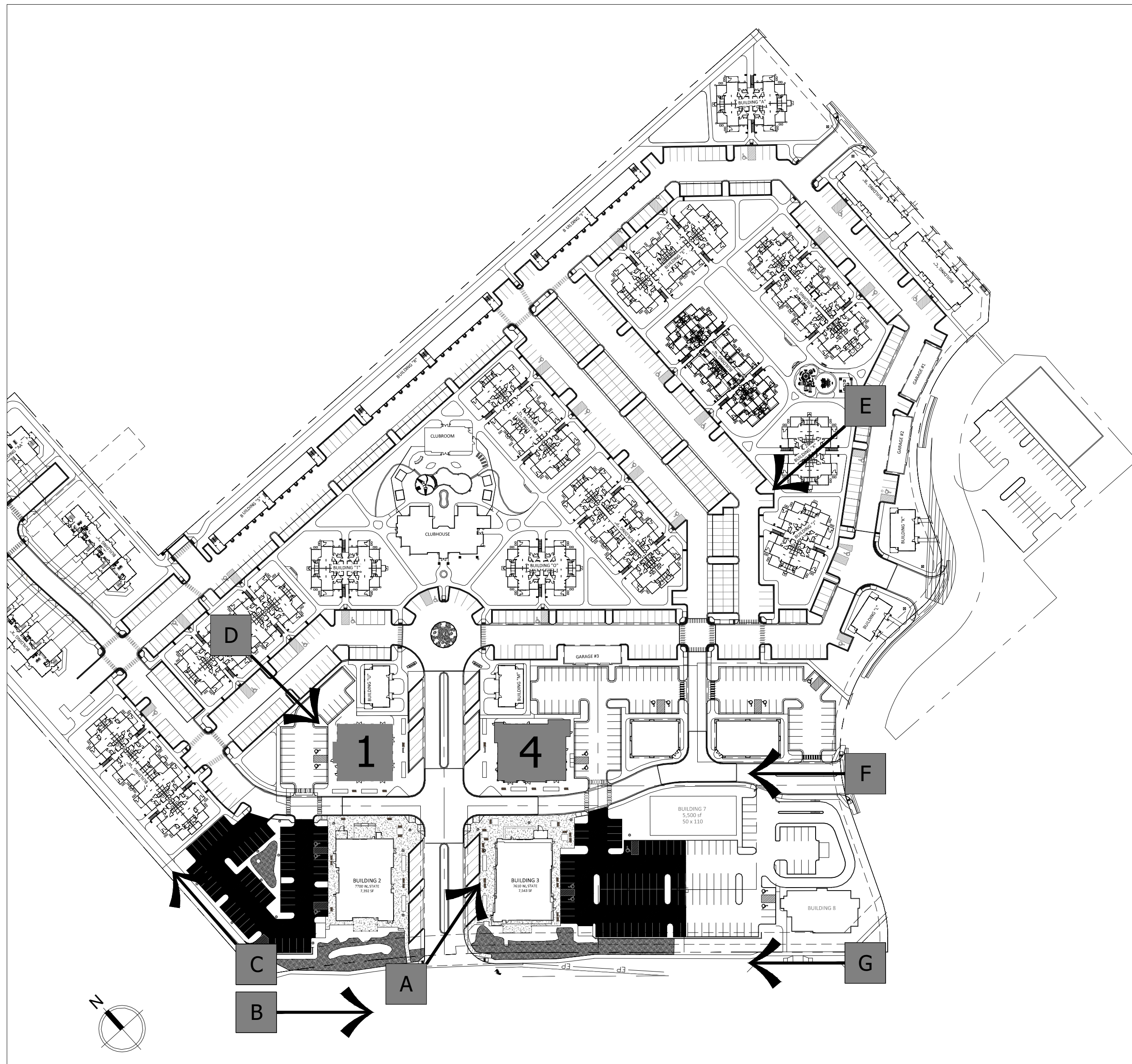
E LOOKING WEST TOWARDS BUILDING SITE



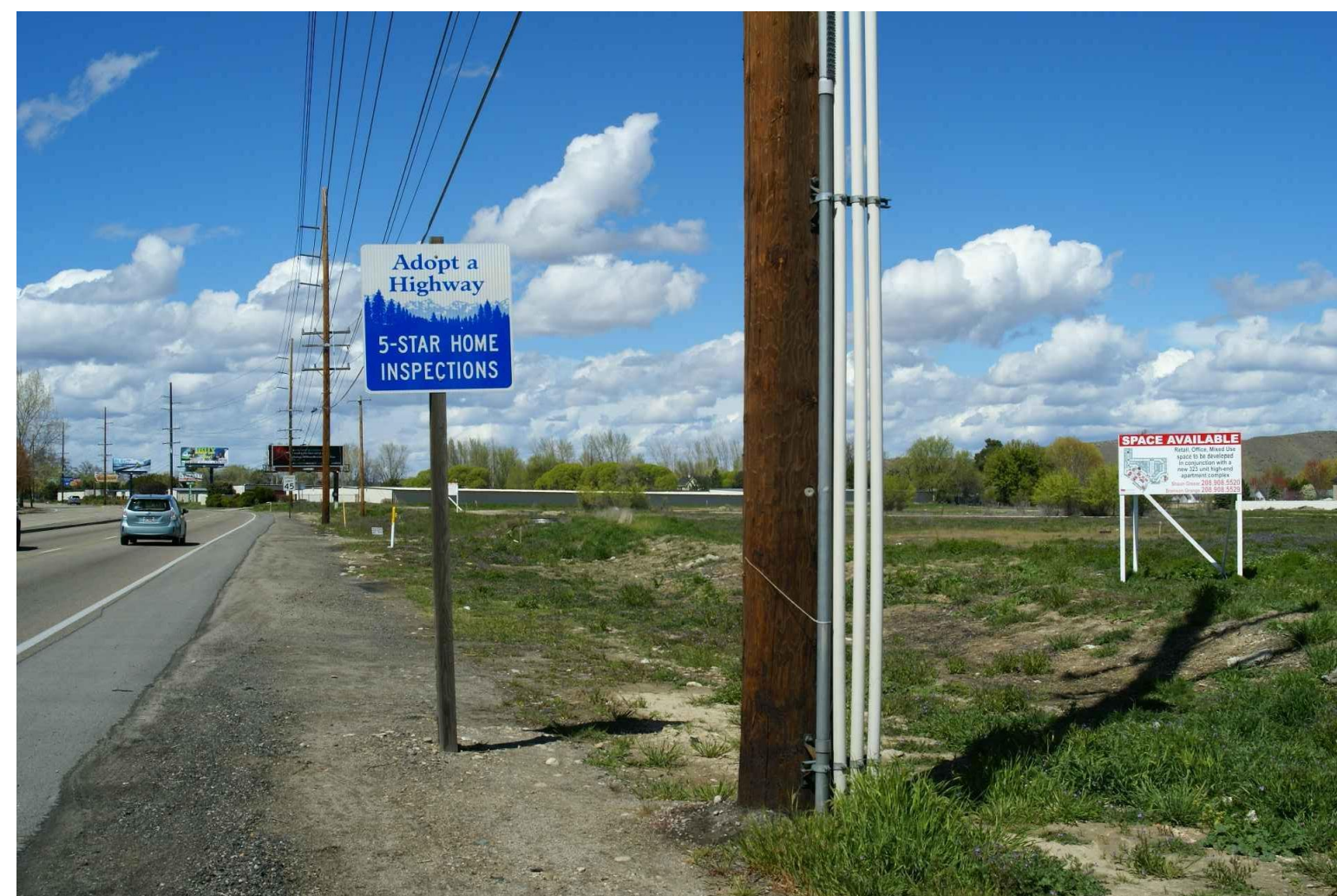
B LOOKING SOUTHEAST DOWN STATE STREET



A LOOKING EAST FROM STATE STREET / HWY 44



F LOOKING NORTHWEST FROM SAXTON DRIVE



G LOOKING NORTHWEST FROM STATE STREET

CITY APPROVAL

1010 S. ALLANTE PL.  
SUITE 100  
BOISE, IDAHO 83709  
(208) 336-8370  
FAX (208) 336-8380



PROPOSED DEVELOPMENT FOR:  
**NORTH POINTE RETAIL**  
BUILDINGS 1 + 4  
W. STATE STREET  
BOISE, IDAHO 83714

DRAWN	RR
DATE	05-11-2015
CHECKED	TK
JOB NO.	15028
SHEET	BC.1





R3 RENDERING: LOOKING EAST TOWARDS THE BOULEVARD



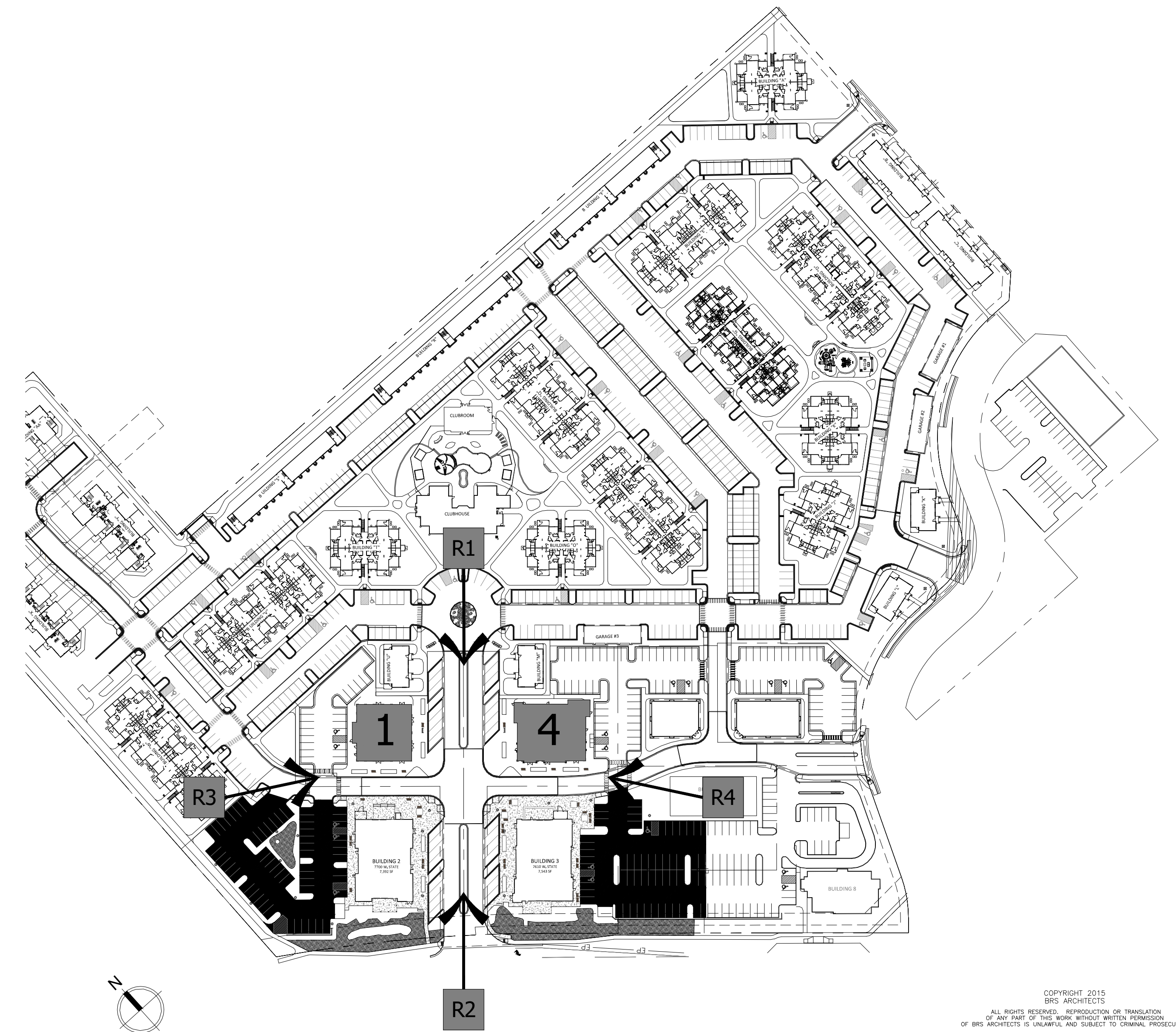
R4 RENDERING: LOOKING WEST TOWARDS THE BOULEVARD



R2 RENDERING: LOOKING UP BOULEVARD FROM STATE STREET



R1 RENDERING: LOOKING DOWN BOULEVARD TOWARD STATE STREET



CITY APPROVAL	

NO.	REVISIONS	DATE

1010 S. ALLANTE PL.  
SUITE 100  
BOISE, IDAHO 83709  
(208) 336-8370  
FAX (208) 336-8380

**BRS**  
ARCHITECTS

PROPOSED DEVELOPMENT FOR:

**NORTH POINTE RETAIL**

BUILDINGS 1 + 4

W. STATE STREET

BOISE, IDAHO 83714

DRAWN	RR
DATE	05-11-2015
CHECKED	TK
JOB NO.	15028
SHEET	BC.2