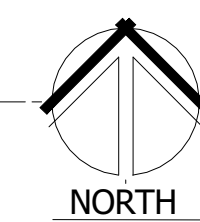
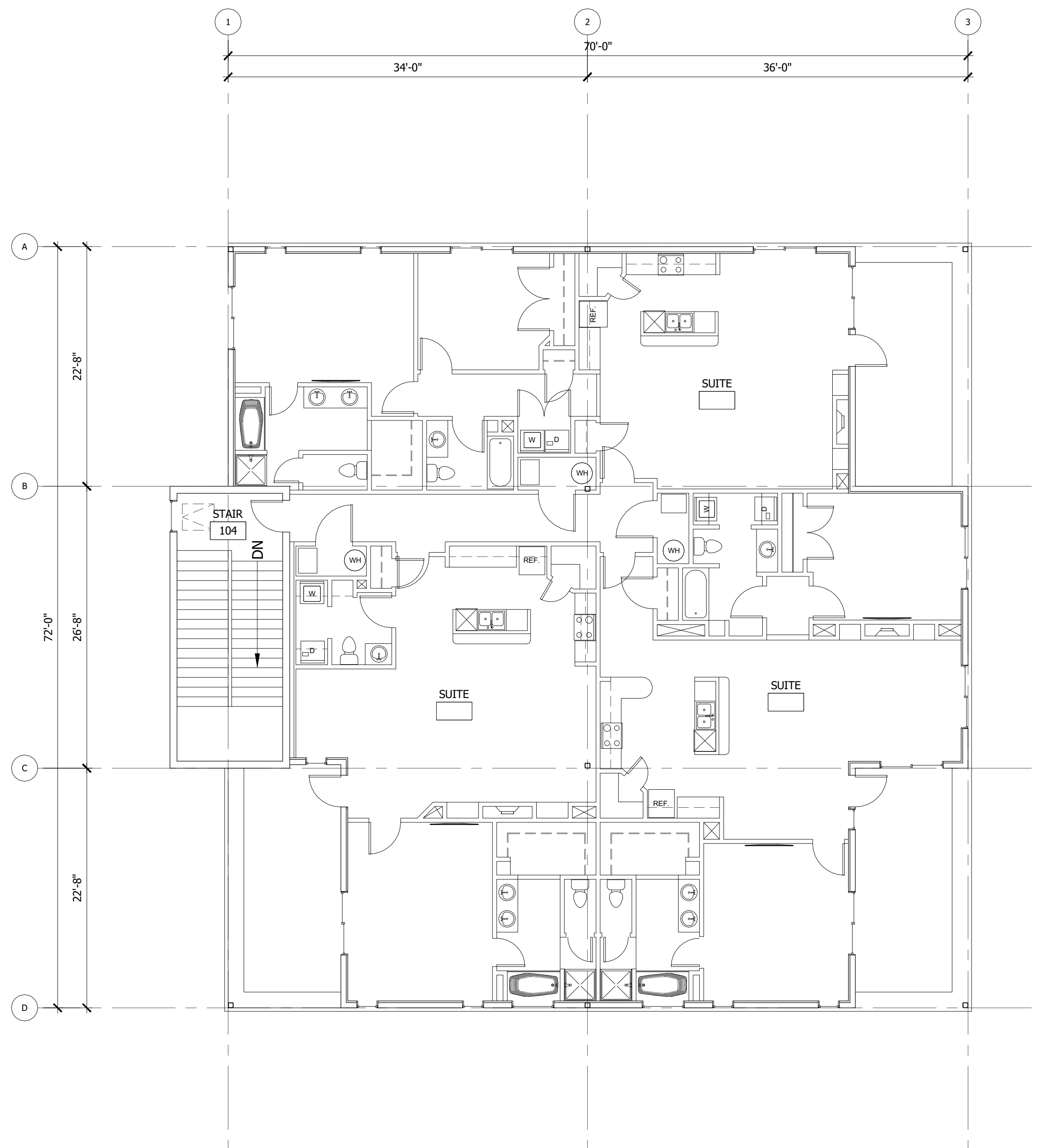


BUILDING 1 - GROUND FLOOR PLAN
SCALE: 1/8" = 1'-0"



BUILDING 1 - SECOND FLOOR PLAN
SCALE: 1/8" = 1'-0"

COPYRIGHT 2015
BRS ARCHITECTS
ALL RIGHTS RESERVED. REPRODUCTION OR TRANSLATION
OF ANY PART OF THIS WORK WITHOUT WRITTEN PERMISSION
OF BRS ARCHITECTS IS UNLAWFUL AND SUBJECT TO CRIMINAL PROSECUTION.

CITY APPROVAL

NO.	REVISIONS	DATE

1010 S. ALLANTE PL.
SUITE 100
BOISE, IDAHO 83709
(208) 336-8370
FAX (208) 336-8380



PROPOSED DEVELOPMENT FOR:
NORTH POINTE RETAIL
BUILDINGS 1 + 4
W. STATE STREET
BOISE, IDAHO 83714

DRAWN	RR
DATE	05-11-2015
CHECKED	TK
JOB NO.	15028
SHEET	A1.1