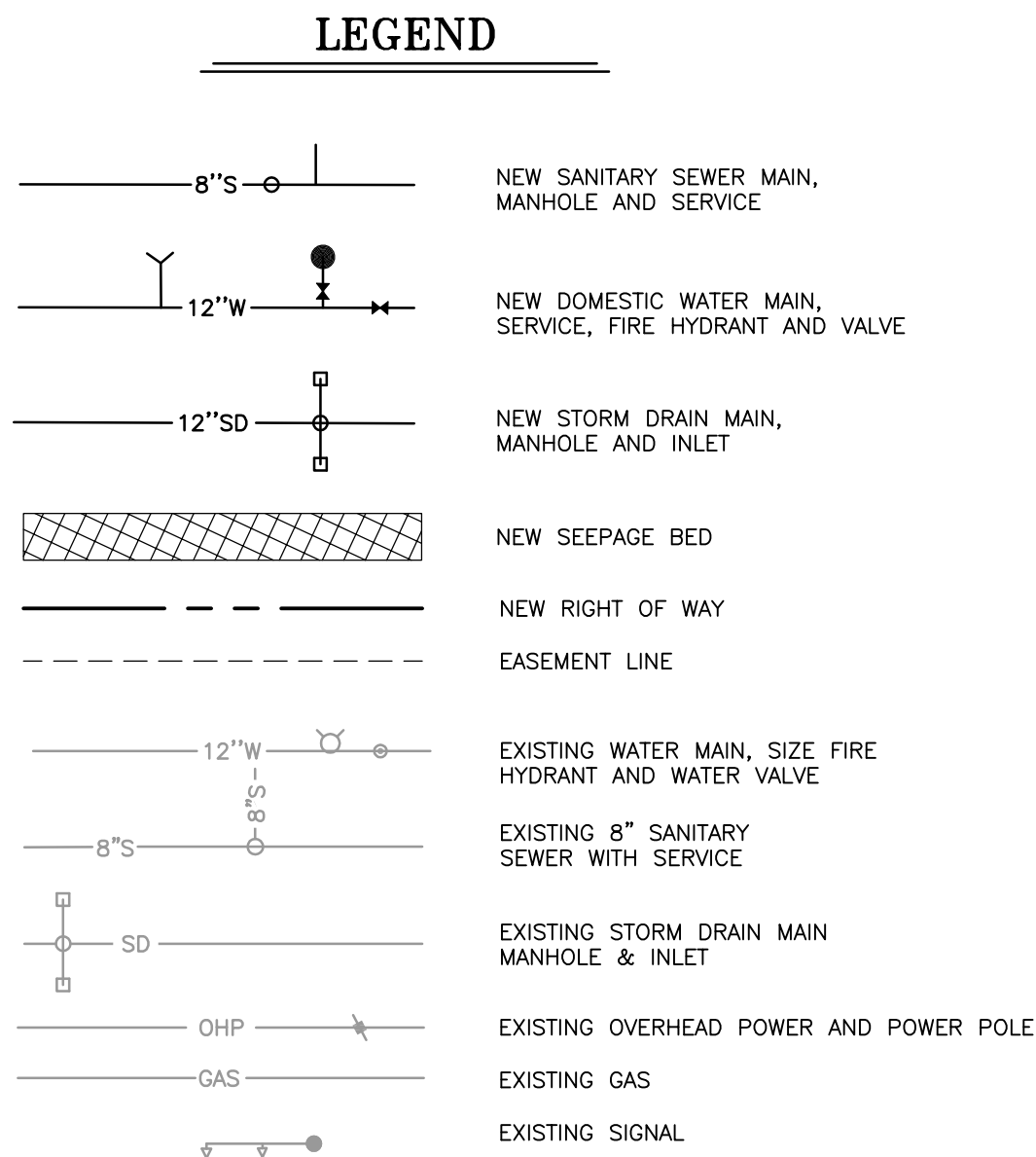


© COPYRIGHT 2010 RIVERIDGE ENGINEERING CO. THIS INSTRUMENT IS THE PROPERTY OF RIVERIDGE ENGINEERING CO. ANY REPRODUCTION, REUSE OR MODIFICATION OF THIS INSTRUMENT OR ITS CONTENTS WITHOUT WRITTEN PERMISSION OF RIVERIDGE ENGINEERING CO. IS STRICTLY PROHIBITED.

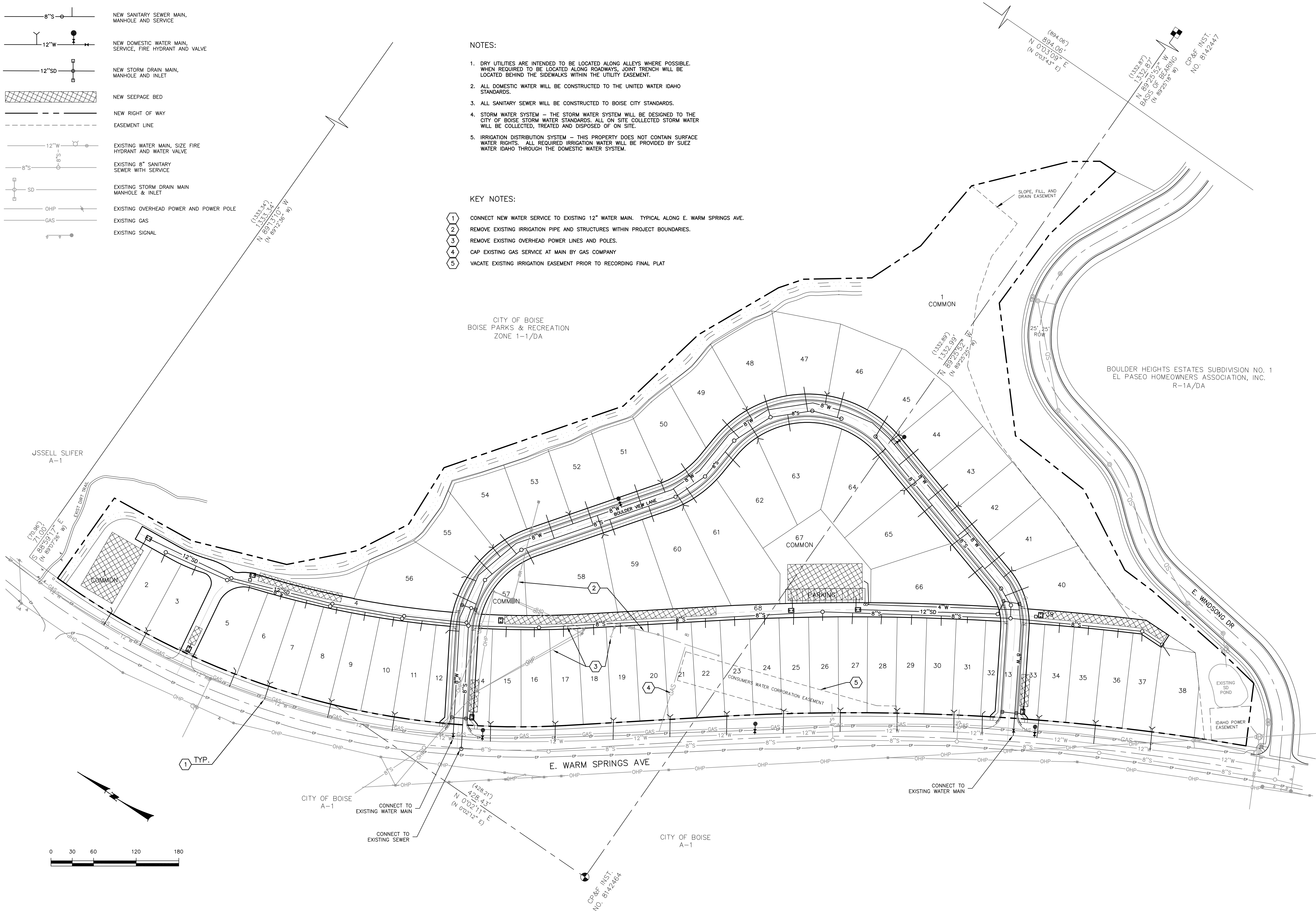


NOTES:

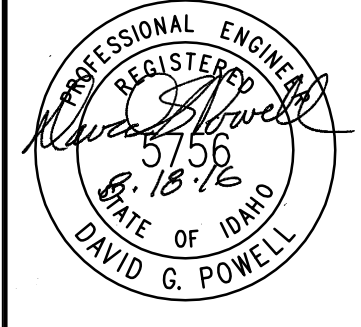
1. DRY UTILITIES ARE INTENDED TO BE LOCATED ALONG ALLEYS WHERE POSSIBLE. WHEN REQUIRED TO BE LOCATED ALONG ROADWAYS, JOINT TRENCH WILL BE LOCATED BEHIND THE SIDEWALKS WITHIN THE UTILITY EASEMENT.
2. ALL DOMESTIC WATER WILL BE CONSTRUCTED TO THE UNITED WATER IDAHO STANDARDS.
3. ALL SANITARY SEWER WILL BE CONSTRUCTED TO BOISE CITY STANDARDS.
4. STORM WATER SYSTEM - THE STORM WATER SYSTEM WILL BE DESIGNED TO THE CITY OF BOISE STORM WATER STANDARDS. ALL ON SITE COLLECTED STORM WATER WILL BE COLLECTED, TREATED AND DISPOSED OF ON SITE.
5. IRRIGATION DISTRIBUTION SYSTEM - THIS PROPERTY DOES NOT CONTAIN SURFACE WATER RIGHTS. ALL REQUIRED IRRIGATION WATER WILL BE PROVIDED BY SUEZ WATER IDAHO THROUGH THE DOMESTIC WATER SYSTEM.

KEY NOTES:

1. CONNECT NEW WATER SERVICE TO EXISTING 12" WATER MAIN. TYPICAL ALONG E. WARM SPRINGS AVE.
2. REMOVE EXISTING IRRIGATION PIPE AND STRUCTURES WITHIN PROJECT BOUNDARIES.
3. REMOVE EXISTING OVERHEAD POWER LINES AND POLES.
4. CAP EXISTING GAS SERVICE AT MAIN BY GAS COMPANY
5. VACATE EXISTING IRRIGATION EASEMENT PRIOR TO RECORDING FINAL PLAT



RiverRidge Engineering Company
2447 S. Vista Ave. Boise, Idaho 83705
Ph. (208) 344-1180, Fax (208) 344-1182



E-FILE NAME	DESIGNED	WH	DRAWN	WH	CHECKED	DGP	APPROVED	DGP
NO.	REVISIONS	ITEM	DATE					

WARM SPRINGS VILLAGE - PRELIMINARY PLAT
SITUATED IN THE S 1/2 OF SECTION 13 AND THE NE 1/4 OF SECTION 24,
TOWNSHIP 3 NORTH, RANGE 2 EAST, BM, ADA COUNTY, IDAHO.

UTILITY PLAN