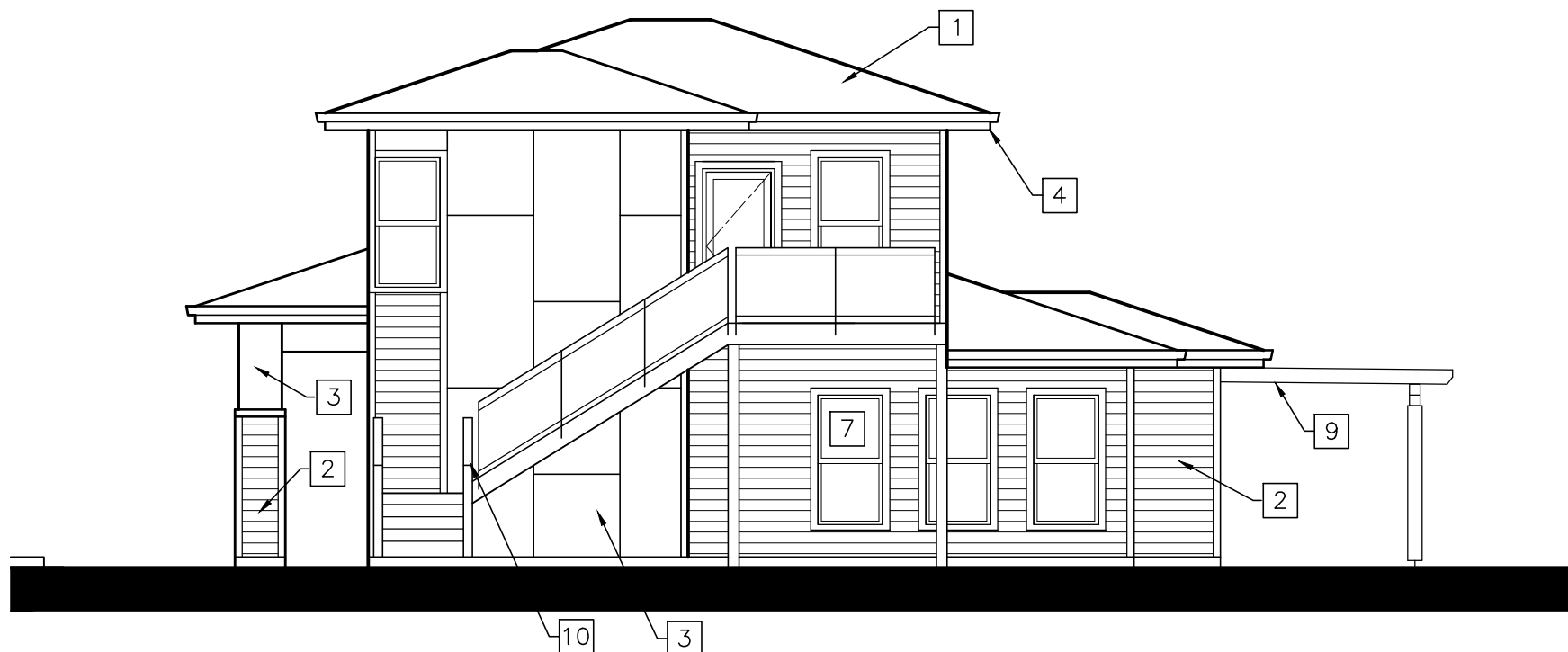


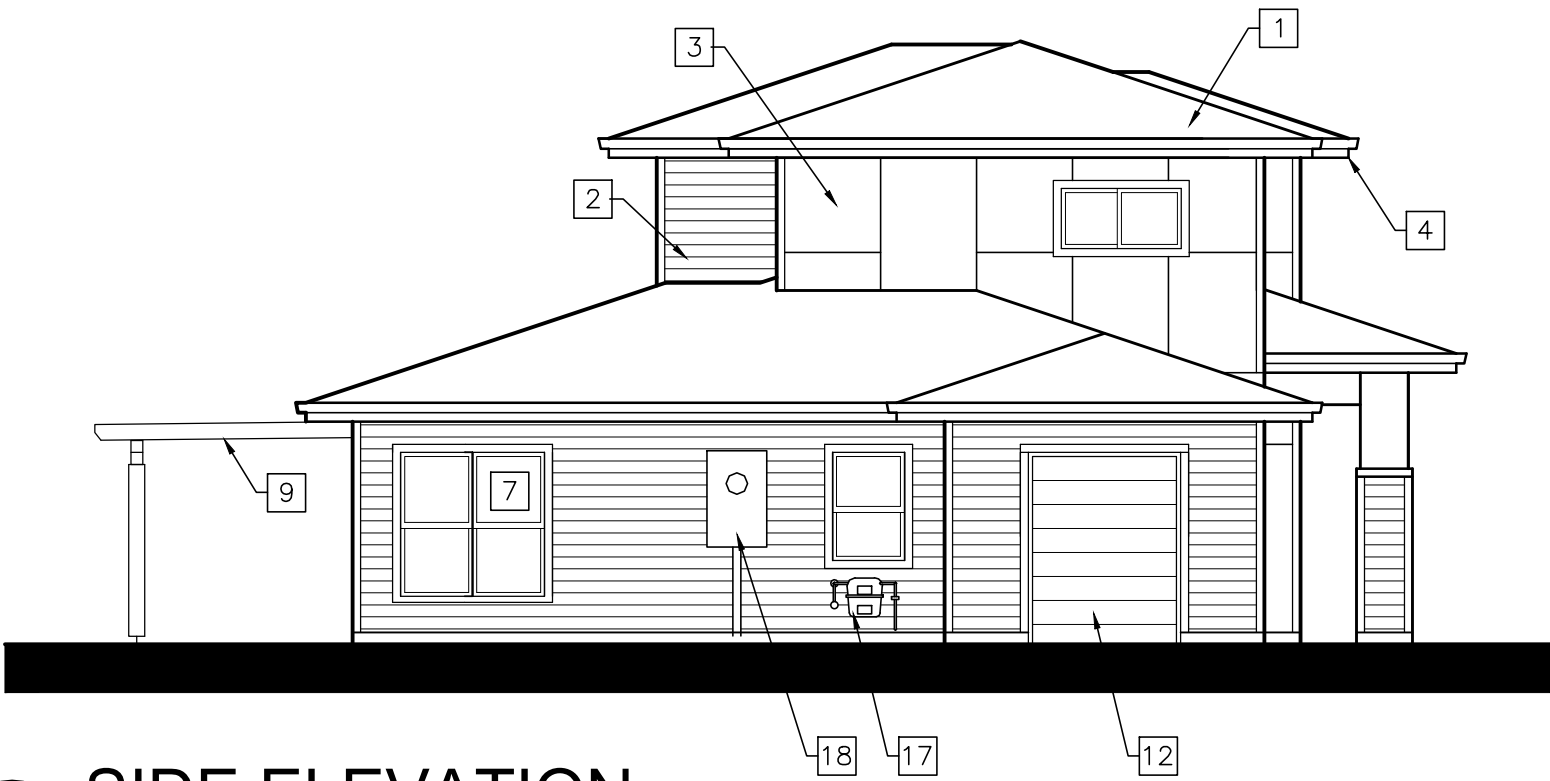
© 2016 DAVE EVANS CONSTRUCTION. THIS INSTRUMENT IS THE PROPERTY OF DEC. ANY REPRODUCTION, REUSE OR MODIFICATION OF THIS INSTRUMENT OR ITS CONTENTS WITHOUT SPECIFIC WRITTEN PERMISSION OF DEC IS STRICTLY PROHIBITED.



FRONT ELEVATION
SCALE: 1/8" = 1'-0"



SIDE ELEVATION
SCALE: 1/8" = 1'-0"



SIDE ELEVATION
SCALE: 1/8" = 1'-0"



REAR ELEVATION
SCALE: 1/8" = 1'-0"

KEYNOTES

- 1 ASPHALT COMPOSITE SHINGLES - 30 YEAR - COLOR:
- 2 'HARDPLANK' LAP SIDING - SMOOTH - 7" EXPOSED - COLOR:
- 3 'HARDBOARD' STAGGERED REVEAL PANEL W/METAL TRIM - COLOR:
- 4 'HARDTRIM' FASCIA & TRIM - COLOR:
- 5 NOT USED
- 6 OUTLINE OF VINYL FENCE SCREENING AC CONDENSER UNITS
- 7 VINYL WINDOWS - LOW E COATING - TAUPE COLOR
- 8 VINYL SLIDING DOOR - LOW E COATING - ALMOND COLOR
- 9 ROUGH SAWN STAINED WOOD DETAILING
- 10 PREFABRICATED STEEL GUARDRAIL/RAILING - PAINTED
- 11 ALUM. STOREFRONT DOOR
- 12 STEEL OVERHEAD DOOR - COLOR:
- 13 INSUL. STEEL DOOR - COLOR:
- 14 WALL MOUNTED LIGHT FIXTURE - SEE ELEC.
- 15 ONE HOUR RATED DOOR
- 16 HINGED PATIO DOOR
- 17 GAS METER LOCATION
- 18 POWER METER LOCATION
- 19 10" ADDRESS NUMBERS
- 20 NOT USED

SEP. 27, 2016

LICENSED ARCHITECT
AR-984813
PRELIMINARY
NOT FOR CONSTRUCTION
ROBERT J. POWELL
STATE OF IDAHO

DAVE EVANS CONSTRUCTION
7761 W. Riverside Dr.
Boise, ID 83714
Office 853-1203 Fax 853-1220
www.daveevansconstruction.com

STATION VILLAGE
APARTMENTS
2350 W. KOOTENAI ST.
BOISE, ID 83705

REVISIONS

ARCH. INDEX

A4.3
ELEVATIONS
CLUBHOUSE