

SITE PLAN
SCALE: 1" = 50'-0"



AERIAL (SITE)
SCALE: N.T.S.

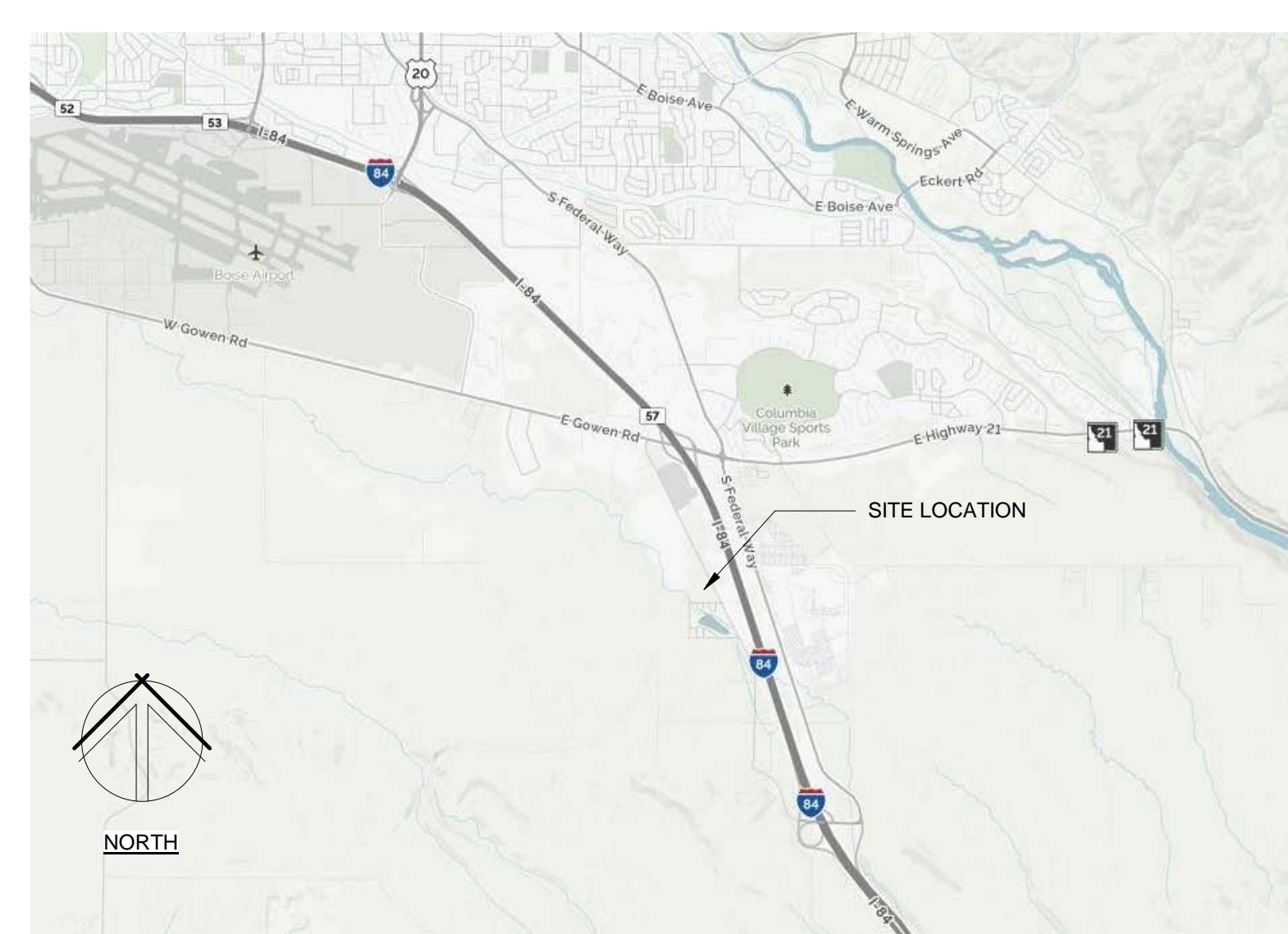
PROJECT DESIGN TEAM

- | | |
|---|--|
| <p>ARCHITECT
BRS ARCHITECTS
1010 S. ALLANTE PL.
SUITE 100
BOISE, IDAHO 83709
ARCHITECT OF RECORD: JOSEPH THOMPSON
CONTACT: VICTOR FERRAL
PHONE: (208) 336-8370
FAX: (208) 336-8380
E-MAIL: VICTOR@BRSARCHITECTS.COM</p> <p>CIVIL ENGINEER
BRECKON LAND DESIGN
6611 NORTH GLENWOOD ST.
GARDEN CITY, IDAHO 83714
CONTACT: JON BRECKON
P: 208.376.5153
E: JBRECKON@BRECKONLD.COM</p> <p>LANDSCAPE ARCHITECT
BECK & BAIRD LANDSCAPE ARCHITECTURE
1523 WEST HAYS ST.
BOISE, IDAHO 83702
CONTACT: JEFF SMITH
P: 208.342.4811
E: JSMITH@BECKANDBAIRD.NET</p> <p>SOIL TESTING
MATERIAL AND TESTING INSPECTION (MTI)
2791 SOUTH VICTORY VIEW WAY
BOISE, IDAHO 83709
CONTACT: MONICA SACULLES
P: 208.376.4748
E: MONICA.SACULLES@MTI-ID.COM</p> <p>PRE-ENGINEERED METAL BUILDING
NICOOR BUILDING SYSTEMS
2184 CHANNING WAY #440
IDAHO FALLS, IDAHO 83404
CONTACT: JOSHUA SOUTHWICK
P: 435.720.7917
E: JOSHUA.SOUTHWICK@NBSUT.COM</p> | <p>STRUCTURAL ENGINEER
STAPLEY ENGINEERING
8701 WEST HACKMORE ST.
BOISE, IDAHO 83709
CONTACT: GREG LESHMAN
P: 208.375.8340
E: GREG@STAPLEY.NET</p> <p>MECHANICAL ENGINEER
DC ENGINEERING
520 EAST CORPORATE DR.
MERIDIAN, IDAHO 83642
CONTACT: JAMES SCHROEDER
P: 208.288.2191
E: JSCHROEDER@DCENGINEERING.NET</p> <p>ELECTRICAL ENGINEER
ELECTRICAL ENGINEERING COMPANY
800 SOUTH INDUSTRY WAY, SUITE 350
MERIDIAN, IDAHO 83642
CONTACT: JEFF SMITH
P: 208.378.4450
E: JSMITH@EECO.COM</p> <p>LAND SURVEY
FOX LAND SURVEY
1515 SHOSHONE ST.
BOISE, IDAHO 83705
CONTACT: TIM FOX
P: 208.342.7627
E: TIMFOX@FOXLANDSURVEYS.COM</p> <p>ACOUSTICAL ENGINEER
MULLINS ACOUSTICS
10400 W. OVERLAND ROAD #211
BOISE, IDAHO 83709
CONTACT: EARL MULLINS
P: 208.514.6264</p> |
|---|--|

OWNER & CONTRACTOR

- | | |
|---|--|
| <p>OWNER
R+L CARRIERS
SCOTT ECCARD - PROJECT MANAGER
600 GILHAM ROAD
WILMINGTON, OHIO 45177
P: 937.414.1139
E: SCOTT.ECCARD@RLCARRIERS.COM</p> | <p>CONTRACTOR (TO BE DETERMINED)
CONTRACTOR NAME:
CONTRACTOR ADDRESS:
CITY, STATE ZIP:
PHONE: (999) 999-9999
FAX: (999) 999-9999
E-MAIL:
CONTACT:</p> |
|---|--|

VICINITY MAP



BUILDING CODE SUMMARY

NAME OF PROJECT:	R+L CARRIERS (DISTRIBUTION CENTER (NEW TRUCKING TERMINAL COMPLEX))
ADDRESS:	7901 SOUTH EISENMAN RD. BOISE, ID 83716
PROPOSED USE:	TRUCKING DOCKS, OFFICES, TRUCK MAINTENANCE, FUEL ISLAND
AUTHORIZED AGENT:	BRS ARCHITECTS
PHONE:	(208) 336-8370
OWNED BY:	R+L CARRIERS (PRIVATE)
CODE ENFORCEMENT:	CITY OF BOISE

SITE DATA

PARCEL NUMBER:	S151212050
LAND USE ZONE:	M4D
TOTAL SITE SIZE:	13.257 ACRES (577,474.92 SF)

BUILDING DATA

BUILDING DATA (WAREHOUSE w/ SUPPORTING OFFICES)	
ADDRESS:	7901 SOUTH EISENMAN RD. BOISE, ID. 83716
CONSTRUCTION TYPE:	TYPE II-B
FIRE SPRINKLERS:	YES
FIRE ALARM:	YES
BUILDING SIZE:	65,466 SF
BUILDING HEIGHT:	29'-0"
NUMBER OF STORIES:	1-STORY
PRIMARY OCCUPANCY GROUP:	S-1, TRUCKING TERMINAL
SECONDARY OCCUPANCY GROUP:	BUSINESS - OFFICE
BUILDING DATA (MAINTENANCE BUILDING)	
CONSTRUCTION TYPE:	TYPE II-B
FIRE SPRINKLERS:	YES
FIRE ALARM:	YES
BUILDING SIZE:	9,000 SF
BUILDING HEIGHT:	24'-0"
NUMBER OF STORIES:	1-STORY
OCCUPANCY GROUP:	S-1, TRUCKING MAINTENANCE
BUILDING DATA (FUEL CANOPY)	
CONSTRUCTION TYPE:	TYPE II-B
FIRE SPRINKLERS:	NO
FIRE ALARM:	NO
BUILDING SIZE:	2,560 SF
BUILDING HEIGHT:	18'-0"
NUMBER OF STORIES:	1-STORY
OCCUPANCY GROUP:	S-1, CANOPY ROOF ONLY

BUILDING CODES

- CITY OF BOISE ADOPTED BUILDING CODES**
- 2015 INTERNATIONAL BUILDING CODE (IBC)
 - 2015 INTERNATIONAL ENERGY CONSERVATION CODE (IECC)
 - 2017 IDAHO STATE PLUMBING CODE
 - 2017 NATIONAL ELECTRICAL CODE (NEC)
 - 2015 INTERNATIONAL FIRE CODE (IFC)
 - 2012 INTERNATIONAL MECHANICAL CODE (IMC)

PARKING REQUIREMENTS

- CITY OF BOISE CHAPTER 11-07 DEVELOPMENT & DESIGN STANDARDS**
- TABLE 11-07.1**
WAREHOUSE 60,466 / 2,000 = 30.23 (31)
MAINTENANCE 9,000 / 2,000 = 4.5 (5)
OFFICE 5,000 / 300 = 16.66 (17)
TOTAL PARKING REQUIRED SPACES = 53
TOTAL PARKING PROVIDED SPACES = 71
- TABLE 11-07.5**
ADA REQUIRED PARKING SPACES = 3
ADA PROVIDED PARKING SPACES = 3
- TABLE 11-07.2**
B. REQUIRED BICYCLE PARKING
1 BICYCLE PARKING SPACES FOR EVERY 10 REQUIRED PARKING SPACES
54 / 10 = 5.4 (6)
REQUIRED BICYCLE PARKING = 6
PROVIDED BICYCLE PARKING = 6

KEYNOTES

CITY APPROVAL STAMP

NO.	REVISIONS	DATE

DRAWN	VF
DATE	06/13/18
CHECKED	JAT
JOB NUMBER	18040
ARCHITECTURAL SITE PLAN	

AS1.1