



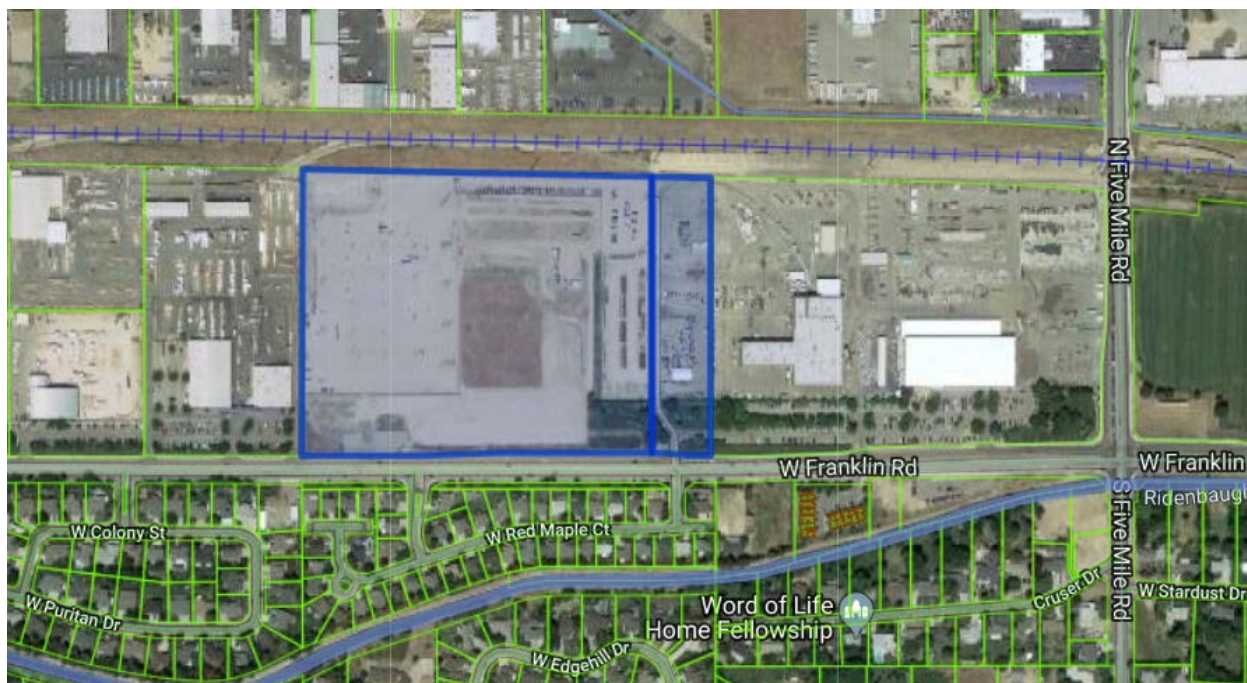
August 13, 2019

Josh Wilson, Design Review
City of Boise
150 N. Capitol Blvd
Boise, ID 83701

RE: Idaho Power Boise Operations Center | 11350 W Franklin Road, Boise, ID
Design Review Application | PN 119044

Dear Josh,

We are pleased to submit the design review application associated with the Idaho Power Boise Operations Center. The project site is generally located on the north side of W. Franklin Road, west of Five Mile Road.



Vicinity Map – project site in blue

Idaho Power proposes to build a new Skills Training Center, associated parking, and access road as Phase 1, starting in the fall of 2019 and construction completion estimated in early 2021. Phase 2 will start construction in 2021 and will consist of a pole storage yard, fleet vehicle parking with surface parking and covered parking, temporary parking for staff that use the fleet vehicles, and electric vehicle charging stations. Phase 2 construction is anticipated to be completed in 2021.

The existing access from W. Franklin Road will be updated with new landscaping and access gate. The landscape is designed with regionally appropriate plantings selected to provide year-round interest and blend into the existing landscape. A new access, aligned with S. Wilma Way, has been preliminarily approved by ACHD. The existing curb cut further to the west on the property will be closed and improved with sidewalk and landscaping.

Thank you in advance for your consideration and support. We look forward to working with the City of Boise to plan a quality project of which we can all be proud.

Sincerely,



Tamara Thompson
Director of Client Services
The Land Group, Inc.