



**PLANO ROAD
 SUBDIVISION
 6890 N PLANO ROAD
 BOISE, IDAHO**

THE STEWART LAND GROUP
 HAS NOT CONDUCTED A TITLE SURVEY
 OF THIS PROPERTY.
 CONTACT
 STEWART TITLE
 PHONE (208) 333-4135
 FAX (208) 333-4147

**PRELIMINARY
 PLAT**

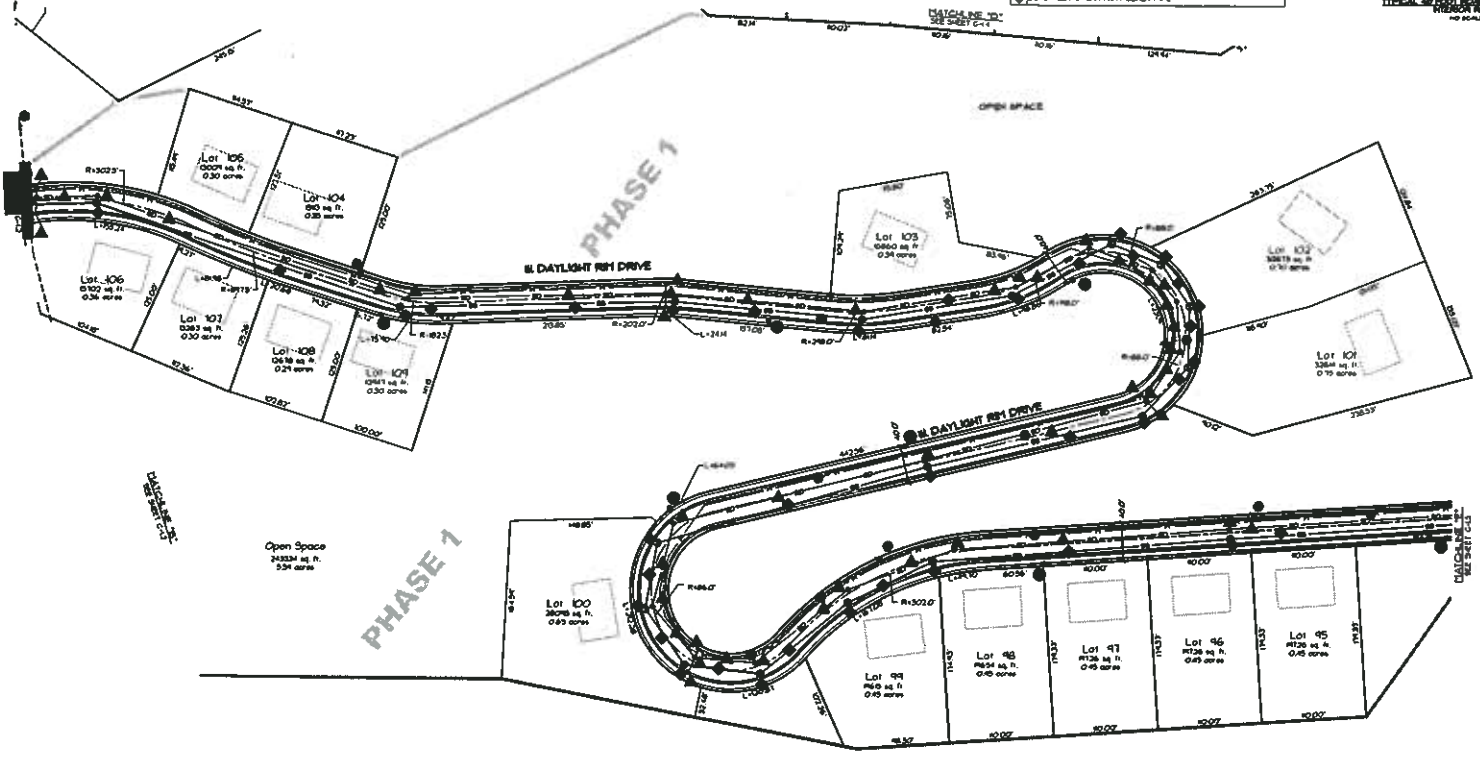
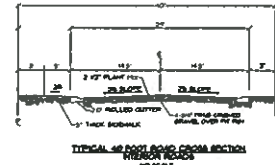
FOR REVIEW

PROJECT NUMBER	13-000
DATE	4-1-13
DESIGNED BY	AS
CHECKED BY	AS
PROJECT MANAGER	AS

C-1.3

KEY NOTES

- CONSTRUCT CONCRETE CURB AND GUTTER TYPE II (30-10)
- CONSTRUCT FLOOR/FRAM BAY TYPE 'C' SIZE 30-10
- CONSTRUCT 6" CONCRETE SIDEWALK
- CONSTRUCT STORM DRAIN MANHOLE
- CONSTRUCT CATCH BASIN TYPE VI (10-60) USE TYPE I GRATE
- CONSTRUCT 8" STORM DRAIN PIPE
- CONSTRUCT 8" STORM DRAIN PIPE
- CONSTRUCT CITY DETENTION/RETENTION POND ACHD-640
- INSTALL CITY STD. STREET LIGHT
- INSTALL 8" WATER LINE
- CONSTRUCT 10" WATERLINE
- CONSTRUCT WATER TANK
- INSTALL FIRE HYDRANT SEE 80-101
- INSTALL STD. SLOTTED MANHOLE (22) 30-50
- CONSTRUCT 8" SANITARY SLOTTED PIPE

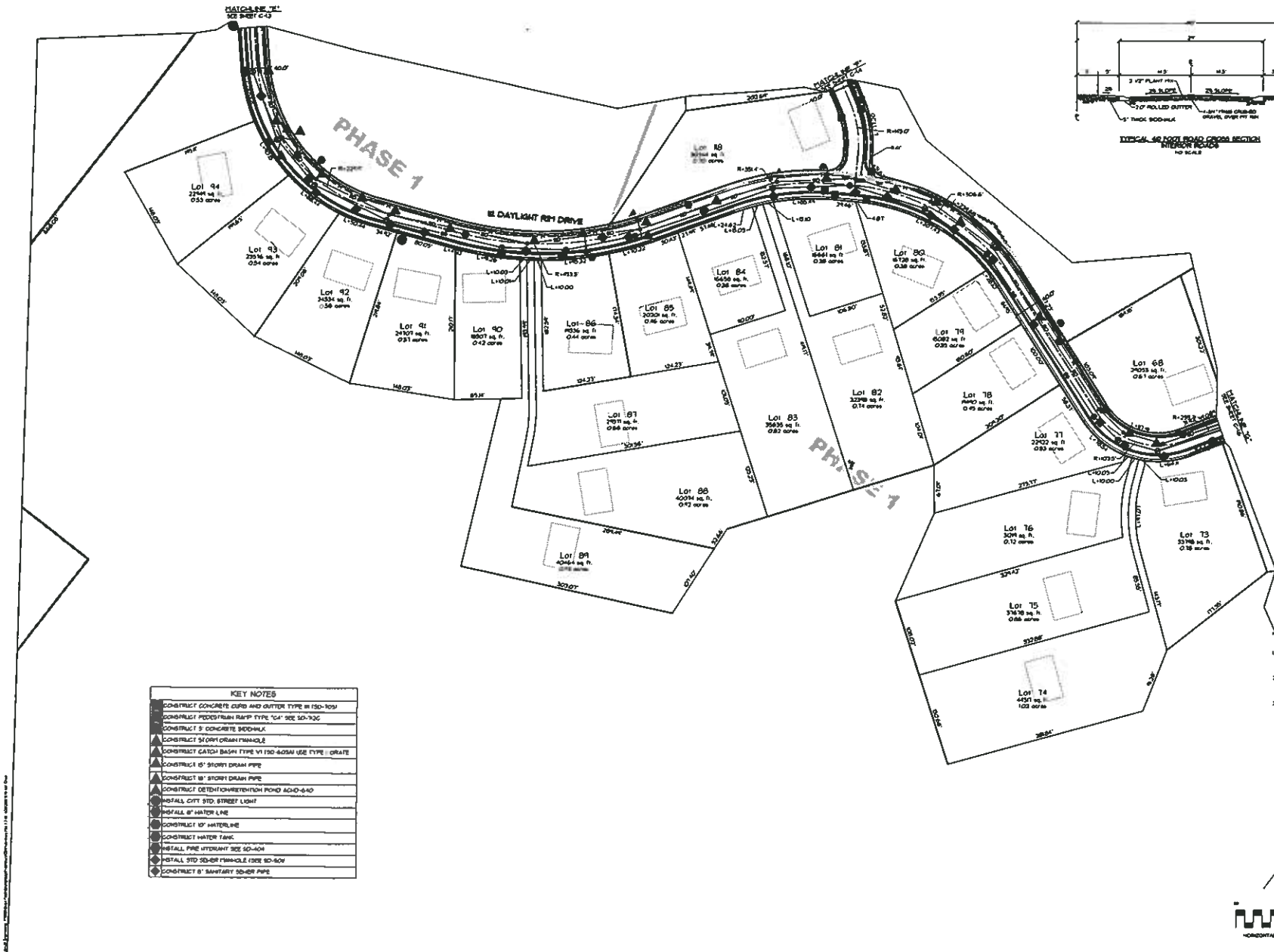


LEGEND

(Symbol)	EXISTING FIRE HYDRANT
(Symbol)	PROPOSED FIRE HYDRANT
(Symbol)	WATER VALVE
(Symbol)	WATER METER
(Symbol)	THURST BLOCK
(Symbol)	CULINARY WATER LINE
(Symbol)	SANITARY SLOTTED MANHOLE
(Symbol)	SANITARY SLOTTED CLEANOUT
(Symbol)	SANITARY SLOTTED LINE
(Symbol)	SANITARY SLOTTED LATERAL
(Symbol)	GAS METER
(Symbol)	GAS LINE
(Symbol)	EXISTING LAND DRAIN
(Symbol)	PROPOSED STORM DRAIN
(Symbol)	EXISTING STORM DRAIN
(Symbol)	EDGE OF SLOPE AND 30' OFFSET
(Symbol)	TRAIL



As of 4/1/13, the information on this drawing is current. All other information is for reference only.



Azimuth Engineering, Inc.
 1415 W. GARDEN BLVD.
 BOISE, IDAHO 83725
 PHONE: (208) 333-1111
 FAX: (208) 333-1112
 WWW.AZIMUTHENGINEERING.COM



PLANO ROAD SUBDIVISION
6890 N PLANO ROAD
BOISE, IDAHO

STEVEN LANDRUM
 688 FORT SANDOZ ST. #100
 MERILE, UTAH 84051
 No. 12369
 EXPIRES: 12/31/2016
 PHONE: (208) 333-9126
 FAX: (208) 333-9447

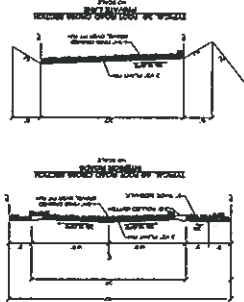
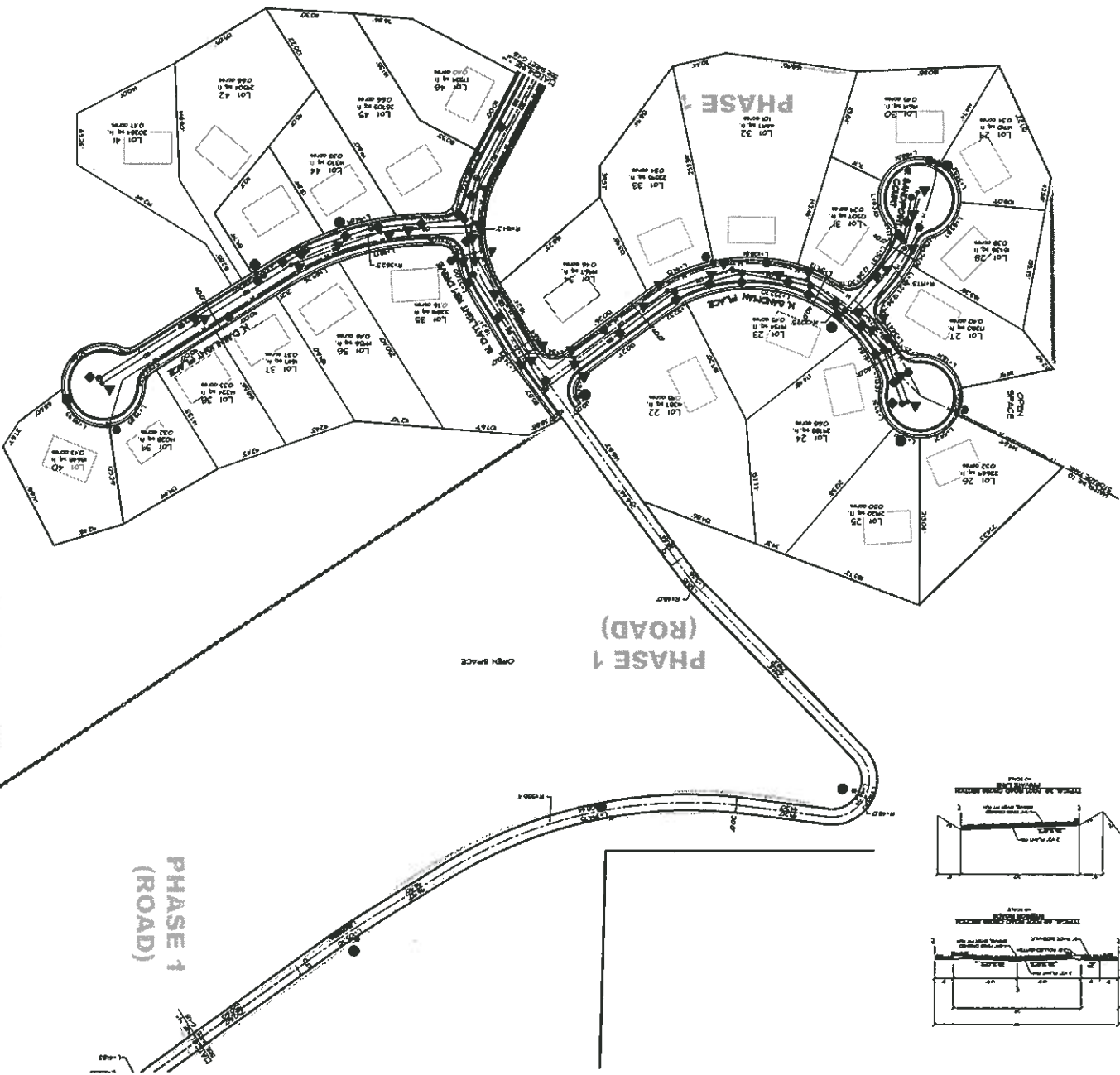
PRELIMINARY PLAT

FOR REVIEW

DESIGNED BY	DATE
DRAWN BY	DATE
CHECKED BY	DATE
APPROVED BY	DATE

C-1.5

12



KEY NOTES

1. CONSTRUCT CONCRET DRIVE AND CURBS WITH 12" MIN. THICKNESS
2. CONSTRUCT RECESSED DRIVE CURBS WITH 4" SET BACK
3. CONSTRUCT 3" CONCRETE SHOULDERS
4. CONSTRUCT STREET DRAIN TRAVELERS
5. CONSTRUCT CATCH BASIN TRAP IN THE DOWN SLOPE OF THE DRIVE
6. CONSTRUCT 6" STORM DRAIN PIPES
7. CONSTRUCT DISTRIBUTION TRUNK ROAD 4" DIA.
8. INSTALL CITY STD STREET LIGHTS
9. INSTALL 6" WATER LINES
10. CONSTRUCT 4" WATER LINES
11. CONSTRUCT WATER TAPS
12. INSTALL 12" WATER MAINS TO 10' DIA.
13. CONSTRUCT 12" WATER MAINS TO 10' DIA.
14. CONSTRUCT 12" WATER MAINS TO 10' DIA.
15. CONSTRUCT 12" WATER MAINS TO 10' DIA.
16. CONSTRUCT 12" WATER MAINS TO 10' DIA.
17. CONSTRUCT 12" WATER MAINS TO 10' DIA.
18. CONSTRUCT 12" WATER MAINS TO 10' DIA.
19. CONSTRUCT 12" WATER MAINS TO 10' DIA.
20. CONSTRUCT 12" WATER MAINS TO 10' DIA.

NOTES

1. ALL CONSTRUCTION SHALL CONFORM TO BOISE CITY AND STATE DESIGN AND CONSTRUCTION STANDARDS.
2. DRAINAGE WORK SHALL BE DONE TO BE APPROVED BY THE BOISE CITY ENGINEER.
3. ALL WORK SHALL BE SUBJECT TO THE BOISE CITY ENGINEER'S REVIEW AND APPROVAL.
4. THE OWNER SHALL BE RESPONSIBLE FOR THE COST OF ALL UTILITY CONNECTIONS TO THE STREET.



FOR REVIEW

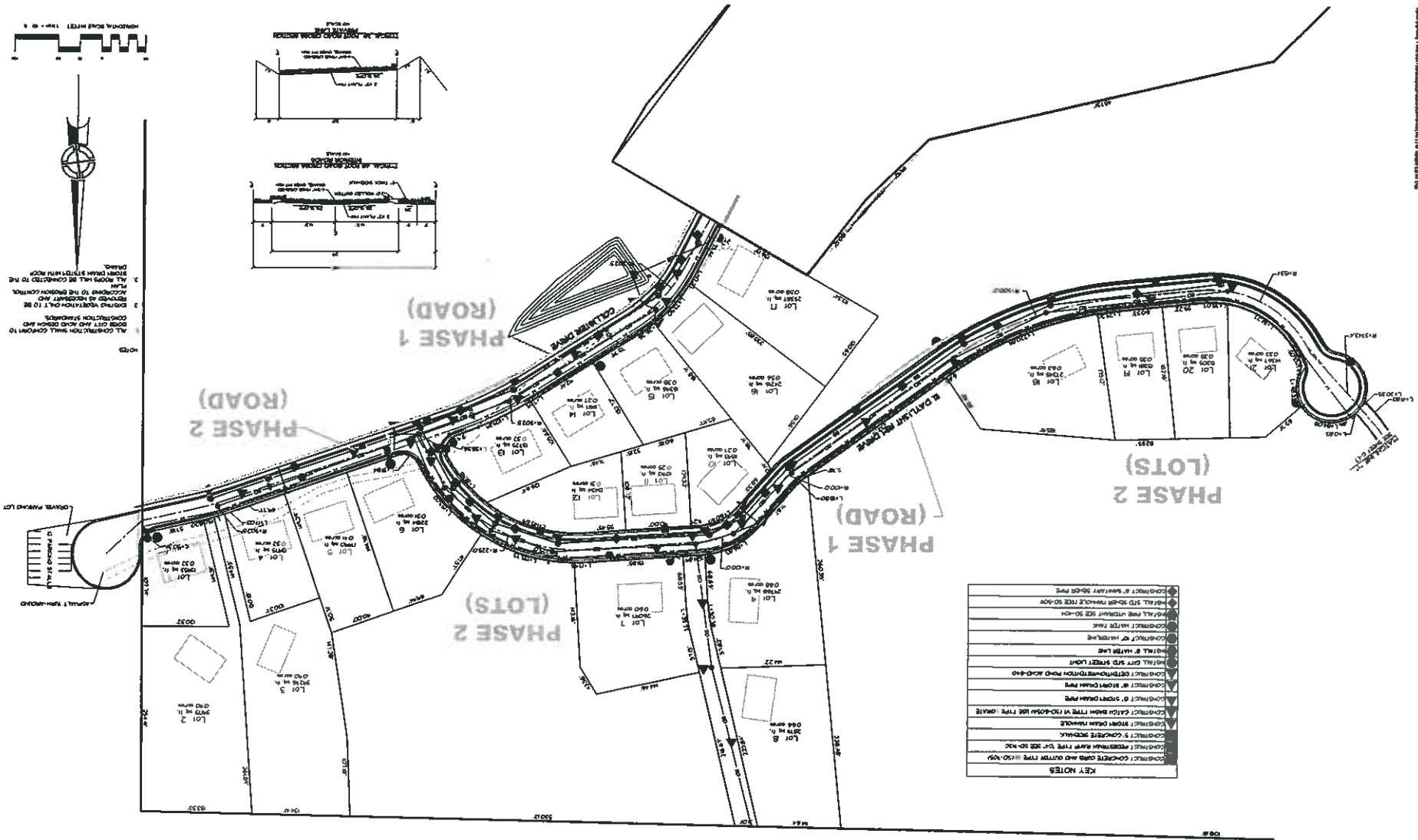
PRELIMINARY PLAT

DATE: 11/15/2011
 DRAWN BY: J. HARRIS
 CHECKED BY: J. HARRIS
 PROJECT NO.: 1111111111

C-1.7

PLANO ROAD SUBDIVISION
6890 N PLANO ROAD
BOISE, IDAHO

Azimuth Engineering, Inc.
 ENGINEERS
 1111 N. 10th Street, Suite 100
 Boise, Idaho 83702
 Phone: (208) 333-1111
 Fax: (208) 333-1112
 Website: www.azimutheng.com



C-1.8

DATE: 01/14/2014
 TIME: 10:41:14 AM
 USER: JLM

FOR REVIEW

PRELIMINARY

1. ALL CONSTRUCTION SHALL CONFORM TO BOISE CITY AND ROAD DESIGN AND CONSTRUCTION STANDARDS.
 2. DRIVE VARIATION ONLY TO BE ACCORDING TO THE ENGINEER'S CONTROL.
 3. ALL ROADS SHALL BE CONNECTED TO THE STREET DRAIN SYSTEM WITHIN EACH PHASE.
 4. ALL ROADS SHALL BE CONNECTED TO THE STREET DRAIN SYSTEM WITHIN EACH PHASE.

PLAN ROAD

SUBDIVISION

6890 N PLANO ROAD

BOISE, IDAHO

12399

REGISTERED PROFESSIONAL ENGINEER

STATE OF IDAHO

Azimuth

Engineering, Inc.

1000 S. GARDEN BLVD. SUITE 200
 BOISE, IDAHO 83725
 TEL: 208.333.1111
 FAX: 208.333.1112