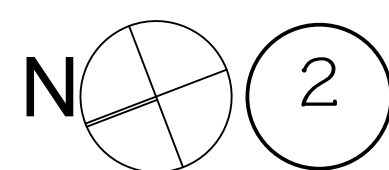
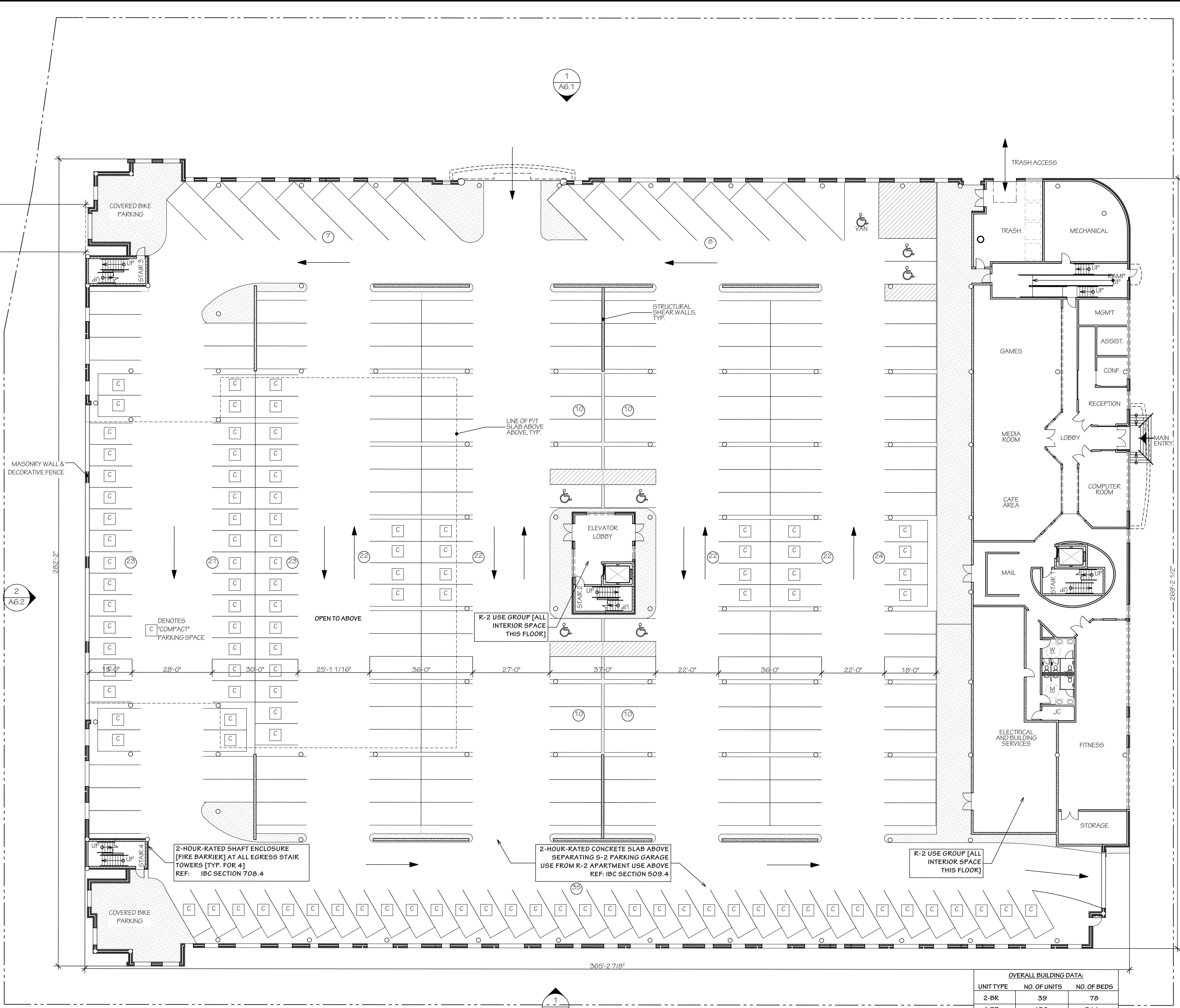


teamwork/bimserv-k2a/11211_composite FIRST FLOOR PLAN Monday, November 28, 2011 2:04 PM

6500 CFS WATER LINE PER BOISE CITY

~ BOISE RIVER ~

PROPERTY LINE



2 FIRST FLOOR/SITE PLAN

SCALE: 1/16" = 1'-0"

USE GROUP THIS FLOOR: S-2 PARKING GARAGE, R-2 APARTMENT
NFPA 13 AUTOMATIC SPRINKLER SYSTEM THROUGHOUT PER IBC SECTION 903.2.8

OVERALL BUILDING DATA:		
UNIT TYPE	NO. OF UNITS	NO. OF BEDS
2-BR	39	78
4-BR	136	544
TOTAL	175	622

Architecture
Engineering
Planning
Interior Design

Collingswood, NJ
756 Hudson Avenue - 08108
Tel: 856.854.1880

Philadelphia, PA
8 North Center
1628 John F. Kennedy Blvd - 19103
Suite 1608
Tel: 215.985.0111

On the Web
www.kitchenandassociates.com

Date	11/29/11
Job	11211
Drawn	TPB
Revision	Date

11211_composite [bimserv-k2a]



River Edge Apartments
1004 W. Royal Boulevard
Boise, ID 83706

A1
FIRST FLOOR PLAN

11/29/11 CONDITIONAL USE APPLICATION / BOISE RIVER SYSTEM APPLICATION - NOT FOR CONSTRUCTION

ROYAL BOULEVARD