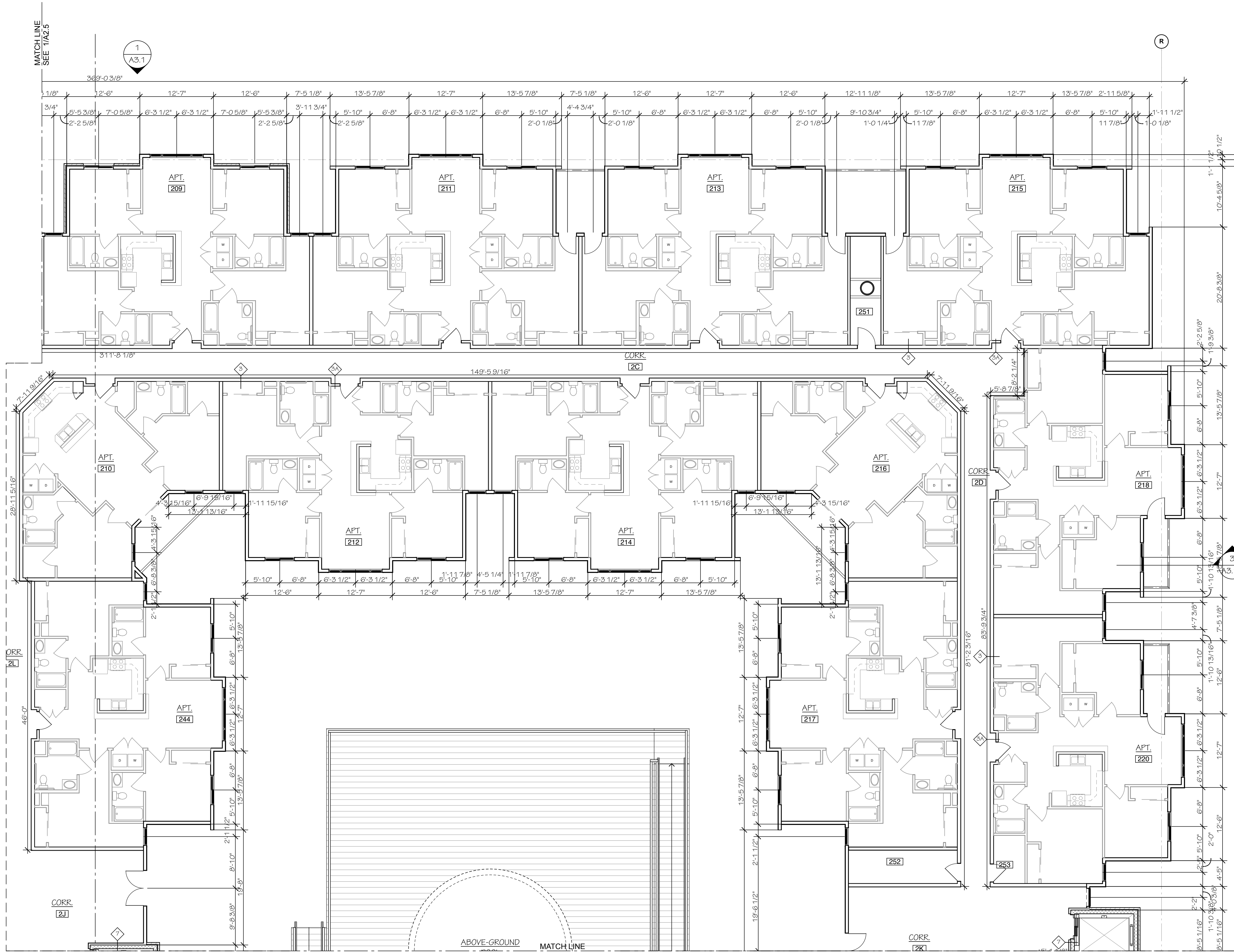


# INTERIOR PARTITION TYPES

1	INTERIOR PARTITION 2x4 NON-FIRE RATED	5/8" GWB	2x4 WOOD STUDS (SEE STRUCTURAL DWGS FOR SPACING)
1A	INTERIOR PARTITION 2 x 4 WOODS STUDS W/ 3" MINERAL WOOL INSULATION		
1B	INTERIOR PARTITION 2 x 4 WOODS STUDS : GWB ONE SIDE ONLY		
1C	INTERIOR PARTITION OR SMOKE PARTITION (STP)** 2 x 6 WOODS STUDS W/ 3" MINERAL WOOL INSULATION		
2	1 HOUR FIRE BARRIER 1 HOUR RATED 2X6 STUDS	5/8" PROPRIETARY TYPE 'C' GWB 1/2" RESILIENT CHANNELS 3" MINERAL WOOL INSULATION 2x6 WOOD STUDS (SEE STRUCTURAL DWGS FOR SPACING)	
2A	1 HOUR FIRE BARRIER 2 x 6 WOODS STUDS : NO INSULATION OR RESILIENT CHANNEL		
3	1 HOUR FIRE PARTITION OR SMOKE TIGHT PARTITION (STP)** 1 HOUR RATED 2X6 STUDS	5/8" PROPRIETARY TYPE 'C' GWB 1/2" RESILIENT CHANNELS 3" MINERAL WOOL INSULATION 2x6 WOOD STUDS (SEE STRUCTURAL DWGS FOR SPACING)	
4	PLUMBING PARTITION @ BATH SHOWER 1 HOUR RATED	UL DESIGN NO. U311, GA DESIGN NO. WP3241 STC 50-54	
4A	1 HOUR RATED	1/2" CEMENT BOARD @ SHOWER/ BATHTUBS FOR ENTIRE WALL WHEN APPLICABLE COORDINATE WITH FLOOR PLANS 5/8" PROPRIETARY TYPE 'C' GWB 1/2" RESILIENT CHANNELS 3" MINERAL FIBER INSULATION 2x6 WOOD STUDS (SEE STRUCTURAL DWGS FOR SPACING)	
5	PLUMBING PARTITION @ BATH/SHOWER (NON LOAD BEARING) NON-FIRE RATED	(1) LAYER 5/8" GWB 2x4 WOOD STUDS REFER TO STRUCTURAL DWGS FOR SPACING (1) LAYER 5/8" GWB 1/2" CEMENT BOARD @ SHOWER/ BATHTUBS FOR ENTIRE WALL WHEN APPLICABLE COORDINATE WITH FLOOR PLANS	
5A	PLUMBING PARTITION SIMILAR TO 5 BUT WITH 2 x 4 WOODS STUDS AND CEMENT BOARD ONE SIDE ONLY		
5B	PLUMBING PARTITION SAME AS 5 BUT WITH 2 x 6 WOODS STUDS		
6	2 HOUR SHAFT WALL (NON LOAD BEARING) 2 HOUR RATING	UL DESIGN NO. U436, GA DESIGN NO. WP7095 STC 45-49	
6A	2 HOUR RATING	1/2" CEMENT BOARD @ SHOWER/ BATHTUBS COORDINATE WITH FLOOR PLANS FACE LAYER 1/2" PROPRIETARY TYPE 'C' GWB APPLIED PARALLEL TO STUDS BASE LAYER 1/2" PROPRIETARY TYPE 'C' GWB APPLIED PARALLEL TO STUDS 2 1/2" C-H TYPE STEEL STUDS 1 3/8" MINERAL FIBER INSULATION 1" PROPRIETARY GYPSUM LINER PANELS	
7	RATED CMU WALL W/ FURRING (LOAD BEARING) 2 HOUR RATING	UL DESIGN NO. U805	
7A	RATED CMU WALL WITH FURRING 2 x 4 WOOD STUDS PERPENDICULAR TO WALL @ 16" O.C. NO INSULATION	8" CMU WALL SEE STRUCTURAL DWGS. 2x4 WOOD STUDS PERPENDICULAR TO WALL @ 16" O.C. 5/8" GWB 3" SOUND ATTENUATION FIBER BLANKETS	
7B	RATED CMU WALL W/O FURRING (LOAD BEARING) 2 HOUR RATING		
8	INTERIOR PARTITION (LOAD BEARING) 2 HOUR FIRE RATED	UL DESIGN NO. U301	
8A	2 HOUR FIRE BARRIER 2 HOUR RATED 2X6 STUDS	(2) LAYERS 5/8" PROPRIETARY TYPE 'C' GWB 2x4 WOOD STUDS (SEE STRUCTURAL DWGS FOR SPACING) (2) LAYERS 5/8" PROPRIETARY TYPE 'C' GWB	
9	2 HOUR FIRE BARRIER 2 HOUR RATED 2X6 STUDS	UL DESIGN NO. U334 STC 65	
9A	2 HOUR FIRE BARRIER	(2) LAYERS OF 5/8" PROPRIETARY TYPE 'C' GWB FIBERGLASS INSULATION 2x4 WOOD STUDS (SEE STRUCTURAL DWGS FOR SPACING) 1/2" RESILIENT CHANNELS (2) LAYERS OF 5/8" PROPRIETARY TYPE 'C' GWB	
10	2HR FIRE WALL GA FILE NUMBER ASW1000 UL DESIGN NO. #U336	5/8" GWB 3" MINERAL FIBER 2" METAL 'H' STUDS WITH ALUMINUM ANGLE, 1/8" THICK ATTACHMENT CLIPS, 2" WIRE WITH 2" AND 2 1/4" LEGS 7/16" FIRE RETARDANT SHEATHING 1" AIR SPACE (2) LAYERS OF 1" x 24" PROPRIETARY TYPE 'X' GYPSUM LINER PANELS: PROTRUSION FIT INTO 2" METAL 'H' STUDS, PROVIDE ALUMINUM CLIP ANGLE SECURED WITH TYPE 'S' SCREWS TO 'H' STUDS AND WITH TYPE 'W' SCREWS TO WOOD FRAMING 2x6 WOOD STUDS SPACED @ 24" MAX. O.C.	

teamwork\bimserv-k2a\1211\_composite.1/8 FLOOR PLAN - 2B Monday, January 9, 2012 3:57 PM



1 SECOND FLOOR PLAN - 2B  
SCALE: 1/8" = 1'-0"

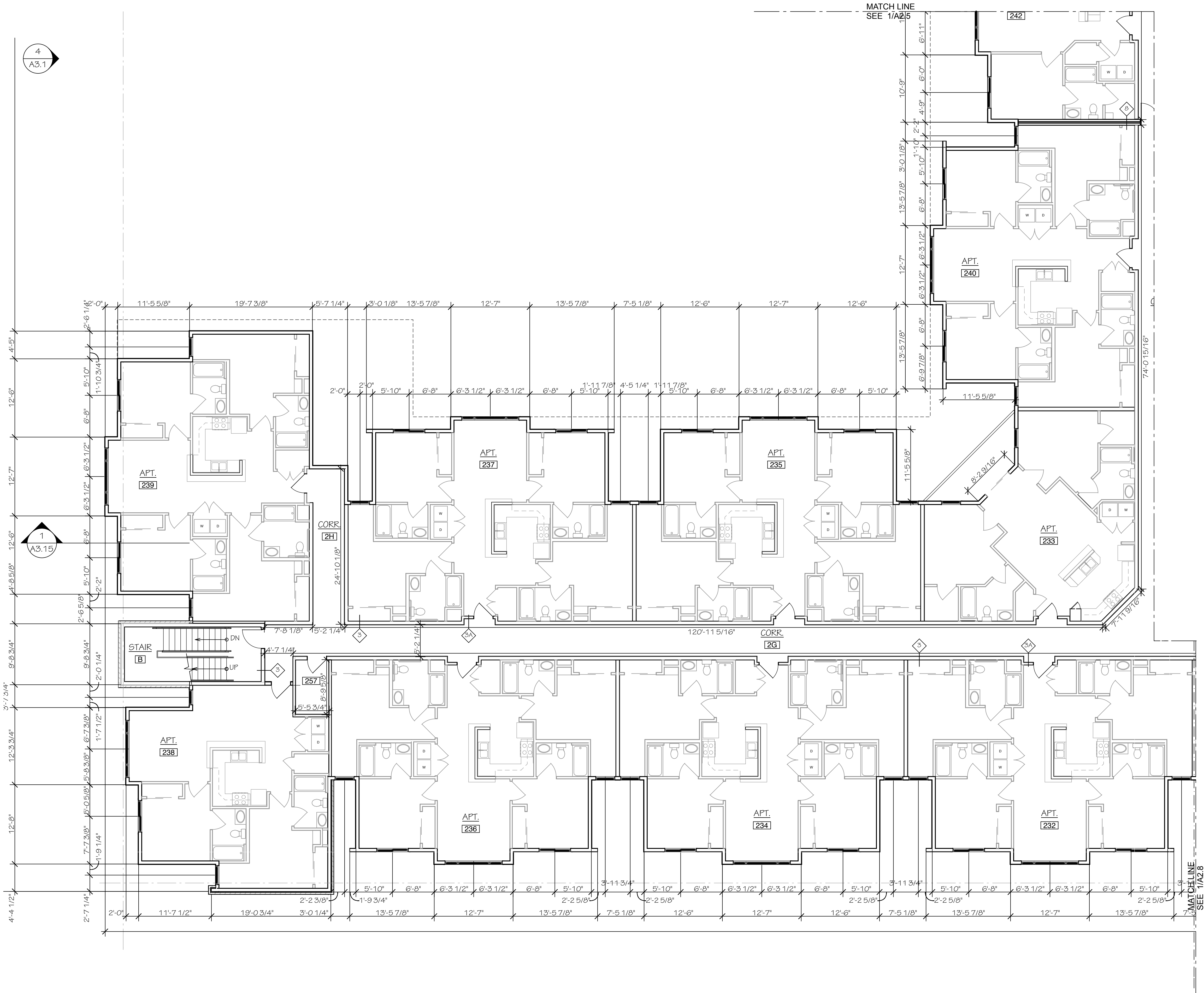
## INTERIOR PARTITION TYPES

- 1 INTERIOR PARTITION  
2x4 NON-FIRE RATED  
5/8" GWB  
2x4 WOOD STUDS (SEE STRUCTURAL DWGS FOR SPACING)
- 2 1 HOUR FIRE BARRIER  
1 HOUR RATED  
2x6 STUDS  
UL DESIGN NO. U311, GA DESIGN NO. WP3241  
5/8" PROPRIETARY TYPE 'C' GWB  
1/2" RESILIENT CHANNELS  
3" MINERAL WOOL INSULATION  
2x6 WOOD STUDS (SEE STRUCTURAL DWGS FOR SPACING)
- 3 1 HOUR FIRE PARTITION OR SMOKE TIGHT PARTITION (STP)\*\*  
1 HOUR RATED  
2x6 STUDS  
UL DESIGN NO. U311, GA DESIGN NO. WP3241  
5/8" PROPRIETARY TYPE 'C' GWB  
1/2" RESILIENT CHANNELS  
3" MINERAL WOOL INSULATION  
2x6 WOOD STUDS (SEE STRUCTURAL DWGS FOR SPACING)
- 4 PLUMBING PARTITION @ BATH SHOWER  
1 HOUR RATED  
UL DESIGN NO. U311, GA DESIGN NO. WP3241  
1/2" CEMENT BOARD @ SHOWER/BATH TUBS FOR ENTIRE WALL WHEN APPLICABLE. COORDINATE WITH FLOOR PLANS  
5/8" PROPRIETARY TYPE 'X' GWB  
1/2" RESILIENT CHANNELS  
3" MINERAL FIBER INSULATION  
2x6 WOOD STUDS (SEE STRUCTURAL DWGS FOR SPACING)
- 5 PLUMBING PARTITION @ BATH/SHOWER (NON LOAD BEARING)  
NON-FIRE RATED  
1) LAYER 5/8" GWB  
2x4 WOOD STUDS REFER TO STRUCTURAL DWGS FOR SPACING  
1) LAYER 5/8" GWB  
1/2" CEMENT BOARD @ SHOWER/BATH TUBS FOR ENTIRE WALL WHEN APPLICABLE. COORDINATE WITH FLOOR PLANS
- 6 PLUMBING PARTITION  
SIMILAR TO 5 BUT WITH 2 x 4 WOODS STUDS AND CEMENT BOARD ONE SIDE ONLY
- 7 PLUMBING PARTITION  
SAME AS 5 BUT WITH 2 x 6 WOODS STUDS
- 8 2 HOUR SHAFT WALL (NON LOAD BEARING)  
2 HOUR RATING  
UL DESIGN NO. U436, GA DESIGN NO. WP7095  
5/8" GWB  
1/2" CEMENT BOARD @ SHOWER/BATH TUBS COORDINATE WITH FLOOR PLANS  
FACE LAYER 1/2" PROPRIETARY TYPE 'C' GWB APPLIED PARALLEL TO STUDS  
BASE LAYER 1/2" PROPRIETARY TYPE 'C' GWB APPLIED PARALLEL TO STUDS  
2 1/2" C-H TYPE STEEL STUDS  
1 3/8" MINERAL FIBER INSULATION  
1" PROPRIETARY GYPSUM LINER PANELS
- 9 RATED CMU WALL W/ FURRING (LOAD BEARING)  
2 HOUR RATING  
UL DESIGN NO. U805  
8" CMU WALL SEE STRUCTURAL DWGS  
2x4 WOOD STUDS PERPENDICULAR TO WALL @ 16" O.C.  
5/8" GWB  
3" SOUND ATTENUATION FIRE BLANKETS
- 10 RATED CMU WALL WITH FURRING  
2x4 WOOD STUDS PERPENDICULAR TO WALL @ 16" O.C.  
NO INSULATION
- 11 RATED CMU WALL W/O FURRING (LOAD BEARING)  
2 HOUR RATING
- 12 INTERIOR PARTITION (LOAD BEARING)  
2 HOUR FIRE RATED  
UL DESIGN NO. U301  
(2) LAYERS 5/8" PROPRIETARY TYPE 'X' GWB  
2x4 WOOD STUDS (SEE STRUCTURAL DWGS FOR SPACING)  
(2) LAYERS 5/8" PROPRIETARY TYPE 'X' GWB
- 13 2 HOUR FIRE BARRIER  
2 HOUR RATED  
2x6 STUDS  
UL DESIGN NO. U334  
5/8" GWB  
(2) LAYERS OF 5/8" PROPRIETARY TYPE 'C' GWB  
FIBERGLASS INSULATION  
2x4 WOOD STUDS (SEE STRUCTURAL DWGS FOR SPACING)  
1/2" RESILIENT CHANNELS  
(2) LAYERS OF 5/8" PROPRIETARY TYPE 'C' GWB
- 14 2 HR. FIRE WALL  
GA FILE NUMBER ASW1000  
UL DESIGN NO. #U336  
5/8" GWB  
3" MINERAL FIBER  
2" METAL 'H' STUDS WITH ALUMINUM ANGLE .063" THICK ATTACHMENT CLIPS, 2" WIDE WITH 2" AND 2 1/4" LEGS  
7/16" FIRE RETARDANT SHEATHING  
1" AIR SPACE  
(2) LAYERS OF 1" x 24" PROPRIETARY TYPE 'X' GYPSUM LINER PANELS, PROTRUSION FIT INTO 2" METAL 'H' STUDS  
PROVIDE ALUMINUM CLIP ANGLES SECURED WITH TYPE 'S' SCREWS TO 'H' STUDS AND WITH TYPE 'W' SCREWS TO WOOD FRAMING  
2x6 WOOD STUDS SPACED @ 24" MAX. O.C.

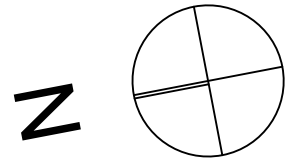
Date	01/10/12
Job	11211
Drawn	
Revision	Date
11211_composite [bimserv-k2a]	

## 01/10/12 - DESIGN REVIEW APPLICATION

teamwork\blmserv-k2a\11211\_composite.1/8 FLOOR PLAN - 2C.Monday, January 9, 2012 3:57 PM



1 SECOND FLOOR PLAN - 2C  
SCALE: 1/8" = 1'-0"



## INTERIOR PARTITION TYPES

- 1 INTERIOR PARTITION  
2x4 NON-FIRE RATED  
5/8" GWB  
2x4 WOOD STUDS (SEE STRUCTURAL DWGS FOR SPACING)
- 1A INTERIOR PARTITION  
2 x 4 WOODS STUDS W/ 3" MINERAL WOOL INSULATION
- 1B INTERIOR PARTITION  
2 x 4 WOODS STUDS - GWB ONE SIDE ONLY
- 1C INTERIOR PARTITION OR SMOKE PARTITION (STP)\*\*  
2 x 6 WOODS STUDS W/ 3" MINERAL WOOL INSULATION

- 2 1 HOUR FIRE BARRIER  
1 HOUR RATED  
UL DESIGN NO. U311, GA DESIGN NO. WP3241  
2X6 STUDS  
5/8" PROPRIETARY TYPE 'C' GWB  
1/2" RESILIENT CHANNELS  
3" MINERAL WOOL INSULATION  
2x6 WOOD STUDS (SEE STRUCTURAL DWGS FOR SPACING)
- 2A 1 HOUR FIRE BARRIER  
2 x 6 WOODS STUDS - NO INSULATION OR RESILIENT CHANNEL

- 3 1 HOUR FIRE PARTITION OR SMOKE TIGHT PARTITION (STP)\*\*  
1 HOUR RATED  
UL DESIGN NO. U311, GA DESIGN NO. WP3241  
2X6 STUDS  
5/8" PROPRIETARY TYPE 'C' GWB  
1/2" RESILIENT CHANNELS  
3" MINERAL WOOL INSULATION  
2x6 WOOD STUDS (SEE STRUCTURAL DWGS FOR SPACING)

- 4 PLUMBING PARTITION @ BATH SHOWER  
1 HOUR RATED  
UL DESIGN NO. U311, GA DESIGN NO. WP3241  
1/2" CEMENT BOARD @ SHOWER/ BATHTUBS FOR ENTIRE WALL WHEN APPLICABLE COORDINATE WITH FLOOR PLANS  
5/8" PROPRIETARY TYPE 'X' GWB  
1/2" RESILIENT CHANNELS  
2x6 WOOD STUDS (SEE STRUCTURAL DWGS FOR SPACING)

- 5 PLUMBING PARTITION @ BATH/SHOWER (NON LOAD BEARING)  
NON-FIRE RATED  
1) LAYER 5/8" GWB  
2x4 WOOD STUDS REFER TO STRUCTURAL DWGS FOR SPACING  
1) LAYER 5/8" GWB  
1/2" CEMENT BOARD @ SHOWER/ BATHTUBS FOR ENTIRE WALL WHEN APPLICABLE COORDINATE WITH FLOOR PLANS

- 5A PLUMBING PARTITION  
SIMILAR TO 5 BUT WITH 2 x 4 WOODS STUDS AND CEMENT BOARD ONE SIDE ONLY
- 5B PLUMBING PARTITION  
SAME AS 5 BUT WITH 2 x 6 WOODS STUDS

- 6 2 HOUR SHAFT WALL (NON LOAD BEARING)  
2 HOUR RATING  
UL DESIGN NO. U436, GA DESIGN NO. WP7095  
1/2" CEMENT BOARD @ SHOWER/ BATHTUBS COORDINATE WITH FLOOR PLANS  
FACE LAYER 1/2" PROPRIETARY TYPE 'C' GWB APPLIED PARALLEL TO STUDS  
BASE LAYER 1/2" PROPRIETARY TYPE 'C' GWB APPLIED PARALLEL TO STUDS  
2 1/2" C-H TYPE STEEL STUDS  
1 3/8" MINERAL FIBER INSULATION  
1" PROPRIETARY GYPSUM LINER PANELS

- 7 RATED CMU WALL W/ FURRING (LOAD BEARING)  
2 HOUR RATING  
UL DESIGN NO. U805  
8" CMU WALL SEE STRUCTURAL DWGS  
2 x 4 WOOD STUDS PERPENDICULAR TO WALL @ 16" O.C.  
5/8" GWB  
3" SOUND ATTENUATION FIRE BLANKETS

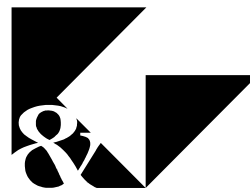
- 7A RATED CMU WALL WITH FURRING  
2 x 4 WOOD STUDS PERPENDICULAR TO WALL @ 16" O.C.  
NO INSULATION
- 7B RATED CMU WALL W/O FURRING (LOAD BEARING)  
2 HOUR RATING

- 8 INTERIOR PARTITION (LOAD BEARING)  
2 HOUR FIRE RATED  
UL DESIGN NO. U301  
(2) LAYERS 5/8" PROPRIETARY TYPE 'X' GWB  
2x4 WOOD STUDS (SEE STRUCTURAL DWGS FOR SPACING)  
(2) LAYERS 5/8" PROPRIETARY TYPE 'X' GWB

- 9 2 HOUR FIRE BARRIER  
2 HOUR RATED  
UL DESIGN NO. U334  
2X6 STUDS  
(2) LAYERS OF 5/8" PROPRIETARY TYPE 'C' GWB  
FIBERGLASS INSULATION  
2x4 WOOD STUDS (SEE STRUCTURAL DWGS FOR SPACING)  
1/2" RESILIENT CHANNELS  
(2) LAYERS OF 5/8" PROPRIETARY TYPE 'C' GWB

- 10 2HR FIRE WALL  
GA FILE NUMBER ASW1000  
UL DESIGN NO. #U336  
5/8" GWB  
3" MINERAL FIBER  
2" METAL 'H' STUDS WITH ALUMINUM ANGLE .063" THICK ATTACHMENT CLIPS 2" WIDE WITH 2" AND 2 1/4" LEGS  
7/16" FIRE RETARDANT SHEATHING  
1" AIR SPACE  
(2) LAYERS OF 1" x 24" PROPRIETARY TYPE 'X' GYPSUM LINER PANELS. FRICION FIT INTO 2" METAL 'H' STUDS. PROVIDE ALUMINUM CLIP ANGLES SECURED WITH TYPE 'S' SCREWS TO 'H' STUDS AND WITH TYPE 'W' SCREWS TO WOOD FRAMING.  
2x6 WOOD STUDS SPACED @ 24" MAX. O.C.

Kitchen & Associates Architectural Services, PA



Architecture  
Engineering  
Planning  
Interior Design

Collingswood, NJ  
756 Haddon Avenue - 08108  
Tel: 856.854.1880

Philadelphia, PA  
8 Penn Center  
1628 John F Kennedy Blvd- 19103  
Suite 1600  
Tel: 215.985.0111

On the Web  
www.kitchenandassociates.com

Date 01/10/12  
Job 11211  
Drawn  
Revision Date

11211\_composite [blmserv-k2a]



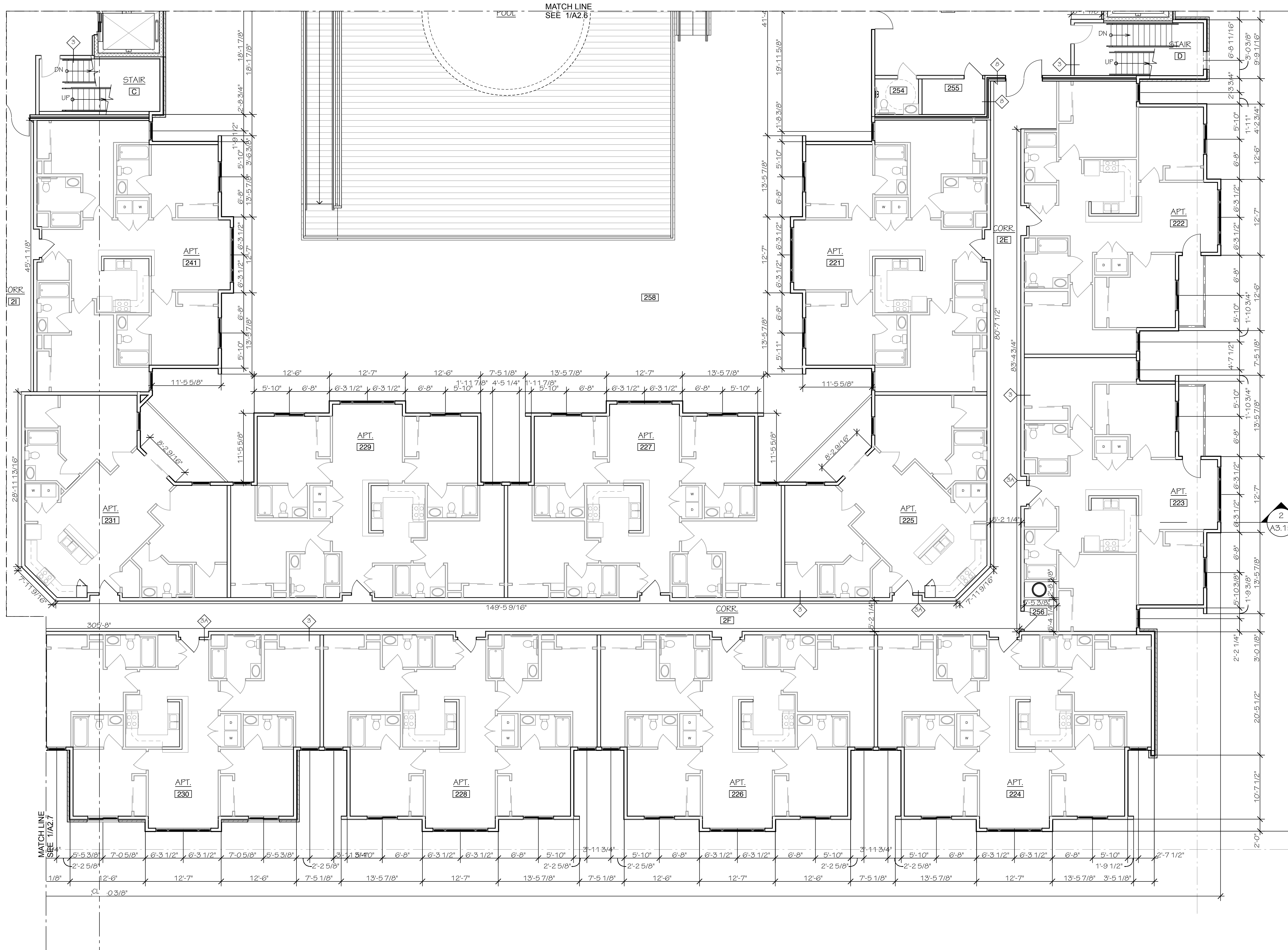
01/10/12 - DESIGN REVIEW APPLICATION

RIVER EDGE APARTMENTS

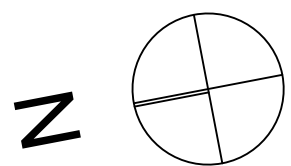
1004 W. Royal Boulevard  
Boise, ID 83706

A2.7

1/8 FLOOR PLAN - 2C



1 SECOND FLOOR PLAN - 2D  
SCALE: 1/8" = 1'-0"



## INTERIOR PARTITION TYPES

- 1 INTERIOR PARTITION  
2X4 NON-FIRE RATED  
5/8" GWB
- 1A INTERIOR PARTITION  
2 x 4 WOOD STUDS W/ 3" MINERAL WOOL INSULATION
- 1B INTERIOR PARTITION  
2 x 4 WOOD STUDS; GWB ONE SIDE ONLY
- 1C INTERIOR PARTITION OR SMOKE PARTITION (STP)\*\*  
2 x 6 WOOD STUDS W/ 3" MINERAL WOOL INSULATION
- 2 1 HOUR FIRE BARRIER  
1 HOUR RATED  
2X6 STUDS  
UL DESIGN NO. U311, GA DESIGN NO. WP3241  
STC 50-54
- 2A 1 HOUR FIRE BARRIER  
2 x 6 WOOD STUDS; NO INSULATION OR RESILIENT CHANNEL
- 2B 1 HOUR FIRE PARTITION OR SMOKE TIGHT PARTITION (STP)\*\*  
1 HOUR RATED  
2X6 STUDS  
UL DESIGN NO. U311, GA DESIGN NO. WP3241  
STC 50-54
- 2C 1 HOUR FIRE PARTITION OR SMOKE TIGHT PARTITION (STP)\*\*  
1 HOUR RATED  
2X6 STUDS  
UL DESIGN NO. U311, GA DESIGN NO. WP3241  
STC 50-54
- 3 PLUMBING PARTITION @ BATH SHOWER  
1 HOUR RATED  
UL DESIGN NO. U311, GA DESIGN NO. WP3241  
STC 50-54
- 3A PLUMBING PARTITION @ BATH/SHOWER (NON LOAD BEARING)  
NON-FIRE RATED  
UL DESIGN NO. U311, GA DESIGN NO. WP3241  
STC 50-54
- 3B PLUMBING PARTITION  
SIMILAR TO 3A BUT WITH 2 x 4 WOOD STUDS AND CEMENT BOARD ONE SIDE ONLY
- 3C PLUMBING PARTITION  
SAME AS 3B BUT WITH 2 x 6 WOOD STUDS
- 4 2 HOUR SHAFT WALL (NON LOAD BEARING)  
2 HOUR RATING  
UL DESIGN NO. U436, GA DESIGN NO. WP7095  
STC 45-49
- 4A 2 HOUR CMU WALL W/ FURRING (LOAD BEARING)  
2 HOUR RATING  
UL DESIGN NO. U805
- 4B RATED CMU WALL WITH FURRING  
2 x 4 WOOD STUDS PERPENDICULAR TO WALL @ 16" O.C.  
NO INSULATION
- 4C RATED CMU WALL W/O FURRING (LOAD BEARING)  
2 HOUR RATING
- 5 INTERIOR PARTITION (LOAD BEARING)  
2 HOUR FIRE RATED  
UL DESIGN NO. U301
- 5A 2 HOUR FIRE BARRIER  
2 HOUR RATED  
2X6 STUDS  
UL DESIGN NO. U334  
STC 62
- 5B 2 HOUR FIRE WALL  
GA FILE NUMBER ASH1000  
UL DESIGN NO. #U336

