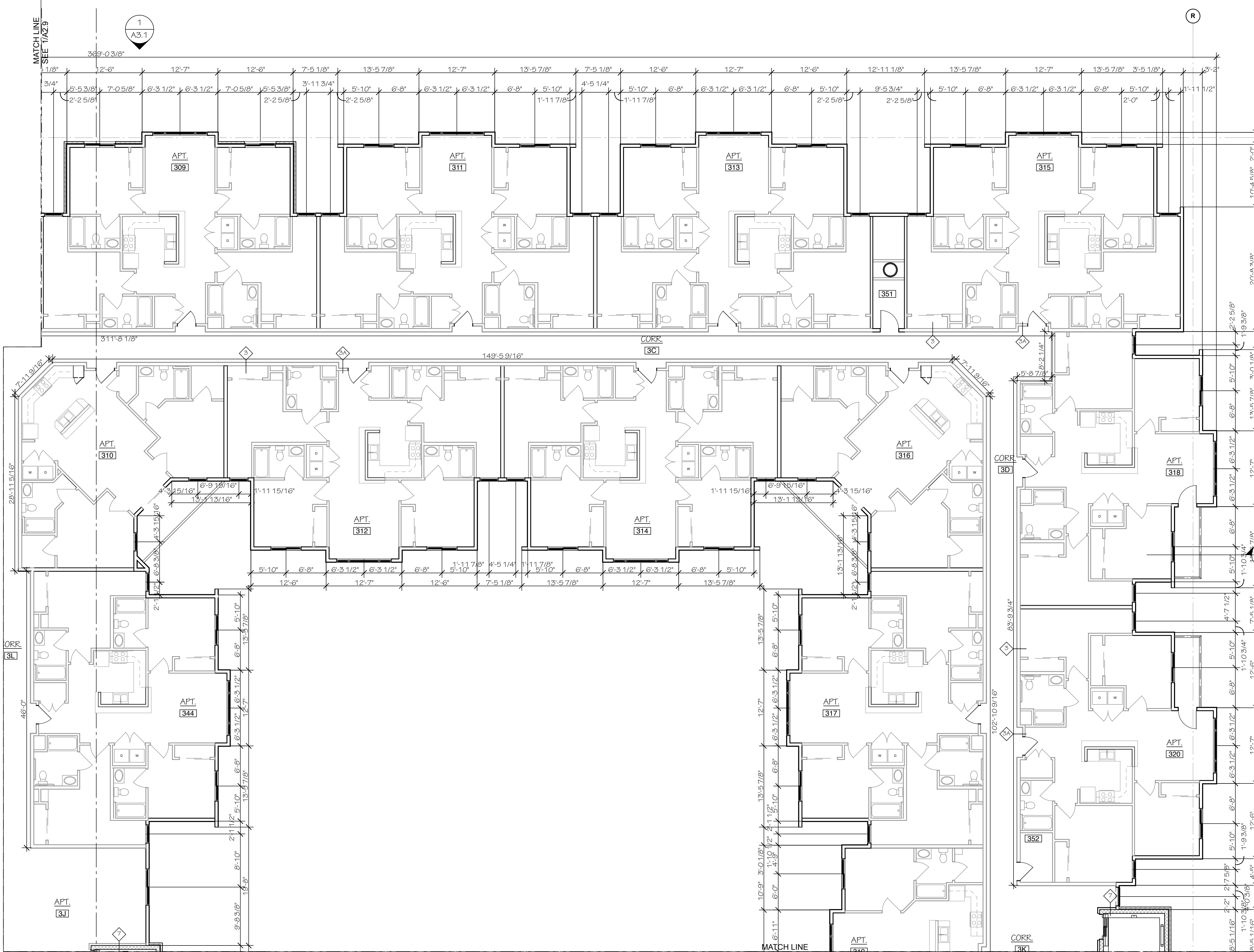


teamwork\bimserv-k2a\11211\_composite.118 TYPICAL FLOOR PLAN - 3-5B Monday, January 9, 2012 3:57 PM



### INTERIOR PARTITION TYPES

- 1 INTERIOR PARTITION  
2X4 NON-FIRE RATED  
5/8" GWB
- 2 INTERIOR PARTITION  
2 x 4 WOOD STUDS W/ 3" MINERAL WOOL INSULATION  
INTERIOR PARTITION  
2 x 4 WOOD STUDS; GWB ONE SIDE ONLY  
INTERIOR PARTITION OR SMOKE PARTITION (STP)\*\*  
2 x 6 WOOD STUDS W/ 3" MINERAL WOOL INSULATION

- 3 1 HOUR FIRE BARRIER  
1 HOUR RATED  
2X6 STUDS  
UL DESIGN NO. U311, GA DESIGN NO. WFS241  
5TC 50-54
- 4 PLUMBING PARTITION @ BATH SHOWER  
1 HOUR RATED  
UL DESIGN NO. U511, GA DESIGN NO. WFS241  
5TC 50-54

- 5 1 HOUR FIRE PARTITION OR SMOKE TIGHT PARTITION (STP)\*\*  
1 HOUR RATED  
2X6 STUDS  
UL DESIGN NO. U311, GA DESIGN NO. WFS241  
5TC 50-54
- 6 PLUMBING PARTITION @ BATH/SHOWER (NON LOAD BEARING)  
NON-FIRE RATED  
UL DESIGN NO. U311, GA DESIGN NO. WFS241  
5TC 50-54

- 7 PLUMBING PARTITION  
SIMILAR TO 6 BUT WITH 2 x 4 WOOD STUDS AND CEMENT BOARD ONE SIDE ONLY
- 8 PLUMBING PARTITION  
SAME AS 6 BUT WITH 2 x 6 WOOD STUDS

- 9 2 HOUR SHAFT WALL (NON LOAD BEARING)  
2 HOUR RATING  
UL DESIGN NO. U436, GA DESIGN NO. W7099  
5TC 45-49
- 10 2 HOUR CMU WALL W/ FURRING (LOAD BEARING)  
2 HOUR RATING  
UL DESIGN NO. U805

- 11 2 HOUR CMU WALL WITH FURRING  
2 X 4 WOOD STUDS PERPENDICULAR TO WALL @ 16" O.C.  
NO INSULATION
- 12 2 HOUR CMU WALL W/O FURRING (LOAD BEARING)  
2 HOUR RATING

- 13 INTERIOR PARTITION (LOAD BEARING)  
2 HOUR FIRE RATED  
UL DESIGN NO. U301
- 14 2 HOUR FIRE BARRIER  
2 HOUR RATED  
2X6 STUDS  
UL DESIGN NO. U334  
5TC 62

- 15 2 HOUR FIRE WALL  
GA FILE NUMBER ASW1000  
UL DESIGN NO. #U336

01/10/12 - DESIGN REVIEW APPLICATION

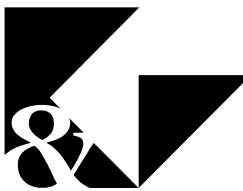
### RIVER EDGE APARTMENTS

1004 W. Royal Boulevard  
Boise, ID 83706

A2.10

1/8 TYPICAL FLOOR  
PLAN - 3-5B

Kitchen & Associates Architectural Services, PA



Architecture  
Engineering  
Planning  
Interior Design

Collingswood, NJ  
756 Haddon Avenue - 08108  
Tel: 856.854.1880

Philadelphia, PA  
8 Penn Center  
1628 John F Kennedy Blvd- 19103  
Suite 1600  
Tel: 215.985.0111

On the Web  
www.kitchenandassociates.com

Date 01/10/12

Job 11211

Drawn

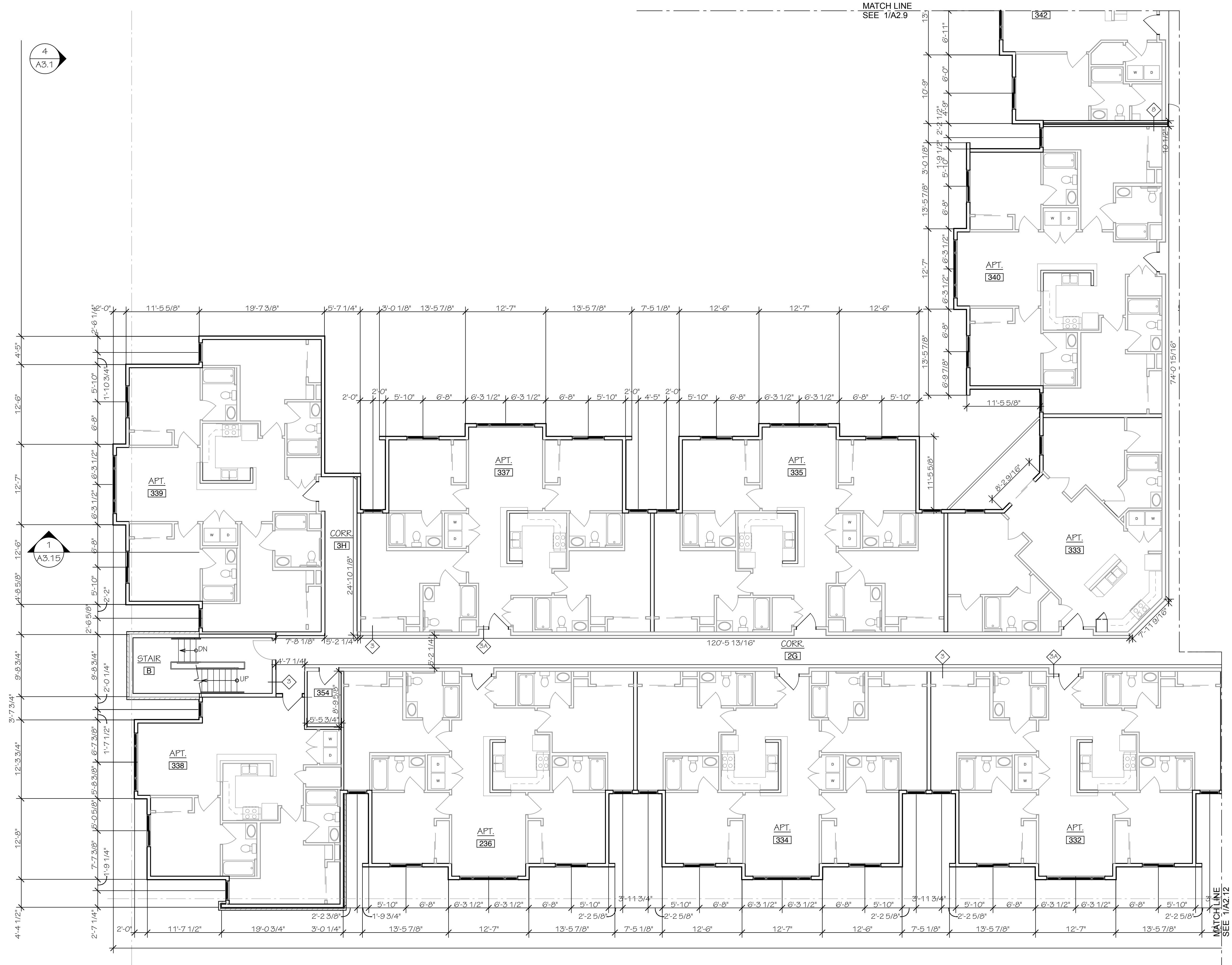
Revision Date

11211\_composite [bimserv-k2a]





teamwork\bimserv-k2ar\11211\_composite.118 TYPICAL FLOOR PLAN - 3-5C, Monday, January 9, 2012 3:57 PM



1 TYPICAL FLOOR PLAN 3-5C  
SCALE: 1/8" = 1'-0"

INTERIOR PARTITION TYPES

- 1 INTERIOR PARTITION  
2x4 NON-FIRE RATED  
5/8" GWB  
2x4 WOOD STUDS (SEE STRUCTURAL DWGS FOR SPACING)
- 1A INTERIOR PARTITION  
2 x 4 WOODS STUDS W/ 3" MINERAL WOOL INSULATION  
INTERIOR PARTITION  
2 x 4 WOODS STUDS - GWB ONE SIDE ONLY  
INTERIOR PARTITION OR SMOKE PARTITION (STP)\*\*  
2 x 6 WOODS STUDS W/ 3" MINERAL WOOL INSULATION
- 2 1 HOUR FIRE BARRIER  
1 HOUR RATED  
UL DESIGN NO. U311, GA DESIGN NO. WP3241  
2X6 STUDS  
5/8" PROPRIETARY TYPE 'C' GWB  
1/2" RESILIENT CHANNELS  
3" MINERAL WOOL INSULATION  
2X6 WOOD STUDS (SEE STRUCTURAL DWGS FOR SPACING)
- 2A 1 HOUR FIRE BARRIER  
2 x 6 WOODS STUDS - NO INSULATION OR RESILIENT CHANNEL
- 3 1 HOUR FIRE PARTITION OR SMOKE TIGHT PARTITION (STP)\*\*  
1 HOUR RATED  
UL DESIGN NO. U311, GA DESIGN NO. WP3241  
2X6 STUDS  
5/8" PROPRIETARY TYPE 'C' GWB  
1/2" RESILIENT CHANNELS  
3" MINERAL WOOL INSULATION  
2X6 WOOD STUDS (SEE STRUCTURAL DWGS FOR SPACING)
- 4 PLUMBING PARTITION @ BATH SHOWER  
1 HOUR RATED  
UL DESIGN NO. U311, GA DESIGN NO. WP3241  
1/2" CEMENT BOARD @ SHOWER/ BATHTUBS FOR ENTIRE WALL WHEN APPLICABLE COORDINATE WITH FLOOR PLANS  
5/8" PROPRIETARY TYPE 'X' GWB  
1/2" RESILIENT CHANNELS  
3" MINERAL FIBER INSULATION  
2X6 WOOD STUDS (SEE STRUCTURAL DWGS FOR SPACING)
- 5 PLUMBING PARTITION @ BATH/SHOWER (NON LOAD BEARING)  
NON-FIRE RATED  
(1) LAYER 5/8" GWB  
2x4 WOOD STUDS REFER TO STRUCTURAL DWGS FOR SPACING  
(1) LAYER 5/8" GWB  
1/2" CEMENT BOARD @ SHOWER/ BATHTUBS FOR ENTIRE WALL WHEN APPLICABLE COORDINATE WITH FLOOR PLANS
- 5A PLUMBING PARTITION  
SIMILAR TO 5 BUT WITH 2 x 4 WOODS STUDS AND CEMENT BOARD ONE SIDE ONLY
- 5B PLUMBING PARTITION  
SAME AS 5 BUT WITH 2 x 6 WOODS STUDS
- 6 2 HOUR SHAFT WALL (NON LOAD BEARING)  
2 HOUR RATING  
UL DESIGN NO. U436, GA DESIGN NO. WP7095  
1/2" CEMENT BOARD @ SHOWER/ BATHTUBS COORDINATE WITH FLOOR PLANS  
FACE LAYER 1/2" PROPRIETARY TYPE 'C' GWB APPLIED PARALLEL TO STUDS  
BASE LAYER 1/2" PROPRIETARY TYPE 'C' GWB APPLIED PARALLEL TO STUDS  
2 1/2" C-H TYPE STEEL STUDS  
1 3/8" MINERAL FIBER INSULATION  
1" PROPRIETARY GYPSUM LINER PANELS
- 7 RATED CMU WALL W/ FURRING (LOAD BEARING)  
2 HOUR RATING  
UL DESIGN NO. U805  
8" CMU WALL SEE STRUCTURAL DWGS  
2 x 4 WOOD STUDS PERPENDICULAR TO WALL @ 16" O.C.  
5/8" GWB  
3" SOUND ATTENUATION FIRE BLANKETS
- 7A RATED CMU WALL WITH FURRING  
2 x 4 WOOD STUDS PERPENDICULAR TO WALL @ 16" O.C.  
NO INSULATION
- 7B RATED CMU WALL W/O FURRING (LOAD BEARING)  
2 HOUR RATING
- 8 INTERIOR PARTITION (LOAD BEARING)  
2 HOUR FIRE RATED  
UL DESIGN NO. U301  
(2) LAYERS 5/8" PROPRIETARY TYPE 'X' GWB  
2x4 WOOD STUDS (SEE STRUCTURAL DWGS FOR SPACING)  
(2) LAYERS 5/8" PROPRIETARY TYPE 'X' GWB
- 9 2 HOUR FIRE BARRIER  
2 HOUR RATED  
UL DESIGN NO. U334  
2X6 STUDS  
(2) LAYERS OF 5/8" PROPRIETARY TYPE 'C' GWB  
FIBERGLASS INSULATION  
2x4 WOOD STUDS (SEE STRUCTURAL DWGS FOR SPACING)  
1/2" RESILIENT CHANNELS  
(2) LAYERS OF 5/8" PROPRIETARY TYPE 'C' GWB
- 10 2HR FIRE WALL  
GA FILE NUMBER ASW1000  
UL DESIGN NO. #U336  
5/8" GWB  
3" MINERAL FIBER  
2" METAL 'H' STUDS WITH ALUMINUM ANGLE .063" THICK ATTACHMENT CLIPS 2" WIDE WITH 2" AND 2 1/4" LEGS  
7/16" FIRE RETARDANT SHEATHING  
1" AIR SPACE  
(2) LAYERS OF 1" x 24" PROPRIETARY TYPE 'X' GYPSUM LINER PANELS. FRUCTION FIT INTO 2" METAL 'H' STUDS. PROVIDE ALUMINUM CLIP ANGLES SECURED WITH TYPE 'S' SCREWS TO 'H' STUDS AND WITH TYPE 'W' SCREWS TO WOOD FRAMING  
2x6 WOOD STUDS SPACED @ 24" MAX. O.C.

Date	01/10/12
Job	11211
Drawn	
Revision	Date
11211_composite [bimserv-k2a]	



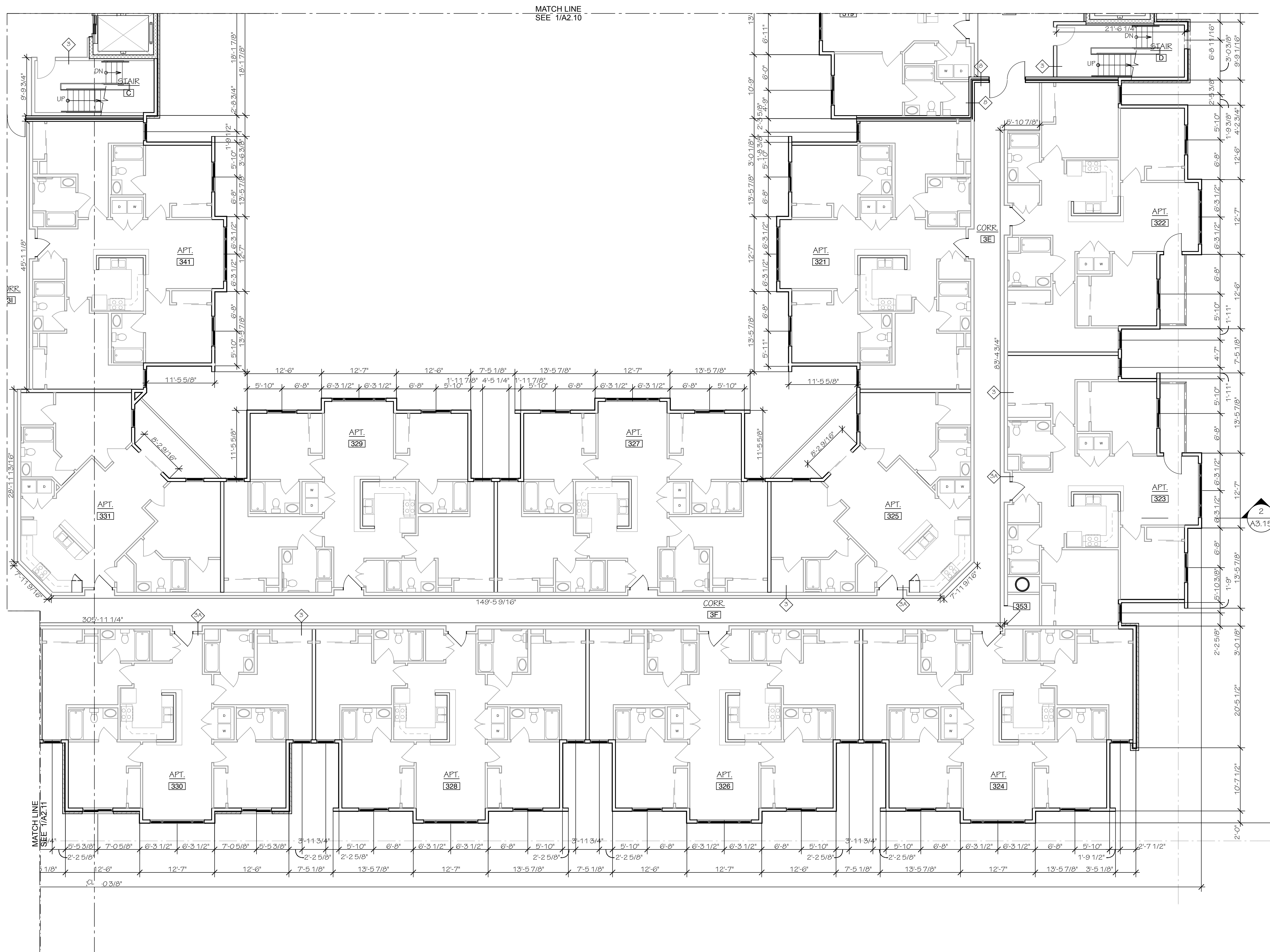
01/10/12 - DESIGN REVIEW APPLICATION

RIVER EDGE APARTMENTS  
1004 W. Royal Boulevard  
Boise, ID 83706

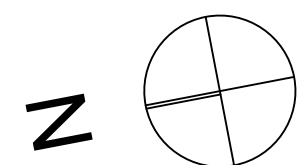
A2.11

1/8 TYPICAL FLOOR  
PLAN - 3-5C

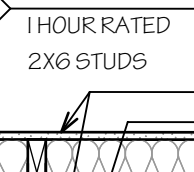
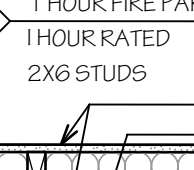
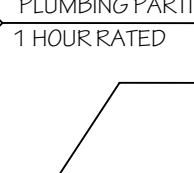
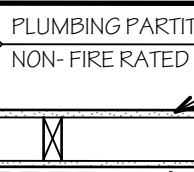
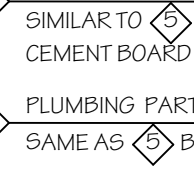
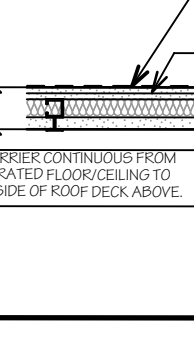
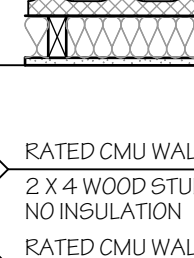
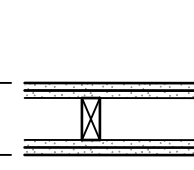
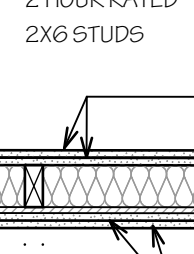
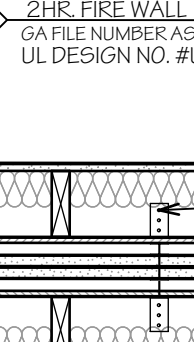




1 TYPICAL FLOOR PLAN 3-5D  
SCALE: 1/8" = 1'-0"

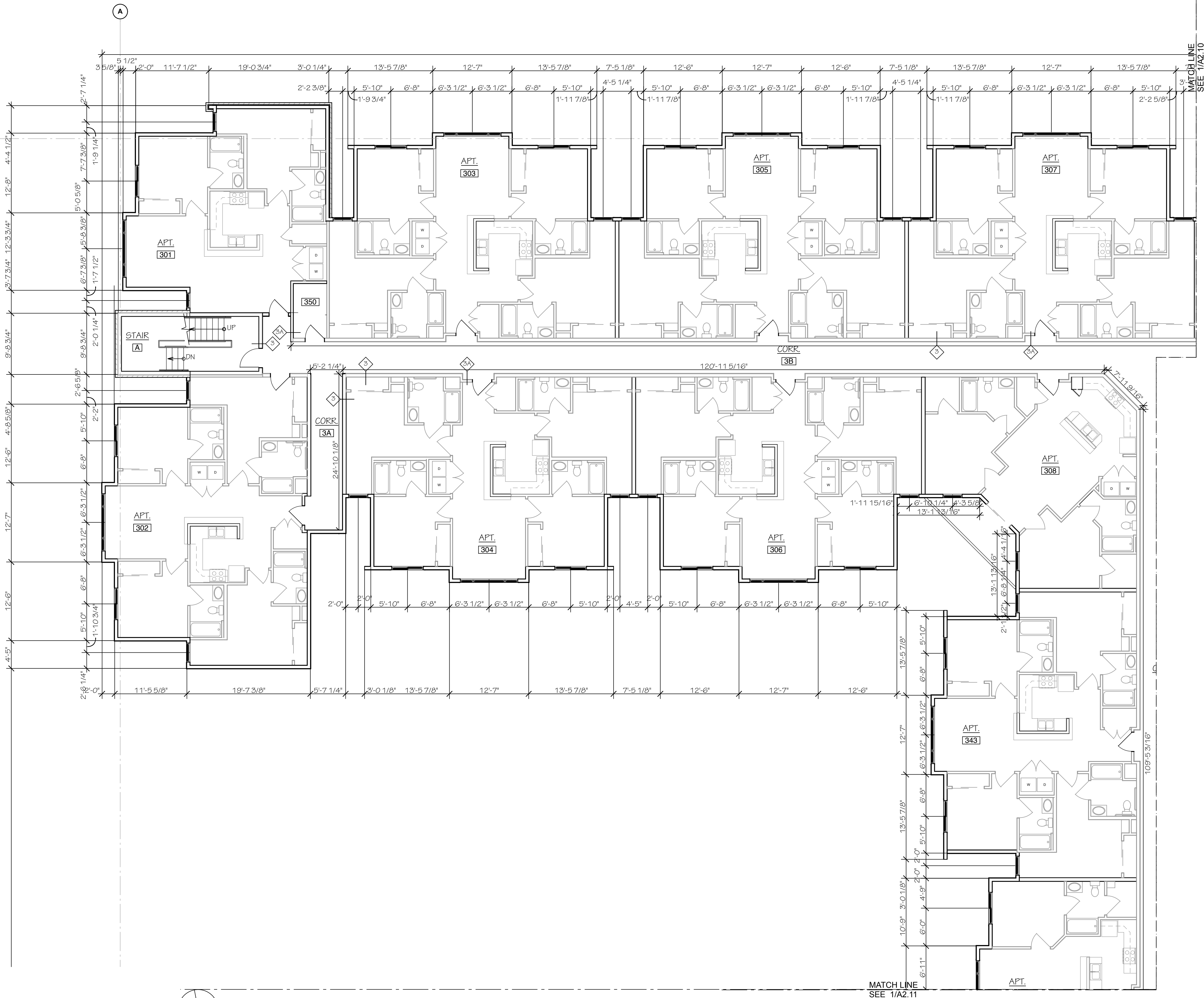


## INTERIOR PARTITION TYPES

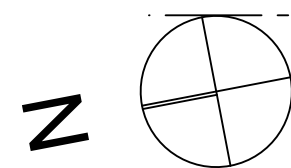
- |   |   |  |
|---|---|--|
| <b>1</b>  | <b>INTERIOR PARTITION</b><br>2x4 NON-FIRE RATED   | UL DESIGN NO. U311, GA DESIGN NO. WP3241<br>STC 50-54  |
|    |   |  |
| <b>1A</b>   | <b>INTERIOR PARTITION</b><br>2 x 4 WOODS STUDS W/ 3" MINERAL WOOL INSULATION                            |  |
| <b>1B</b>   | <b>INTERIOR PARTITION</b><br>2 x 4 WOODS STUDS; GWB ONE SIDE ONLY                                       |  |
| <b>1C</b>   | <b>INTERIOR PARTITION OR SMOKE PARTITION (STP)**</b><br>2 x 6 WOODS STUDS W/ 3" MINERAL WOOL INSULATION |  |
| <b>2</b>  | <b>1 HOUR FIRE BARRIER</b><br>1 HOUR RATED<br>2x6 STUDS   | UL DESIGN NO. U311, GA DESIGN NO. WP3241<br>STC 90-54  |
|    |   |  |
| <b>2A</b>   | <b>1 HOUR FIRE BARRIER</b><br>2 x 6 WOODS STUDS; NO INSULATION OR RESILIENT CHANNEL                     |  |
| <b>3</b>  | <b>1 HOUR FIRE PARTITION OR SMOKE TIGHT PARTITION (STP)**</b><br>1 HOUR RATED<br>2x6 STUDS              | UL DESIGN NO. U311, GA DESIGN NO. WP3241<br>STC 90-54  |
|    |   |  |
| <b>4</b>  | <b>PLUMBING PARTITION @ BATH / SHOWER</b><br>1 HOUR RATED   | UL DESIGN NO. U311, GA DESIGN NO. WP3241<br>STC 50-54  |
|    |   |  |
| <b>5</b>  | <b>PLUMBING PARTITION @ BATH / SHOWER (NON LOAD BEARING)</b><br>NON-FIRE RATED                          | (1) LAYER 5/8" GWB<br>2x4 WOOD STUDS REFER TO STRUCTURAL DWGS FOR SPACING<br>(1) LAYER 5/8" GWB<br>1/2" CEMENT BOARD @ SHOWER/ BATH TUBS FOR ENTIRE WALL WHEN APPLICABLE, COORDINATE WITH FLOOR PLANS  |
|    |   |  |
| <b>5A</b>   | <b>PLUMBING PARTITION</b><br>SIMILAR TO 5 BUT WITH 2 x 4 WOODS STUDS AND CEMENT BOARD ONE SIDE ONLY     |  |
| <b>5B</b>   | <b>PLUMBING PARTITION</b><br>SAME AS 5 BUT WITH 2 x 6 WOODS STUDS                                       |  |
| <b>6</b>  | <b>2 HOUR SHAFT WALL (NON LOAD BEARING)</b><br>2 HOUR RATING  | UL DESIGN NO. U436, GA DESIGN NO. WP7095<br>STC 45-48  |
|  |   |  |
| <b>7</b>  | <b>RATED CMU WALL W/ FURRING (LOAD BEARING)</b><br>2 HOUR RATING  | UL DESIGN NO. U909   |
|  |   |  |
| <b>7A</b>   | <b>RATED CMU WALL WITH FURRING</b><br>2 X 4 WOOD STUDS PERPENDICULAR TO WALL @ 16" O.C.                 |  |
| <b>7B</b>   | <b>RATED CMU WALL W/O FURRING (LOAD BEARING)</b><br>2 HOUR RATING                                       |  |
| <b>8</b>  | <b>INTERIOR PARTITION (LOAD BEARING)</b><br>2 HOUR FIRE RATED   | UL DESIGN NO. U301   |
|  |   |  |
| <b>9</b>  | <b>2 HOUR FIRE BARRIER</b><br>2 HOUR RATED<br>2X6 STUDS   | UL DESIGN NO. U334<br>STC 62   |
|  |   |  |
| <b>10</b>   | <b>2HR. FIRE WALL</b><br>GA FILE NUMBER ASU1000<br>UL DESIGN NO. #U536                                  | 5/8" GWB<br>3" MINERAL FIBER<br>2" METAL 1/4 STUDS WITH ALUMINUM ANGLE 1/4" THICK ATTACHMENT CLIPS 2" WIDE WITH 2" AND 2 1/4" LEGS<br>7/16" FIRE-RESISTANT SHEATHING<br>1" AIR SPACE<br>(2) LAYERS OF 1" X 24" PROPRIETARY TYPE C GYPSUM LINER PANELS, FRICITION FIT INTO 2" METAL 1/4 STUDS. PROVIDE ALUMINUM C-UP ANGLES SECURED WITH TYPE S SCREWS TO 1/4" STUDS AND WITH TYPE W SCREWS TO 2"WOOD FRAMING<br>2x6 WOOD STUDS SPACED @ 24" MAX O.C. |
|  |   |  |

Date	01/10/12		
Job	11211		
Drawn			
Revision		Date	
11211_composite [bimserv]			





1) TYPICAL FLOOR PLAN 3-5A  
SCALE: 1/8" = 1'-0"



## INTERIOR PARTITION TYPES

- 1 INTERIOR PARTITION**  
2x4 NON-FIRE RATED

43 3/4"

5/8" GWB

2x4 WOOD STUDS (SEE STRUCTURAL DWGS FOR SPACING)

**1A INTERIOR PARTITION**  
2 x 4 WOODS STUDS W/ 3" MINERAL WOOL INSULATION

**1B INTERIOR PARTITION**  
2 x 4 WOODS STUDS; GWB ONE SIDE ONLY

**1C INTERIOR PARTITION OR SMOKE TIGHT PARTITION (STP)\*\***  
2 x 6 WOODS STUDS W/ 3" MINERAL WOOL INSULATION

**2 1 HOUR FIRE BARRIER**  
1 HOUR RATED  
2X6 STUDS

71 1/4"

5/8" PROPRIETARY TYPE "C" GWB

1/2" RESILIENT CHANNELS

3" MINERAL WOOL INSULATION

2x6 WOOD STUDS (SEE STRUCTURAL DWGS. FOR SPACING)

**2A 1 HOUR FIRE BARRIER**  
2 x 6 WOODS STUDS; NO INSULATION OR RESILIENT CHANNEL

**3 1 HOUR FIRE PARTITION OR SMOKE TIGHT PARTITION (STP)\*\***  
1 HOUR RATED  
2X6 STUDS

71 1/4"

5/8" PROPRIETARY TYPE "C" GWB

1/2" RESILIENT CHANNELS

3" MINERAL WOOL INSULATION

2x6 WOOD STUDS (SEE STRUCTURAL DWGS. FOR SPACING)

**4 PLUMBING PARTITION @ BATH SHOWER**  
1 HOUR RATED

71 1/4"

1/2" CEMENT BOARD @ SHOWER/BATHS; COORDINATE WITH FLOOR PLANS

5/8" PROPRIETARY TYPE "X" GWB

1/2" RESILIENT CHANNELS

3" MINERAL FIBER INSULATION

2x6 WOOD STUDS (SEE STRUCTURAL DWGS. FOR SPACING)

**5 PLUMBING PARTITION @ BATH/SHOWER (NON LOAD BEARING)**  
NON-FIRE RATED

43 3/4"

(1) LAYER 5/8" GWB

2x4 WOOD STUDS REFER TO STRUCTURAL DWGS FOR SPACING

(1) LAYER 5/8" GWB

1/2" CEMENT BOARD @ SHOWER/BATHS FOR ENTIRE WALL WHEN APPLICABLE. COORDINATE WITH FLOOR PLANS

**5A PLUMBING PARTITION**  
SIMILAR TO 5 BUT WITH 2 x 4 WOODS STUDS AND CEMENT BOARD ONE SIDE ONLY

**5B PLUMBING PARTITION**  
SAME AS 5 BUT WITH 2 x 6 WOODS STUDS

**6 2 HOUR SHAFT WALL (NON LOAD BEARING)**  
2 HOUR RATING

71 1/4"

1/2" CEMENT BOARD @ SHOWER/BATHS; COORDINATE WITH FLOOR PLANS

5/8" PROPRIETARY TYPE "C" GWB

1/2" RESILIENT CHANNELS

3" MINERAL FIBER INSULATION

2x6 WOOD STUDS (SEE STRUCTURAL DWGS. FOR SPACING)

**6A PLUMBING PARTITION**  
SIMILAR TO 6 BUT WITH 2 x 4 WOODS STUDS AND CEMENT BOARD ONE SIDE ONLY

**6B PLUMBING PARTITION**  
SAME AS 6 BUT WITH 2 x 6 WOODS STUDS

**7 RATED CMU WALL W/ FURRING (LOAD BEARING)**  
2 HOUR RATING

11 3/4"

8" CMU WALL SEE STRUCTURAL DWGS.

2x4 WOOD STUDS PERPENDICULAR TO WALL @ 16" O.C.

5/8" GWB

3" SOUND ATTENUATION FIRE BLANKETS

**7A RATED CMU WALL WITH FURRING**  
2 x 4 WOOD STUDS PERPENDICULAR TO WALL @ 16" O.C.

**7B RATED CMU WALL W/O FURRING (LOAD BEARING)**  
2 HOUR RATING

**8 INTERIOR PARTITION (LOAD BEARING)**  
2 HOUR FIRE RATED

71 1/4"

(2) LAYERS 5/8" PROPRIETARY TYPE "C" GWB

2x4 WOOD STUDS (SEE STRUCTURAL DWGS. FOR SPACING)

(2) LAYERS 5/8" PROPRIETARY TYPE "C" GWB

**9 2 HOUR FIRE BARRIER**  
2 HOUR RATED  
2X6 STUDS

71 1/4"

(2) LAYERS OF 5/8" PROPRIETARY TYPE "C" GWB

FIBERGLASS INSULATION

2x4 WOOD STUDS (SEE STRUCTURAL DWGS. FOR SPACING)

1/2" RESILIENT CHANNELS

(2) LAYERS OF 5/8" PROPRIETARY TYPE "C" GWB

**10 2HR. FIRE WALL**  
GAFLE NUMBER ASW1000  
UL DESIGN NO. #U336

11 3/4"

5/8" GWB

3" MINERAL FIBER

2x4 WOOD STUDS PERPENDICULAR TO WALL @ 16" O.C.

1/2" RESILIENT CHANNELS

1/2" PROPRIETARY TYPE "X" GWB

(2) LAYERS OF 1" x 12" PROPRIETARY TYPE "X" GYPSUM LINER PANELS. FRICITION FIT INTO 2" METAL "L" STUDS. PROVIDE ALUMINUM CLIP ANGLES SECURED WITH TYPE "W" SCREWS TO 1" STUDS AND WITH TYPE "W" SCREWS TO 2" STUDS (SEE STRUCTURAL DWGS. FOR SPACING) @ 24" MAX. O.C.

Date	01/10/12	
Job	11211	
Drawn		
Revision		Date
11211_composite		bimserve