

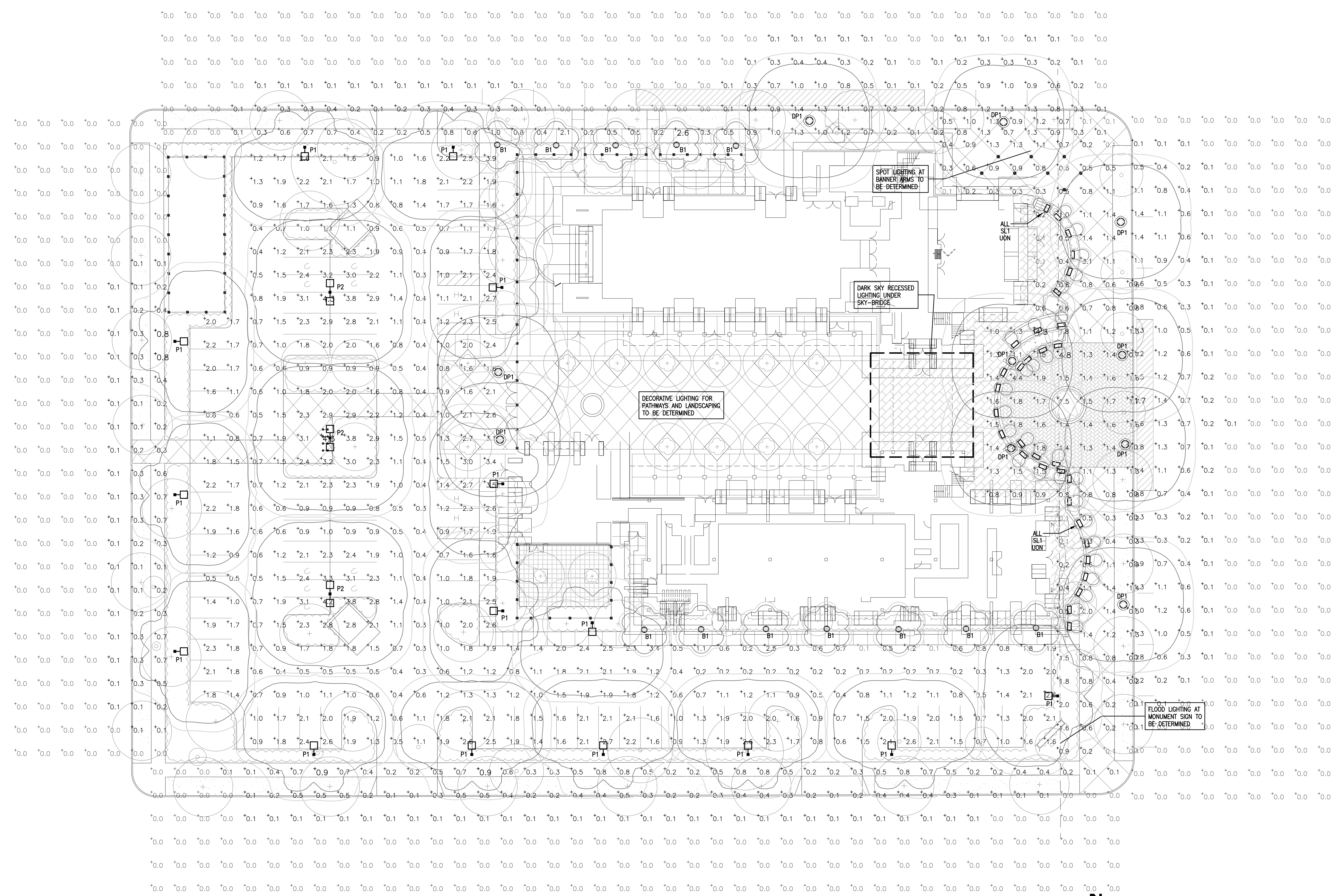
KEYNOTES

Description	Symbol	Avg	Max	Min	Max/Min	Avg/Min
Front Courtyard	+	1.0 fc	4.8 fc	0.1 fc	48.0:1	10.0:1
Parking Lot	+	1.5 fc	4.3 fc	0.1 fc	43.0:1	15.0:1
Spill Light East	+	0.1 fc	0.9 fc	0.0 fc	N / A	N / A
Spill Light North	+	0.2 fc	1.7 fc	0.0 fc	N / A	N / A
Spill Light South	+	0.1 fc	0.8 fc	0.0 fc	N / A	N / A
Spill Light West	+	0.2 fc	2.6 fc	0.0 fc	N / A	N / A

LUMINAIRE SCHEDULE										
TYPE	DESCRIPTION	MOUNTING	LAMPS	WATTS / LUMINAIRE	VOLTAGE	EMERGENCY	MANUFACTURER	CATALOG NUMBER	ALTERNATE MANUFACTURERS	NOTES
B1	DECORATIVE BOLLARD WITH INTERNAL LUMINAIRE, CAST ALUMINUM, 6-SIDED SHAPE, LED LAMP, DARK BRONZE FINISH	SEE DETAIL 3/E1.1PM	40W LED	40	TBD	N/A	ANP LIGHTING	BL4101 SERIES	TBD	
DP1	DECORATIVE POST TOP LUMINAIRE WITH CAST ALUMINUM DECORATIVE POLE, LED LAMP, DARK BRONZE FINISH	SEE DETAIL 5/E1.1PM	40W LED	40	TBD	N/A	ANP LIGHTING	LA4401 SERIES LUMINAIRE WITH LAGUNA SERIES DECORATIVE POLE	TBD	
P1	POLE LIGHT, ROUND HEAD, ROUND TAPERED POLE, DARK BRONZE FINISH, LED SOURCE	SEE DETAIL 1/E1.1PM	49-LED WITH DRIVER	59	TBD	N/A	LITHONIA	MR1-LED SERIES WITH 14" ROUND TAPERED STEEL POLE	TBD	
P2	POLE LIGHT, DUAL HEAD, ROUND HEAD, ROUND TAPERED POLE, DARK BRONZE FINISH, LED SOURCE	SEE DETAIL 2/E1.1PM	(2) 49-LED WITH DRIVER	118	TBD	N/A	LITHONIA	MR1-LED SERIES WITH 14" ROUND TAPERED STEEL POLE	TBD	
SL1	STEP LIGHT, 5" SQUARE, CUT OFF SHIELD, LED SOURCE, ANTIQUE BRONZE FINISH	SEE DETAIL 4/E1.1PM	8W LED	8	TBD	N/A	BK LIGHTING	STEP STAR SERIES	TBD	

LUMINAIRE SCHEDULE NOTES:

NOT SHOWN BUT PLANNED LIGHTING ALSO INCLUDES LANDSCAPE LIGHTING IN FRONT ENTRY ALONG UNIVERSITY DRIVE.



GENERAL NOTES

- REFER TO CIVIL PLANS FOR COORDINATION WITH OTHER EXISTING UTILITIES ON SITE AND FOR INSTRUCTIONS REGARDING LOCATING AND VERIFYING ALL EXISTING UNDERGROUND UTILITIES.
- THE LOCATIONS OF EXISTING UNDERGROUND UTILITIES ARE SHOWN ON CIVIL PLANS IN AN APPROXIMATE WAY ONLY. THE CONTRACTOR SHALL COMPLY WITH ALL LOCAL AND STATE REGULATIONS REGARDING UNDERGROUND FACILITIES DAMAGE PREVENTION. THE CONTRACTOR SHALL DETERMINE THE EXACT LOCATION OF ALL EXISTING UTILITIES BEFORE COMMENCING WORK. THE CONTRACTOR AGREES TO BE FULLY RESPONSIBLE FOR ANY AND ALL DAMAGES WHICH MIGHT BE OCCASIONED AS A RESULT OF SITE WORK. THE CONTRACTOR SHALL CONTACT THE APPROPRIATE UTILITY COMPANIES OR LOCATING SERVICES FOR EXACT UTILITY LOCATIONS A MINIMUM OF 48 HOURS PRIOR TO DIGGING.
- PRESERVE AND PROTECT ALL FACILITIES, STRUCTURES, AND LANDSCAPING OUTSIDE OF THE CONSTRUCTION AREA UNLESS NOTED OTHERWISE.
- COORDINATE WITH LANDSCAPING PLANS FOR SCHEDULE OF LANDSCAPING AND TREES.
- EXISTING EQUIPMENT, DEVICES, AND CONNECTIONS WHERE SHOWN TO REMAIN ARE TO BE PROTECTED DURING ENTIRE CONSTRUCTION PROCESS. PROTECT ALL CONNECTIONS TO KEEP EXISTING EQUIPMENT ACTIVE. WHERE CONNECTIONS ARE DISRUPTED DUE TO CONSTRUCTION ACTIVITIES, REPAIR AND REPLACE DAMAGED CONNECTIONS.
- CONTRACTOR TO PROVIDE THE OWNER WITH 24 HOUR NOTICE PRIOR TO DISCONNECTING POWER OR OTHER UTILITIES.
- ALL UNDERGROUND CONDUIT ELBOWS SWEEPING TO ABOVE GRADE SHALL BE PVC WRAPPED RIGID. WHERE SWEEPING ABOVE GRADE, CONDUITS SHALL PROTRUDE A MINIMUM OF 3 INCHES ABOVE GRADE.
- REFER TO SPECIFICATION SECTION 260100 FOR COORDINATION REQUIREMENTS WITH ELECTRICAL UTILITY COMPANY.
- ALL CONDUCTORS/CABLES INSTALLED UNDERGROUND SHALL BE SUITABLE FOR WET LOCATIONS.

LCA Architects, P.A.
ARCHITECTURE - PLANNING - INTERIOR DESIGN
1221 Shoshone Lane
Boise, Idaho 83702
PHONE: (208) 345-6577 FAX: (208) 344-9002

PRELIMINARY
NOT FOR CONSTRUCTION
P1 Date: May 21, 2012

Eidam Associates
Consulting Engineers
498 Franklin Street
Boise, Idaho 83725
Phone: (208) 342-7773
www.eidam-associates.com

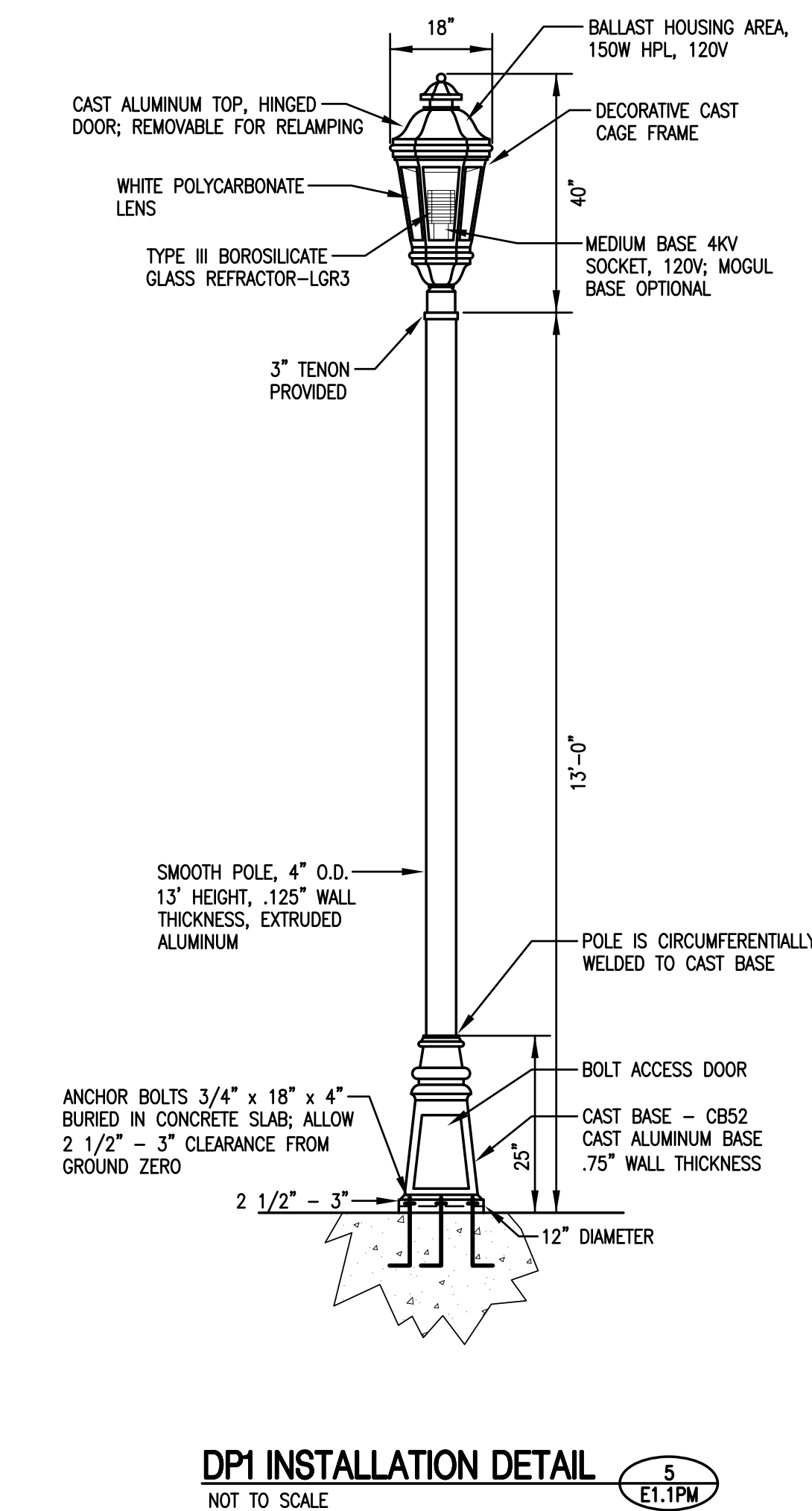
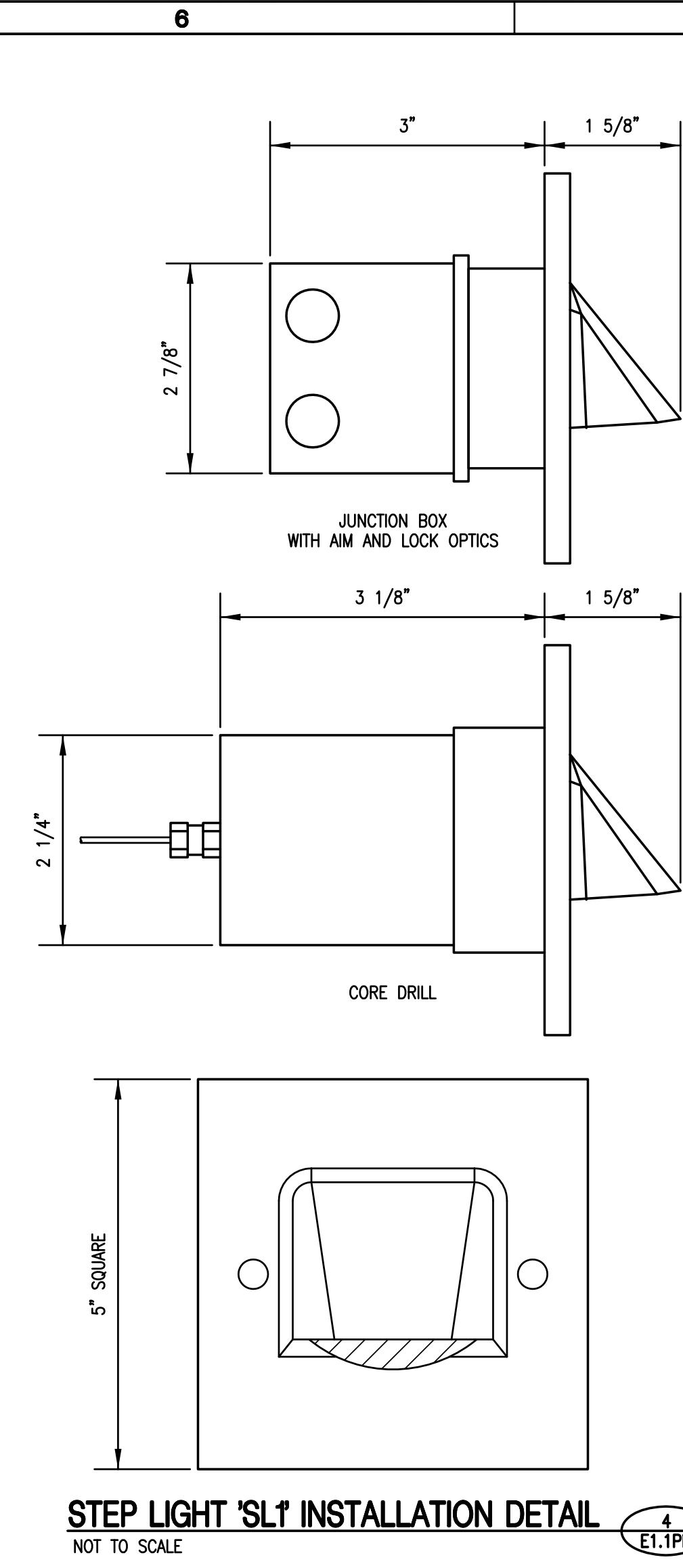
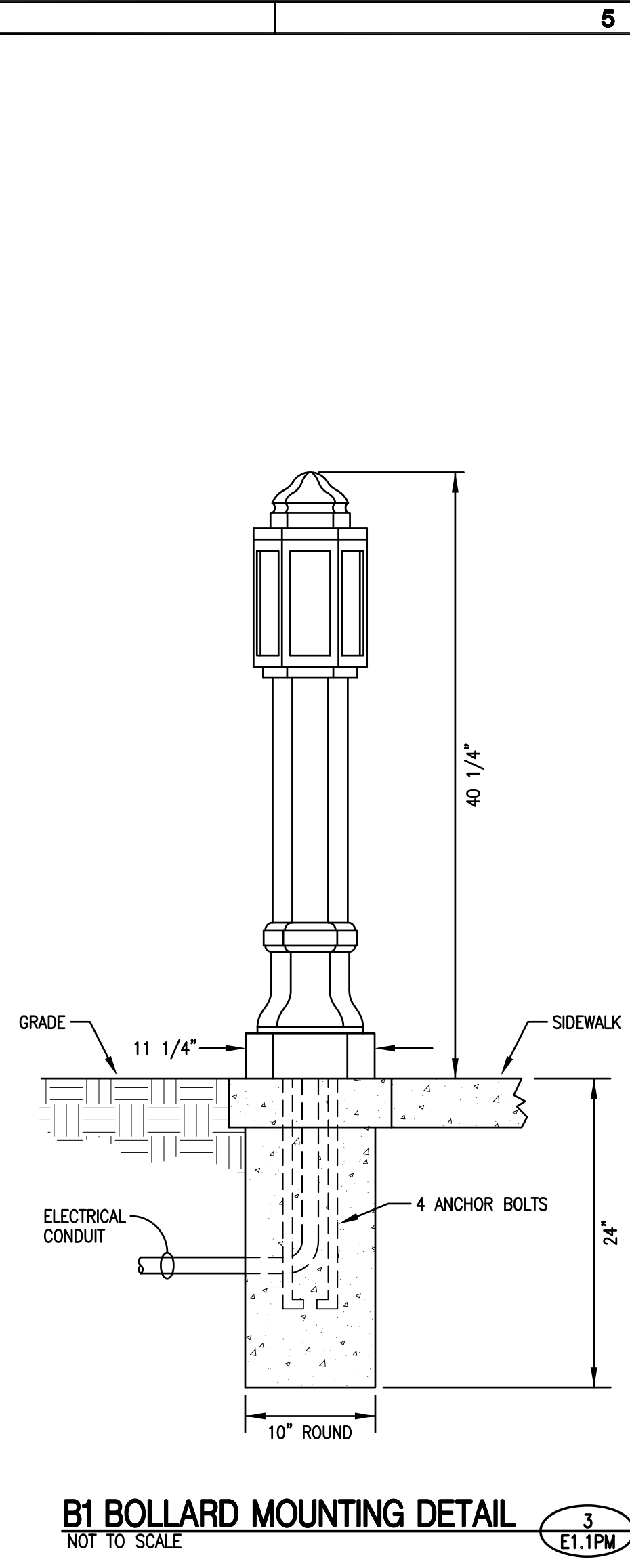
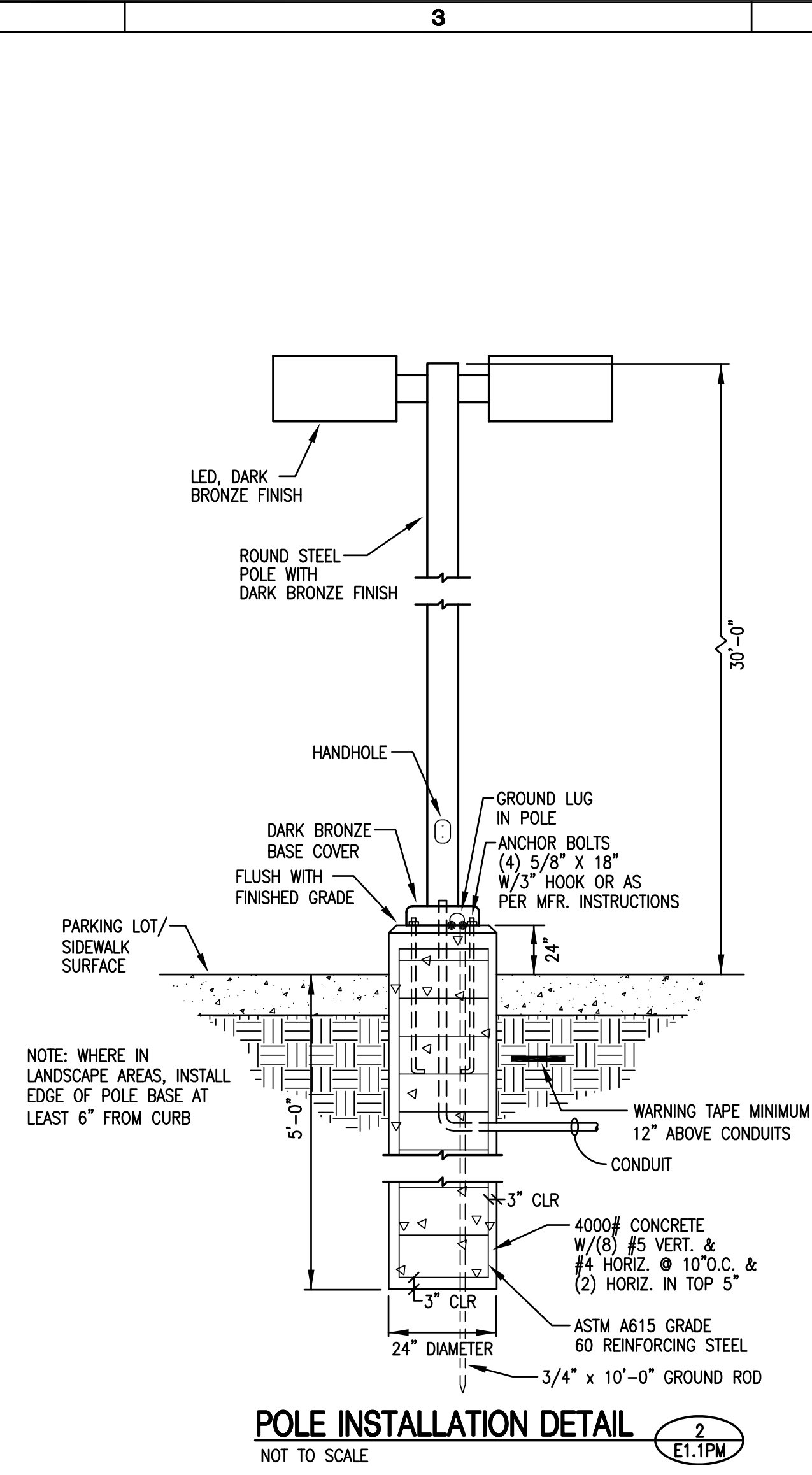
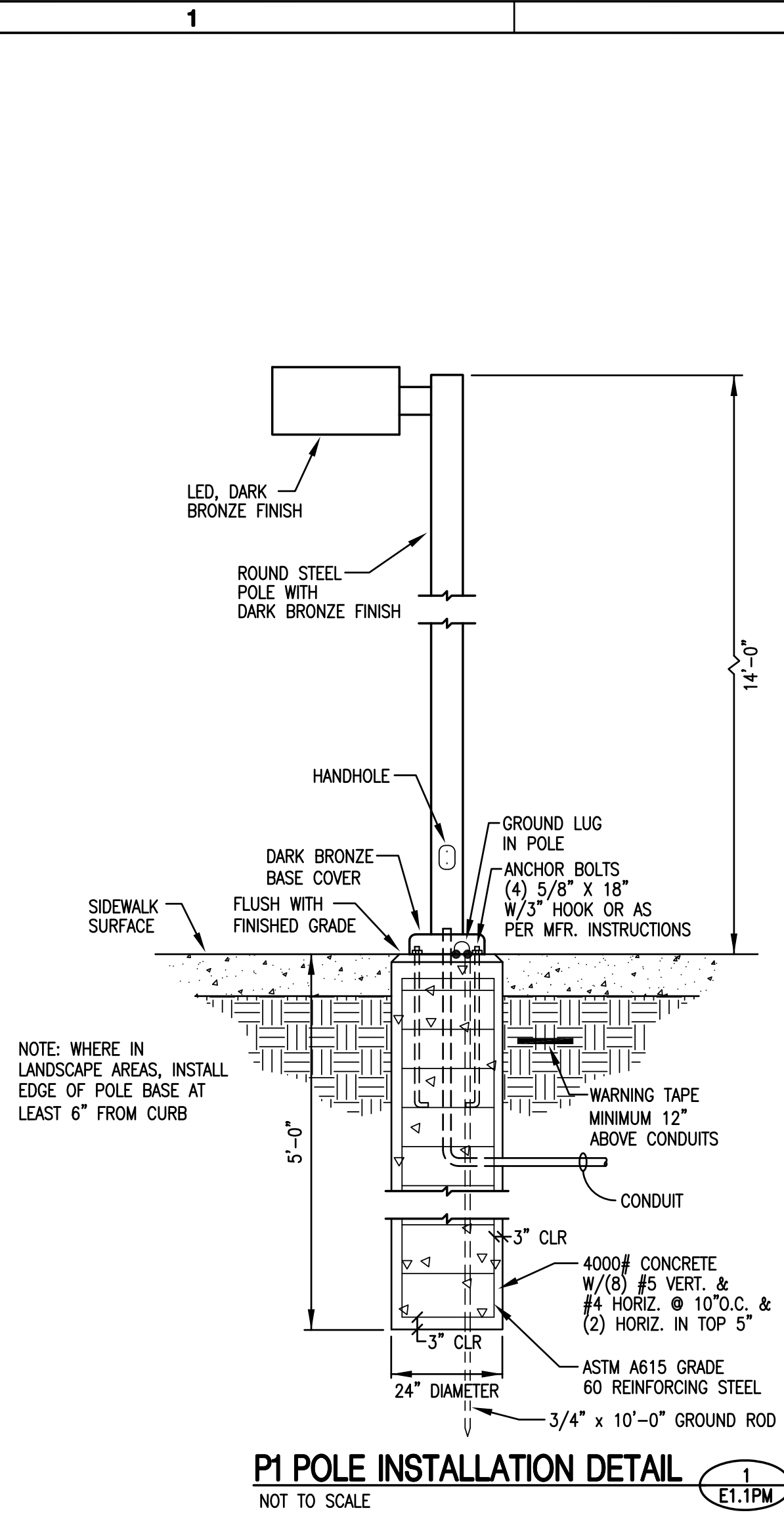
**BOISE STATE UNIVERSITY
ALUMNI AND FRIENDS CENTER
SITE PHOTOMETRIC PLAN**

NO.	DATE	DESCRIPTION

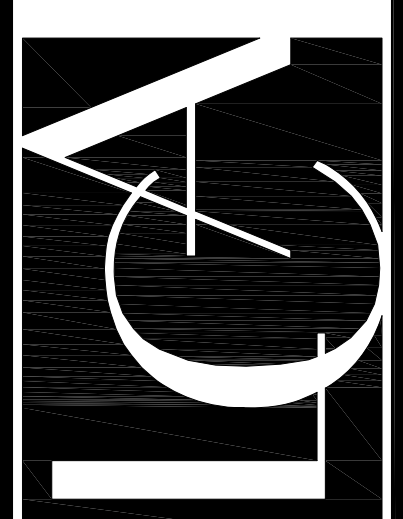
JOB NO.:	19994.01
DATE:	07-27-2012
DRAWN BY:	CRH
CHECK BY:	GLJ

SHEET NO.
E1.OPM

1 SITE PHOTOMETRIC PLAN
SCALE: 1" = 20'-0"



LCA Architects, P.A.
ARCHITECTURE • PLANNING • INTERIOR DESIGN
1221 Shoreline Lane
Boise, Idaho 83702
PHONE: (208) 345-6577 • FAX: (208) 344-9002



PRELIMINARY
NOT FOR CONSTRUCTION
Rev. 01/21/2012

Eidam Associates
Consulting Engineers
488 Franklin
Boise, Idaho 83702
PHONE: (208) 342-7773
FAX: (208) 342-7775
www.eidam-associates.com

**BOISE STATE UNIVERSITY
ALUMNI AND FRIENDS CENTER**

SITE ELECTRICAL DETAILS

REV	DATE	DESCRIPTION

JOB NO.: 10004201
DATE: 07-27-2012
DRAWN BY: CRH
CHKD BY: GLJ

E1.1PM