

W. FRONT ST.

CAPITOL BOULEVARD HAS STRONG PEDESTRIAN ACCENTS: LIGHT RED BRICK HERRINGBONE PATTERN WITH A DARK BRICK DOUBLE SOLDIER PATTERN AROUND THE OUTSIDE

PEDESTRIAN PLAZA FEATURES: LARGE BROWN COLORED METAL SCULPTURE ELEMENT WITH A SHRUB PLANTER AND A BRONZE BRICK BAND, DOUBLE SOLDIER COURSE ACCENT

RECYCLE CONCRETE PARKING BUMPERS WITH TOP 1"-2" EXPOSED ABOVE GRADE.

ARCHITECTURAL ACCENT SCREEN WALLS (SEE ARCHITECTURAL DWGS).

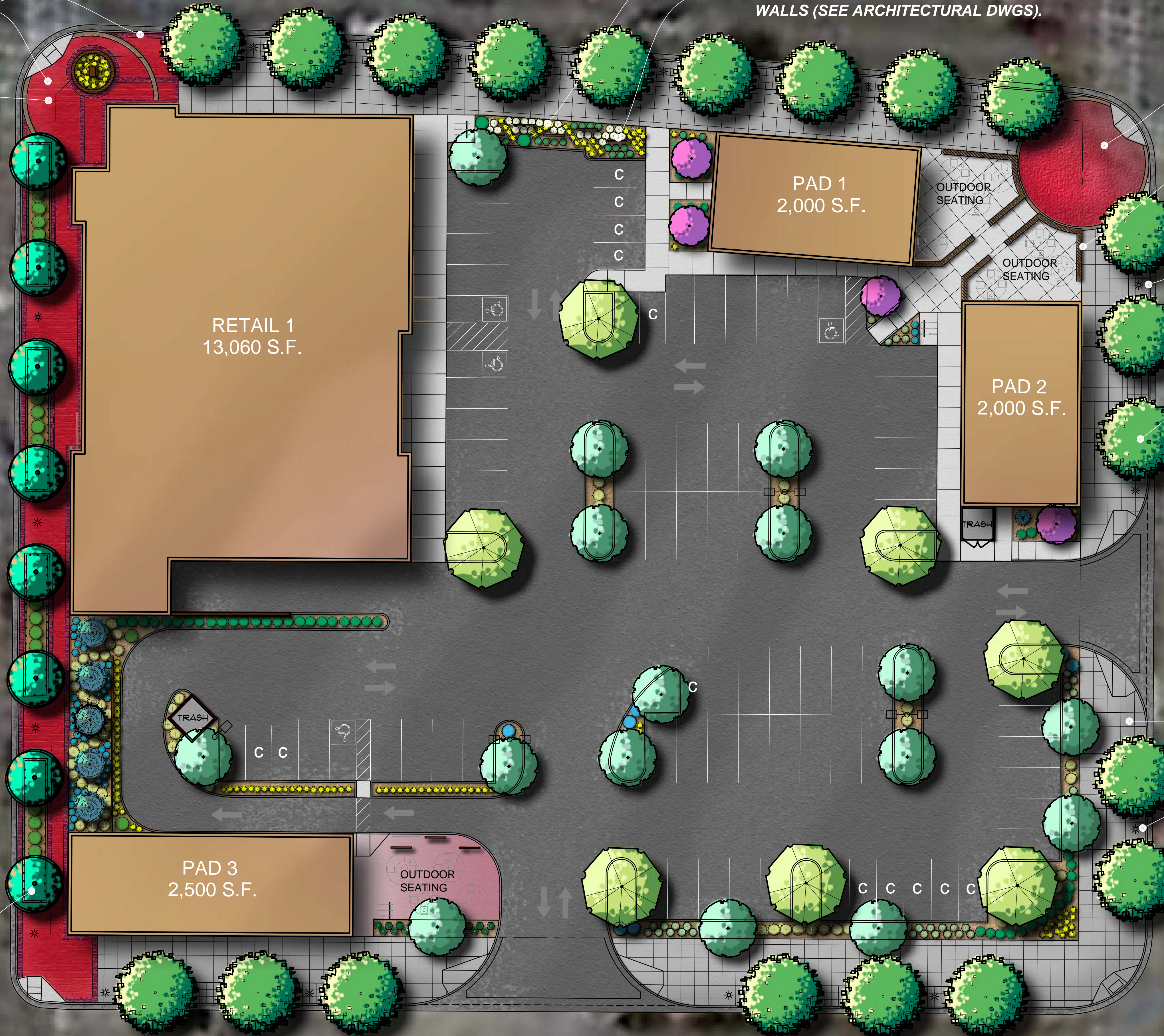
PEDESTRIAN PLAZA: RED STAMPED AND STAINED CONCRETE WITH A SLATE PATTERN

PLAZA AREA: 22" HEIGHT CONCRETE BLOCK SEAT WALL, STUCCO FINISH W/ 2" DARK BROWN CAP (COLORS TO MATCH BUILDING)

HISTORIC LIGHT POLE (TYPICAL SYMBOL)

6'X6' TREE GRATE LOCATED ON BROAD STREET, 6TH STREET AND FRONT STREET

S. CAPITOL BLVD.



S. 6TH STREET

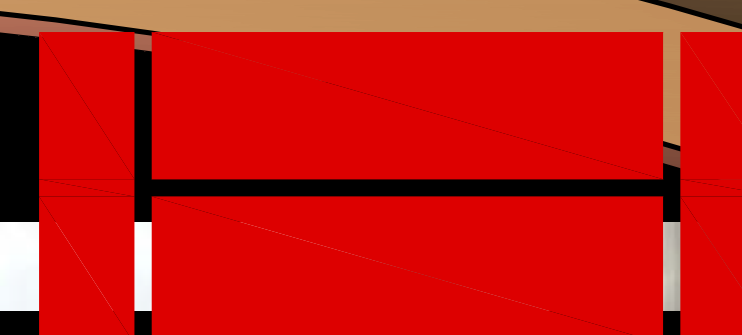
PEDESTRIAN SIDEWALK: BROAD STREET, 6TH STREET AND FRONT STREET ARE STANDARD CONCRETE SIDEWALKS WITH 4'X4' MODULAR SIDEWALK JOINTS AND 2'X2' MODULAR SIDEWALK JOINTS BETWEEN THE TREE GRATES

LANDSCAPE PLANTER AREA: LOW WROUGHT IRON RAIL WITH SHRUBS, GROUND COVER AND STREET TREES TO MATCH EXISTING CAPITOL BLVD. TREATMENTS

W. BROAD ST.



Capitol & Front Street Site Plan



HAWKINS COMPANIES
COMMERCIAL DEVELOPERS



erstad ARCHITECTS, PA
420 main street, suite 202, boise, idaho 83702
(208) 331-9051 fax 331-9055 e-mail: mail@erstadarbitects.com