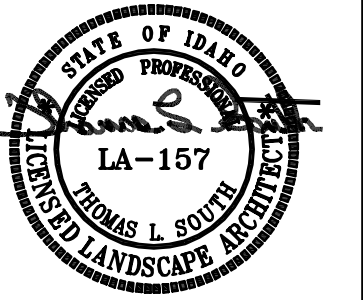


W. FRONT ST.



erstad ARCHITECTS
erstad ARCHITECTS, PA
407 main street, suite 302, boise, idaho 83702
(208) 331 9811 fax 331 9833 e-mail: erstad@erstadarch.com

This document is the property of erstad ARCHITECTS and is protected by U.S. and international laws. Use, reproduction or modification of this document without first obtaining the written permission of erstad ARCHITECTS is prohibited. This document may not be used in any unauthorized manner. ©2012

capitol + front st.
300 s. capitol blvd.
boise, idaho 83702

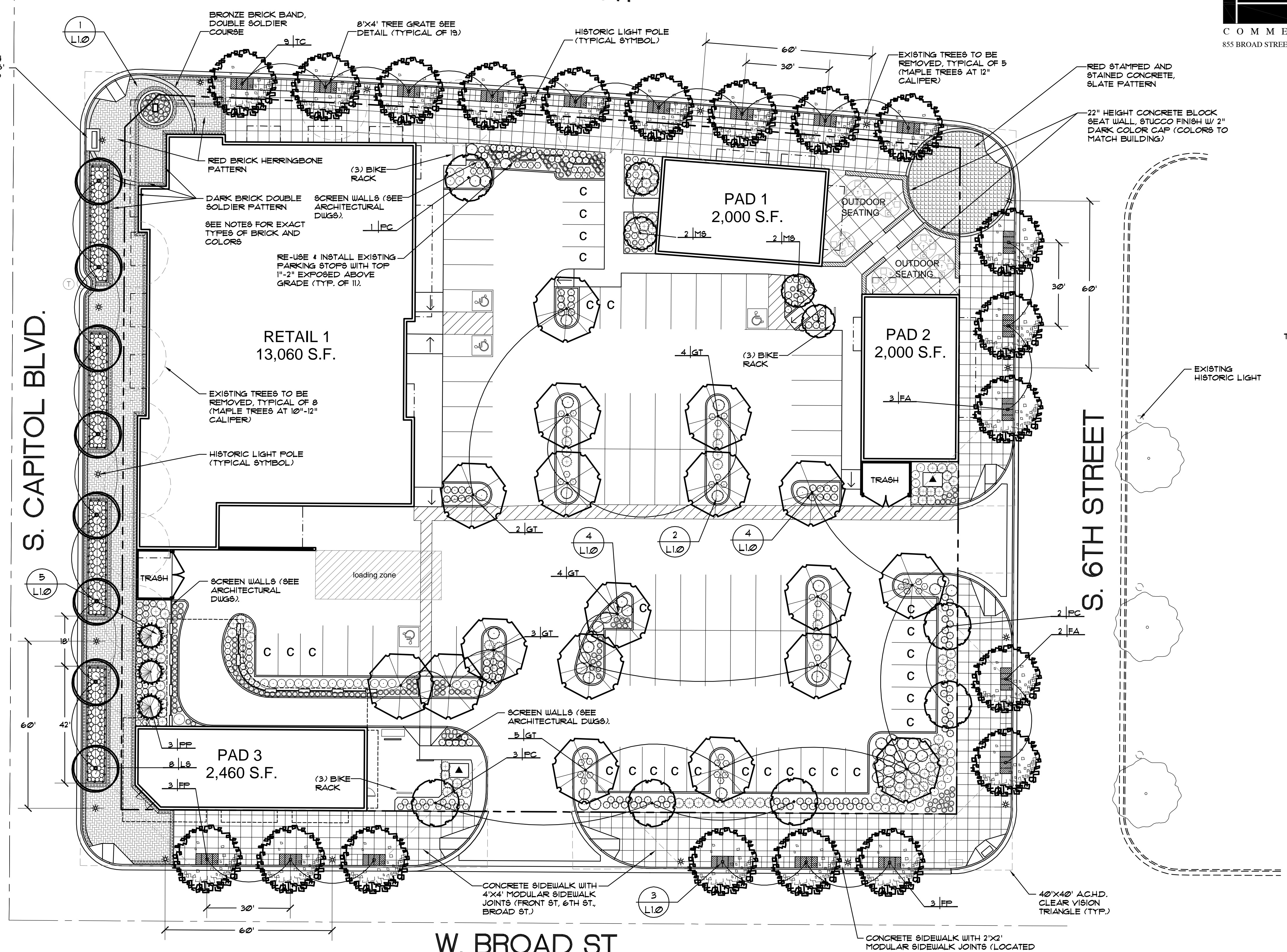
revision:

project: 120903
date: 12.18.12
drawn: JDR
checked: TLS

work session

landscape plan

L1.0



PLANT SCHEDULE (NOTE: ALL TREES TO BE GRADE #1)

QTY.	KEY	BOTANICAL NAME COMMON NAME	PLANTING SIZE	MATURE SIZE	CLASS
TREES					
8	L8	Liquidambar styraciflua 'Ward' Cherokee Sweetgum	25" B4B	25' hgt. 12' wide	I
5	FA	Fraxinus americana 'Jungling' Autumn Purple White Ash	25" B4B	35' hgt. 25' wide	II
6	FP	Fraxinus pennsylvanica 'Summit' Summit Ash	25" B4B	35' hgt. 25' wide	II
18	GT	Gleditsia triacanthos 'nervis' 'Shademaster' Shademaster Honeylocust	2" B4B	18' hgt. 8' wide	I
4	MS	Malus 'Red Barron' Red Barron Crabapple	2" B4B	18' hgt. 8' wide	I
6	PC	Pyrus calleryana 'Capita' Capita Flowering Pear	2" B4B	25' hgt. 12' wide	I
9	TC	Tilia americana 'Boulevard' Boulevard Linden	25" B4B	40' hgt. 25' wide	II
3	FP	Picea pungens 'leall' 'Foxtail' leall Foxtail Spruce	3-4" hgt. B4B	10' hgt. 1' wide	Conifer
TOTAL TREES: 59 TOTAL TREE TYPES: 8					
SHRUBS					
		Berberis thunbergii 'Crimson Pigeon' Crimson Pigeon Japanese Barberry	2 Gal.	3' hgt. x 3' wide	
		Juniperus horizontalis 'Blue Chip' Blue Chip Juniper	2 Gal.	6" hgt. x 4' wide	
		Rosa x 'Nostrum' Pink Shrub Rose	2 Gal.	3' hgt. x 4' wide	
		Spiraea japonica 'Neon Flash' Neon Flash Spiraea	2 Gal.	2' hgt. x 3' wide	
Note: Pink Shrub Rose shall match in kind the existing variety located adjacent to the property on the West side of Capitol Blvd. (Contact Boise City Forester.)					
GROUND COVERS/ GRASSES/ PERENNIALS					
		Calamagrostis x acutiflora 'Overdam' Overdam Feather Reed Grass	2 Gal.	3' hgt. x 3' wide	
		Festuca ovina glauca 'Elijah' Elijah Blue Fescue	1 Gal. @ 24" O.C.	18" hgt. x 18" wide	
		Hemerocallis x 'Stella De Oro' Stella De Oro Daylily	2 Gal.	18" hgt. x 2' wide	
		Lavandula angustifolia 'Thumbelina Leigh' Thumbelina English Lavender	1 Gal.	12" hgt./ 12" wide	
		Perisetum slovenskoides 'Little Bunny' Little Bunny Dwarf Fountain Grass	2 Gal.	2' hgt. x 25" wide	
		Sedum x 'Brilliant' Brilliant Stonecrop	1 Gal. @ 24" O.C.	18" hgt. x 18" wide	
		Salvia x sylvestris 'Blue' Blue Salvia	1 Gal. @ 24" O.C.	18" hgt. x 18" wide	
		Vinca minor 'Bowles' Bowles Common Periwinkle	4" Pots @ 24" O.C.	6" hgt. x 2' wide	
		Hedera helix 'Baltica' Baltic Ivy	1 Gal. @ 18" Triangular Spacing	6" hgt. x 2' wide	

KEY:
○ SHRUBS
○ Berberis thunbergii 'Crimson Pigeon'
○ Juniperus horizontalis 'Blue Chip'
○ Rosa x 'Nostrum'
○ Spiraea japonica 'Neon Flash'

○ Calamagrostis x acutiflora 'Overdam'
○ Festuca ovina glauca 'Elijah'
○ Hemerocallis x 'Stella De Oro'
○ Lavandula angustifolia 'Thumbelina Leigh'
○ Perisetum slovenskoides 'Little Bunny'
○ Sedum x 'Brilliant'
○ Salvia x sylvestris 'Blue'
○ Vinca minor 'Bowles'
○ Hedera helix 'Baltica'

(NOTE: Plant material quantities are provided for convenience only and may not be accurate.)

LANDSCAPE NOTES

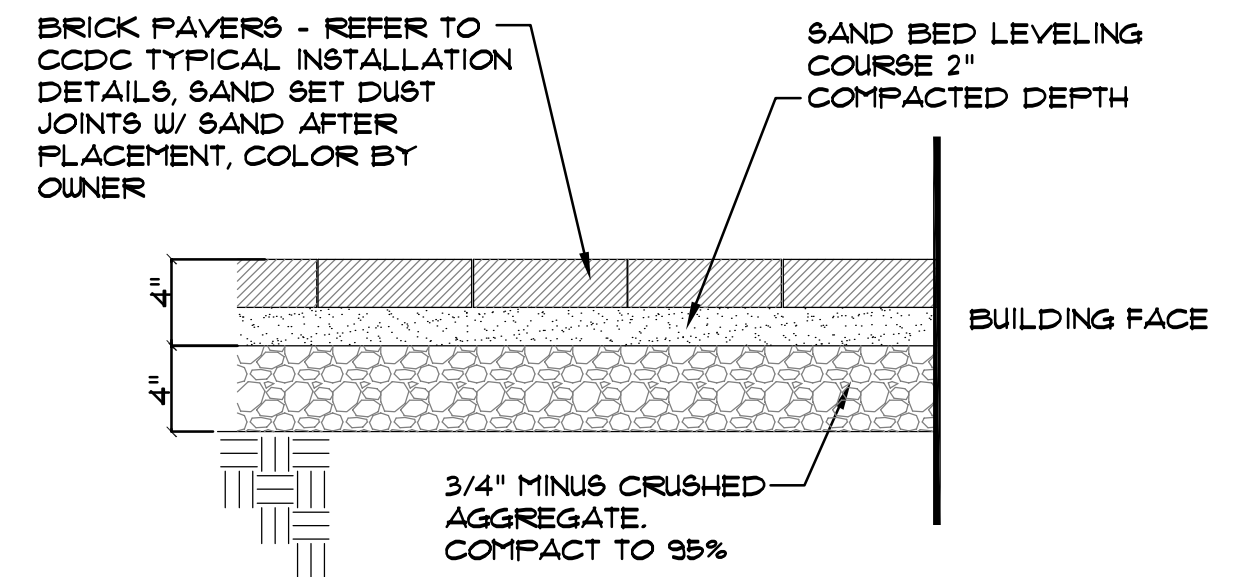
- See Specifications.
- All plant material shall conform to the American Nurseryman Standards for type and size shown.
- All landscape plant beds and steps walls shall have an organic mulch UNLESS OTHERWISE NOTED ON THE DRAWING. Place a 3" minimum depth, install per manufacturer's recommendations.
- All planting beds shall have 12" of topsoil at a minimum.
- Contractor shall respect any and all local utility setbacks and adjust planting as necessary in the field.
- Trim lower branches of proposed trees to preserve sight lines (per ACHD requirements).
- Contractor shall verify all plant schedule quantities on the plans, quantities are for convenience only.
- Contractor shall respect any all CCDC and the City of Boise requirements and details.
- Contractor shall verify all underground site utilities before any work commences and follow all local, state, and federal laws.
- All landscape areas to be irrigated with a state of the art automatic underground irrigation system.
- NOTE: All street trees need to be approved or a recommendation will be provided by The Boise City Forester.

SITE INFORMATION

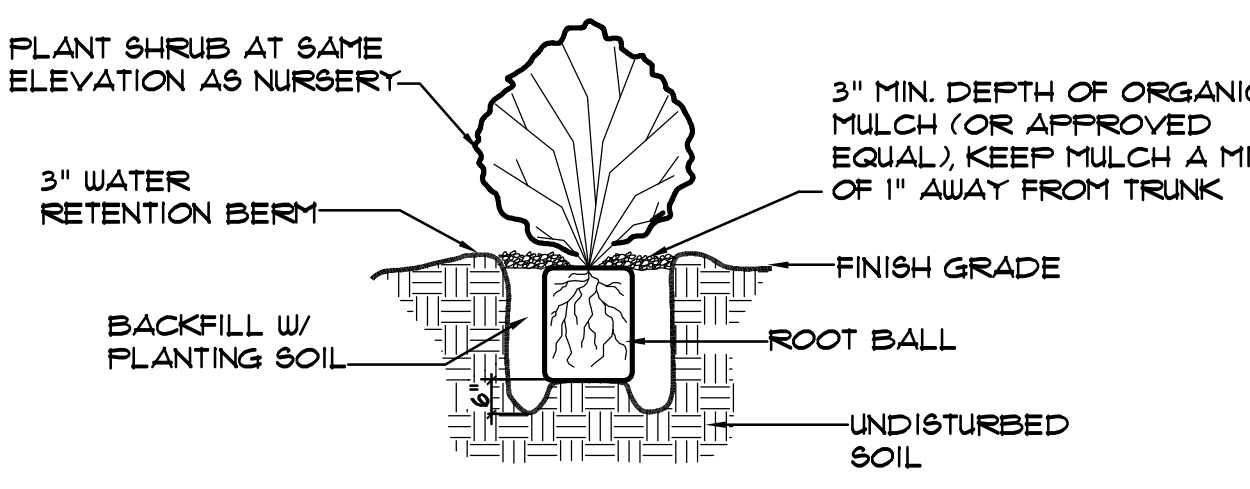
- Capitol Boulevard is classified as "Type 6 - Capitol Blvd" in the CCDC Downtown Boise Streetscape Standards 4 Specifications.
- Front Street, Broad Street and 6th Street are classified as "Type 3 - Narrow Urban Concrete" in the CCDC Downtown Boise Streetscape Standards 4 Specifications.
- Brick pavers shall be 2-1/4"x8" by Endicott Clay products (or approved equal) - Areas at the base of buildings and funding zone. Red Brick-No. 46 Medium Ironspot Blend - Areas in the pedestrian zone.
- Historic Street lights are 60" O.C. and shall be located and approved by CCDC and The City of Boise Design Review.
- Locations of site furnishing along all street frontages, including benches, trash receptacles, bike racks, and movable planters shall be coordinated with CCDC and The City of Boise Design Review for locations and quantities.

LANDSCAPE PLAN

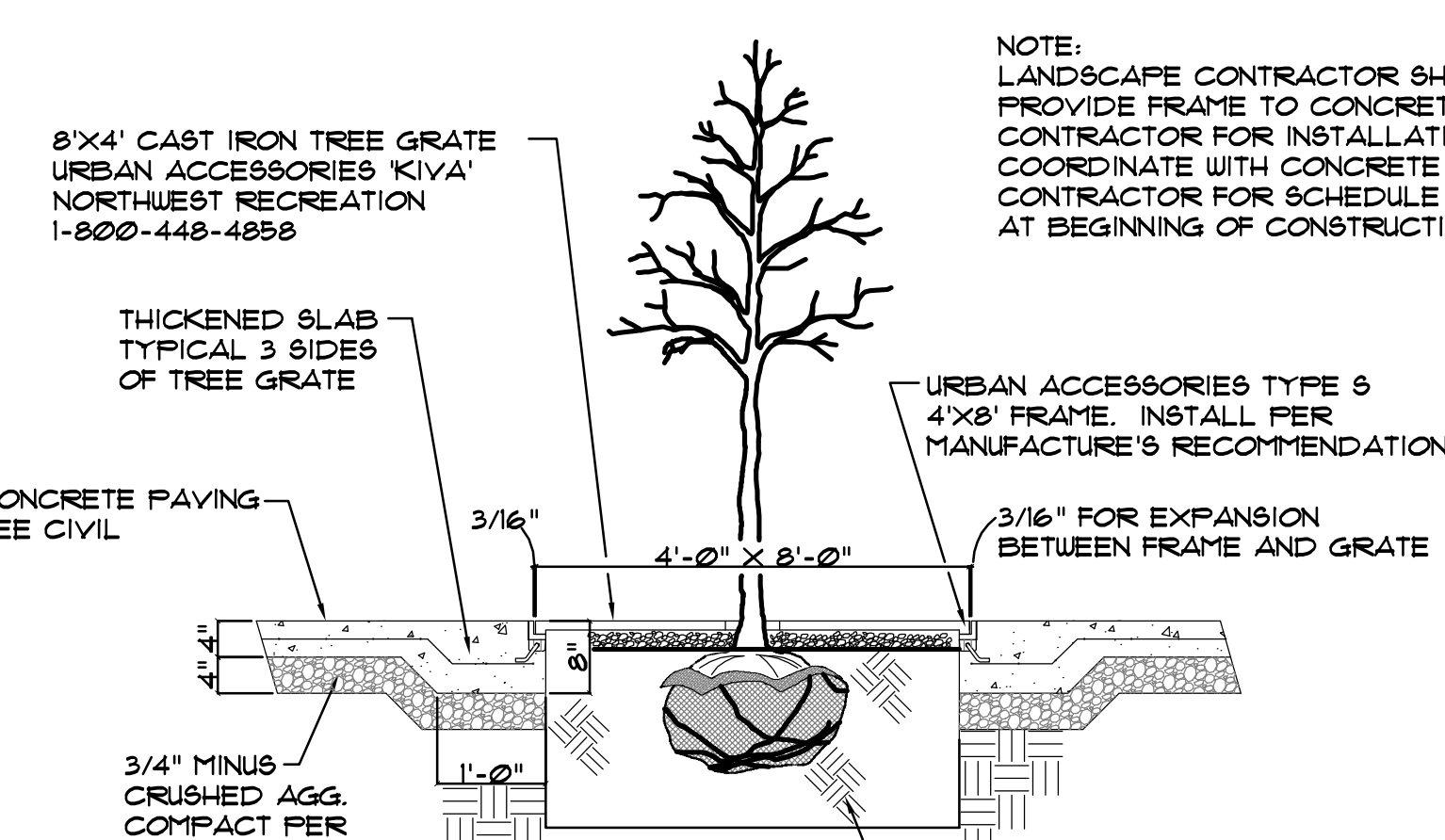
SCALE: 1"=20'-0"



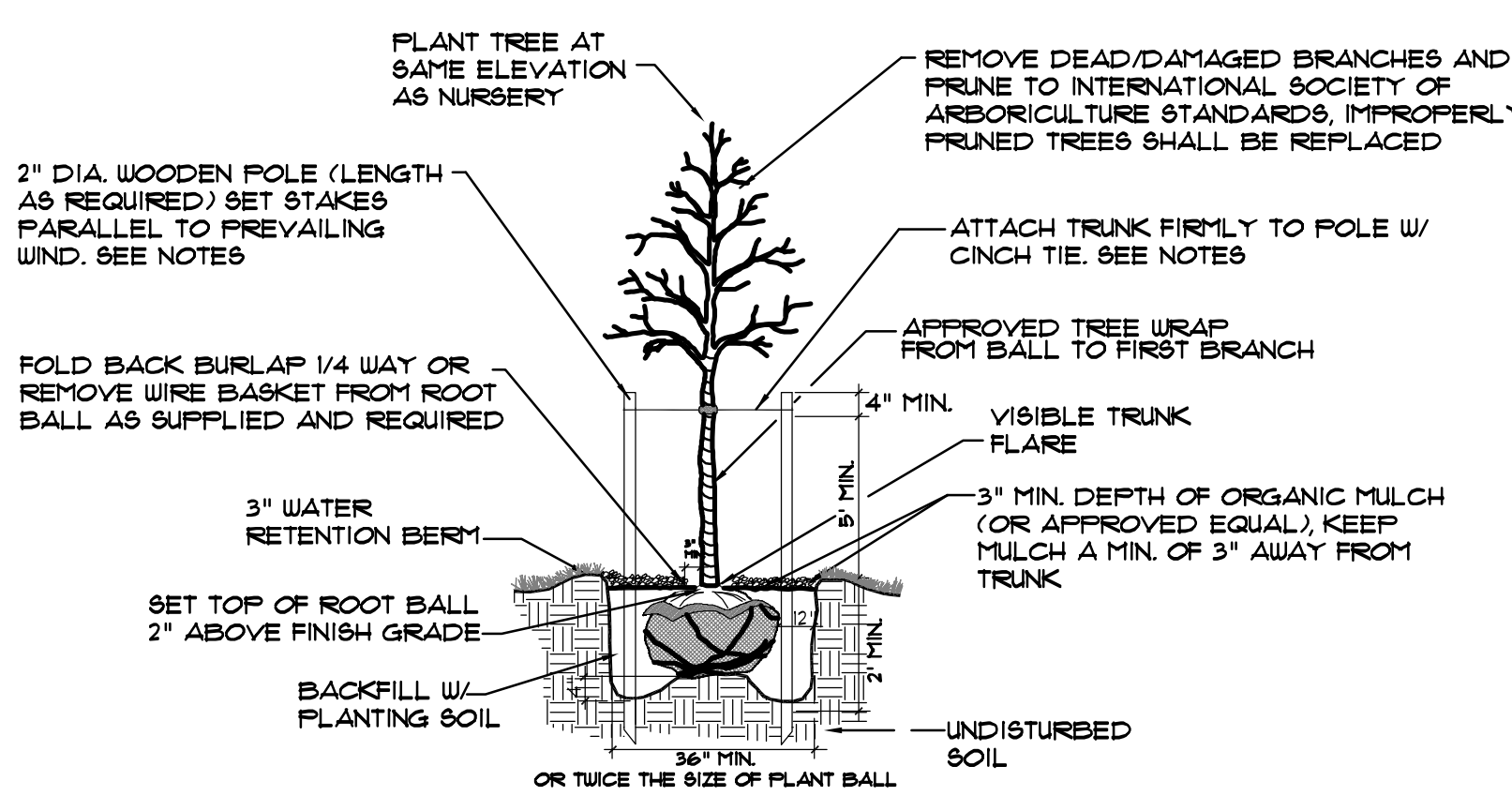
1 BRICK PAVER DETAIL (typ.)
NO SCALE
note: for reference only, refer to CCDC standard details for installation.



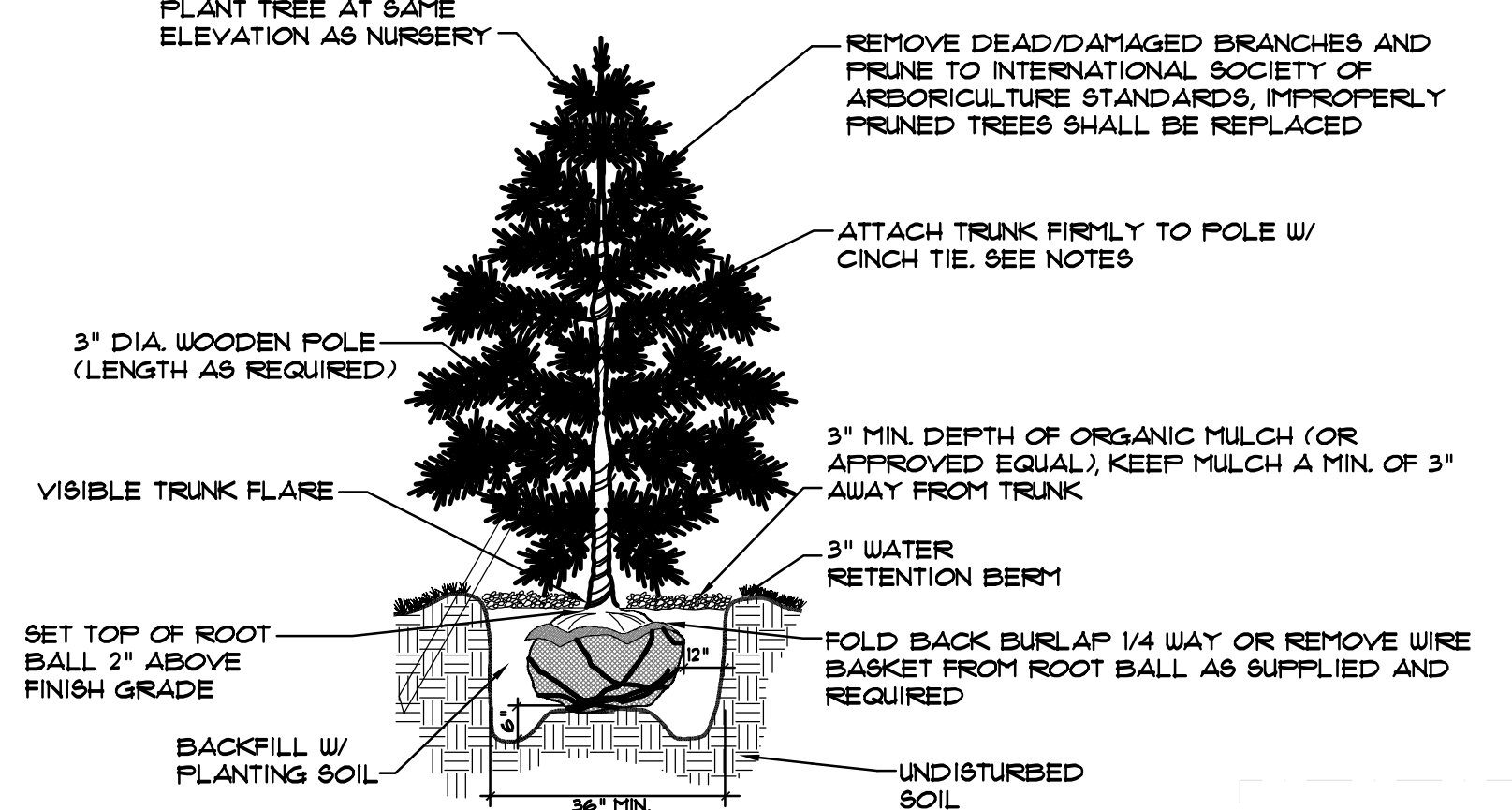
2 SHRUB PLANTING DETAIL
NO SCALE
NOTE - DIG HOLE TWICE THE SIZE OF ROOT BALL



3 TREE GRATE DETAIL
NO SCALE
NOTE: LANDSCAPE CONTRACTOR SHALL PROVIDE FRAME TO CONCRETE CONTRACTOR FOR INSTALLATION. COORDINATE WITH CONCRETE CONTRACTOR FOR SCHEDULE OF POUR AT BEGINNING OF CONSTRUCTION.



4 DECIDUOUS TREE PLANTING DETAIL
NO SCALE
NOTES:
1. THE STAKING OF TREES IS TO BE THE CONTRACTOR'S OPTION HOWEVER THE CONTRACTOR IS RESPONSIBLE TO INSURE THAT ALL TREES ARE PLANTED STRAIGHT AND THAT THEY REMAIN STRAIGHT FOR THE TERM OF THE WARRANTY.
2. WRAP RUBBER CINCH TIE (OR APPROVED EQUAL) AROUND THE TREE TRUNKS AND STAKES USING EITHER THE STANDARD OR FIGURE EIGHT METHOD. SECURE THE TIES TO THE STAKES WITH GALVANIZED NAILS TO PREVENT MOVEMENT.
3. WATER IN BACKFILL BELOW THE ROOT BALL PRIOR TO SETTING TREE (TO INSURE NO SETTLING WILL OCCUR).
4. DEEP SOAK TREE TWICE WITHIN THE FIRST 48 HOURS.



5 CONIFEROUS TREE PLANTING DETAIL
NO SCALE
NOTES:
1. THE STAKING OF TREES IS TO BE THE CONTRACTOR'S OPTION HOWEVER THE CONTRACTOR IS RESPONSIBLE TO INSURE THAT ALL TREES ARE PLANTED STRAIGHT AND THAT THEY REMAIN STRAIGHT FOR THE TERM OF THE WARRANTY.
2. WRAP RUBBER CINCH TIE (OR APPROVED EQUAL) AROUND THE TREE TRUNKS AND STAKES USING EITHER THE STANDARD OR FIGURE EIGHT METHOD. SECURE THE TIES TO THE STAKES WITH GALVANIZED NAILS TO PREVENT MOVEMENT.
3. WATER IN BACKFILL BELOW THE ROOT BALL PRIOR TO SETTING TREE (TO INSURE NO SETTLING WILL OCCUR).
4. DEEP SOAK TREE TWICE WITHIN THE FIRST 48 HOURS.