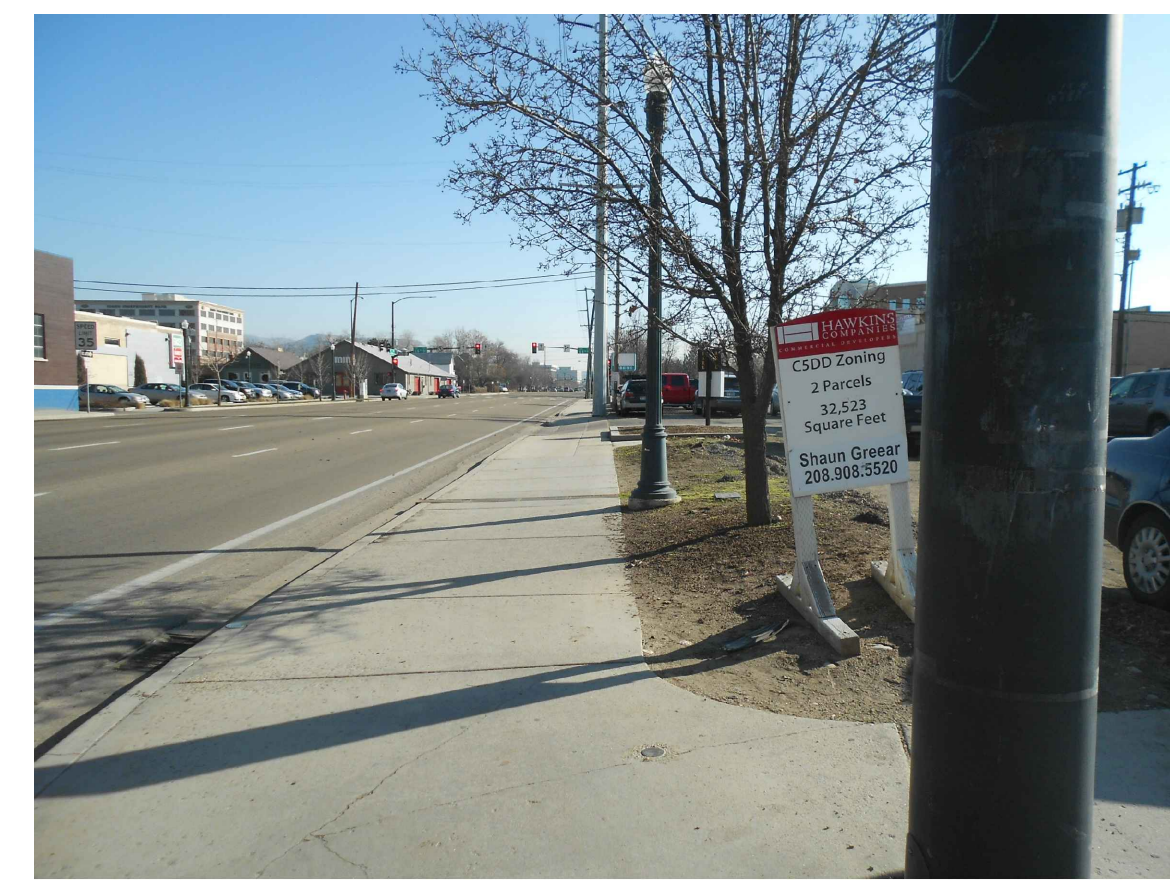




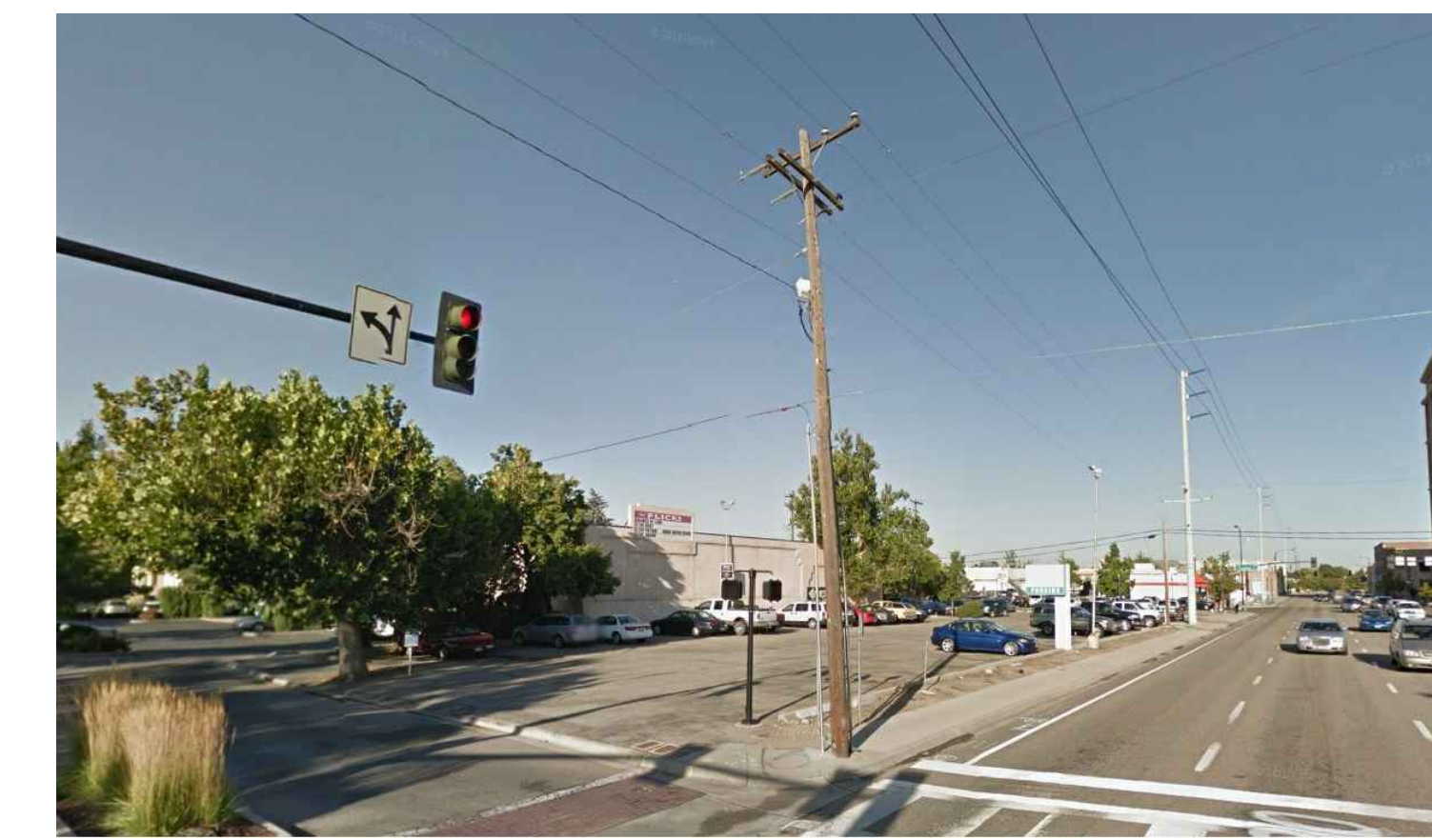
1 Northwest corner of Capitol Blvd. and Myrtle St.



2 Looking east down Myrtle St.



3 Looking south down 6th St.



4 Northeast corner of Myrtle St. and 6th St.



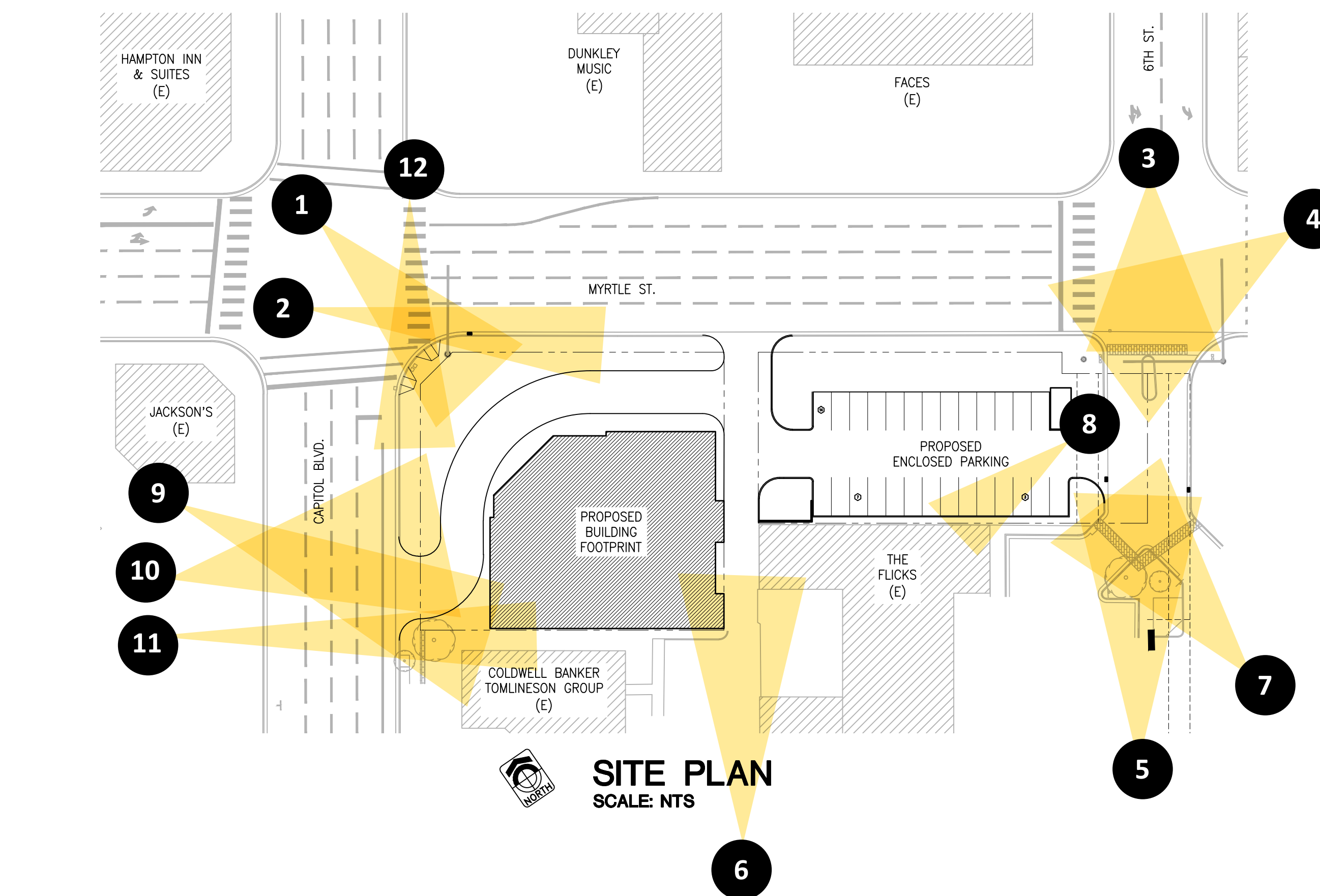
12 Looking south down Capitol Blvd.



11 Existing Coldwell Banker Tomlineson group building to the south of proposed project site



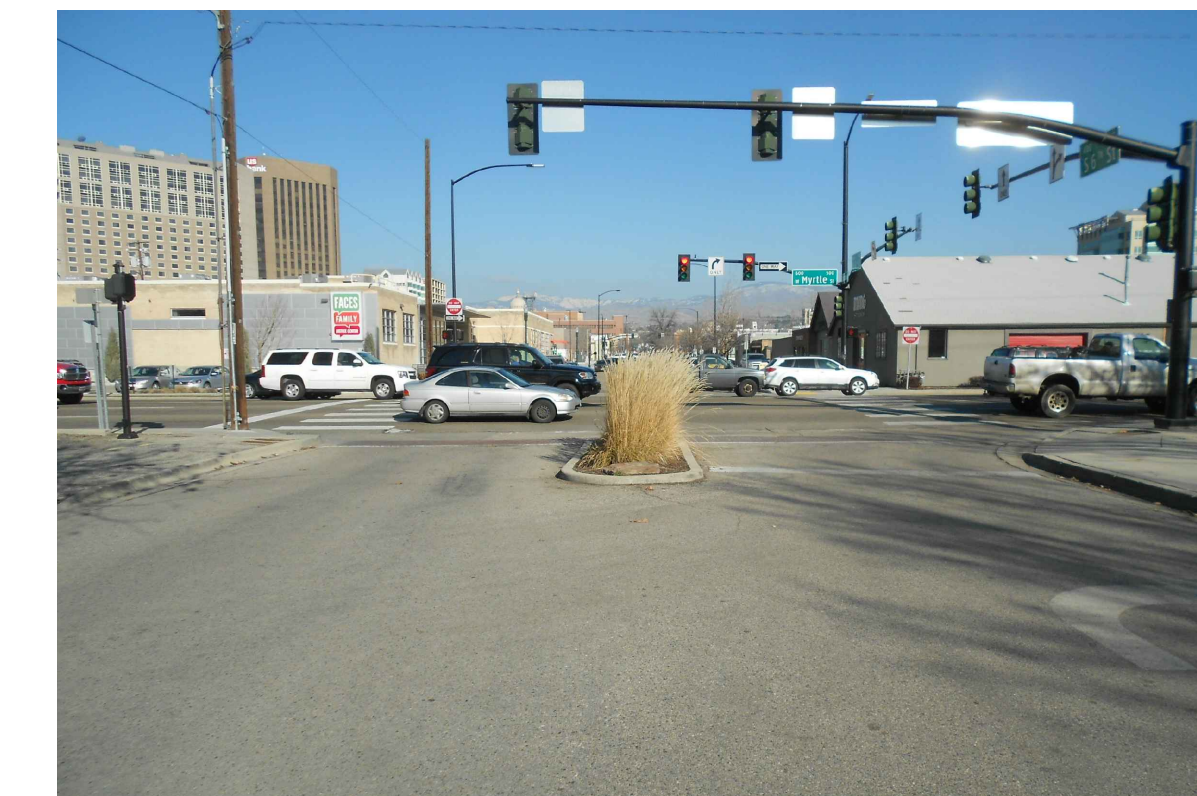
10 Southwest corner of site along Capitol Blvd.



9 Existing Coldwell Banker Tomlineson group building to the south of proposed project site



8 Existing Flucks theater to the south of proposed project site



5 Looking north down 6th St.



6 Looking north down alley



7 Southeast corner of site looking north

PRELIMINARY
NOT FOR
CONSTRUCTION

BOISE, IDAHO

INN AT 500 CAPITOL
500 CAPITOL

CSHOA

DESIGN
REVIEW

PROJECT	DATE
14215.00	3/10/15
DRAWN	CHECKED
AMB	JAM

REVISED

SHEET TITLE
EXISTING
SITE
PHOTOS

SHEET

A2.7

ORIGINAL SHEET SIZE
24" x 36"

200 BROAD STREET
BOISE, IDAHO
PHONE: 208-343-4635 FAX: 208-343-1858

THESE DRAWINGS AND SPECIFICATIONS AS INSTRUMENTS OF SERVICE ARE THE PROPERTY OF CSHOA. THEY ARE TO BE USED ONLY FOR THE PROJECT AND SITE SPECIFICALLY IDENTIFIED HEREIN. ANY REUSE OR MODIFICATION OF THESE DRAWINGS OR SPECIFICATIONS WITHOUT THE WRITTEN CONSENT OF CSHOA IS STRICTLY PROHIBITED. Copyright © 2015

200 BROAD STREET
BOISE, IDAHO 83702
(208) 343-4635 • FAX (208) 343-1858
www.cshqa.com