



Planning & Development Services

Boise City Hall, 2nd Floor
150 N. Capitol Boulevard
P.O. Box 500
Boise, Idaho 83701-0500

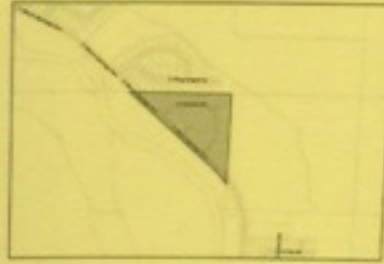
Phone: 208/384-3830
Fax: 208/384-3753
TDD/TTY: 800/377-3529
Website: www.cityofboise.org/pds

LEGAL NOTICE OF PUBLIC HEARING

THE BOISE CITY PLANNING AND ZONING COMMISSION WILL HEAR A REQUEST FOR AN ANNEXATION (CAR15-00026)

Boise City requests an annexation that contains 45 parcels totaling approximately 95 acres including: 1. A portion of Crane Creek Golf Course, 2. Riverland Terrace Subdivision and 3. Parcels in southeast Boise. Zoning to be assigned will match Ada County zoning or the Boise City Comprehensive Plan Land Use Map designation. Property owners may obtain a copy of the written annexation plan free of charge by sending an email to ccarroll@cityofboise.org or by phoning 208-384-3830. The Planning Commission will consider written comments that are received via letter or e-mail by September 17th at 5:00 pm.

The hearing will be held on September 21, 2015 AT 6:00 P.M. in the Council Chambers on 3rd floor of City Hall, 150 N. Capitol Blvd, Boise, Idaho.





Planning & Development Services

Boise City Hall, 2nd Floor
150 N. Capitol Boulevard
P.O. Box 500
Boise, Idaho 83701-0500

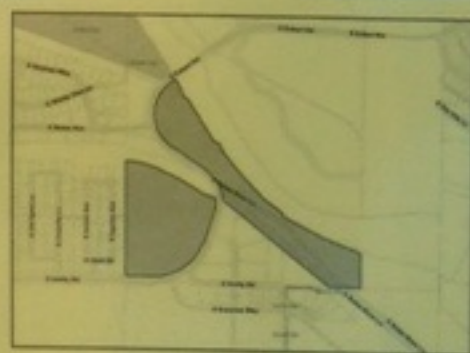
Phone: 208/384-3830
Fax: 208/384-3753
TDD/TTY: 800/377-3529
Website: www.cityofboise.org/pds

LEGAL NOTICE OF PUBLIC HEARING

THE BOISE CITY PLANNING AND ZONING COMMISSION WILL HEAR A REQUEST FOR AN ANNEXATION (CAR15-00026)

Boise City requests an annexation that contains 45 parcels totaling approximately 95 acres including: 1. A portion of Crane Creek Golf Course, 2. Riverland Terrace Subdivision and 3. Parcels in southeast Boise. Zoning to be assigned will match Ada County zoning or the Boise City Comprehensive Plan Land Use Map designation. Property owners may obtain a copy of the written annexation plan free of charge by sending an email to ccarroll@cityofboise.org or by phoning 208-384-3830. The Planning Commission will consider written comments that are received via letter or e-mail by September 17th at 5:00 pm.

The hearing will be held on September 21, 2015 AT 6:00 P.M. in the Council Chambers on 3rd floor of City Hall, 150 N. Capitol Blvd, Boise, Idaho.





Planning & Development Services

Boise City Hall, 2nd Floor
150 N. Capitol Boulevard
P.O. Box 500
Boise, Idaho 83701-0500

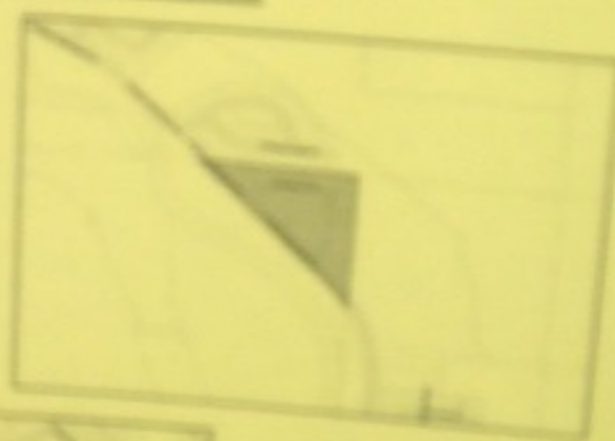
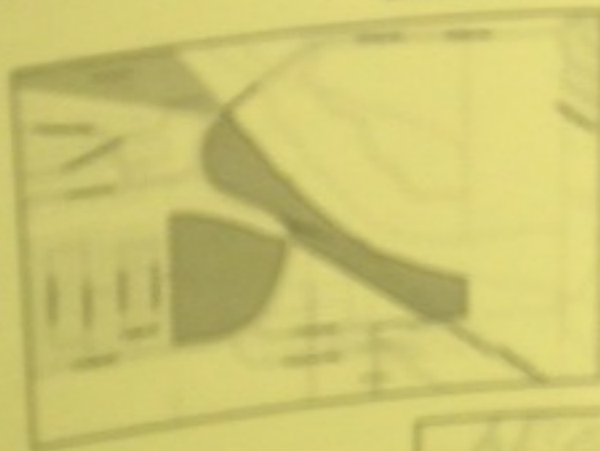
Phone: 208/384-3830
Fax: 208/384-3753
TDD/TTY: 800/377-3529
Website: www.cityofboise.org/pds

LEGAL NOTICE OF PUBLIC HEARING

THE BOISE CITY PLANNING AND ZONING COMMISSION WILL HEAR A REQUEST FOR AN ANNEXATION (CAR15-00026)

Boise City requests an annexation that contains 45 parcels totaling approximately 95 acres including: 1. A portion of Crane Creek Golf Course, 2. Riverland Terrace Subdivision and 3. Parcels in southeast Boise. Zoning to be assigned will match Ada County zoning or the Boise City Comprehensive Plan Land Use Map designation. Property owners may obtain a copy of the written annexation plan free of charge by sending an email to ccarroll@cityofboise.org or by phoning 208-384-3830. The Planning Commission will consider written comments that are received via letter or e-mail by September 17th at 5:00 pm.

The hearing will be held on September 21, 2015 AT 6:00
P.M. in the Council Chambers on 3rd floor of City Hall, 150 N.
Capitol Blvd, Boise, Idaho.





Planning & Development Services
 Boise City Hall, 2nd Floor Phone: 208-384-3830
 150 N. Capitol Boulevard Fax: 208-384-2733
 P.O. Box 366 T22711 83727-0366
 Boise, Idaho 83727-0366 Website: www.ci.boise.id.us

LEGAL NOTICE OF PUBLIC HEARING

THE BOISE CITY PLANNING AND ZONING COMMISSION WILL HEAR A REQUEST FOR AN ANNEXATION (CAR15-00026)

Boise City requests an annexation that contains 45 parcels totaling approximately 95 acres including: 1. A portion of Crane Creek Golf Course, 2. Riverland Terrace Subdivision and 3. Parcels in southeast Boise. Zoning to be assigned will match Ada County zoning or the Boise City Comprehensive Plan Land Use Map designation. Property owners may obtain a copy of the written annexation plan free of charge by sending an email to scarr@cityofboise.org or by phoning 208-384-3830. The Planning Commission will consider written comments that are received via letter or e-mail by September 17th at 5:00 pm.

The hearing will be held on **September 21, 2015 AT 6:00 P.M.** in the Council Chambers on 3rd floor of City Hall, 150 N. Capitol Blvd, Boise, Idaho.



N GAP TI UP RE HAL I G N A E S
 BEFORE EXCAVATING CALL 800 LINE



Planning & Development Services

Boise City Hall, 2nd Floor
150 N. Capitol Boulevard
P.O. Box 500
Boise, Idaho 83701-0500

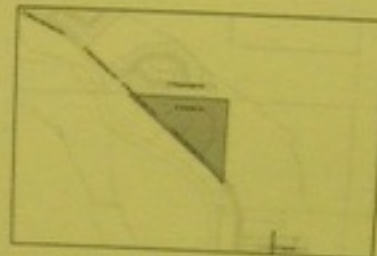
Phone: 208/384-3830
Fax: 208/384-3753
TDD/TTY: 800/377-3529
Website: www.cityofboise.org/pds

LEGAL NOTICE OF PUBLIC HEARING

THE BOISE CITY PLANNING AND ZONING COMMISSION WILL HEAR A REQUEST FOR AN ANNEXATION (CAR15-00026)

Boise City requests an annexation that contains 45 parcels totaling approximately 95 acres including: 1. A portion of Crane Creek Golf Course, 2. Riverland Terrace Subdivision and 3. Parcels in southeast Boise. Zoning to be assigned will match Ada County zoning or the Boise City Comprehensive Plan Land Use Map designation. Property owners may obtain a copy of the written annexation plan free of charge by sending an email to ccarroll@cityofboise.org or by phoning 208-384-3830. The Planning Commission will consider written comments that are received via letter or e-mail by September 17th at 5:00 pm.

The hearing will be held on September 21, 2015 AT 6:00 P.M. in the Council Chambers on 3rd floor of City Hall, 150 N. Capitol Blvd, Boise, Idaho.





Planning & Development Services

Boise City Hall, 2nd Floor
150 N. Capitol Boulevard
P.O. Box 500
Boise, Idaho 83701-0500

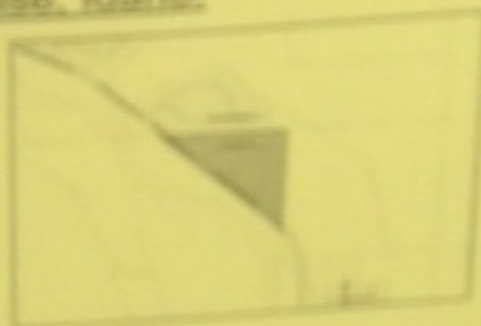
Phone: 208/384-3830
Fax: 208/384-3753
TDD/TTY: 800/377-3529
Website: www.cityofboise.org/pds

LEGAL NOTICE OF PUBLIC HEARING

THE BOISE CITY PLANNING AND ZONING COMMISSION WILL HEAR A REQUEST FOR AN ANNEXATION (CAR15-00026)

Boise City requests an annexation that contains 45 parcels totaling approximately 95 acres including: 1. A portion of Crane Creek Golf Course, 2. Riverland Terrace Subdivision and 3. Parcels in southeast Boise. Zoning to be assigned will match Ada County zoning or the Boise City Comprehensive Plan Land Use Map designation. Property owners may obtain a copy of the written annexation plan free of charge by sending an email to ccarroll@cityofboise.org or by phoning 208-384-3830. The Planning Commission will consider written comments that are received via letter or e-mail by September 17th at 5:00 pm.

The hearing will be held on September 21, 2015 AT 6:00
P.M. in the Council Chambers on 3rd floor of City Hall, 150 N.
Capitol Blvd, Boise, Idaho.





Planning & Development Services

Boise City Hall, 2nd Floor
150 N. Capitol Boulevard
P.O. Box 500
Boise, Idaho 83701-0500

Phone: 208/384-3830
Fax: 208/384-3753
TDD/TTY: 800/377-3529
Website: www.cityofboise.org/pds

LEGAL NOTICE OF PUBLIC HEARING

THE BOISE CITY PLANNING AND ZONING COMMISSION WILL HEAR A REQUEST FOR AN ANNEXATION (CAR15-00026)

Boise City requests an annexation that contains 45 parcels totaling approximately 95 acres including: 1. A portion of Crane Creek Golf Course, 2. Riverland Terrace Subdivision and 3. Parcels in southeast Boise. Zoning to be assigned will match Ada County zoning or the Boise City Comprehensive Plan Land Use Map designation. Property owners may obtain a copy of the written annexation plan free of charge by sending an email to ccarroll@cityofboise.org or by phoning 208-384-3830. The Planning Commission will consider written comments that are received via letter or e-mail by September 17th at 5:00 pm.

The hearing will be held on September 21, 2015 AT 6:00 P.M. in the Council Chambers on 3rd floor of City Hall, 150 N. Capitol Blvd, Boise, Idaho.

