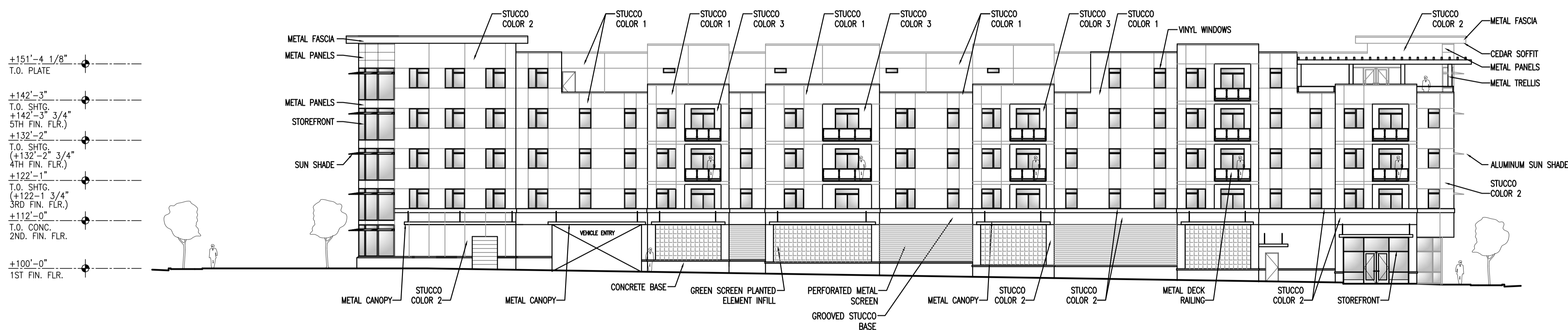
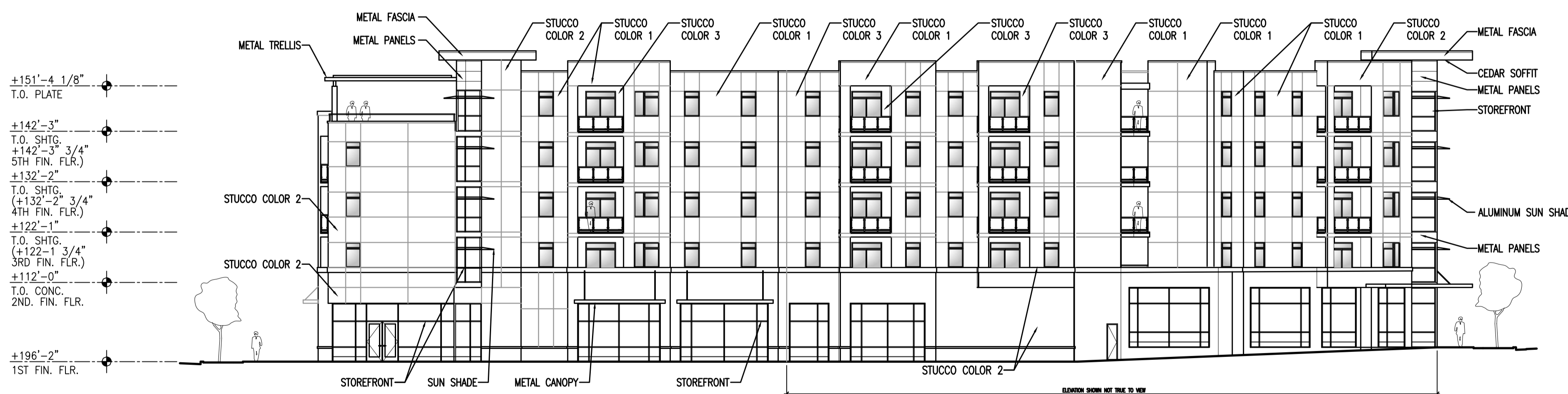


1 SOUTH EXTERIOR ELEVATION (BOISE AVE.)
 SCALE: 1/16" = 1'-0"



2 EAST EXTERIOR ELEVATION (S OAKLAND AVE.)
 SCALE: 1/16" = 1'-0"



3 NORTH EXTERIOR ELEVATION (W. BEACON AVE.)
 SCALE: 1/16" = 1'-0"

EXTERIOR FINISH SCHEDULE

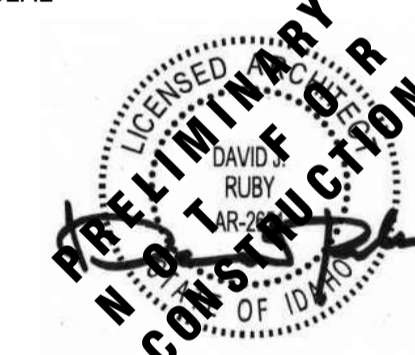
ITEM	MANUFACTURER / COLOR
STUCCO COLOR 1	MANUFACTURER: TBD COLOR: SW 7012 CREAMY
STUCCO COLOR 2	MANUFACTURER: TBD COLOR: SW 2834 BIRDSEYE MAPLE
STUCCO COLOR 3 ACCENT COLOR	MANUFACTURER: TBD COLOR: SW 6694 GLAD YELLOW
PRE-FINISHED METAL FASCIA	MANUFACTURER: TBD COLOR: SILVER
VINYL WINDOW FRAME	MANUFACTURER: ALSIDE, FAIRFIELD 80 COLOR: DESERT CLAY EXT./WHITE INT.
STOREFRONT	MANUFACTURER: TBD COLOR: ANODIZED ALUM.
GLAZING	MANUFACTURER: PPG COLOR: CLEAR INSULATED
PERFORATED METAL SCREEN	MANUFACTURER: TBD COLOR: SILVER
METAL DECK RAILING	POWDER COAT COLOR: SILVER
METAL PANELS	MANUFACTURER: TBD COLOR: SILVER
PRE-FINISHED METAL COPING CAP	FACTORY PRE-FINISHED COLOR: SILVER
EXPOSED METAL FLASHING	FACTORY PRE-FINISHED COLOR: SILVER

PROJECT

IDENTITY

BOISE AVE/BEACON STREET/OAKLAND AVE.
 BOISE, IDAHO

SEAL



This document is the property of THE ARCHITECTS OFFICE, PLLC and is not to be duplicated without written authorization.
 © THE ARCHITECTS OFFICE, PLLC

FILE
 DATE: DECEMBER 12, 2015
 FILE NO: 15-215 A5.0
 DRAWN: DAVID RUBY, AIA

REVISIONS

SHEET

A5.0

EXTERIOR ELEVATIONS