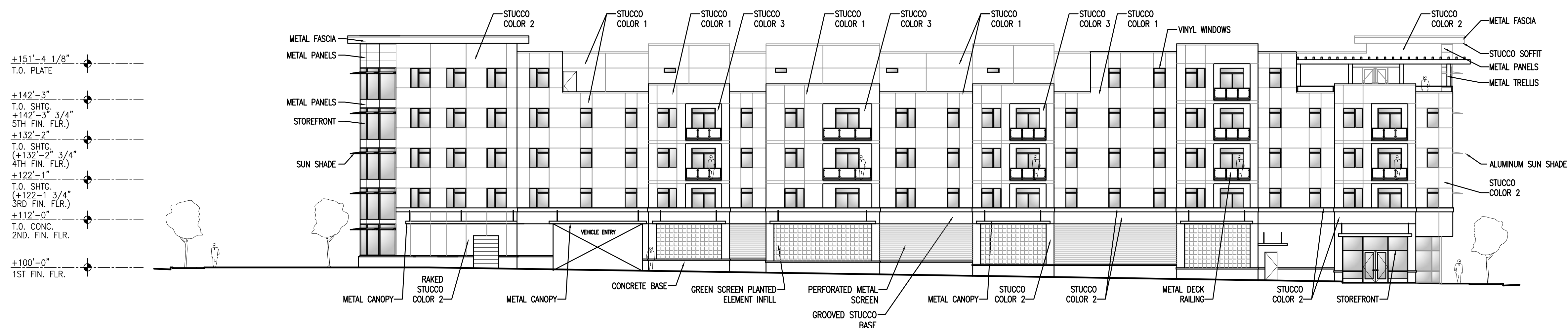


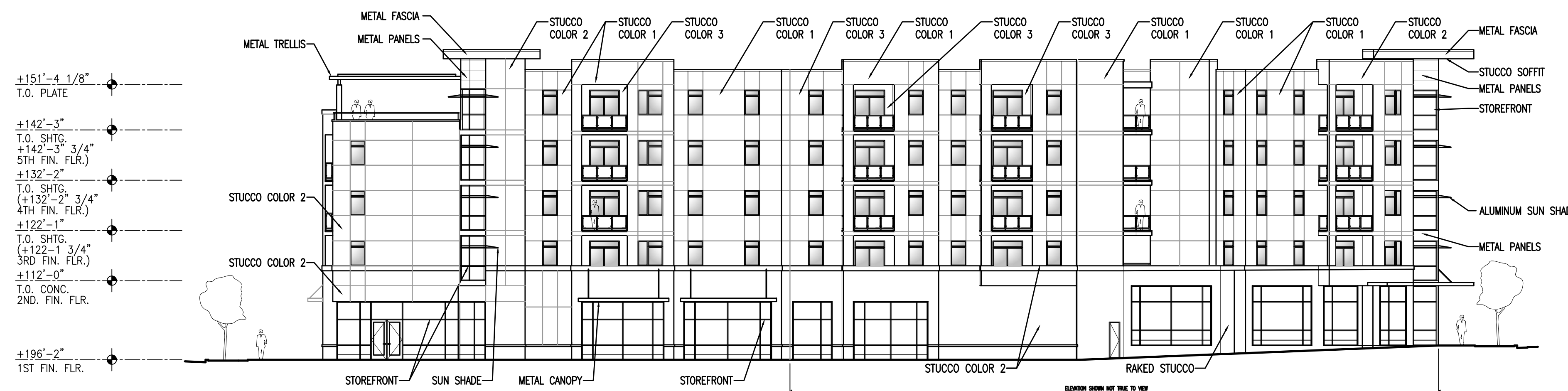
1 SOUTH EXTERIOR ELEVATION (BOISE AVE.)

SCALE: 1/16" = 1'-0"



2 EAST EXTERIOR ELEVATION (S OAKLAND AVE.)

SCALE: 1/16" = 1'-0"



3 NORTH EXTERIOR ELEVATION (W. BEACON AVE.)

SCALE: 1/16" = 1'-0"

EXTERIOR FINISH SCHEDULE

ITEM	MANUFACTURER / COLOR
STUCCO COLOR 1	MANUFACTURER: TBD COLOR: SW 7012 CREAMY
STUCCO COLOR 2	MANUFACTURER: TBD COLOR: SANDSTONE
STUCCO COLOR 3 ACCENT COLOR	MANUFACTURER: TBD COLOR: LIGHT YELLOW
PRE-FINISHED METAL FASCIA	MANUFACTURER: TBD COLOR: SILVER
VINYL WINDOW FRAME	MANUFACTURER: ALSIDE, FAIRFIELD 80 COLOR: DESERT CLAY EXT./WHITE INT.
STOREFRONT	MANUFACTURER: TBD COLOR: ANODIZED ALUM.
GLAZING	MANUFACTURER: PPG COLOR: CLEAR INSULATED
PERFORATED METAL SCREEN	MANUFACTURER: TBD COLOR: SILVER
METAL DECK RAILING	POWDER COAT COLOR: SILVER
METAL PANELS	MANUFACTURER: TBD COLOR: SILVER
PRE-FINISHED METAL COPING CAP	FACTORY PRE-FINISHED COLOR: SILVER
EXPOSED METAL FLASHING	FACTORY PRE-FINISHED COLOR: SILVER

PROJECT

IDENTITY

BOISE AVE/BEACON
STREET/OAKLAND AVE.
BOISE, IDAHO

SEAL



This document is the property of THE ARCHITECTS OFFICE, PLLC and is not to be duplicated without written authorization.
© THE ARCHITECTS OFFICE, PLLC

FILE

DATE
DECEMBER 12, 2015

FILE NO.
15-215 A5.0

DRAWN
DAVID RUBY, AIA

REVISIONS

SHEET

A5.0

EXTERIOR ELEVATIONS