

GENERAL

- 1. ALL WORK SHALL BE DONE IN ACCORDANCE WITH THE SPECIFICATIONS AND REQUIREMENTS OF THE CURRENT EDITIONS OF THE IDAHO STANDARDS FOR PUBLIC WORKS CONSTRUCTION (ISPCW)...

ROADWAY (ADA COUNTY HIGHWAY DISTRICT)

- 1. ALL CONSTRUCTION IN THE PUBLIC RIGHT-OF-WAY SHALL CONFORM TO THE CURRENT EDITION OF THE ISPCW THE ACHD SUPPLEMENTAL SPECIFICATIONS...

STORMDRAIN

- 1. THE PIPE CONTRACTOR SHALL REPLACE ALL PAVEMENT AND CONCRETE REMOVED FOR THE INSTALLATION OF WATER, SEWER, OR IRRIGATION PIPE...

PAVEMENT REPAIR FROM UTILITY WORK

- 1. ACTUAL FIELD CONDITIONS DURING TRENCHING MAY REQUIRE ADDITIONAL PAVEMENT REPAIR BEYOND THE LIMITS SHOWN ON THE PLAN...

PRESSURIZED IRRIGATION PIPE

- 1. FINDER TAPE AND LOCATING WIRE SHALL BE INSTALLED WITH ALL IRRIGATION MAINS, TAPE SHALL BE TWO (2) INCHES WIDE, METALLIC RED IN COLOR...

EAGLE SEWER DISTRICT STANDARD NOTES

- 1. ALL WORK SHALL BE DONE IN ACCORDANCE WITH THE LATEST SEWER SPECIFICATIONS AND STANDARD DRAWINGS OF THE IDAHO STANDARDS FOR PUBLIC WORKS CONSTRUCTION...

File Date: 11/17/2017 1:08 PM Plotted By: Stephen Smith Date Created: 12/13/2016 11:59 AM Project: 10-15-121-LAKEWOOD COMMUNITY PARK/CAJONSHED/10-15-121-C-002.DWG

JUB ENGINEERS, INC. 250 S. Beechwood Ave. Suite 201 Boise, ID 83709-0944



Table with columns: NO., DESCRIPTION, BY, DATE

REUSE OF DRAWINGS AND THE IDEAS AND DESIGN INCORPORATED HEREIN AS AN INSTRUMENT OF PROFESSIONAL SERVICE IS THE PROPERTY OF JUB ENGINEERS, INC. ANY REUSE OF THESE DRAWINGS WITHOUT THE WRITTEN AUTHORIZATION OF JUB ENGINEERS, INC. IS PROHIBITED.

RECEIVED MAR 13 2017 WELMELA BAKER PARK EAGLE, IDAHO

TRAINING & DEVELOPMENT SERVICES FILE: 10-15-121 C-002 JUB PROJ: 10-15-121 DRAWN BY: BAJ DESIGN BY: GRB CHECKED BY: WSW

Plans Are Accepted For Public Street Construction

By stamping and signing the improvement plans, the Registered Engineer ensures the District that the plans conform to all District policies and standards...

By _____ DATE _____ ADA COUNTY HIGHWAY DISTRICT

Know what's below. Call before you dig.

CALL 2 BUSINESS DAYS IN ADVANCE BEFORE YOU DIG, GRADE, OR EXCAVATE FOR THE MARKING OF UNDERGROUND MEMBER UTILITIES

CFH 17 00010



J-U-B ENGINEERS, INC.

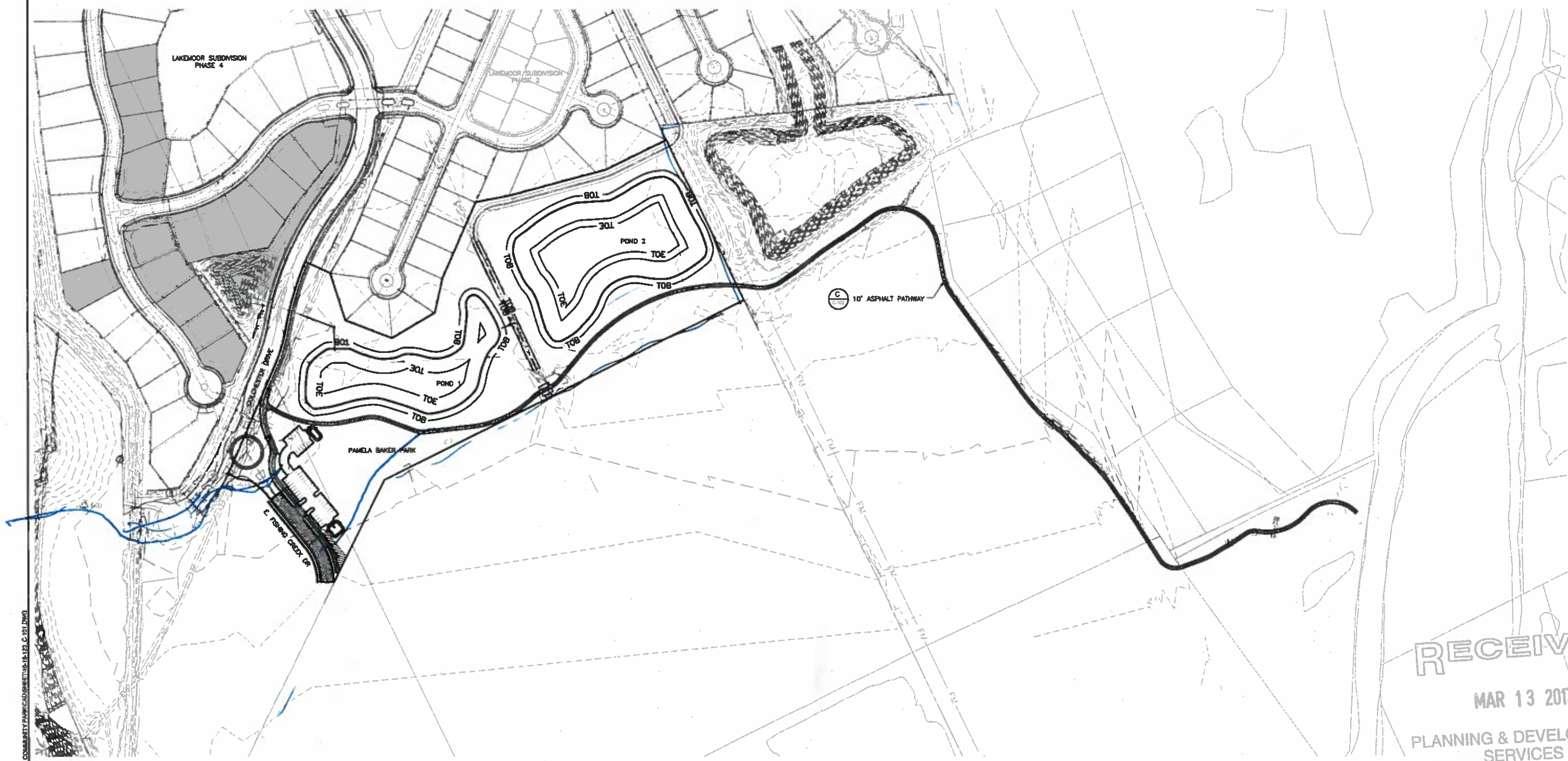
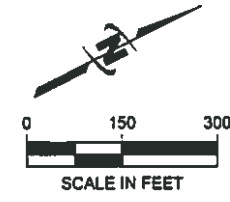
J-U-B ENGINEERS, INC.
250 S. Beechwood Ave.
Boise, ID 83709-0944
Phone: 208.378.7330
Fax: 208.323.9336
www.jub.com



THIS DOCUMENT AND THE DESIGN INFORMATION INCORPORATED HEREIN ARE THE PROPERTY OF J-U-B ENGINEERS, INC. AND IS NOT TO BE USED, IN WHOLE OR PART, FOR ANY OTHER PROJECT WITHOUT THE EXPRESS WRITTEN AUTHORIZATION OF J-U-B ENGINEERS, INC.

PAMELA BAKER PARK
FRUITE, IDAHO

OVERALL SITE PLAN



RECEIVED

MAR 13 2017

PLANNING & DEVELOPMENT SERVICES



Know what's below.
Call before you dig.

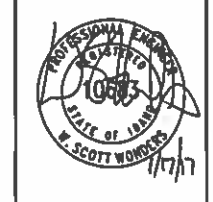
CALL 2 BUSINESS DAYS IN ADVANCE BEFORE YOU DIG, GRADE, OR EXCAVATE FOR THE MARKING OF UNDERGROUND MEMBER UTILITIES

CFH 17-00010

FILE: 10-16-120-C-01
JOB PROJ #: 10-16-120
DRAWN BY: SAS
DESIGN BY: ORB
CHECKED BY: WSW
AT FULL SIZE, IF NOT ONE INCH SCALE ACCORDINGLY
LAST UPDATED: 1/8/2017
SHEET NUMBER:

C-101

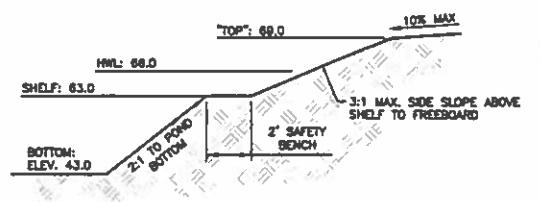
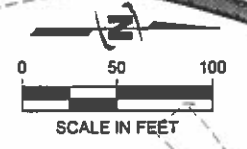
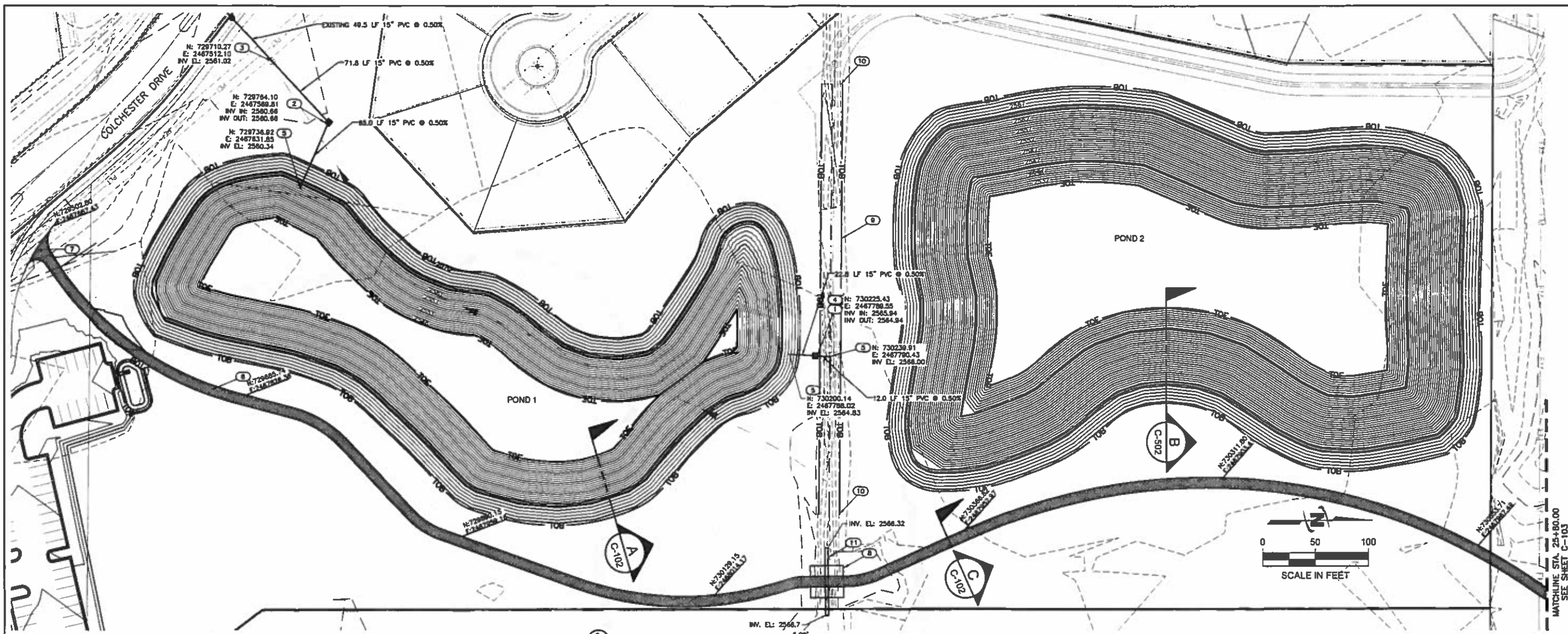
Plot Date: 1/17/2017 1:08 PM Plotted By: Stephen Beraha
Data Created: 12/12/2016 8:49:03 AM Project: 10-16-120-LAKEMOOR COMMUNITY PARK-ADJUSTED-10-16-120-C-101.DWG



NO.	DESCRIPTION	BY	DATE

THIS DOCUMENT AND THE DRAWINGS INCORPORATED HEREIN AS AN INSTRUMENT OF PROFESSIONAL SERVICE IS THE PROPERTY OF J-U-B ENGINEERS, INC. AND IS NOT TO BE USED, IN WHOLE OR IN PART, FOR ANY OTHER PROJECT WITHOUT THE EXPRESS WRITTEN AUTHORIZATION OF J-U-B ENGINEERS, INC.

RECEIVED
 MAR 13 2017
 PLANNING & DEVELOPMENT SERVICES
 Know what's below. Call before you dig.
 CALL 2 BUSINESS DAYS IN ADVANCE BEFORE YOU DIG, GRADE, OR EXCAVATE FOR THE MARKING OF UNDERGROUND MEMBER UTILITIES
 SHEET NUMBER: C-102



A POND 1 SECTION
SCALE: N.T.S.



B POND 2 SECTION
SCALE: N.T.S.



C ASPHALT PATHWAY DETAIL
SCALE: N.T.S.



1 GRAVITY IRRIGATION WEIR BOX
SCALE: N.T.S.



2 HINGED BOX COVER
SCALE: N.T.S.



CIPOLETTI WEIR



3 GRAVITY IRRIGATION WEIR BOX
SCALE: N.T.S.

KEY NOTES

- 1 GRAVITY IRRIGATION WEIR BOX (1)
- 2 GRAVITY IRRIGATION BOX (2)
- 3 CONNECT TO EXISTING 15\"/>
- 4 15\"/>
- 5 15\"/>
- 6 10\"/>
- 7 MATCH EXISTING CONCRETE SIDEWALK
- 8 PEDESTRIAN BRIDGE OVER EXISTING IRRIGATION DITCH, BY OTHERS.
- 9 RECONSTRUCT IRRIGATION DITCH. GRADE TO DRAIN.
- 10 MATCH EXISTING IRRIGATION DITCH FLOWLINE AND EMBANKMENT
- 11 63.5LF 36\"/>

Plot Date: 1/17/2017 1:10 PM Plotted By: Stephen Berman
 Date Created: 1/15/2018 1:10 PM Project: 18-1231-ANEMOOR COMMUNITY PARK/CAD SHEET: 18-123 C-102.DWG

CFH 17-00010



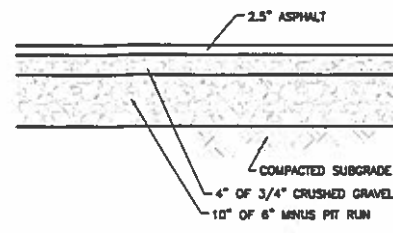
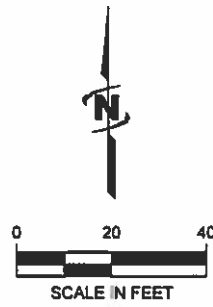
REVISION

NO.	DESCRIPTION	BY	DATE

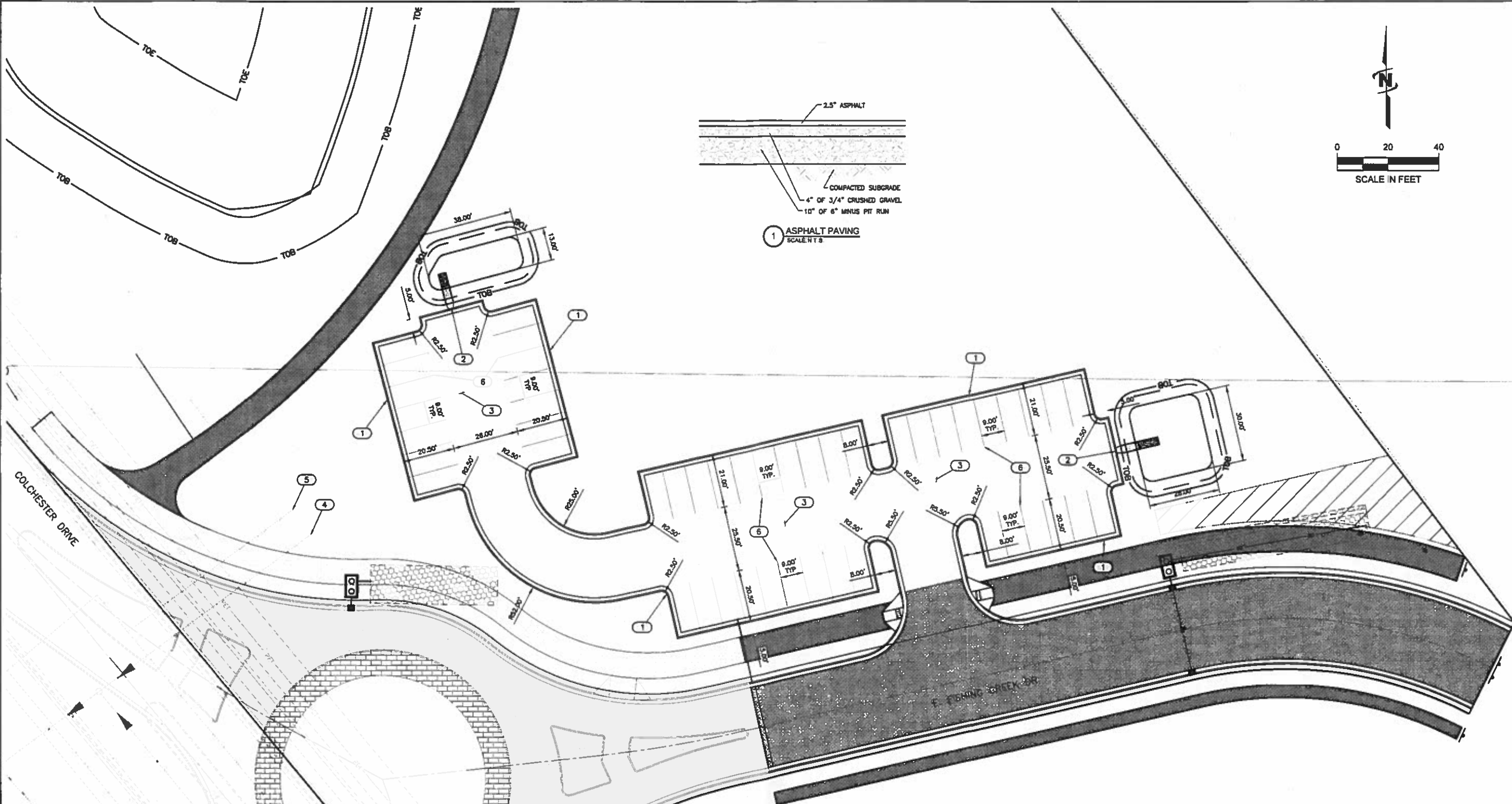
IN THE EVENT OF DISAPPROPRIATE USE OF THIS DOCUMENT OR THE REVISIONS INCORPORATED HEREIN, THE USER SHALL BE RESPONSIBLE FOR ANY DAMAGE TO PROPERTY OR PERSONS. JUB ENGINEERS, INC. AND ITS EMPLOYEES SHALL NOT BE HELD LIABLE FOR ANY OTHER PROJECT WITHOUT THE EXPRESS WRITTEN AUTHORIZATION OF JUB ENGINEERS, INC.

PAMELA BAKER PARK
 EAGLE, IDAHO

PARKING LOT SITE PLAN



1 ASPHALT PAVING
 SCALE 1/8"



KEY NOTES

- 1 6" VERTICAL CURB AND GUTTER PER ISPWC SD-701
- 2 CURB DRAIN PER ISPWC SD-715
- 3 ASPHALT PAVING (1/8")
- 4 EXISTING 8" SEWER STUB
- 5 EXISTING 8" WATER STUB
- 6 4" WIDE PARKING STALL STRIPING

RECEIVED

MAR 13 2017



Know what's below.
 Call before you dig.

CALL 2 BUSINESS DAYS IN ADVANCE BEFORE YOU DIG, GRADE, OR EXCAVATE FOR THE MARKING OF UNDERGROUND MEMBER UTILITIES

PLANNING & DEVELOPMENT SERVICES

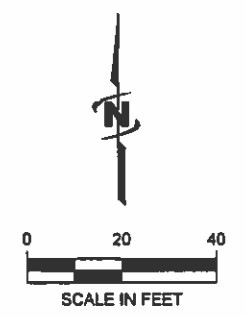
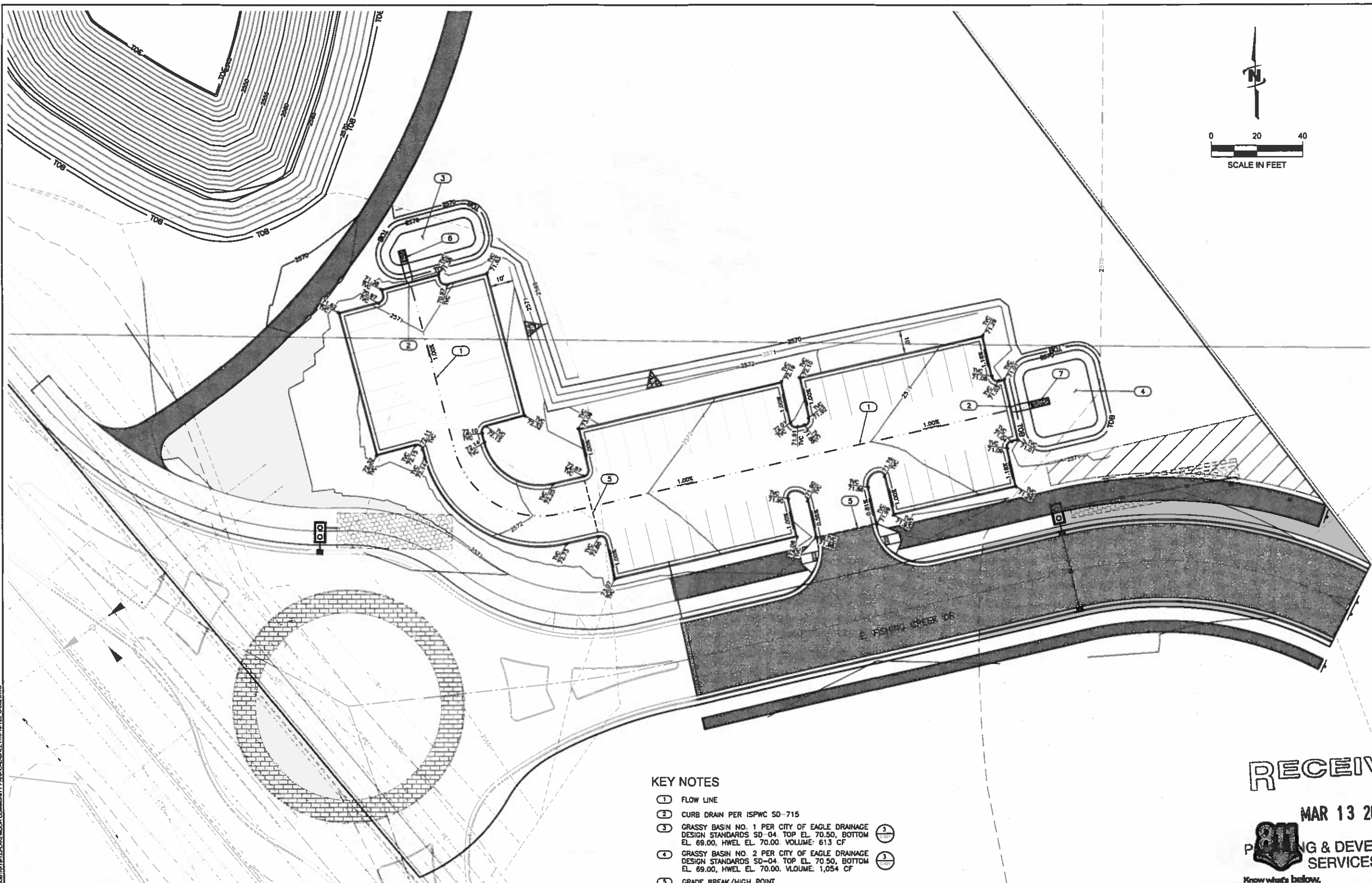
PROJECT: 17-00010
 DRAWN BY: GAB
 DESIGN BY: GFB
 CHECKED BY: WSW
 AT FULL SIZE, IF NOT ONE INCH SCALE ACCORDINGLY
 LAST UPDATED: 1/16/2017

SHEET NUMBER:
C-201

CFH 17-00010

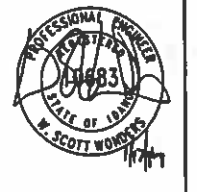
Plot Date: 1/17/2017 1:13 PM Plotted By: Stephen Bernhe
 Date Created: 8/13/2016 10:48:10 AM Project: 17-00010-16-125-LAKEMOOR COMMUNITY PARKING SHEET 10-15-173 C-201 DWG

Plot Date: 1/17/2017 1:14 PM Plotted By: Stephen Baraka
 Date Created: 12/15/2016 10:45:00 AM Project: COMMUNITY PARK/CONSTRUCTION SHEET NO. 123 C-202 DWG



- KEY NOTES**
- ① FLOW LINE
 - ② CURB DRAIN PER ISPCW SD-715
 - ③ GRASSY BASIN NO. 1 PER CITY OF EAGLE DRAINAGE DESIGN STANDARDS SD-04. TOP EL. 70.50, BOTTOM EL. 69.00, HWEL EL. 70.00. VOLUME: 613 CF
 - ④ GRASSY BASIN NO. 2 PER CITY OF EAGLE DRAINAGE DESIGN STANDARDS SD-04. TOP EL. 70.50, BOTTOM EL. 69.00, HWEL EL. 70.00. VOLUME: 1,054 CF
 - ⑤ GRADE BREAK/HIGH POINT
 - ⑥ ABSORPTION BED NO. 1 PER CITY OF EAGLE SD-04. 5' LENGTH, 3' WIDTH, 2' DEPTH
 - ⑦ ABSORPTION BED NO. 2 PER CITY OF EAGLE SD-04. 8' LENGTH, 3' WIDTH, 2' DEPTH

JUB
 J-U-B ENGINEERS, INC.
 J-U-B ENGINEERS, INC.
 250 S. Beechwood Ave.
 Suite 201
 Boise, ID 83709-0944
 Phone: 208.378.7330
 Fax: 208.323.9336
 www.jub.com



THIS DOCUMENT AND THE DESIGN INCORPORATED HEREIN AS AN INSTRUMENT OF PROFESSIONAL SERVICE, IS THE PROPERTY OF JUB ENGINEERS, INC. AND IS NOT TO BE USED IN WHOLE OR IN PART FOR ANY PROJECT WITHOUT THE EXPRESS WRITTEN APPROVAL OF JUB ENGINEERS, INC.

NO.	REVISION	BY	DATE

PAMELA BAKER PARK
 EAGLE, IDAHO
 PARKING LOT GRADING AND DRAINAGE PLAN

RECEIVED

MAR 13 2017

PLANNING & DEVELOPMENT SERVICES
 Know what's below.
 Call before you dig.

CALL 2 BUSINESS DAYS IN ADVANCE BEFORE YOU DIG, GRADE, OR EXCAVATE FOR THE MARKING OF UNDERGROUND MEMBER UTILITIES

CFH 17-00070

FILE: 10-18-123 C-202
JUB PROJ #: 10-18-123
DRAWN BY: SAG
DESIGN BY: GFB
CHECKED BY: WSW
ONE INCH
AT FULL SIZE, IF NOT ONE INCH, SCALE ACCORDINGLY
LAST UPDATED: 1/18/2017
SHEET NUMBER:
C-202



NO.	DESCRIPTION	BY	DATE

PAMELA BAKER PARK
EAGLE, IDAHO
DETAIL SHEET

RECEIVED

MAR 13 2017

PLANNING & DEVELOPMENT SERVICES

Know what's below.
Call before you dig.

CALL 2 BUSINESS DAYS IN ADVANCE BEFORE YOU DIG, GRADE, OR EXCAVATE FOR THE MARKING OF UNDERGROUND MEMBER UTILITIES

SD-109-123 C-501
JUB PROJ # 10-18-123
DRAWN BY: GAB
DESIGN BY: GRS
CHECKED BY: WSW
DATE: 01-18-17
AT FULL SIZE, IF NOT ONE INCH SCALE ACCORDINGLY
LAST UPDATED: 1/17/2017
SHEET NUMBER: C-501

LEGEND

- 1 WELL COVER, 8" DIA. WATERTIGHT GALVANIZED STEEL BOLT DOWN COVER AND DAMSTER
- 2 OR 3 BOLT LID WITH 9/16" HEAD AND SAE THREADS, GASKETED
- 3 CONCRETE (COLLAR), CLASS 3000 (SPWC SECTION 703)
- 4 3/8" DIA HOLES OR SLOTS CUT INTO PIPE AT 3" ON CENTER
- 5 TRACER WIRE SHALL BE PLACED ON OUTSIDE OF PVC PIPE, MINIMUM 18 GAUGE, INSULATED, SINGLE-CONDUCTOR COPPER WIRE, INSULATION COLOR SHALL BE GREEN WITH THREE 8" DIAMETER COILS
- 6 PIPE SHALL BE PERFORMED PVC, ASTM D-3035, SDR 35. WELLS BACKFILLED IN A FIT REQUIRE 6" PIPE. DRILLED WELLS MAY USE 4" PIPE
- 7 NONWOVEN FILTER FABRIC AROUND OPENINGS AND BOTTOM, FABRIC OVER CHIPS/DRAIN ROCK
- 8 POLYPROPYLENE FIBER REINFORCEMENT AT 1 1/2 LBS/CY
- 9 BACKFILL MATERIAL TO MATCH STORAGE MEDIA FOR OBSERVATION WELLS LOCATED WITHIN A BMP FACILITY. USE PIPE BEDDING CHIPS FOR OBSERVATION WELLS LOCATED OUTSIDE BMP FACILITIES

NOTES:

1. GROUNDWATER OBSERVATION WELLS ARE FOR MEASUREMENT OF GROUNDWATER LEVELS WITHIN OR NEAR STORM DRAINAGE FACILITIES
2. THIS DETAIL IS FOR WELLS INSTALLED BY DRILLING OR BY EXCAVATED PITS
3. LOCATION OF GROUNDWATER OBSERVATION WELLS SHALL BE APPROVED BY ACHD
4. OBSERVATION WELLS NOT ALLOWED IN CURB OR VALLEY GUTTER SECTION

2015 ACHD REVISION

IDAHO STANDARDS FOR PUBLIC WORKS CONSTRUCTION (ACHD SUPPLEMENT)	GROUNDWATER OBSERVATION WELL	STANDARD DRAWING SD-627
		1 OF 2

SECTION N.T.S.

PLAN CONCRETE COLLAR N.T.S.

SECTION CONCRETE COLLAR N.T.S.

2015 ACHD REVISION

IDAHO STANDARDS FOR PUBLIC WORKS CONSTRUCTION (ACHD SUPPLEMENT)	GROUNDWATER OBSERVATION WELL	STANDARD DRAWING SD-627
		1 OF 2

SEEPAGE BED NOTES:

1. ACHD REQUIRES ELECTRONIC MARKERS AT ALL CORNERS OF UNDERGROUND INFILTRATION SYSTEMS. CONTRACTOR TO COORDINATE WITH ACHD INSPECTION FOR PLACEMENT OF MARKERS DURING CONSTRUCTION AND PRIOR TO BACKFILLING.
2. SEEPAGE BED EXCAVATION MUST EXTEND A MINIMUM OF 2 FEET INTO FREE DRAINING MATERIAL.
3. CONTRACTOR SHALL NOTIFY THE ENGINEER IMMEDIATELY IF GROUNDWATER IS ENCOUNTERED WITHIN 3 FEET OF THE BOTTOM DESIGN ELEVATION FOR ANY INFILTRATION FACILITY AND/OR IF IT IS HIGHER THAN ANTICIPATED.
4. CONTRACTOR SHALL PERFORM PERCOLATION TESTING AT PROPOSED SEEPAGE BED LOCATIONS PRIOR TO START OF CONSTRUCTION. NOTIFY ACHD INSPECTOR 48 HOURS PRIOR TO TESTING.
5. DESIGN INFILTRATION RATE IS 8 IN/HR PER THE SITE GEOTECHNICAL EVALUATION PREPARED BY SITE CONSULTING LLC, DATED JUNE 12, 2016.

4 TYPICAL SEEPAGE BED SECTION
SCALE: N.T.S.

3/8" PERFORATIONS IN VALLEYS OF CORRUGATED PIPE, 5 DA.

5 PIPE PERFORATION SCHEDULE
SCALE: N.T.S.

Plans Are Accepted For Public Street Construction

By stamping and signing the improvement plans, the Registered Engineer ensures the District that the plans conform to all District policies and standards. Variances or waivers must be specifically and previously approved by the District in writing. Acceptance of the improvement plans by the District does not relieve the Registered Engineer of these responsibilities.

BY _____ DATE _____
ADA COUNTY HIGHWAY DISTRICT

CFH 17-00070

6 CULVERT DETAIL
SCALE: N.T.S.

SECTION A-A N.T.S.

PLAN VIEW N.T.S.

NOTES:

1. SAND AND GREASE TRAP USED FOR SUBSURFACE FACILITIES ONLY

LEGEND:

- 1 MANHOLE FRAME AND COVER PER SD-817 (TYPICAL)
- 2 LOCATION AND FL ELEV. PER DESIGN PLANS (TYPICAL)
- 3 H 1-FT USE GRADE RINGS (TYPICAL)
- 4 1-FT < H <= 2-FT USE 3/4" DIA. RCP RISER
- 5 2-FT < H <= 10-FT USE MANHOLE CONE & 48" DIA. RISERS
- 6 EL. A > EL. B BY 0.10' MIN
- 7 EL. D < EL. B BY 0.10' MIN
- 8 EL. C < EL. B BY 0.50' MIN, UNLESS OTHERWISE APPROVED BY ACHD
- 9 WATERTIGHT SEAL
- 10 PRECAST BOX MANUFACTURER SHALL MARK FLOW DIRECTION AND LABEL INLET OR OUTLET ON SIDE OF BOX

2015 ACHD STORMWATER DESIGN GUIDELINES

2015 ACHD STORMWATER DESIGN GUIDELINES	SAND AND GREASE TRAP	STANDARD DRAWING BMP 01
		1 OF 2

2" DRAIN ROCK OR COBBLES

3" MIN

ABSORPTION BED

3

NOTES:

- 1 FREEBOARD: D<3: FREEBOARD = 8" MIN
D>3: FREEBOARD = 12" MIN
- 2 MINIMUM 3' SEPARATION FROM SEASONAL HIGH GROUND WATER LEVEL.
- 3 SLOPE IS 1% TOWARDS ABSORPTION BED.
- 4 ABSORPTION BED MUST BE SIZED AT 1% VOLUME OF DESIGN STORM.
- 5 SIDE SLOPES SHALL NOT BE STEEPER THAN 4:1 (H:V).

CITY OF EAGLE DRAINAGE DESIGN STANDARDS

CITY OF EAGLE DRAINAGE DESIGN STANDARDS	GRASSY BASIN	STANDARD DRAWING NO. SD-04
---	--------------	----------------------------

Plot Date: 1/17/2017 1:18 PM Plotted By: Stephen Barrows
 Date Created: 12/13/2016 11:59 AM Project: 16-123-LAKEWOOD COMMUNITY PARK-CADSW-SHEET10-18-123 C-501.DWG